

## BRIEFS

WORLDWIDE ARCHITECTS  
GROUPS TO MEET

ST. ANDREWS, Scotland — The British Institute of Golf Course Architects will mark the new century by returning to the Home of Golf for its International Conference, Sept. 27-29. A three-day program is planned at The Old Course Hotel here and the event will bring together the world's golf course architects in a global congress of golf course design. It is anticipated that not only will the Institute, shortly to include the Continental European groups in a newly merged organization to be known as the European Institute, but also members of the Society of Australian Golf Course Architects, and the American and the Japanese societies of golf course architects will take part. It is hoped that many other architects from around the world, together with representatives of the golf industry and allied fields, will join the unique celebration of the profession in St. Andrews. The conference is being supported by the Toro Co. and Barenbrug Co.

## RAMSY JOINS GOLFPAN

Golfsplan, Fream and Dale, recently hired Kevin Ramsy as senior golf course architect. Ramsy was previously a senior designer with J. Michael Poellot Golf Design Group and Director of Golf Design with Walter Raleigh Stewart. Currently Ramsy is working on the Serapong Golf Course at Sentosa Golf Club in Singapore, Barbarosa Golf Club in Texas and Yong Pyong Golf Club in Korea. He brings 11 years of golf course design experience to Golfsplan.

## BOULDER POINTE GC OPENS

OXFORD, Mich. — The Boulder Pointe Golf Club & Conference Center, a 27-hole layout designed by Conroy-Dewling Associates, Inc., opened here June 1. The three nines — The Dunes, The Peaks and The Bluffs — weave in, around and through a former gravel and sand mining quarry. "There are places along the Peaks course that you would swear are in a desert in the American Southwest," said developer Jim Dewling. Each hole features five sets of tees to accommodate all skill levels. The high-end, total service facility provides a players' bar and grill, a club cleaning service, and a PGA professional staffed golf shop. All carts feature the Proshot Global Positioning System.

GOLF COURSE NEWS

Architect Bill Love takes  
environmental honorsQA  
&A

The Turf and Ornamental Communicators Association (TOCA) has named Bill Love the winner of its Environmental Communicator of the Year Award. The presentation took place at TOCA's annual meeting, held recently in Boston.

TOCA is an association of editors, writers, public relations practitioners and others involved in green industry communications. The group honored Love for his work as primary writer and editor of a publication dealing with environmental sensitivity in golf course design and development.



Bill Love

The four-color book — "An Environmental Approach to Golf Course Development" — consists mainly of illustrated case studies of courses built with special challenges in such issues as shoreline protection, historical preservation, wildlife habitat, and water quality. It was published last year by the American Society of Golf Course Architects. Love's first version, with the same title, appeared in 1992.

President of W.R. Love Golf Course Architecture, in College Park, Md., Love has designed about 25 courses. Since 1990, he has chaired the Environmental Committee of the ASGCA. Editor Jay Finegan caught up with him at the TOCA meeting.

**Golf Course News:** What's the significance of your book in light of today's regulatory atmosphere?

AN ENVIRONMENTAL APPROACH TO  
GOLF COURSE DEVELOPMENT

The cover from Love's book, which helped him win the TOCA award.

**Love:** All golf course architects have to be attuned to environmental issues, because they crop up on every single project that we do now. To design a course in ignorance of environmental concerns is just shooting yourself in the foot. If the regulatory review process doesn't catch up with you, then the inefficiency of the golf course will. If you're building in conditioning problems or operational problems, then the superintendent has to

Continued on page 22

## Garl's Wooden Sticks set for opening face-off in Canada

By PETER BLAIS

UXBRIDGE, Ontario, Canada — A handful of National Hockey League players is among the owners of an upscale daily-fee course that held its grand opening May 1 roughly 45 minutes northeast of Toronto.

Wooden Sticks Golf Club — named after the hockey equipment — is a Ron Garl design.

Twelve of the 18 holes, Garl said, have been "inspired" by some of the world's best-known layouts, including St. Andrews, Pine Valley and Augusta National.

"It is a true member-for-a-day course," Garl said of the facility. "It costs \$175 to play, but that includes your golf, cart, range balls, food and drink — everything but alcohol."

Among the National Hockey Leaguers involved in the course are Gary Roberts of the Carolina Hurricanes, Joe Nieuwendyk of the Dallas Stars, and former Hurricane Steve Rice. Other investors, Garl said, include local Toro and E-Z-GO distributor Turf Care Canada. Greg Seeman and Alan Chud are the managing partners.

Construction began in January 1998. The course held a soft opening last summer with about 2,000 rounds played before winter. "We spent a long time looking for the right site," Garl said. "We caught a good winter and had good soils

Continued on page 23



The 17th hole at Wooden Sticks.

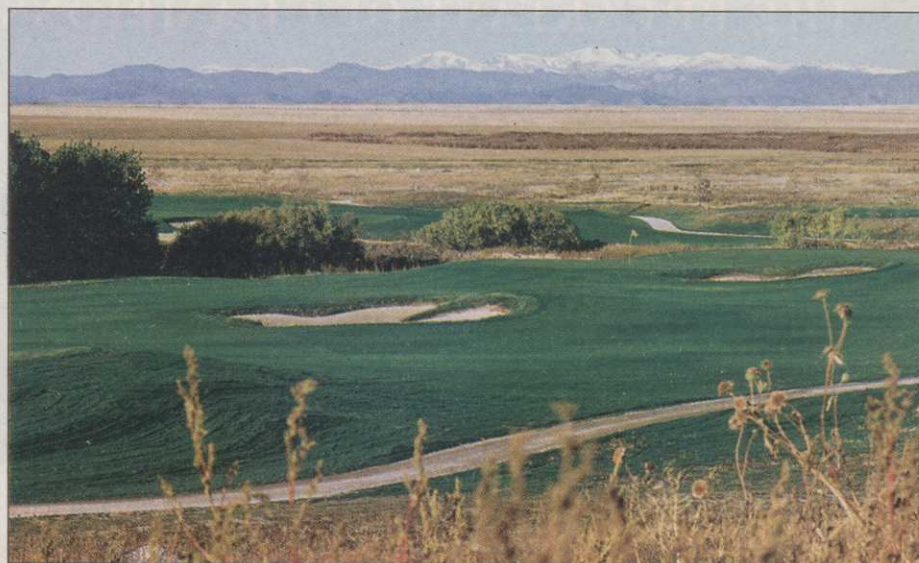
New Colorado layout  
aims for rustic flavor

By DENNIS LYON

AURORA, Colo. — Murphy Creek, the city of Aurora's latest addition, will open this July. The 7,457-yard course, with multiple tees, was designed by Ken Kavanaugh of Tucson, Ariz.

Kavanaugh and the project team's goal was to provide a golf experience that surrounds the player with great golf and nostalgia. The clubhouse complex creates the feel of the old family farm from the 1920s. The steel-wheeled antique farm implements scattered throughout the course, for instance, remind the golfer of the hard times the eastern plains experi-

Continued on page 21



Murphy Creek, a new Ken Kavanaugh design near Denver.



## Building ongoing throughout Asia

Work is underway on numerous fronts throughout the Asia Pacific region. Among the projects are:

### CAMBODIA

• **KAMPONG CHNANG** — Initial planning is underway for the first 18 holes of a 36-hole Ross C. Watson-designed course to be developed as a part of a new 50,000-acre city development.

### CHINA

• **SHANGHAI** — Nine holes of the Thomson, Wolveridge and Perrett-designed Bin Hai Golf Club are open for play. The final nine holes are being grassed with Legend Bermudagrass from Australia on the tees, fairways and rough, Penn A1 on the greens and sheeps fescue on the mounds. Course Superintendent Gary Chatfield expects the course to open in early July.

### MALAYSIA

• **PENANG** — Initial construction work has been completed on four Ross C. Watson-redesigned holes at Penang Turf Club. The new layout, which had to be altered to allow for an expanded horse stable, will open in July.

### PHILIPPINES

• **LAKETAAL** — The Splendido

Golf Club, developed by Manila-based JAKA Group, has gotten the go-ahead from Greg Norman's design team to finish the remaining work on the course. The back nine is already open for play and bunker work and grassing is now progressing on the front nine.

### VIETNAM

• **DANANG** — Hong Kong-based developer Lai Sun has signed a contract to develop 30

hectares of land adjacent to the Furama Resort Danang. In addition to constructing a golf course and other leisure facilities on the property, Lai Sun will add another 200 hotel rooms. Work on the recreational facilities and beachfront restaurant is already underway.

• **HO CHI MINH CITY** — Two sports complex facilities that include golf course components have received approval from lo-

cal and national agencies.

The Ministry of Planning and Investment has granted a license to Sing Viet Co. Ltd. to construct a U.S.\$120 million sports, tourist, commercial and residential complex in Lang Le, Binh Chahn District. Saigon Tourist and HCMC Parks and Greenery Co. have been given the go-ahead to build a sports complex in Gai Dinh Park near Tan Son Nhat Airport.

## Murphy Creek

Continued from page 17

enced during the dust bowl era. The cart storage building will remind a Midwestern baby-boomer of his grandfather's old dairy barn. And the silo next to the driving range tee provides a unique place to pick-up range balls.

The golfer's plaza, between the clubhouse and the cart barn, is the site of a special public art project that proposes to create a gathering of golf's historic icons. The first pieces include life-size sculptures of the female athlete of the century, Mildred (Babe) Dedrickson Zaharies, in full back swing, and legendary greenkeeper Old Tom Morris waiting his turn to tee off. These pieces, over time, will be joined by life-size sculptures of Ben Hogan, amateur golfer Bobby Jones, a typical caddy from the 1920s, and course architect Donald Ross. This assemblage will be known as A Quintessential Gathering.

Out on the course, the golfer is greeted on each hole with large landing areas, sand bunkers that require strategic play, and generous greens. The golfer will also experience water, wildlife and wind. Murphy Creek, the actual stream, meanders through the terrain. It borders six holes, with its 75-year-old cottonwoods adding visual appeal.

"There's no redundancy at Murphy Creek Golf Course," says Ken Kavanaugh. "Each hole possesses a unique challenge, character and charisma." ▴

...

*Dennis Lyon is Manager of Golf for the City of Aurora and a past president of the Golf Course Superintendents Association of America.*

## Your reputation never looked better.



**TURF ROYALE®**  
21-7-14(S)

### Professional Turf and Landscape Fertilizer

When your grounds look good, you look good, thanks to Turf Royale®, the championship quality turf and landscape fertilizer that combines nitrate and ammonium nitrogen, highly soluble phosphate, and chloride free potash in every prill. N, P, K and S the right way!

#### Split Nitrogen.

#### Fast Response.

#### Sustained Feeding.

Turf Royale supplies nitrate nitrogen for quick green-up (even in cool weather) and ammonium nitrogen for longer term feeding.

**7% Phosphate** in an efficient, highly soluble form for vigorous new growth.

**Chloride Free Potash** derived entirely from potassium sulfate. No chlorides — less salts. Improved resistance to turf diseases and stress.

#### High Analysis; Application Efficiency.

Turf Royale's 42% plant food content stretches coverage capability. Fewer trips. Less product to store and handle. One 50 lb. bag feeds over 10,000 sq. ft. of established turf.

**Homogeneous Prills** — no segregation of nutrients. Each prill contains the 3-1-2 ratio of nutrients. Your turf receives precise, uniform feeding — no "hot spots."

Put Viking Ship® Turf Royale, the professional turf and landscape fertilizer for all seasons, to work for you. Call us or your local fertilizer dealer for more information.

**Customer Service 1-800-234-9376**

**VIKING SHIP®**



Hydro Agri  
North America

*Hydro works harder for you.*

®Registered trademark of Norsk Hydro ASA