

# Golf Course Classifieds

To reserve space in this section, call Jean Andrews 207-925-1099.

## HELP WANTED

### ASSISTANT PROJECT MANAGER

Williamsburg Environmental Group, Inc. provides specialized golf course consulting services in the areas of ecology, environmental planning, regulatory support, landscape architecture and civil engineering. We currently have openings in our Williamsburg and suburban Washington D.C. offices for landscape architects, civil engineers, and environmental planners with experience in golf related projects. Requirements include 2-5 years of design experience using AutoCAD R14, experience with conceptual design through final site plan development, and coordination with clients and golf course architects. Must have excellent written and verbal communication skills. E-mail resume to Jennifer West at jwest@wegnet.com or fax to 757-229-4507.

### CONSTRUCTION PERSONNEL

Northeast based golf course construction company seeking qualified shapers, supervisors, finishers, and utility operators. Must be willing to travel. Call (914) 565-7509, or Fax Resume to (914) 565-7501.

### CAREER OPPORTUNITIES

Seeking experienced golf course construction Foreman and shapers. Must have three years plus experience in renovation work. Career opportunities with benefit packages for qualified individuals. Send resume and references to: Aspen Corp., P.O. Box 737, Daniels, WV 25832 or fax to 304-763-4591.

### NEW PROJECTS STARTING SOON

We recruit golf course construction personnel for AAA clients. Opportunities throughout the US for all levels of qualified individuals.

### LET US GO TO WORK FOR YOU!

Contact Trey McQueen at PR1. 1-888-774-8367  
Member GCBA

### CONSTRUCTION SUPERINTENDENT

Horizon Golf, a golf course water feature construction company founded in 1993, is seeking an experienced Superintendent to oversee field operations. A hands-on person with good customer skills and previous staff supervision/equipment operation experience is desired.

Horizon has developed a national presence in the golf industry, so frequent travel is required. HUSBAND AND WIFE TEAMS ARE WELCOME. Please submit qualifications, including salary requirements, to:

#### Horizon Golf

Attn: DG

528 Main Street

P.O. Box 4499

Evansville, IN 47724

## HELP WANTED

### GOLF COURSE CONSTRUCTION

Wanted, creative individuals to train and fill positions as site supervisors, shapers, Irrigation foremen/technicians, drainage & finishing personnel for a progressive and energetic construction company. Fax resume to: Intergolf Construction Fax: 914-693-9506; Tel: 914-693-2024

AVAILABLE JAN 1 - MARCH 1, 2000 Site Supervisor with 3 man crew and over 10 years experience. Willing to travel. For more information and references call 905-770-3153



GOLF CONSTRUCTION OF AMERICA  
GOLF COURSE CONSTRUCTION PERSONNEL

Experienced superintendents, shapers and golf course construction personnel needed. Must be willing to travel. References required. Fax resumes & references to: Golf Construction of America (417) 334-4563 or Phone: 417-337-8291.

### HELP WANTED

JOB SUPERINTENDENTS

FOR GOLF COURSE

CONSTRUCTION COMPANY

FAX RESUMES TO 912-382-9876

### United Shapers Association USA

United Shapers Association is the golf course development industry's first organization in the world of it's kind. USA benefits those in the golf industry by providing contact information and advertisement opportunities to those whom are in search of services, products, employment and even people. For more information you may contact us at:

[www.Forshapers.com](http://www.Forshapers.com)

or

(561) 776-7238

### SHAPERS AND FINISHERS

Quality and experienced individuals needed. Minimum of 3 years experience. Excellent potential to grow with aggressive company.

Fax resume with references to:

EAGLE GOLF CONSTRUCTION, INC.

(810) 632-6270

## HELP WANTED

### PROJECT MANAGER / ESTIMATOR

SEMA Golf LLC is currently seeking Project Manager/Estimator. Qualified candidates must possess thorough knowledge of Excel, Microsoft Word and Microsoft Projects software. Must be willing to relocate to Scottsdale, Arizona. Mail or fax resume and cover letter to Robert M. Steele, President or Bob Trueblood, Vice President:

SEMA Golf LLC

7580 East Gray Road., Ste. 102

Scottsdale, AZ 85260

Ph: 480-951-4086; Fax: 480-951-4081

### SHAPERS WANTED

Golf Course Construction Shaper Needed. Must be willing to travel. Fax resume and date available to 616-547-7009.

### WANTED

Experienced golf course superintendents & agronomy graduates. Send resume to:

SW MO Branch office

STM Enterprises

P.O. Box 4531

Joplin, MO 64803-4531

## SERVICES



CONSULTING • DESIGN • DEVELOPMENT

PROFESSIONAL PRE-DEVELOPMENT

CONSULTATION

SERVICES TO THE GOLF INDUSTRY

- Market Studies
- Feasibility Analyses
- Market Positioning Strategies
- Operation Analysis
- Operating and Marketing Plans

Contact

Mark L. Walley

734-994-8580



GEESSE CONTROL WITH BORDER COLLIES

Keep your Turf Geese Free!!!

Satisfaction Guaranteed - References Available

21 Years of Experience In Training. Call or write:

El-Baff Farm & Kennel

31411 Melson Road, Delmar, Md. 21875

410-896-4268

### BIRD AND BAT HOUSES



• Wildlife Feeders

• Over 70 Items

• Free Catalog

1-800-326-2807

Coveside Conservation Products

## SERVICES

### LASER MEASURING

Laser measuring and sprinkler yardage markers. We do it all! Laser measure & installation of custom metal yardage markers for all types of sprinkler heads.

Fairway Yardage Designs

1-800-368-2448



Specialized Shaping

The Shaping Specialists for over 25 years. Highly creative experience personnel motivated to make your project succeed.

All operators are rated A status shapers. For a green remodel or 18 hole new construction, Specialized Shaping has the personnel to achieve outstanding results within budget. For more information and availability, contact Art Strain, owner/operator 530-521-0829.

## Pond & Lake Liners

PVC • HDPE • EPDM • RPP  
Hypalon • Turf Reinforcement  
Erosion Control

- Over 20 years of Experience
- Custom Fabrication
- Installation Services

Parker, CO 800-524-8672

Kingwood, TX 888-546-4641



Colorado Lining INTERNATIONAL

[www.coloradolining.com](http://www.coloradolining.com)

## MARK ELIOT DESIGN

LANDSCAPE

&

GOLF COURSE DESIGN

### CLUB LANDSCAPING

Design

New Construction

Renovation

&

GOLF COURSE DESIGN

Master Planning

Renovation

Construction Management

MARK E. SOSNOWITZ, ASLA

MARK ELIOT DESIGN

PO BOX 11188

GREENWICH, CT 06831

203-972-9131 Fax: 203-972-9132

## HOW TO ORDER A CLASSIFIED AD

**RATES:** \$90 per column inch (25-35 words, including a bold headline). Each additional 1/4 inch is \$30. If ordering a logo, please indicate and include an extra \$45; for a blind box, please indicate and include an extra \$20. All line ads must be prepaid. All rates are per insertion. For more information, call Jean Andrews at (207) 925-1099. To place your classified ad, mail your ad copy, this form and payment to: Jean Andrews, Golf Course News, PO Box 51, Fryeburg, ME 04037 or fax to: (207) 925-1099.

Your Name \_\_\_\_\_

Company Name \_\_\_\_\_

Address \_\_\_\_\_

City \_\_\_\_\_ State \_\_\_\_\_

Zip \_\_\_\_\_ Daytime Phone \_\_\_\_\_

☐ Payment enclosed, or

☐ Charge to my credit card

☐ Visa/MC \_\_\_\_\_ Exp. date \_\_\_\_\_

☐ Am Ex \_\_\_\_\_ Exp. date \_\_\_\_\_

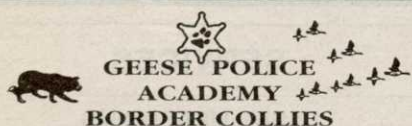
Signature \_\_\_\_\_

☐ Logo

☐ Blind Box

# Classifieds

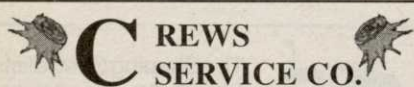
## SERVICES



Will Help You To "Get The Hock Outta There"

Kent & Gwen Kuykendall Phone (336) 824-4278  
2464 Hwy, 22 North Fax (336) 824-4278  
Franklinville, NC 27248 kuykend@asheboro.com

Web Site www.geesepoliceinc.com



Specializing in *Stump Grinding* for  
Golf Courses.

Affordable Prices.  
Professional Service  
Insured for your protection  
50 Stumps or less \$15.00 each  
51 Stumps or more \$10.00 each

1-888-387-8673  
(Toll Free)

Christian Owned/Operated by Ted & Cheryl Crews  
"Help us plan a trip to your course soon."

## GRUND GUIDE

SINCE 1987

Complete Marker Systems

- Sprinkler Yardage • Practice Range
- Cart Path • Fairway & Tee Plaque
- NEW • Sprinkler ID (zone, control box, recycled water)

Laser Measurement Services

- We Measure • Laser Rental

Golf Print Services



"The Yardage Detectives"

(800) 971-7233 FAX (626) 969-3724

## SOLID BRONZE SIGNAGE

- Yardage Markers
- Tee Signs
- 100, 150, 200
- Commemorative
- Laser Measuring
- Sprinkler Tagging



(800) 932-5223  
Fax: (219) 637-6874

Seepage

Control, Inc.

We'll Seal Your Lake  
Empty or Full!

1-800-214-9640

ESS-13 Seals Existing Lakes,  
Also Ideal for New Construction  
Since 1958  
In Phoenix, Arizona, USA

## EAGLE GOLF & LANDSCAPE PRODUCTS

EAGLE INTERFACE FOR GREEN CONSTRUCTION



PLEASE CALL  
FOR A COMPLETE CATALOG

1-800-21-EAGLE

WWW.EAGLEGOLFANDLANDSCAPE.COM

CIRCLE #150

## Keep That Edge



Contact Your Local Distributor or Call Us  
Toll Free 1 (800) 422-4748

CIRCLE #151



Ryan Incorporated Central

COMPLETE GOLF COURSE CONSTRUCTION

We have the supervision, experienced personnel,  
and equipment to meet the tightest schedule  
while producing the highest quality work.

Janesville, Wisconsin Washington, DC  
Patrick Ryan, 608-754-2291 David Ryan, 301-874-5119

Certified Charter Member of Golf Course Builders Association of America

CIRCLE #152



Specializing in golf  
course/ park/ bike  
trail bridges and using a  
variety of materials to  
suit your particular  
landscape needs, we  
fabricate easy-to-install,  
pre-engineered spans  
and deliver them any-  
where in North America.



The Macho Combo: Combines the beauty of wood and the strength  
of maintenance free self-weathering steel. Bridge designed by Golf  
Dimensions.

800-548-0054  
(outside California)

12001 Shoemaker Avenue, Santa Fe Springs, CA 90670  
Tel: 562-944-0701 Fax: 562-944-4025  
www.excelbridge.com

CIRCLE #153

# Golf Course Marketplace

To reserve space in this section, call  
Jean Andrews, 207-925-1099

Tel: 256-845-0154

Fax: 256-845-9750

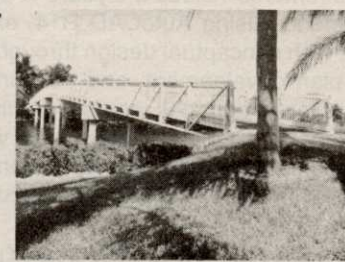


"DELIVERED ACROSS AMERICA"

PEDESTRIAN AND SINGLE LANE  
VEHICULAR BRIDGES  
ENGINEERED AND FABRICATED  
TO YOUR SPECIFIC  
REQUIREMENTS. CLEAR SPANS  
TO 250 FEET AVAILABLE IN MOST  
OF OUR STYLES. FACTORY  
DIRECT.



1-800-749-7515  
www.steadfastbridge.com



10' 6" X 250' CONNECTOR SERIES  
ADMIRALS COVE • JUPITER, FL

CIRCLE #154

You'll want to play  
barefoot on our  
certified grasses.

- Tifton 419
- Midlawn
- El Toro Zoysia
- Meyer Z-52 Zoysia
- Cavalier Zoysia

- Sprig Planting Service
- Laying Machinery
- Rentals
- Row Planting Service

- Lay and Play
- Fairway Cuts (seasonal)
- Pads
- Big Rolls



1-800-666-0007 501-975-6281 www.quailvalley.com

Quail Valley GRASSES

SPORTS • GOLF • COMMERCIAL • RESIDENTIAL • SOG PRODUCERS

barefoot walkin' thick

CIRCLE #155

## TRUE Aerators & Fountains



- NO Maintenance
- Up to 15 HP motors
- UL listed components
- 28+ year history
- Request a catalog...

Aqua Control

Attn: David Thraikill  
800-377-0019  
www.aquacontrolinc.com

CIRCLE #156

## GOOSECHASE

800-662-5021



Repel Geese and Ducks  
from Grass!

Eliminate mess and  
property damage!

Food-grade, biodegradable  
taste-aversion agent.  
Renders food sources  
unpalatable and inedible  
so geese leave. Easy to  
use - just spray onto grass.

1 gallon (per acre) \$95

THE BIRD CONTROL "X-PERTS"



300 N. ELIZABETH ST. DEPT. GCN  
CHICAGO IL 60607  
312-BAN-BIRD 312-226-2480 FAX

CIRCLE #157