

# Golf Course Classifieds

To reserve space in this section, call Jean Andrews 207-925-1099.

## FOR SALE

### EQUIPMENT FOR SALE

1. Massey Ferguson 1260 tractor, 300 hours - \$9,800.
  2. Olathe 986 Diesel disc wood chipper.
  3. Dakota soil mover 400 four foot Hydraulic grading box.
  4. 2 E-Z-GO Beds.
  5. Stainless steel spray tank, 1250 gallons.
  6. Beam Rotomist tree sprayer.
  7. Sisis: Top dresser-PTO driven, 3 point hitch; Fairway Aerifier-PTO driven, 3-point hitch; Multi Slit-PTO driven, 3-point hitch, Two seeders.
  8. 2 Agrotec 140 gallon sprayers with spray hose, 3-point hitch with reels and hose never used.
  9. 3-gang Jacobsen reel mowers.
  10. 9' cutting blade deck mower.
  11. '83 GMC 7000 Flatbed.
  12. '84 GMC Rackbody.
- More available—too much to list.  
Please call (516) 264-5901.

### FOR SALE

Toro Groundsmaster 455-D, 1993 Hydraulic Rotary deck mower, Excellent condition, 4WD, 110" cut, low hours - \$25,000  
Call 412-761-1899.

## HELP WANTED

### CAREER OPPORTUNITIES

Seeking experienced golf course construction supervisors and shapers. Career opportunities with benefit packages for qualified, career minded, individuals with growing Golf Course Construction Company. Send resume to GolfVisions Southwest Attn: Monty Montgomery at 930 White Mountain Dr., Show Low, AZ 85901 or fax to 520-532-1364 or GolfVisions LLC Attn: Tom Jauch at 5900 Heather Ridge Dr., Gurnee, IL or fax to 847-367-6311.

### PROFESSIONAL SUPERINTENDENT

Quarry Hills Golf Club and Conference Center, now under construction, will be a 27-hole, resort/premium daily fee golf club, privately owned and located just 8 miles south of Boston in Quincy, Massachusetts.

This is a career employment opportunity for an outstanding individual with extensive construction and grow-in experience.

Quarry Hills has spectacular views of downtown Boston as well as Boston Harbor. The course is being built on 8 million cubic yards of imported soil excavated from the "Big Dig" highway tunnel construction relocating downtown Boston's Central Artery. Quarry Hills is expected to be completed in 2001. Grassing will commence as areas become available.

This position requires a person with the experience and ability to coordinate the various golf course sub-contractors during construction, monitor the quality of their work, and grow-in and maintain what is destined to be the finest public golf course in Massachusetts.

Apply with confidence to the President: Charles M. Geilich, 40 Bermuda Lake Drive, Palm Beach Gardens, FL 33418.

## HELP WANTED

### GOLF COURSE IRRIGATION CONSTRUCTION

Long term and travel positions at all levels. Contact **Irrigation Systems 800-491-9344** or through our Web site: [www.irrigationsystems.com](http://www.irrigationsystems.com)

### FERRELL'S JOBS IN HORTICULTURE

Need Good Employees? - advertise your openings, to cost effectively connect with more than 2,000 job candidates. Job Hunting? - find employment in the Green Industries with the twice-a-month newspaper that lists more than 200 positions nationally. 6 issues \$24.95. Call: 800-428-2474. Web site: [www.hortjobs.com](http://www.hortjobs.com)

### SHAPERS AND FINISHERS

Quality and experienced individuals needed. Minimum of 3 years experience. Excellent potential to grow with aggressive company.

Fax resume with references to:

EAGLE GOLF CONSTRUCTION, INC.  
(810) 632-6270

### FINISH SHAPER

Finish Shaper Wanted. Fax resume to: Attn. Korry Tilbury at (505) 246-0881 or Mail to: P.O. Box 7819

Albuquerque, NM 87194  
Attn: Korry Tilbury

### SHAPERS-FINISHERS-SUPERVISORS

Experienced golf course construction personnel needed to work directly with architectural firm, primarily in the eastern and midwestern states. Fax resume to 913/621-0760 or mail to Heartland Golf, Inc. 2510 Grand Avenue, Suite 703, Kansas City, MO 64108; Phone (816) 421-0023.

### SHAPERS ONLY!

Sub-contract shaping. Earn up to \$20,000 per month shaping. We pay per hole, supply equipment and fuel. References required. The "shaping only" company:

Golf Courses Consolidated  
P.O. Box 14878

North Palm Beach, FL 33408  
Phone/Fax: 561-842-3366 or  
ForShapers@Juno.com

### NIEBUR GOLF

The nation's leading golf course builder is currently seeking experienced Irrigation Superintendents and Installers. We also have entry level positions for individuals wanting to start a career in golf construction. This is a career opportunity with competitive pay and benefits including 401K, paid housing, health insurance, and a company vehicle for Superintendents.

Forward Resumes to:

Niebur Golf, Inc.

675 Southpointe Ct.  
Colorado Springs, CO 80906  
(719) 527-0313  
(719) 527-0337 Fax  
E-mail: [info@niebur.com](mailto:info@niebur.com)

### SHAPERS WANTED

Golf Course Construction Shaper Needed. Must be willing to travel. Fax resume and date available to 616-547-7009.

## HELP WANTED

### GOLF COURSE DESIGNER

Regional golf course design firm is seeking a talented, golf course designer to assist in preparation of all phases of golf course construction plans. Applicant must have a minimum of 3-5 years experience in preparation of golf course documents and construction supervision. Please send resume and sample plans to:

MRA Golf Services  
139 N. Maine Street  
Suite 200  
Bel Air, Maryland 21014

### OPERATORS/SHAPERS

Munie Outdoor Services, Inc., a growing leader in Golf Course & Sports Turf Construction, is currently seeking Operators/Shapers. Munie offers a suburban St. Louis location, in addition to above-average industry pay and benefits. Qualified candidates will possess a minimum of 2 years operating/shaping experience, the ability to carry out architects' directions, and the ability to meet time and budget goals. A CDL is preferred, but not required. For immediate consideration, please forward a resume, with cover letter and salary history to:

Munie Outdoor Services, Inc.  
Attn: Human Resources  
1000 Milburn School Road  
Caseyville, IL 62232  
Fax (618) 632-5475  
EOE/AA

## OPPORTUNITY

### INVESTMENT OPPORTUNITY

18 Hole fully designed and permitted golf course ready for construction on 240+ acres. It is located on picturesque rolling farm land in Warren, MA. Designed by Cornish, Silva & Mungeam, looking for serious investment opportunity. Call 1-413-436-5705 for more details.

## NOTICE

### REQUEST FOR STATEMENT OF QUALIFICATIONS Comprehensive Golf Course Development Lyndhurst/Rutherford, New Jersey

Notice is hereby given that Statements of Qualifications (SOQs) will be received by the Hackensack Meadowlands Development Commission (HMDC), One DeKorte Park Plaza, Lyndhurst, New Jersey 07071. The HMDC is soliciting firms interested in preparing a comprehensive development plan for a golf course on a landfilled area in the Township of Lyndhurst and Borough of Rutherford, New Jersey.

SOQs will be received at the above address until 3:00 PM prevailing time, on Thursday, July 22, 1999. At the termination of the time for receipt of SOQs, they will be publicly opened and recorded. No SOQs will be accepted after the above time and date.

The Request for Statements of Qualifications and background document package may be examined at the HMDC offices. Copies of the document may be obtained upon payment of a non-refundable \$50.00 fee for each set, and the fee must be received before the documents can be mailed. Documents are available immediately. They do not have to be returned.

The HMDC reserves the right to reject all Statement of Qualifications.

If there are any questions concerning this document, contact Ms. Deborah Lawlor at (201) 460-4671.

## HELP WANTED

### WEST COAST GOLF CONSTRUCTION

Looking for golf shape and finish operators for projects in the western USA. Immediate positions open. High pay, benefits with established aggressive company. Quality oriented dedicated persons send resumes to: West Coast Golf Construction, Inc. 13349 Padani Dr., Redding, CA 96003-7712 (530) 275-6164 FAX (530) 275-4585 or e-mail [DaveP@shasta.com](mailto:DaveP@shasta.com)

### Newgent Golf Inc.

National golf construction firm is seeking qualified shapers, supervisors, foremen, lead men, irrigation superintendents and installers. Send resumes to:

Newgent Golf Inc.

Attn: Jack A. Olander  
V.P. Marketing/Sales  
Fax: 407-846-3069  
EOE M/F/D/V

## REAL ESTATE

### GOLF COURSE FOR SALE

Golf Course for Sale in Pacific NW. 45 miles from Tacoma and 22 miles from Olympia, WA. 18-holes with Clubhouse, driving range and restaurant. Golf Digest 3 & 1/2 Star Award Winner, "Places to Play". For information call (561) 735-3963

### MOTIVATED SELLER IN TEXAS

Six year old, 18 Hole facility with 9 holes lighted, year round play. Located in a high developing area inside a 200,000 populated city. Great potential, below appraisal at 1.75 million. Call Walter Denzer at:

1 - 800 - 811 - 5378

### FOR SALE

18 Hole daily fee golf course in S.E. Ohio, 1 hour from Pittsburgh. Up to 1600 acres available. Nominated by Golf Digest for 1999 "Best Golf Courses in Ohio". For further information contact Dean at 740-937-2373 or e-mail: [polens@eohio.net](mailto:polens@eohio.net)

## SERVICES

**GEESE CONTROL WITH BORDER COLLIES**  
Keep your Turf Geese Free!!!  
Satisfaction Guaranteed - References Available  
21 Years of Experience In Training. Call or write:  
**El-Baff Farm & Kennel**  
31411 Melson Road, Delmar, Md. 21875  
410-896-4268

**FREE TWO-WAY RADIO REPAIRS!**  
**877-2WAYFIX**  
Toll Free (877-292-9349) #GCN-104

**SOLID BRONZE SIGNAGE**

- Yardage Markers
- Tee Signs
- 100, 150, 200
- Commemorative
- Laser Measuring
- Sprinkler Tagging

*From Tee to green*

(800) 932-5223  
Fax: (219) 637-6874

**We'll Seal Your Lake Empty or Full!**

ESS-13 Eliminates The Need For A Synthetic Lake Liner

**Seepage Control, Inc.**

P.O. Box 51177  
Phoenix, Arizona 85076-1177  
800-214-9640 Fax 602-829-1106

Since 1958

**SportsTurf**  
IRRIGATION SALES & SERVICE  
A WATER UTILITIES SERVICES, INC., COMPANY

**Spring Special**  
All Fully Reconditioned & Warranted

Rain Bird Model 51 Internal Assy.	\$ 35
Toro Pilot Valve Assy. w/Sol.	\$ 20
Toro Pilot Valve Assy. w/o Sol.	\$ 10

A Water Utilities Services Company  
(800) 4-Water-U • (800) 492-8378

## NATIONWIDE-IRRIGATION CONTROLLER REPAIR

- Lightning and water damage specialists.
- One Price - normal reconditioning services.
- Fast turnaround, emergency or exchange services.
- Service contracts including the central computer.
- Repairing previously "totaled" equipment.
- Servicing:  
Toro- NW8000, LTC, OSMAC, VT3, VT4, VTII;  
and Rain Bird- MSC, PAR, ISC, SBM.
- Contractor and distributor inquiries welcome.

**BoardTronics, Inc.**  
(formerly ICS)  
P.O. Box 6084 Auburn, CA 95604  
Telephone - 800-782-9938

CIRCLE #149

**SuperParts™**

**Replacement Controller Parts**

- Replacement triac and relay output boards.
- Direct replacement warranty service.
- The highest quality parts available.
- Exclusive ServiceSockets™ for in-field servicing.
- Featuring epoxy sealed and oil lubricate switches.
- Upgraded non-OEM replacement parts for:  
Toro- NW8000, LTC, LTC Plus, OSMAC,  
and Rain Bird- MSC+, PAR+.
- Contractor and distributor inquiries welcome.
- Don't repair - trade-in your damaged OEM boards.

**Irrigation Aftermarket Parts Corp.**  
P.O. Box 5515 Auburn, CA 95604 Call: 800-294-1846

CIRCLE #156

**You'll want to play barefoot on our certified grasses.**

• Tifton 419 • Midlawn • El Toro Zoysia • Meyer Z-52 Zoysia • Cavalier Zoysia

• Spring Planting Service • Laying Machinery • Rentals • Row Planting Service

• Lay and Plant Fairway Cuts (seasonal) • Pads • Big Rolls

P.O. BOX 56440 • LITTLE ROCK, AR 72215  
1-800-666-0007 501-975-6281 www.quailvalley.com

**Quail Valley GRASSES**  
SPORTS • GOLF • COMMERCIAL • RESIDENTIAL • SOD PRODUCERS

*barefoot walkin' thick*

CIRCLE #160

**STAY ON COURSE...**

**GOLF COURSE NEWS ONLINE**

WITH **NEWS** ONLINE

THE NEWSPAPER FOR THE GOLF COURSE INDUSTRY

www.golfcoursenews.com

Tel: 256-845-0154 Fax: 256-845-9750

**STEADFAST BRIDGES**

"DELIVERED ACROSS AMERICA"

PEDESTRIAN AND SINGLE LANE VEHICULAR BRIDGES ENGINEERED AND FABRICATED TO YOUR SPECIFIC REQUIREMENTS. CLEAR SPANS TO 250 FEET AVAILABLE IN MOST OF OUR STYLES. FACTORY DIRECT.

**1-800-749-7515**  
www.steadfastbridge.com

10' 6" X 250' CONNECTOR SERIES  
ADMIRALS COVE • JUPITER, FL

**LAMINATED WOOD BRIDGES**

**PEDESTRIAN & VEHICULAR**  
Order Direct From The Leading Manufacturer in U.S.

- Complete Prefabricated Packages
- Ready for Fast Erection
- Direct Distribution Throughout the U.S.
- Custom Design & Engineering

**ENWOOD STRUCTURES**  
CALL 800-777-8648  
P.O. Box A • Morrisville, NC 27560  
Tel. 919/467-6155 • FAX 919/469-2536

CIRCLE #151

**DURABILITY RELIABILITY FLEXIBILITY**  
Pond and Lake Liners

**Great Lakes Containment, Inc.**  
(616) 258-8800 / (800) 455-7800  
FAX (616) 258-5496  
731 South Cedar Street, P.O. Box 51, Kalkaska, MI 49646  
www.glcpsc.com brian@gtli.com  
SPECIALIZING IN PVC LINERS

CIRCLE #154

**MAXON SP100**  
4 CHANNELS, PL, SCAN

**\$199.75 VHF**  
UHF \$209.75

Call Nationwide Toll-Free  
**1-800-527-1670**

**BEARCOM**  
11545 Pagemill Rd. Dallas, TX 75243 • 214-340-8876 Fax: 214-349-8950

CIRCLE #147

**Ryan Incorporated Central**

COMPLETE GOLF COURSE CONSTRUCTION  
*We have the supervision, experienced personnel, and equipment to meet the tightest schedule while producing the highest quality work.*

Janesville, Wisconsin Washington, DC  
Patrick Ryan, 608-754-2291 David Ryan, 301-874-5119

Certified Charter Member of Golf Course Builders Association of America

CIRCLE #161

**Flymo**

Easy to use  
Lightweight  
Adjustable  
Powerful  
Fast

4 Models  
GCT12  
GCT15  
GCT20  
GCT21

STARTING AT \$299.95

**PRECISION**  
YOUR GOLF COURSE SUPERMARKET  
1-800-345-1960  
ORDER ONLINE WWW.PRECISIONUSA.COM

## Beat The Heat!

WhisperBreeze™ blowers are the newest concept in golf course ventilation. The unique design of the blower allows *the ultimate in ventilating golf course greens*. This helps to eliminate disease, stress, and other problems associated with lack of air movement. Call today **800-345-1960** for more information.

WhisperBreeze™  
Blower



Oh, So Quiet!  
only 63 dba  
at 15 Feet

**PRECISION**  
YOUR GOLF COURSE SUPERMARKET

**THE LEADERS IN AIR MOVEMENT**  
Above and Below Ground

CIRCLE #144

## GOOSECHASE

Repel Geese and Ducks from Grass!  
Eliminate mess and property damage!

Food-grade, biodegradable taste-aversion agent. Renders food sources unpalatable and inedible so geese leave. Easy to use - just spray onto grass.

1 gallon (per acre) \$95  
THE BIRD CONTROL "X-PERTS"

**BIRD-X**

300 N. ELIZABETH ST. DEPT. GCN  
CHICAGO IL 60607  
312-BAN-BIRD 312-226-2480 FAX



CIRCLE #148



1-800-328-2047

**CONTINENTAL BRIDGE**

Where Leadership is Expected  
8301 State Highway 29 N, Alexandria, MN 56308 USA • Phone: 320-852-7500 Fax: 320-852-7067  
E-Mail: conbridg@continentalbridge.com Website: www.continentalbridge.com

CIRCLE #150

## Quality with a Twist

A twist of our easy off lid gives you quick access to Pinhigh's quality reel sharpening compound.

**pinhigh**  
reel sharpening compound

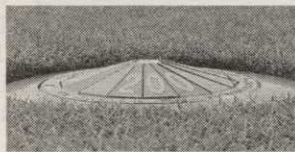
Call 1 (800) 422-4748



CIRCLE #157

## A Visible Marking System You Can Mow Right Over

- ◆ Speeds up play - Reduces playing time up to 30 minutes per round
- ◆ Cost effective - Pays for itself in months - Lasts for years
- ◆ More enjoyment - No pacing and hunting for sprinkler heads
- ◆ Available in all colors
- ◆ Proven at thousands of courses around the world



www: Kirbymarkers.com  
e-mail: Kirbymark@aol.com

**The Kirby Marker System**

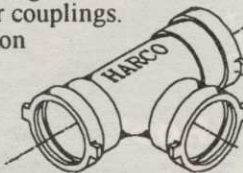
760-931-2624 • 800-925-4729 • Fax 760-931-1753

CIRCLE #158

## HARCO DUCTILE IRON FITTINGS FOR GOLF COURSE IRRIGATION SYSTEMS

Sizes 2" through 12", all configurations including "knock-on" repair couplings. High Strength, high corrosion resistance.

The Harrington Corporation  
P.O. Box 10335  
Lynchburg, Va 24506  
804-845-7094 Fax 845-8562



CIRCLE #155

## Formost Construction Co.

Serving the nation for over 30 years.

Golf Course Builders

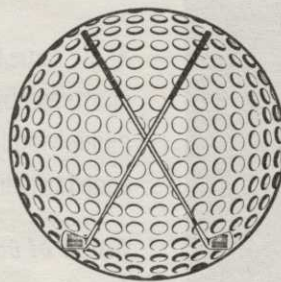
"Doing One Thing Well"

P.O. BOX 559  
TEMECULA, CALIFORNIA 92593

(909) 698-7270

FAX (909) 698-6170

STATE LIC. #267960



CIRCLE #153

## LIST RENTAL

## GOLF COURSE NEWS

THE NEWSPAPER FOR THE GOLF COURSE INDUSTRY

...offers you the opportunity to reach the decision makers at thousands of golf facilities with an exclusive mailing list.

Call for details . . .  
**207-846-0600**

## SERVICES

### LASER MEASURING

Laser measuring and sprinkler yardage markers. We do it all! Laser measure & installation of custom metal yardage markers for all types of sprinkler heads.

Fairway Yardage Designs  
**1-800-368-2448**

### BIRD AND BAT HOUSES

- Wildlife Feeders
- Over 70 Items
- Free Catalog

1-800-326-2807

Coveside Conservation Products

## Pond & Lake Liners

PVC • HDPE • EPDM • RPP  
Hypalon • Turf Reinforcement  
Erosion Control

- Over 20 years of Experience
- Custom Fabrication
- Installation Services

Parker, CO 800-524-8672  
Kingwood, TX 888-546-4641



Colorado Lining  
INTERNATIONAL

www.coloradolining.com

## GRUND GUIDE

SINCE 1987

Complete Marker Systems

- Sprinkler Yardage • Practice Range
- Cart Path • Fairway & Tee Plaque
- NEW • Sprinkler ID (zone, control box, recycled water)

Laser Measurement Services

- We Measure • Laser Rental

Golf Print Services



"The Yardage Detectives"

(800) 971-7233 FAX (626) 969-3724

## MARK ELIOT DESIGN

LANDSCAPE

&

GOLF COURSE DESIGN

CLUB LANDSCAPING

Design

New Construction

Renovation

&

GOLF COURSE DESIGN

Master Planning

Renovation

Construction Management

MARK E. SOSNOWITZ, ASLA

MARK ELIOT DESIGN

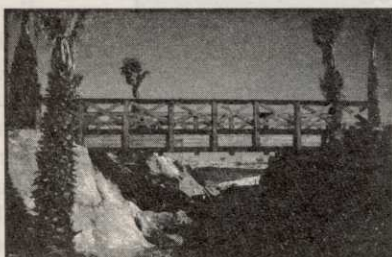
PO BOX 11188

GREENWICH, CT 06831

203-972-9131 Fax: 203-972-9132

**EXCEL**  
BRIDGE MANUFACTURING CO.

Specializing in golf course/ park/ bike trail bridges and using a variety of materials to suit your particular landscape needs, we fabricate easy-to-install, pre-engineered spans and deliver them anywhere in North America.



The Macho Combo: Combines the beauty of wood and the strength of maintenance free self-weathering steel. Bridge designed by Golf Dimensions.

**800-548-0054**  
(outside California)

12001 Shoemaker Avenue, Santa Fe Springs, CA 90670  
Tel: 562-944-0701 Fax: 562-944-4025  
www.excelbridge.com

CIRCLE #152