

Golf Course Classifieds

SERVICES

BIRD AND BAT HOUSES



- Wildlife Feeders
- Over 70 Items
- Free Catalog
- 1-800-326-2807

Coveside Conservation Products

Pond & Lake Liners

PVC • HDPE • EPDM • RPP
Hypalon • Turf Reinforcement
Erosion Control

- Over 20 years of Experience
- Custom Fabrication
- Installation Services

Parker, CO 800-524-8672
Kingwood, TX 888-546-4641



Colorado Lining
INTERNATIONAL

www.coloradolining.com

GRUND GUIDE

SINCE 1987

Complete Marker Systems

- Sprinkler Yardage • Practice Range
- Cart Path • Fairway & Tee Plaque
- NEW • Sprinkler ID (zone, control box, recycled water)

Laser Measurement Services

- We Measure • Laser Rental

Golf Print Services



"The Yardage Detectives"
(800) 971-7233 FAX (626) 969-3724

MARK ELIOT DESIGN

LANDSCAPE
&

GOLF COURSE DESIGN

CLUB LANDSCAPING

Design
New Construction
Renovation

&

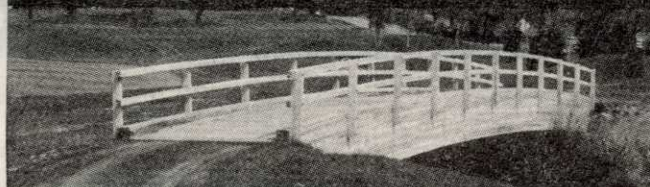
GOLF COURSE DESIGN

Master Planning
Renovation
Construction Management

MARK E. SOSNOWITZ, ASLA

MARK ELIOT DESIGN
PO BOX 11188
GREENWICH, CT 06831
203-972-9131 Fax: 203-972-9132

LAMINATED WOOD BRIDGES



PEDESTRIAN & VEHICULAR

Order Direct From The Leading Manufacturer in U.S.

- Complete Prefabricated Packages
- Ready for Fast Erection
- Direct Distribution Throughout the U.S.
- Custom Design & Engineering



CALL 800-777-8648

P.O. Box A • Morrisville, NC 27560
Tel. 919/467-6155 • FAX 919/469-2536

CIRCLE #162

MAXON SP100

4 CHANNELS, PL, SCAN



\$199.75 VHF
UHF \$209.75

Call Nationwide Toll-Free
1-800-527-1670

BEARCOM

11545 Pagemill Rd. Dallas, TX 75243 • 214-340-8876 Fax: 214-349-8950

CIRCLE #157

Golf Course Marketplace

Superintendents & Top Management follow the news. Reserve your Marketplace advertising today!

Call 207-925-1099 for more information on the *Golf Course News* Marketplace.



Ryan Incorporated Central

COMPLETE GOLF COURSE CONSTRUCTION

We have the supervision, experienced personnel, and equipment to meet the tightest schedule while producing the highest quality work.

Janesville, Wisconsin
Patrick Ryan, 608-754-2291

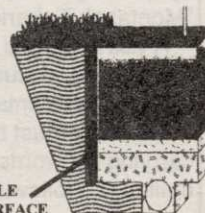
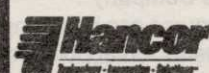
Washington, DC
David Ryan, 301-874-5119

Certified Charter Member of Golf Course Builders Association of America

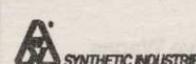
CIRCLE #172

EAGLE GOLF & LANDSCAPE PRODUCTS

EAGLE INTERFACE FOR GREEN CONSTRUCTION



EAGLE INTERFACE



PLEASE CALL FOR A COMPLETE CATALOG



1-800-21-EAGLE

WWW.EAGLEGOLFANDLANDSCAPE.COM

CIRCLE #161

LIST RENTAL

GOLF COURSE NEWS

THE NEWSPAPER FOR THE GOLF COURSE INDUSTRY

...offers you the opportunity to reach the decision makers at thousands of golf facilities with an exclusive mailing list.

Call for details . . .

207-846-0600



DURABILITY
RELIABILITY
FLEXIBILITY

Pond and Lake Liners

Great Lakes Containment, Inc.

(616) 258-8800 / (800) 455-7800

FAX (616) 258-5496

731 South Cedar Street, P.O. Box 51, Kalkaska, MI 49646

www.glcpc.com

brian@glii.com

SPECIALIZING IN PVC LINERS

CIRCLE #164

SuperParts™

Replacement Controller Parts

- Replacement triac and relay output boards.
- Direct replacement warranty service.
- The highest quality parts available.
- Exclusive ServiceSockets™ for in-field servicing.
- Featuring epoxy sealed and oil lubricate switches.
- Upgraded non-OEM replacement parts for: Toro- NW8000, LTC, LTC Plus, OSMAC, and Rain Bird- MSC+, PAR+.
- Contractor and distributor inquiries welcome.
- *Don't repair - trade-in your damaged OEM boards.*

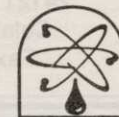
Irrigation Aftermarket Parts Corp.

P.O. Box 5515 Auburn, CA 95604 Call: 800-294-1846

CIRCLE #166

NATIONWIDE-IRRIGATION CONTROLLER REPAIR

- Lightning and water damage specialists.
- One Price - normal reconditioning services.
- Fast turnaround, emergency or exchange services.
- Service contracts including the central computer.
- Repairing previously "totaled" equipment.
- Servicing: Toro- NW8000, LTC, OSMAC, VT3, VT4, VTII; and Rain Bird- MSC, PAR, ISC, SBM.
- Contractor and distributor inquiries welcome.



BoardTronics, Inc.

(formerly ICS)

P.O. Box 6084 Auburn, CA 95604
Telephone - 800-782-9938

CIRCLE #159

Tel: 256-845-0154

Fax: 256-845-9750

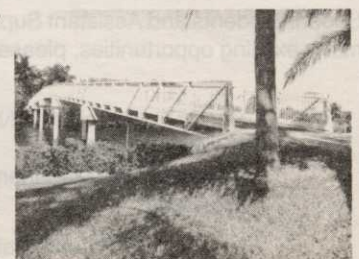


"DELIVERED ACROSS AMERICA"

PEDESTRIAN AND SINGLE LANE VEHICULAR BRIDGES ENGINEERED AND FABRICATED TO YOUR SPECIFIC REQUIREMENTS. CLEAR SPANS TO 250 FEET AVAILABLE IN MOST OF OUR STYLES. FACTORY DIRECT.



1-800-749-7515
www.steadfastbridge.com



10' 6" X 250' CONNECTOR SERIES
ADMIRALS COVE • JUPITER, FL

CIRCLE #173

Flymo



4 Models
GCT12
GCT15
GCT20
GCT21

Easy to use
Lightweight
Adjustable
Powerful
Fast

STARTING AT \$299.95

PRECISION
YOUR GOLF COURSE SUPERMARKET

1-800-345-1960

ORDER ONLINE WWW.PRECISIONUSA.COM

CIRCLE #169

EXCEL
BRIDGE MANUFACTURING CO.



Specializing in golf course/ park/ bike trail bridges and using a variety of materials to suit your particular landscape needs, we fabricate easy-to-install, pre-engineered spans and deliver them anywhere in North America.

The Macho Combo: Combines the beauty of wood and the strength of maintenance free self-weathering steel. Bridge designed by Golf Dimensions.

800-548-0054
(outside California)

12001 Shoemaker Avenue, Santa Fe Springs, CA 90670
Tel: 562-944-0701 Fax: 562-944-4025
www.excelbridge.com

CIRCLE #163

STAY ON COURSE...

WITH **GOLF COURSE NEWS** ONLINE

THE NEWSPAPER FOR THE GOLF COURSE INDUSTRY

www.golfcoursenews.com

Quality with a Twist

A twist of our easy off lid gives you quick access to Pinhigh's quality reel sharpening compound.



pinhigh
reel sharpening compound

Call 1 (800) 422-4748

CIRCLE #167

You'll want to play barefoot on our certified grasses.

Featuring:

- Tifton 419
- Midlawn
- El Toro Zoysia
- Meyer Z-52 Zoysia
- Spring Planting Service
- Laying Machinery Rentals
- Row Planting Service
- Lay and Play Fairway Cuts (warm season)
- Pads
- Big Rolls

P.O. BOX 56440 • LITTLE ROCK, AR 72215
1-800-666-0007 501-280-0763 www.quailvalley.com

Quail Valley GRASSES
SPORTS • GOLF • COMMERCIAL • RESIDENTIAL • SOD PRODUCERS

barefoot walkin' thick

CIRCLE #171

A Visible Marking System You Can Mow Right Over

- Speeds up play - Reduces playing time up to 30 minutes per round
- Cost effective - Pays for itself in months - Lasts for years
- More enjoyment - No pacing and hunting for sprinkler heads
- Available in all colors
- Proven at thousands of courses around the world



The Kirby Marker System

760-931-2624 • 800-925-4729 • Fax 760-931-1753

CIRCLE #168

Turfgrass Pest Management

A correspondence course from Purdue University

Comprehensive training in

- controlling diseases, weeds, insects, and animal pests in turfgrass
- fundamentals of turfgrass management — establishing, maintaining, using chemicals, safety

Complete at your own pace, in your office or at home.

Approved for 3 CEU's by GCSAA; 40 CE hours by PGA of America

Course fee: \$275 in the U.S.; \$335 outside the U.S.

Call 800-830-0269 or 765-494-2748

Purdue University, is an equal access/equal opportunity institution

CIRCLE #170

GOOSECHASE

Repel Geese and Ducks from Grass!

Eliminate mess and property damage!


Food-grade, biodegradable taste-aversion agent. Renders food sources unpalatable and inedible so geese leave. Easy to use - just spray onto grass.

1 gallon (per acre) \$95

THE BIRD CONTROL "X-PERTS"

BIRD-X

300 N. ELIZABETH ST. DEPT. GCN
CHICAGO IL 60607
312-BAN-BIRD 312-226-2480 FAX



CIRCLE #158

HARCO DUCTILE IRON FITTINGS FOR GOLF COURSE IRRIGATION SYSTEMS

Sizes 2" through 12", all configurations including "knock-on" repair couplings. High Strength, high corrosion resistance.



The Harrington Corporation
P.O. Box 10335
Lynchburg, Va 24506
804-845-7094 Fax 845-8562

CIRCLE #165

Crossing Over to Higher Standards



1-800-328-2047

CONTINENTAL BRIDGE

Where Leadership is Expected

8301 State Highway 29 N, Alexandria, MN 56308 USA • Phone: 320-852-7500 Fax: 320-852-7067
E-Mail: conbridg@continentalbridge.com Website: www.continentalbridge.com

CIRCLE #160

| | | |
|-----|------------------------------------|-------|
| 121 | American Cyanamid* | 42 |
| 122 | American Cyanamid | 52 |
| 123 | The Andersons | 45 |
| 154 | Aqua Gen | 3 |
| 151 | Aquatrols | 27 |
| 124 | BASF | 30 |
| 105 | Bayer Corporation | 36-37 |
| 157 | Bearcom | 68 |
| 149 | Becker Underwood | 59 |
| 152 | Ben Meadows Co. | 27 |
| 158 | Bird-X | 69 |
| 159 | BoardTronics | 68 |
| 125 | Club Car | 39 |
| 160 | Continental Bridge | 69 |
| 126 | Dow AgroSciences | 21 |
| 119 | DTN Weather Center | 44 |
| 127 | E-Z-GO | 53 |
| 161 | Eagle Golf & Landscape Products | 68 |
| 162 | Enwood Structures | 68 |
| 163 | Excel Bridge Mfg. | 69 |
| 112 | First National of America | 71 |
| 118 | Flowtronex PSI | 13 |
| 153 | Formost Construction Co. | 43 |
| 113 | GolfSolutions.com LLC | 16 |
| 164 | Great Lakes Containment | 68 |
| 128 | Griffin LLC | 54 |
| 129 | Growth Products | 26 |
| 165 | Harrington/Harco Corporation | 69 |
| 130 | Homestead Nitrogen Corp. | 62 |
| 120 | Hydro Agri North America, Inc. | 20 |
| 131 | IGM | 49 |
| 166 | Irrigation Aftermarket Parts Corp. | 68 |
| 132 | Jacklin Seed Co. | 64 |
| 167 | Jesco Products/Pinhigh | 69 |
| 106 | John Deere | 10-11 |
| 168 | Kirby Markers | 69 |
| 104 | Lesco | 18-19 |
| 156 | Master of the Links | 3 |
| — | NOVARTIS | 4-5 |
| — | NOVARTIS | 14-15 |
| 134 | Nutramax | 66 |
| — | Par Aide | 17 |
| 135 | PBI/Gordon Corporation | 60 |
| 114 | PBI/Gordon Corporation | 34 |
| 169 | Precision Small Engine | 69 |
| 170 | Purdue University | 69 |
| 107 | Pursell Industries | 28-29 |
| 171 | Quail Valley Farms | 69 |
| 136 | Rain Bird | 31 |
| 137 | Regal Chemical | 38 |
| 138 | Regal Chemical | 58 |
| 108 | Rhone-Poulenc* | 22-23 |
| 109 | Rhone-Poulenc | 32-33 |
| 139 | Rohm & Haas | 56 |
| 110 | Rohmid LLC | 40-41 |
| 140 | Roots, Inc. | 57 |
| 172 | Ryan Inc. Central | 68 |
| 141 | Standard Golf | 47 |
| 173 | Steadfast Bridge Co. | 68 |
| 115 | Tee-2-Green | 2 |
| 111 | Textron TCASP | 24-25 |
| 116 | Textron TCASP | 72 |
| 142 | Toro Comm'l. Prod. Div. | 7 |
| 143 | Toro Comm'l. Prod. Div. | 46 |
| 133 | Turf Merchants* | 42 |
| 150 | Turfco, Inc. | 51 |
| 146 | United Horticultural Supply | 6 |
| 155 | York Bridge Concepts | 3 |
| 103 | Zeneca Professional Products | 8-9 |
| 117 | Zeneca Professional Products | 50 |
| 147 | Zeneca Professional Products | 48 |
| 148 | Zeneca Professional Products* | 70 |

*Appears in regional editions.