

BRIEFS



BRANCH GEORGIA'S SUPER OF YEAR

COLUMBUS, Ga. — Don Branch of Green Island Country Club here has been presented the Georgia Golf Course Superintendents Association's 1998 Superintendent of the Year Award. He received the honor at the annual Georgia Golf Hall of Fame banquet.

MAGCS ELECTS MAIBUSCH

BATAVIA, Ill. — The Midwest Association of Golf Course Superintendents has elected Robert Maibusch president of the association. Maibusch is the superintendent at Hinsdale Golf Club in Clarendon Hills. Maibusch succeeds outgoing President Kevin Czerkies of Sportsman's Country Club in Northbrook. Vice president for 1999 is Don Ferreri, superintendent at Seven Bridges Golf Club. Brian Bossert of Bryn Mawr Country Club was elected secretary-treasurer. Elected to two-year terms as directors were Kevin DeRoo of Bartlett Hills Golf Club and Greg Thalmann of Fox Run. Dan Anderson of Fox Valley Golf Club was elected to a one-year term. Current directors with one year remaining are Luke Strojny of Poplar Creek Golf Club, James McNair of Orchard Valley Golf Club and Fred Behnke of Mount Prospect Golf Club.

CASINO MAGIC IN SILVER PROGRAM

A caption in the November issue of GCN identified Casino Magic in Bat St. Louis, Miss., as being a Audubon Gold Signature project. It is a Silver Signature project.

NO SOLUTION IN SIGHT

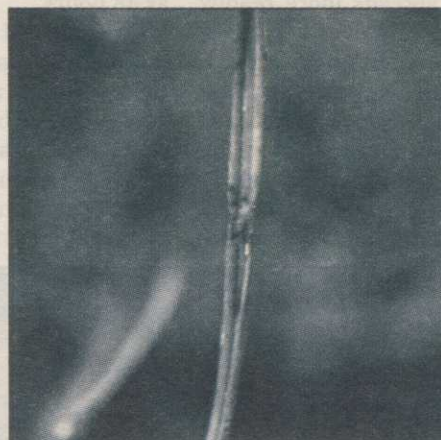
Out of nowhere, gray leaf spot devastates rye, tall fescue

By DR. ERIC K. NELSON

The 1998 gray leaf spot epidemic on perennial ryegrass and tall fescue has raised this previously little-known turf disease to a high level of respect from golf course superintendents and other turfgrass professionals who have witnessed its devastating effects.

Those responsible for developing turfgrass specifications for new golf course construction or renovation projects should be aware of the risk of planting straight perennial ryegrass, or seed mixtures where it predominates, and adjust future recommendations accordingly.

Since "Pennfine" perennial ryegrass was first released under Plant Variety Protection status in the early 1970s and the subsequent proliferation of hundreds



Gray leaf spot — up close and personal.

of new cultivars, some turf managers have been lulled into believing that perennial ryegrass is easy, inexpensive and invincible as a permanent monostand of turf.

Bouts with both winter kill and now disease on perennial ryegrass in the 1990s are beginning to change those perceptions.

HISTORY OF PROBLEMS

The fungus responsible for gray leaf spot on perennial ryegrass (*Pyricularia grisea*) also causes blast of annual ryegrass and gray leaf spot on St. Augustine grass. However, since it was first documented on annual ryegrass in Louisiana and Mississippi in the early 1970s, the fungus had been virtually unreported on any ryegrass until Landschoot and Hoyland (1992) of Penn State University first reported it on perennial ryegrass on golf course fairways in Pennsylvania.

Last year, the disease was observed decimating perennial ryegrass and tall

Continued on page 22



A leaf and debris blower can operate for hours with an auxiliary fuel tank. This version is the one put together for Ridgewood Country Club superintendent Todd W. Raisch by equipment manager Ronny Cestaro.

Terry Buchen photo

Leaf blowing all day with auxiliary tank

By TERRY BUCHEN

PARAMUS, N.J. — Faced with the frustration of their leaf blower running out of gas every 1-1/2 hours, superintendent Todd W. Raisch and his crew at The Ridgewood Country Club here found an easy solution.

Equipment manager Ronny Cestaro hooked up a portable six-gallon auxiliary marine fuel tank, similarly used for

outboard motors, with a hand-operated bulb-type fuel primer.

The Giant Vac Leaf & Debris Blower, which has its own gasoline-powered engine with an electric start off its own battery, is bolt-mounted to the flatbed attachment on a three-wheel Cushman Turf Truckster.

"We've had great results," said Cestaro.

Continued on page 23

CGCS to honor Gordon Witteveen

MISSISSAUGA, Ontario — The Canadian Golf Superintendents Association (CGSA) has nominated Gord Witteveen for the John B. Steel Distinguished Service Award for 1998. The award is given to those who have made an outstanding contribution to the advancement of the profession of the golf course superintendent.



Gordon Witteveen

Witteveen fits the bill. He was one of the founders of the CGSA and has been active in all facets of the organization for the past 30 years. Witteveen was also one of the first editors of *GreenMaster* magazine and continues to write a column called

Continued on page 23

GOLF AND THE ENVIRONMENT

Traveling the wildlife highways

By RON DODSON

In our daily human lives, we travel to a variety of places for a variety of reasons — to work, the grocery store, meetings and social gatherings, and to and from our homes. Some of us even travel from place to place on a golf course — down the fairways by cart or by foot from tee to green. Depending on the purpose of our travel, we use different modes of transportation and different routes.

Wildlife travels as well. Instead of sidewalks, roads and highways, they use their own network of paths and trails. Like humans, their routes depend on the purpose and destination of their travel. They may travel from a thicket of woods to find a pond or stream for water to drink. They

Continued on page 25



The pond buffer on the 16th hole at River Run Golf Course in Berlin, Md.

N.J. Turf Assn. honors Al's Dodson

SELKIRK, N.Y. — The New Jersey Turfgrass Association's distinguished Environmental Steward Award was presented recently to Ron Dodson, president of Audubon International, in Atlantic City at the Trump Taj Mahal.

This award is presented to people or organizations who have performed distinguished service demonstrating dedication to the protection of the environment and preservation of eco-systems. In addition to the award, Dodson's name will appear on the Master Plaque in the Turf Building at Rutgers University, New Brunswick, among such notable past recipients as Robert Shinn, commissioner of the New Jersey Department of Environmental Protection; Judy Bell, former

Continued on page 25