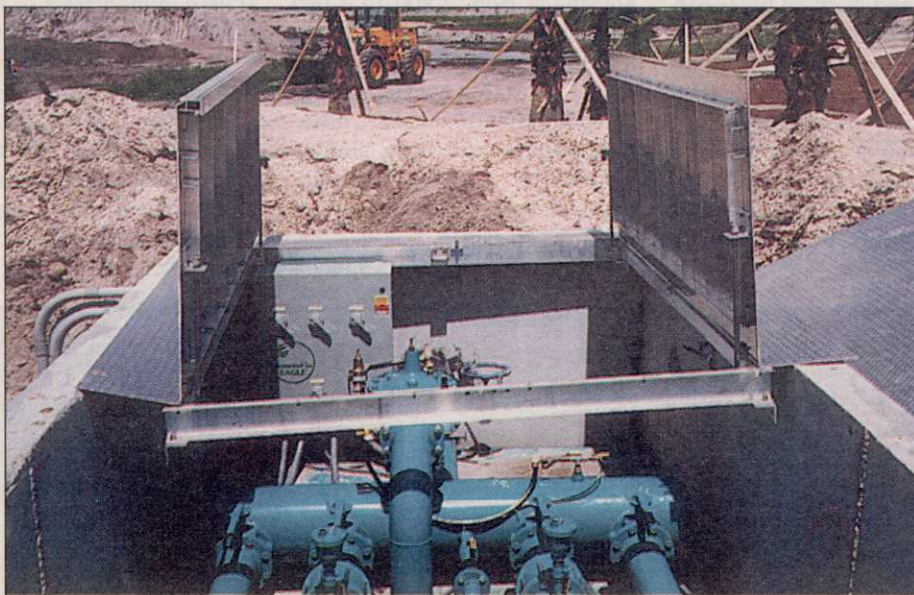


Buried irrigation pump stations may be an answer

Golf course pumping stations are usually located next to a lake that supplies it water. In most cases, a spot can be found around the lake that satisfies the technical requirements without detracting from the beauty of the golf course. However, some golf courses have home and/or "in play" areas bordering all sides of the lake. Finding a good place to put a pumping station can be nearly impossible on these courses.

One such golf course is the Bonaventure Country Club, managed by superintendent Steve Bernard, and located near Fort Lauderdale, Fla. At Bonaventure, the problem was compounded by the fact that the only practical location for the pump station is in full view of the clubhouse. Even worse, the spot was in between a green and a tee that are less than 100 feet apart. A pump house, no matter how small or beautiful, would stand out like a sore thumb at this location. Therefore, a conventional pumping station design was out of the question.

The solution for Bonaventure came from designer Hal Kilpatrick of Irrigation Services Group, in the form of an underground pumping system that uses submersible pumps and a remotely located variable-speed control panel. In addition, this pumping station actually sits inside the wet well. In other words, the wet well doubles as the underground vault. This



SyncroFlo Stealth Eagle pump station.

pump station is truly "out of sight."

This type of pumping station was an absolute necessity for the Bonaventure course, but the possibilities for it extended beyond this one special case. Any course can benefit from having its pumping station hidden from view. If we look at the irrigation system, the piping and sprinkler heads are underground while the satellite control boxes are above ground and set back out of the way. Why not do

the same thing with the pumping station?

The benefits include :

- The station mechanical package is hidden from view.
 - The station is very quiet — due to the submersible motors.
 - Less maintenance — no packing, motor oil, or grease to maintain.
 - There is no pump house to maintain.
- Kilpatrick has used this concept on a number of projects since with great suc-

Sanchez named Toro's Irritrol sales manager in Latin America

BLOOMINGTON, Minn.—The Irritrol Irrigation Products Division of The Toro Company has named Juan Carlos Sanchez as the Irritrol sales manager for Latin America.

Sanchez, who has experience in several facets of the irrigation business, now serves as a source of information, product support, and technical training for Irritrol distributors in Latin America. He will also establish new Irritrol distributorships to expand the brand's reach.

Sanchez earned a degree in architecture in Mexico and also attended Cuyamaca College in San Diego, where he studied irrigation design and horticulture. He is licensed as an architect in Mexico, and is licensed in Texas as an irrigator.

cess. The specific design and engineering work for Bonaventure is that of the manufacturer, SyncroFlo, Inc., of Norcross, Ga, which calls this new product the "Stealth Eagle."

AQUA MASTER AQUA MASTER AQUA MASTER AQUA MASTER AQUA MASTER AQUA MASTER AQUA MASTER AQUA MASTER AQUA MASTER AQUA MASTER AQUA MASTER

Member
The Irrigation Association

GESAA
Affiliate Member

UL LISTED

BEAUTIFUL SOLUTION NUMBER 7.

Crystal Geyser - 2 HP

Standard High Volume Flow - 3 Half HP Units

Wide Geyser - 3 HP

BEAUTY BENEATH THE SURFACE

Aqua Master is the industry's only manufacturer of UL LISTED aerating fountain pump systems. Take a closer look at our beautiful solution to your water quality problems.

Superior Aquatic Management Systems

16024 CTH X, Kiel, WI 53042
PH. 920-693-3121 FAX. 920-693-3634
1-800-693-3144

www.aquamasterfountains.com
email: aquamaster@nigrelli.com

AQUA MASTER AQUA MASTER AQUA MASTER AQUA MASTER AQUA MASTER AQUA MASTER AQUA MASTER AQUA MASTER AQUA MASTER AQUA MASTER