

Golf Course Classifieds

To reserve space in this section, call Jean Andrews 207-925-1099.

FOR SALE

FOR SALE

Toro Groundsmaster 455-D, 1993 Hydraulic Rotary deck mower, Excellent condition, 4WD, 110" cut, low hours - \$25,000
Call 412-761-1899.

EQUIPMENT FOR SALE

1. Massey Ferguson 1260 tractor, 300 hours - \$9,800.
 2. Olathe 986 Diesel disc wood chipper.
 3. Dakota soil mover 400 four foot Hydraulic grading box.
 4. 2 E-Z-GO Beds.
 5. Stainless steel spray tank, 1250 gallons.
 6. Beam Rotomist tree sprayer.
 7. Sisis: Top dresser-PTO driven, 3 point hitch; Fairway Aerifier-PTO driven, 3-point hitch; Multi Slit-PTO driven, 3-point hitch, Two seeders.
 8. 2 Agrotec 140 gallon sprayers with spray hose, 3-point hitch with reels and hose never used.
 9. 3-gang Jacobsen reel mowers.
 10. 9' cutting blade deck mower.
- More available—too much to list.
Please call (516) 264-5901.**

REAL ESTATE

GOLF COURSE FOR SALE

New, 18 hole, 6600 yd, Western KY, rural/tourist destination. Principals and serious inquires only, asking \$4.6M, 502-562-9200.

MOTIVATED SELLER IN TEXAS

Six year old, 18 Hole facility with 9 holes lighted, year round play. Located in a high developing area inside a 200,000 populated city. Great potential, below appraisal at 1.75 million. **Call Walter Denzer at: 1-800-811-5378**

GOLF COURSE FOR SALE

Golf Course for Sale in Pacific NW. 45 miles from Tacoma and 22 miles from Olympia, WA. 18-holes with Clubhouse, driving range and restaurant. Golf Digest 3 & 1/2 Star Award Winner, "Places to Play". **For information call (561) 735-3963**

HELP WANTED

WANTED

SEMA Golf LLC, based in Scottsdale, Arizona, is currently seeking experienced and qualified project superintendents, irrigation supervisors, shapers, and finish operators to join it's team of talented professionals on projects throughout the United States. We offer top compensation packages to those candidates with the qualifications, dedication and desire to develop a career instead of a job. Mail or fax resume and cover letter to:

SEMA Golf LLC

Robert M. Steele, President
7580 East Gray Rd., Suite 102
Scottsdale, AZ 85260
(602) 951-4086 office
(602) 951-4081 fax

SHAPERS/FINISHERS/LABORERS

Quality and experienced individuals needed. Minimum of 3 years experience. Excellent potential to grow with aggressive company.
**Fax resume with references to:
EAGLE GOLF CONSTRUCTION, INC.
(810) 632-6270**

HELP WANTED

GOLF COURSE DESIGNER

Regional golf course design firm is seeking a talented, golf course designer to assist in preparation of all phases of golf course construction plans. Applicant must have a minimum of 3-5 years experience in preparation of golf course documents and construction supervision. Please send resume and sample plans to:

MRA Golf Services
139 N. Maine Street
Suite 200
Bel Air, Maryland 21014

CONSTRUCTION PERSONNEL

Northeast based golf course construction company seeking qualified shapers, supervisors, finishers, and utility operators. Must be willing to travel. **Call (914) 565-7509, or Fax Resume to (914) 565-7501.**

FINISHERS-OPERATORS-DRAINAGE

We are looking for experienced golf construction supervisors and laborers. Must travel East Coast & Midwest. Great potential for advancement. 24 year company with excellent reputation. **Fax Resume to 740-965-2956**

MID-AMERICA GOLF & LANDSCAPE

Golf course construction projects in Midwest. Seeking experienced construction superintendents, shapers, finishers, and irrigation personnel. Qualified individuals send resume to: **Rick Boylan c/o Mid-America Golf & Landscape Inc., 620 SE 291 Hwy, Ste. 104, Lees Summit, MO 64063 or Fax to: (816) 524-0150.**

HELP WANTED

GOLF COURSE IRRIGATION CONSTRUCTION

Irrigation construction personnel at all levels. **Irrigation Systems: 800-491-9344
E-mail: wmichae1@maine.rr.com**

PROFESSIONAL SUPERINTENDENT

Quarry Hills Golf Club and Conference Center, now under construction, will be a 27-hole, resort/premium daily fee golf club, privately owned and located just 8 miles south of Boston in Quincy, Massachusetts.

This is a career employment opportunity for an outstanding individual with extensive construction and grow-in experience.

Quarry Hills has spectacular views of downtown Boston as well as Boston Harbor. The course is being built on 8 million cubic yards of imported soil excavated from the "Big Dig" highway tunnel construction relocating downtown Boston's Central Artery. Quarry Hills is expected to be completed in 2001. Grassing will commence as areas become available.

This position requires a person with the experience and ability to coordinate the various golf course sub-contractors during construction, monitor the quality of their work, and grow-in and maintain what is destined to be the finest public golf course in Massachusetts.

Apply with confidence to the President: Charles M. Geilich, 40 Bermuda Lake Drive, Palm Beach Gardens, FL 33418.

SUPERINTENDENTS AND ASSISTANT SUPERINTENDENTS

Serviscape Inc., a quality focused Chicago region golf course maintenance management company, is now a division of LandCare USA. LandCare is a \$400 million dollar N.Y.S.E. company and a leading nationwide provider of quality commercial landscape services. Serviscape is committed to becoming a leading national company providing high quality golf maintenance. As such, we will require excellent people.

Superintendents and Assistant Superintendents, should you wish to be a candidate for many exciting opportunities, please forward your resume to us.

We Offer

- Strong Potential for Advancement
- Excellent Benefits
- Technical and Management Educational Programs
- Competitive Wages
- Retirement Program
- Relocation Program

Please Mail or Fax your resume to:

**Serviscape Inc., P.O. Box 8658, Michigan City, IN 46361
Fax: 219/872-9417**

TEETH

EWING

If you don't have 'em we're sorry . . . , but if you do and you're looking for something really fun and challenging to sink 'em in to, consider Ewing!

IRRIGATION PRODUCTS

Ewing Irrigation Products is a respected company with over 75 years of history. One of the most aggressive and fastest growing wholesale distributors in the country, Ewing has over 65 locations throughout the Southwestern United States, and is currently expanding its golf product offering throughout the California, Arizona, Nevada, New Mexico, Oklahoma, and Texas markets.

Ewing is looking for a few bright, outgoing, and aggressive **Sales and Service Representatives** to introduce and sell its **Legacy by Hunter** golf line of products. Industry experience a plus, credibility, a must. Successful candidates will call on public and private golf courses, municipalities, architects, and golf course construction companies. Terrific opportunity for super individuals. Full benefits and profit sharing package. Please mail or fax resume w/ salary history to: Golf Sales, Ewing Irrigation, 3441 E. Harbour Dr., Phoenix, AZ 85034, fax: (602) 437-0446.

HELP WANTED

SHAPERS WANTED

Golf Course Construction Shaper Needed. Must be willing to travel. **Fax resume and date available to 616-547-7009.**

CONSTRUCTION FOREMAN/OPERATOR

Established athletic field and golf course construction company seeks motivated foreman with knowledge of construction, operating machinery, drainage, grading, and all related. CDL required. Excellent opportunity, year round employment, 401K, medical benefits. Call 516-691-2381 ext. 19.

FINISH SHAPER

Finish Shaper Wanted. Fax resume to: Attn. Korry Tilbury at (505) 246-0881 or Mail to: P.O. Box 7819

Albuquerque, NM 87194
Attn: Korry Tilbury

SHAPERS ONLY!

Sub-contract shaping. Higher wages plus profit sharing. References required. The "shaping only" company:

Golf Courses Consolidated
P.O. Box 14878
North Palm Beach, FL 33408
or **ForShapers@Juno.com**
or fax resume to 561-692-3387

SERVICES

LASER MEASURING

Laser measuring and sprinkler yardage markers. We do it all! Laser measure & installation of custom metal yardage markers for all types of sprinkler heads.

**Fairway Yardage Designs
1-800-368-2448**

SOLID BRONZE SIGNAGE

- Yardage Markers
- Tee Signs
- 100, 150, 200
- Commemorative
- Laser Measuring
- Sprinkler Tagging



(800) 932-5223
Fax: (219) 637-6874

We'll Seal Your Lake Empty or Full!

**ESS-13 Eliminates
The Need For A
Synthetic Lake Liner**

Seepage
Control, Inc.

P.O. Box 51177
Phoenix, Arizona 85076-1177
800-214-9640 Fax 602-829-1106

Since 1958

SERVICES

BIRD AND BAT HOUSES



- Wildlife Feeders
- Over 70 Items
- Free Catalog

1-800-326-2807
Coveside Conservation Products



GEESE CONTROL WITH BORDER COLLIES
Keep your Turf Geese Free!!!
Satisfaction Guaranteed - References Available
21 Years of Experience In Training. Call or write:

El-Baff Farm & Kennel
31411 Melson Road, Delmar, Md. 21875
410-896-4268

Pond & Lake Liners

PVC • HDPE • EPDM • RPP
Hypalon • Turf Reinforcement
Erosion Control

- Over 20 years of Experience
- Custom Fabrication
- Installation Services

Parker, CO 800-524-8672
Kingwood, TX 888-546-4641



Colorado Lining
INTERNATIONAL

www.coloradolining.com

GRUND GUIDE

SINCE 1987

Complete Marker Systems

- Sprinkler Yardage • Practice Range
- Cart Path • Fairway & Tee Plaque
- NEW • Sprinkler ID (zone, control box, recycled water)

Laser Measurement Services

- We Measure • Laser Rental

Golf Print Services



"The Yardage Detectives"
(800) 971-7233 FAX (626) 969-3724

MARK ELIOT DESIGN

LANDSCAPE

&

GOLF COURSE DESIGN

CLUB LANDSCAPING

Design

New Construction

Renovation

&

GOLF COURSE DESIGN

Master Planning

Renovation

Construction Management

MARK E. SOSNOWITZ, ASLA

MARK ELIOT DESIGN

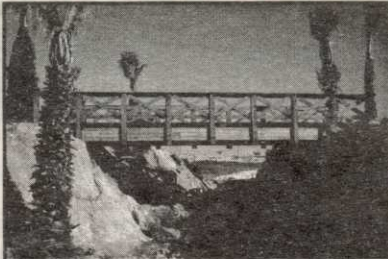
PO BOX 11188

GREENWICH, CT 06831

203-972-9131 Fax: 203-972-9132

EXCEL BRIDGE MANUFACTURING CO.

Specializing in golf course/ park/ bike trail bridges and using a variety of materials to suit your particular landscape needs, we fabricate easy-to-install, pre-engineered spans and deliver them anywhere in North America.



The Macho Combo: Combines the beauty of wood and the strength of maintenance free self-weathering steel. Bridge designed by Golf Dimensions.

800-548-0054
(outside California)

12001 Shoemaker Avenue, Santa Fe Springs, CA 90670
Tel: 562-944-0701 Fax: 562-944-4025
www.excelbridge.com

CIRCLE #165

GOOSECHASE

Repel Geese and Ducks from Grass!

Eliminate mess and property damage!

Food-grade, biodegradable taste-aversion agent. Renders food sources unpalatable and inedible so geese leave. Easy to use - just spray onto grass.

1 gallon (per acre) \$95

THE BIRD CONTROL "X-PERTS"



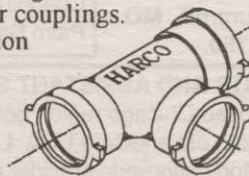
300 N. ELIZABETH ST. DEPT. GCN
CHICAGO IL 60607
312-BAN-BIRD 312-226-2480 FAX

CIRCLE #161



HARCO DUCTILE IRON FITTINGS FOR GOLF COURSE IRRIGATION SYSTEMS

Sizes 2" through 12", all configurations including "knock-on" repair couplings. High Strength, high corrosion resistance.

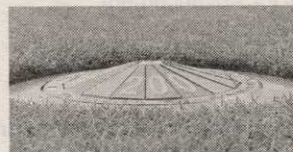


The Harrington Corporation
P.O. Box 10335
Lynchburg, Va 24506
804-845-7094 Fax 845-8562

CIRCLE #168

A Visible Marking System You Can Mow Right Over

- ◆ Speeds up play - Reduces playing time up to 30 minutes per round
- ◆ Cost effective - Pays for itself in months - Lasts for years
- ◆ More enjoyment - No pacing and hunting for sprinkler heads
- ◆ Available in all colors
- ◆ Proven at thousands of courses around the world



www: Kirbymarkers.com
e-mail: Kirbymarkr@aol.com



The Kirby Marker System

760-931-2624 • 800-925-4729 • Fax 760-931-1753

CIRCLE #171

STAY ON COURSE...

WITH **GOLF COURSE NEWS** ONLINE
THE NEWSPAPER FOR THE GOLF COURSE INDUSTRY

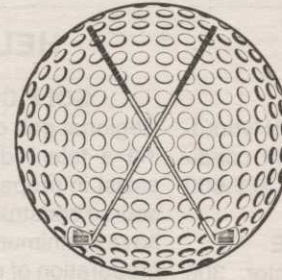
www.golfcoursenews.com

Formost Construction Co.

Serving the nation for over 30 years.

Golf Course Builders

"Doing One Thing Well"



P.O. BOX 559
TEMECULA, CALIFORNIA 92593

(909) 698-7270

FAX (909) 698-6170

STATE LIC. #267960

CIRCLE #166

Keep That Edge



Contact Your Local Distributor or Call Us
Toll Free 1 (800) 422-4748

CIRCLE #170

Flymo

Easy to use
Lightweight
Adjustable
Powerful
Fast

The Original
Hovering Trimmer

ORDER ONLINE WWW.PRECISIONUSA.COM



4 Models
GCT12
GCT15
GCT20
GCT21

STARTING AT
\$299.95

PRECISION
YOUR GOLF COURSE SUPERMARKET

1-800-345-1960

CIRCLE #172



8301 State Highway 29 N, Alexandria, MN 56308 USA • Phone: 320-852-7500 Fax: 320-852-7067
E-Mail: conbridg@continentalbridge.com Website: www.continentalbridge.com

CIRCLE #163

LIST RENTAL

GOLF COURSE NEWS

THE NEWSPAPER FOR THE GOLF COURSE INDUSTRY

...offers you the opportunity to reach the decision makers at thousands of golf facilities with an exclusive mailing list.

Call for details . . .

207-846-0600