

## CALENDAR

### September

7-10 — *Responsible Industry for a Sound Environment annual meeting in Palm Beach, Fla.* Contact 202-872-3860.

10-11 — *Southwest Horticultural Trade Show in Phoenix.* Contact Cheryl Goar at 602-966-1610.

17-21 — *Florida Turfgrass Conference in Tampa.* Contact 800-882-6721.

22-24 — *Turf and Landscape Field Days in Blacksburg, Va.* Contact David McKissack at 540-231-5897.

### October

26-27 — *Golf Course News' Public Golf Forum in Palm Springs, Calif.* Contact GCN Conference Group at 207-846-0600.

### November

1-3 — *International Irrigation Expo in San Diego, Calif.* Contact 703-573-3551.

1-3 — *Georgia GCSA annual meeting at St. Simons Island.* Contact Karen White at 706-769-4076.

3-5 — *Penn State Golf Turf Conference in State College, Pa.* Contact 814-863-3475.

4-5 — *Heart of America GCSA Annual Golf & Turf Conference in North Kansas City, Mo.* Contact 816-561-5323.

4-6 — *Penn State Golf Turf Conference in State College, Pa.* Contact 814-863-3475.

9-12 — *West Virginia GCSA Turf Conference and Show in Morgantown, W. Va.* Contact Robert Maguire at 304-243-4154.

9-13 — *New York State Turf & Grounds Exposition in Syracuse, N.Y.* Contact 800-873-8873.

11-13 — *Midwest Turfgrass & Ornamental Seminar in Lafayette, Ind.* Contact Bev Bratton at 765-494-8039.

13-17 — *Professional Lawn Care Association of America Annual Conference in Nashville, Tenn.* Contact 800-458-3466.

16 - Dec. 11 — *Turf Managers Short Course, University of Guelph, Ontario Canada.* Contact Peggy Nagle at 519-824-4120, Ext. 3814.

### December

1 — *North Central Turfgrass Exposition in St. Charles, Ill.* Contact 312-201-0101.

7-10 — *Ohio Turfgrass Conference in Columbus.* Contact 614-760-5442.

8-10 — *Georgia Turfgrass Show in Atlanta.* Contact 770-975-4123.

9-11 — *Rocky Mountain Regional Turfgrass Association Conference in Denver.* Contact 303-770-2220.

\* For more information contact the GCSAA Education Office at 800-472-7878.

Periodicals postage paid at Yarmouth, Maine, and additional mailing office. *Golf Course News* (ISSN 1054-0644) is published monthly by United Publications, Inc., 106 Lafayette St., P.O. Box 997, Yarmouth, ME 04096. Phone number is 207-846-0600.

The publisher assumes no responsibility for unsolicited material or prices quoted in the newspaper. Contributors are responsible for proper release of proprietary classified information. Copyright 1998 by United Publications Inc. All rights reserved. Reproduction, in whole and in part, without the written permission from the publisher is expressly prohibited. Photocopies of *Golf Course News* are available through University Microfilms International, Serials Acquisitions Dept., 300 N. Zeeb Road, Ann Arbor, MI 48106, 800-732-0616.

Reprints and permission to reprint may be obtained from Managing Editor of *Golf Course News*. Back issues, when available, cost \$6 each within the past 12 months, \$12 each prior to the past 12 months. Back issue orders must be paid in advance either by check or charged to American Express, Visa or MasterCard.

*Golf Course News* is distributed in the U.S. without charge to qualified personnel of golf course facilities and to golf course builders, developers and architects. Subscriptions to Canadian golf facilities cost \$45 annually; other paid subscriptions to the U.S. and Canada cost \$55. All foreign subscriptions cost \$125 annually to cover air delivery. All payments must be made in U.S. funds drawn on a U.S. bank. For subscriber services, please call 215-788-7112. Send address changes to *Golf Course News*, P.O. Box 3047, Langhorne, Pa. 19047-3047.

## Golf Course Marketplace

To reserve space in this section, call Jean Andrews, 207-925-1099



### BRIDGING ANY SPACE

1-800-328-2047

CONTINENTAL  
BRIDGE

8301 State Highway 29 N, Alexandria, MN 56308 USA  
Phone: 320-852-7500 Fax: 320-852-7067  
E-Mail: conbridg@carlos.polaristel.net • www.continentalbridge.com

CIRCLE #143

**DURABILITY  
RELIABILITY  
FLEXIBILITY**  
Pond and Lake Liners

**Great Lakes Containment, Inc.**  
(616) 258-8800 / (800) 455-7800  
FAX (616) 258-5496  
731 South Cedar Street, P.O. Box 51, Kalkaska, MI 49646  
www.glcpsc.com brian@glii.com  
SPECIALIZING IN PVC LINERS

CIRCLE #148

**Ryan Incorporated Central**

COMPLETE GOLF COURSE CONSTRUCTION  
*We have the supervision, experienced personnel,  
and equipment to meet the tightest schedule  
while producing the highest quality work.*

Janesville, Wisconsin Washington, DC  
Patrick Ryan, 608-754-2291 David Ryan, 301-874-5119  
Certified Charter Member of Golf Course Builders Association of America

CIRCLE #155

**DIRTY BIRDS a PROBLEM??**  
Scare them away with harmless,  
**APPROVED, ENVIRONMENTALLY SAFE  
BIRD CONTROL NOISEMAKERS**

**UNIQUE, MORE DISCREET PRODUCTS  
ESPECIALLY FOR GOLF COURSES  
near residential areas are available.**

**We CAN help solve your bird problems.  
CALL TODAY: 1-800-582-8843  
JPF Distributors**

CIRCLE #151

**FAST, EFFICIENT & SAFE**

**TurfTac™**  
**THE BIODEGRADABLE  
TURF STAPLE SYSTEM**

Secures turf effortlessly  
NO MORE back breaking labor  
NO MORE mower damage  
ENVIRONMENTALLY FRIENDLY

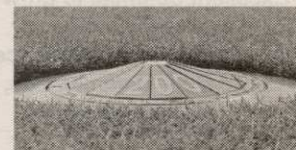
**EcoTurf, Inc. 888-TurfTac**

300 N. ELIZABETH ST., DEPT. GCN, CHICAGO, IL 60607  
312-226-0099 • FAX 312-226-2480

CIRCLE #144

### A Visible Marking System You Can Mow Right Over

- ◆ Speeds up play - Reduces playing time up to 30 minutes per round
- ◆ Cost effective - Pays for itself in months - Lasts for years
- ◆ More enjoyment - No pacing and hunting for sprinkler heads
- ◆ Available in all colors
- ◆ Proven at thousands of courses around the world



www.kirbymarkers.com

**The Kirby Marker System**

760-931-2624 • 800-925-4729 • Fax 760-931-1753

CIRCLE #152

**MAXON SP100**  
**4 CHANNELS, PL, SCAN**

**\$199<sup>75</sup> VHF**  
**UHF \$209<sup>75</sup>**

**Call Nationwide Toll-Free  
1-800-527-1670**

**BEARCOM**

11545 Pagemill Rd. Dallas, TX 75243 • 214-340-8876 Fax: 214-349-8950

CIRCLE #141

**LAMINATED  
WOOD BRIDGES**

**PEDESTRIAN & VEHICULAR**  
**Order Direct From The Leading Manufacturer in U.S.**

- Complete Prefabricated Packages
- Ready for Fast Erection
- Direct Distribution Throughout the U.S.
- Custom Design & Engineering

**EnWood STRUCTURES**  
MANUFACTURER OF ENGINEERED WOOD PRODUCTS  
www.enwood.com

**CALL 800-777-8648**  
P.O. Box A • Morrisville, NC 27560  
Tel. 919/467-6155 • FAX 919/469-2536

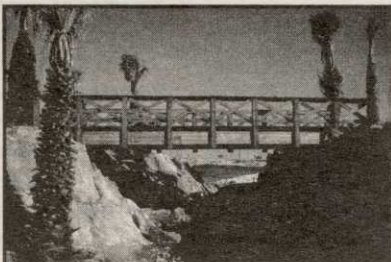
CIRCLE #145

# Golf Course Marketplace

To reserve space in this section, call Jean Andrews, 207-925-1099

## EXCEL BRIDGE MANUFACTURING CO.

Specializing in golf course/ park/ bike trail bridges and using a variety of materials to suit your particular landscape needs, we fabricate easy-to-install, pre-engineered spans and deliver them anywhere in North America.



The Macho Combo: Combines the beauty of wood and the strength of maintenance free self-weathering steel. Bridge designed by Golf Dimensions.

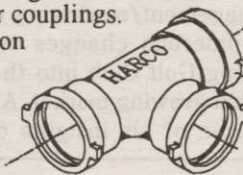
800-548-0054

12001 Shoemaker Avenue, Santa Fe Springs, CA 90670  
Tel: 562-944-0701 Fax: 562-944-4025

CIRCLE #146

## HARCO DUCTILE IRON FITTINGS FOR GOLF COURSE IRRIGATION SYSTEMS

Sizes 2" through 12", all configurations including "knock-on" repair couplings. High Strength, high corrosion resistance.

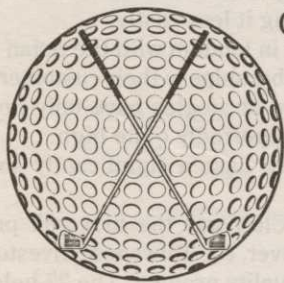


The Harrington Corporation  
P.O. Box 10335  
Lynchburg, Va 24506  
804-845-7094 Fax 845-8562

CIRCLE #149

## Formost Construction Co.

Serving the nation for over 30 years.



Golf Course Builders  
"Doing One Thing Well"

P.O. BOX 559  
TEMECULA, CALIFORNIA 92593

(909) 698-7270  
FAX (909) 698-6170

STATE LIC. #267960

CIRCLE #147

## Quality with a Twist

A twist of our easy off lid gives you quick access to Pinhigh's quality reel sharpening compound.



pinhigh  
reel sharpening compound

Call 1 (800) 422-4748

CIRCLE #150

## GOOSECHASE

Repel Geese and Ducks from Grass!  
Eliminate mess and property damage!

Safe, biodegradable taste-aversion agent. Renders food sources unpalatable and inedible so geese leave. Easy to use - just spray onto grass.

1 gallon (per acre) \$95

THE BIRD CONTROL "X-PERTS"



300 N. ELIZABETH ST. DEPT. GCN  
CHICAGO IL 60607  
312-BAN-BIRD 312-226-2480 FAX

CIRCLE #142

## Keep Your Divot Seed Mixture Where It Is Used ...



... in Divot Seed & Soil tee buckets next to the tee markers. Available in Cedar or Redwood slats and with companion TrashM debris buckets.



Ask Your Golf Course Distributor for INNOVATIVE MAINTENANCE PRODUCTS

From Master of the Links

P.O. Box 1865, Lombard, IL 60148-1865  
(630) 627-1100 • Fax (630) 627-1104



CIRCLE #153

## You'll want to play barefoot on our certified grasses.

Featuring

- Tifton 419
- Midlawn
- El Toro Zoysia
- Meyer Z-52 Zoysia
- Sprig Planting Service
- Laying Machinery Rentals
- Row Planting Service
- Lay and Play Fairway Cuts (warm season)
- Pads
- Big Rolls

P.O. BOX 56440 • LITTLE ROCK, AR 72215  
1-800-666-0007 501-280-0763 www.quailvalley.com

Quail Valley GRASSES

SPORTS • GOLF • COMMERCIAL • RESIDENTIAL • SOD PRODUCERS

barefoot walkin' thick

CIRCLE #154

119 40th St. NE



Fort Payne, AL 35967

"DELIVERED ACROSS AMERICA"

PEDESTRIAN AND SINGLE LANE VEHICULAR BRIDGES ENGINEERED AND FABRICATED TO YOUR SPECIFIC REQUIREMENTS. CLEAR SPANS TO 220 FEET AVAILABLE IN MOST OF OUR STYLES. FACTORY DIRECT.



1-800-749-7515  
www.steadfastbridge.com



10' 6" X 250' CONNECTOR SERIES  
ADMIRALS COVE • JUPITER, FL

CIRCLE #156

117	American Cyanamid*	6
118	American Cyanamid	34
135	The Andersons	42
141	Bearcom	44
142	Bird-X	45
—	Club Car	13
143	Continental Bridge	44
136	E.F. Burlingham & Sons	42
107	E-Z-GO	26
144	EcoTurf, Inc.	44
145	Enwood Structures	44
146	Excel Bridge Mfg.	45
113	Flowtronex PSI	9
119	FMAC Golf Finance Group	29
147	Formost Construction Co.	45
148	Great Lakes Containment	44
149	Harrington/Harco Corporation	45
120	Homestead Nitrogen Corp.	30
116	Hydro Agri North America, Inc.	20
121	IGM	28
150	Jesco Products/Pinhigh	45
103	John Deere	4-5
151	JPF Distributors	44
152	Kirby Markers	44
157	Kubota	47
122	Lebanon Turf Products	38
153	Master of the Links	45
104	Milorganite	24-25
132	National Mower	31
—	NOVARTIS	16-17
123	Nutramax	40
112	Palmer Course Design	21
140	Partac Peat	46
133	PBI/Gordon Corporation	33
124	Pennington Seed	41
—	Public Golf Forum	12
102	Pursell Industries	10-11
154	Quail Valley Farms	45
131	Redexim Charterhouse	31
139	RJ Advantage	42
155	Ryan Inc. Central	44
125	Seed Research of Oregon	36
126	Smithco	19
127	Standard Golf	18
156	Steadfast Bridge Co.	45
110	Tee-2-Green	2
—	Terra Industries	9
128	Terra Industries	37
111	Textron	48
106	Toro Comm'l. Prod. Div.	14-15
134	Turfco, Inc.	33
137	Turflite, Inc.	46
129	Ty-Crop	32
130	United Horticultural Supply	7
114	Watertronics	3
138	York Bridge Concepts	46
105	Zeneca Professional Products	22-23

\*Appears in regional edition.