

March

- 2 — GCSAA Seminar on Design, Construction and Maintenance of Chemical Storage Facilities in Providence, R.I. *
- 2 — GCSAA Seminar on The Superintendent as Grow-in Manager in Sioux Falls, S.D. *
- 2-3 — GCSAA Seminar on Managerial Productivity in York, Pa. *
- 3 — GCSAA Seminar on Enhancing Your Value as a Professional Golf Course Superintendent in Gaylord, Mich. *
- 3-4 — GCSAA Seminar on Managing People for Peak Performance and Job Satisfaction in St. Louis, Mo. *
- 3-5 — New England Regional Turf Conference in Providence, R.I. Contact 401-848-0004.
- 4 — GCSAA Seminar on Employee Safety Training in Gaylord, Mich. *
- 6 — GCSAA Seminar on Wildlife Management and Habitat Conservation in Cleveland. *
- 7-10 — Canadian International Turfgrass Conference & Trade Show in Calgary, Alberta, Canada. Contact 800-387-1056.
- 9 — GCSAA Seminar on Turfgrass Stress Management in Birmingham, Ala. *
- 10 — Community Tree Conference in Amherst, Mass. Contact Dennis Ryan at 413-545-6626.
- 10 — GCSAA Seminar on Preventive Maintenance of Turf Equipment in Johnstown, Pa. *
- 10-11 — GCSAA Seminar on Managing People for Peak Performance and Job Satisfaction in Minneapolis. *
- 11 — GCSAA Seminar on The Microbiology of Turfgrass Soils in Cincinnati. *
- 17 — GCSAA Seminar on Enhancing Your Value as a Professional Golf Course Superintendent in Lake Harmony, Pa. *
- 17 — GCSAA Seminar on Wetlands and Golf Courses in Manchester, Vt. *
- 17-18 — GCSAA Seminar on Spanish for Golf Course Management I in Palm Desert, Calif. *
- 18 — GCSAA Seminar on Time Management for the Golf Course Superintendent in Rockport, Maine. *
- 18-20 — Maine Turfgrass Conference and Show in Rockport.
- 24 — GCSAA Seminar on Irrigation Water Quality in San Antonio, Texas. *
- 24-25 — GCSAA Seminar on Golf Greens: History, Theory, Construction and Maintenance in Philadelphia. *

April

- 25-30 — American Society of Golf Course Architects Annual Meeting in Los Angeles. Contact 312-372-7090.

May

- 4-5 — Equipment & Engine Training Council annual meeting in Milwaukee. Contact Virgil Russell at 512-442-1788.

July

- 13 — William C. Campbell Scholarship & Research Fund Tournament in Charleston, W. Va. Contact Judy Eddy at 614-373-5145.
- 16-18 — Turfgrass Producers International Summer Convention and Field Days in Tysons Corner, Va. Contact 847-705-9898.

August

- 1-4 — Georgia GCSA Summer Conference in Augusta. Contact Karen White at 706-769-4076.

* For more information contact the GCSAA Education Office at 800-472-7878.

Golf Course Marketplace

To reserve space in this section, call Trish Hoffman, 207-846-0600

NOTICE OF INTENT AND REQUEST FOR INTEREST

The Idaho Division of Environmental Quality (DEQ), in cooperation with the Environmental Protection Agency, is currently planning and designing for the final remediation and closure of an approximately 200 acre portion of the Bunker Hill Superfund Site known as the Central Impoundment Area (CIA) pursuant to the authorities and requirement of the Comprehensive Environmental Response, Compensation, and Liability Act. The CIA is located adjacent to the city of Kellogg in Shoshone County, Idaho. DEQ has considered future land uses which could be incorporated into the final design of the CIA and has preliminarily determined that the construction and operation of golf facilities is a viable potential use. DEQ intends to plan and design final closure of the CIA to accommodate golf course facilities if sufficient interest is demonstrated by person(s) capable and willing to commit to financing, design, construction and operation of a golf course facility. Accordingly, DEQ requests that any such interested person(s) contact its contractor TerraGraphics at the below address and phone number for further information and instruction. Written statements of qualifications and interest are requested by March 25, 1998 at the below address: TerraGraphics Environmental Engineering, Inc., 108 W. Idaho, Kellogg, ID 83837, phone (208) 786-1206, fax (208) 786-1209

CIRCLE #189



HOVER MOWERS

- Metal Edge Cutting Blades
- Full One Year Warranty
- Polyethylene Deck (won't crack or break)

VIDEO AVAILABLE

16 INCH MOWER

- 2 HP Robin or Tecumseh Engine
- 20 lbs.

19 INCH MOWER

- 5 HP Tecumseh Engine
- 4 cycle w/positive pressure pump
- 32 lbs.

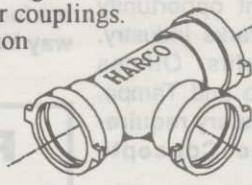
TOLL FREE 1-800-760-1680

87 BELL ST., PORTLAND, ME 04103 Fax: 207-878-9109

CIRCLE #178

HARCO DUCTILE IRON FITTINGS FOR GOLF COURSE IRRIGATION SYSTEMS

Sizes 2" through 12", all configurations including "knock-on" repair couplings. High Strength, high corrosion resistance.

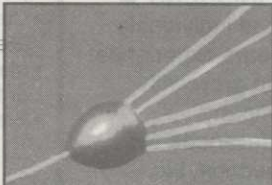


The Harrington Corporation
P.O. Box 10335
Lynchburg, Va 24506
804-845-7094 Fax 845-8562

CIRCLE #179

TURN ON THE PRESSURE

You have **THE BULLET**— This tile cleaning nozzle flushes the sand and dirt from drain lines — there are five flushing nozzles and one lead (cutting) nozzle. **NOW LET THE WATER FLOW!**



Ask Your Golf Course Distributor for **INNOVATIVE MAINTENANCE PRODUCTS**

From *Master of the Links*

P.O. Box 1865, Lombard, IL 60148-1865
630-627-1100 • Fax 630-627-1104

CIRCLE #183

FAST, EFFICIENT & SAFE

TurfTacs

THE BIODEGRADABLE TURF STAPLE SYSTEM

Secures turf effortlessly
NO MORE back breaking labor
NO MORE mower damage
ENVIRONMENTALLY FRIENDLY

EcoTurf, Inc. 888-TurfTac
300 N. ELIZABETH ST., DEPT. GCN, CHICAGO, IL 60607
312-226-0099 • FAX 312-226-2480

CIRCLE #174

EXCEL BRIDGE MANUFACTURING CO.

Specializing in golf course/ park/ bike trail bridges and using a variety of materials to suit your particular landscape needs, we fabricate easy-to-install, pre-engineered spans and deliver them anywhere in North America.



The Macho Combo: Combines the beauty of wood and the strength of maintenance free self-weathering steel. Bridge designed by Golf Dimensions.

800-548-0054
(outside California)

12001 Shoemaker Avenue, Santa Fe Springs, CA 90670
Tel: 562-944-0701 Fax: 562-944-4025

CIRCLE #176

GOOSECHASE

Repel Geese and Ducks from Grass! Eliminate mess and property damage!



Safe, biodegradable taste-aversion agent. Renders food sources unpalatable and inedible so geese leave. Easy to use — just spray onto grass.

1 gallon (per acre) \$95

THE BIRD CONTROL "X-PERTS"



300 N. ELIZABETH ST. DEPT. GCN
CHICAGO IL 60607
312-BAN-BIRD 312-226-2480 FAX

CIRCLE #171



Ryan Incorporated Central

COMPLETE GOLF COURSE CONSTRUCTION

We have the supervision, experienced personnel, and equipment to meet the tightest schedule while producing the highest quality work.

Janesville, Wisconsin Washington, DC
Patrick Ryan, 608-754-2291 David Ryan, 301-874-5119

Certified Charter Member of Golf Course Builders Association of America

CIRCLE #187

MAXON SP100 4 CHANNELS, PL, SCAN

\$199⁷⁵ VHF
UHF \$209⁷⁵

Call Nationwide Toll-Free
1-800-527-1670



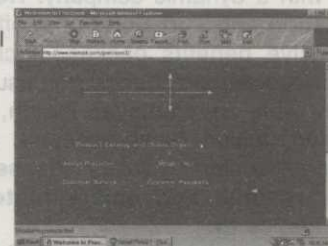
BEARCOM

11545 Pagemill Rd. Dallas, TX 75243 • 214-340-8876 Fax: 214-349-8950

CIRCLE #170

PRECISION is NOW ONLINE!

- Place orders online.
- Take advantage of special promotions.
- Review the newest products.
- Monthly specials only at our web site.
- Get expert technical support.
- Fast service for our international customers.



You Can Order Online Today At
www.precisionusa.com

CIRCLE #184

Ball Washer Refurbishment

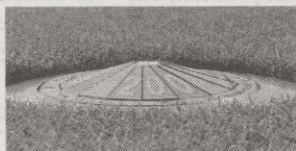
- **Ball washers, benches, tee markers, etc. restored to like new condition for a fraction of the cost of new.**
- **Saves money over in house refurbishment.**
- **Reduces time demands on staff as GCSinc. manages the process from disassembly through re-assembly.**
- **Includes; sandblasting, welding & powder coating.**
- **Service Nationwide...Representative Inquires Welcome.**

Golf Course Solutions 714-427-5400 (fax) 5411
2127 S. Grand Ave., Santa Ana, CA 92705

CIRCLE #177

A Visible Marking System You Can Mow Right Over

- ◆ Speeds up play - Reduces playing time up to 30 minutes per round
- ◆ Cost effective - Pays for itself in months - Lasts for years
- ◆ More enjoyment - No pacing and hunting for sprinkler heads
- ◆ Available in all colors
- ◆ Proven at thousands of courses around the world

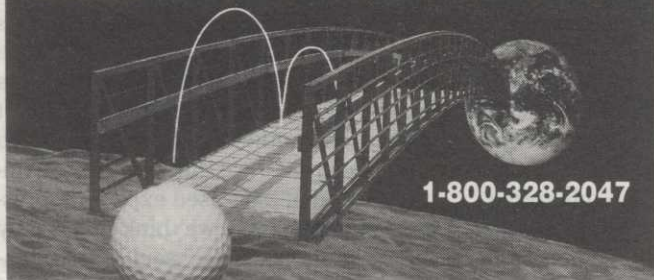


The Kirby Marker System

760-931-2624 • 800-925-4729 • Fax 760-931-1753

CIRCLE #182

BRIDGING ANY SPACE



1-800-328-2047

**CONTINENTAL™
BRIDGE**

8301 State Highway 29 N, Alexandria, MN 56308 USA
Phone: 320-852-7500 Fax: 320-852-7067

E-Mail: conbridg@carlos.polaristel.net • www.continentalbridge.com

CIRCLE #173

You'll want to play barefoot on our certified grasses.



- Featuring*
- Tifton 419
 - Midlawn
 - El Toro Zoysia
 - Meyer Z-52 Zoysia
 - Sprig Planting Service
 - Laying Machinery Rentals
 - Row Planting Service
 - Lay and Play Fairway Cuts (warm season)
 - Pads
 - Big Rolls

P.O. BOX 58440 • LITTLE ROCK, AR 72215

1-800-666-0007 501-280-0763 www.quailvalley.com

Quail Valley GRASSES

SPORTS • GOLF • COMMERCIAL • RESIDENTIAL • SOD PRODUCERS

barefoot walkin' thick

CIRCLE #186

STAY ON COURSE...

WITH **GOLF COURSE NEWS** ONLINE

THE NEWSPAPER FOR THE GOLF COURSE INDUSTRY

www.golfcoursenews.com

Flymo

Easy to use
Lightweight
Adjustable
Powerful
Fast

The Original
Hovering Trimmer



4 Models
GCT12
GCT15
GCT20
GCT21

STARTING AT
\$299.95

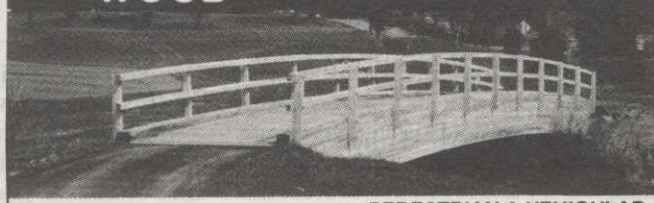
PRECISION
YOUR GOLF COURSE SUPERMARKET

1-800-345-1960

ORDER ONLINE WWW.PRECISIONUSA.COM

CIRCLE #185

LAMINATED WOOD BRIDGES



PEDESTRIAN & VEHICULAR

Order Direct From The Leading Manufacturer in U.S.

- Complete Prefabricated Packages
- Ready for Fast Erection
- Direct Distribution Throughout the U.S.
- Custom Design & Engineering



CALL 800-777-8648

P.O. Box A • Morrisville, NC 27560
Tel. 919/467-6155 • FAX 919/469-2536

CIRCLE #175

Quality with a Twist

A twist of our easy off lid gives you quick access to Pinhigh's quality reel sharpening compound.

pinhigh
reel sharpening compound

Call 1 (800) 422-4748



CIRCLE #180

DIRTY BIRDS a PROBLEM??

Scare them away with harmless,
**APPROVED, ENVIRONMENTALLY SAFE
BIRD CONTROL NOISEMAKERS**

**UNIQUE, MORE DISCREET PRODUCTS
ESPECIALLY FOR GOLF COURSES**
near residential areas are available.

We CAN help solve your bird problems.
CALL TODAY: 1-800-582-8843
JPF Distributors

CIRCLE #181

119 40th St. NE Fort Payne, AL 35967

STEADFAST BRIDGES

"DELIVERED ACROSS AMERICA"
PEDESTRIAN AND SINGLE LANE
VEHICULAR BRIDGES
ENGINEERED AND FABRICATED
TO YOUR SPECIFIC
REQUIREMENTS. CLEAR SPANS
TO 220 FEET AVAILABLE IN MOST
OF OUR STYLES. FACTORY
DIRECT.

1-800-749-7515

10' 6" X 250' CONNECTOR SERIES
ADMIRALS COVE • JUPITER, FL

CIRCLE #188

112	American Cyanamid	42-43
127	American Cyanamid*	56
155	The Andersons	39
128	Aquatrols	69
151	BASF	29
104	Bayer Corporation	40-41
105	Bayer Corporation	50-51
170	Bearcom	76
149	Becker Underwood	72
171	Bird-X	76
150	Brouwer Turf Equip.	37
129	Club Car	4
173	Continental Bridge	77
106	Dow AgroSciences	8-9
—	E.F. Burlingham & Sons	33
116	E-Z-GO	80
174	EcoTurf, Inc.	76
175	Enwood Structures	77
176	Excel Bridge Mfg.	76
162	First Products	72
120	Flowtronex PSI	3
107	FMAC Golf Finance Group	22-23
161	Forestry Suppliers	78
163	Formost Construction Co.	74
177	GCSinc./Golf Course Solutions	77
164	Golf Resource Agency Inc.	74
178	Grass Craft	76
165	Great Lakes Containment	74
179	Harrington/Harco Corporation	76
156	Howard Johnsons	55
157	Howard Johnsons	57
158	Howard Johnsons	59
123	Hydro Agri North America, Inc.	36
—	ISK Biosciences Corp.	5
102	Jacobsen	18-19
180	Jesco Products/Pinhigh	77
108	John Deere	6-7
181	JPF Distributors	77
182	Kirby Markers	77
124	Lebanon Turf Products	10
159	Martin Marietta Magnesia Specialties	73
183	Master of the Links	76
147	National Mower	21
—	NOVARTIS	13
—	NOVARTIS	14-15
130	Nutramax	68
190	Oregon Fine Fescue	16
146	Par Aide	5
169	Partac Peat	78
152	PBI/Gordon Corporation	57
184	Precision Small Engine	76
185	Precision Small Engine	77
124	Premier Environmental Products	58
131	Prolink	52
103	Pursell Industries	24-25
186	Quail Valley Farms	77
109	Ransomes, Ransomes Corporation	34-35
148	Redexim Charterhouse	55
132	Regal Chemical	20
133	Regal Chemical	53
110	Rhone-Poulenc	46-47
113	Rhone-Poulenc	62-63
114	Rhone-Poulenc*	30-31
—	RISE	30-31*
168	RJ Advantage	78
—	Rohm & Haas	17
134	Roots, Inc.	54
187	Ryan Inc. Central	76
135	Smithco	33
136	Smithco	67
121	Southern Golf Products	65
—	Standard Golf	21
188	Steadfast Bridge Co.	77
117	Syncroflo*	79
118	Tee-2-Green	2
125	Terra Industries	28
—	Terra Industries	37
189	TerraGraphics Environmental Engineers	76
137	Toro BioPro	32
138	Toro Comm'l. Prod. Div.	11
139	Toro Comm'l. Prod. Div.	48
140	Toro-Irrigation Div.	64
141	Turf Diagnostics and Design	70
166	Turf Drain, Inc.	72
153	Turfcro, Inc.	59
142	Ty-Crop	44
143	Valent*	38
154	Wilbur-Ellis	73
167	York Bridge Concepts	74
144	Zeneca Professional Products	60
111	Zeneca Professional Products	26-27
145	Zeneca Professional Products	66

Appears in regional editions.