

Toro unveils latest triplex trim mower

BLOOMINGTON, Minn. — The Toro Co. introduced an innovative new trim mower during the recent Golf Course Superintendents Association of America International Conference and Show.

The new Reelmaster triplex trim mower has a comfortable design, Toro-patented traction system and shifting reels that

are significant improvements over many reel-trim mowers.

"With this product we want to offer superintendents a next generation of triplex trim mowers," said John Wright, Toro's golf marketing manager for equipment. "It is a product that performs better in the grass, is easier to operate and is also

easier to service. By putting the operator in front and the engine in the rear, we significantly improved operator comfort and ease of use, while dramatically improving service access."

To improve trim mower performance while cutting grass, Toro has developed two innovative features. The first innovation is Toro's patented Series/Parallel three-wheel-drive traction system,

which provides power to at least two wheels at all times. "The Series/Parallel system provides superior traction on hillsides and in wet turf, improving climbing capabilities and minimizing the turf damage that occurs when a tire spins," Wright said.

The second innovation is the ability to shift all three cutting units side-to-side, a total of 24 inches, while cutting grass. "For

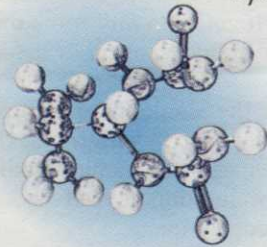
many years, customers have told us that they needed more overhang on their trim mowers for mowing around bunkers and other obstacles," Wright said. "The ability to shift the reels greatly increases overhang on each side, and it also allows the operator to shift the tire tracks within the cut swath."

For more information, contact Toro at 612-888-8801.

CIRCLE #201

THIS PART OF THE AD IS DEDICATED TO THOSE OF YOU IN SEARCH OF A GREAT HYDROLYSIS-ACTIVATED HOMOGENEOUS FERTILIZER.

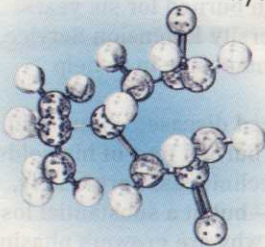
IsoTek³¹ homogeneous fertilizers release the world's most preferred nitrogen source — isobutylidene diurea — and employ the twin mechanisms of *hydrolysis and microbial activity*



making them perfect for superior turf in every geography, regardless of soil type or condition.

THIS PART OF THE AD IS DEDICATED TO THOSE OF YOU IN SEARCH OF A GREAT MICROBIAL-ACTIVATED HOMOGENEOUS FERTILIZER.

IsoTek³¹ homogeneous fertilizers release the world's most preferred nitrogen source — isobutylidene diurea — and employ the twin mechanisms of *hydrolysis and microbial activity*



making them perfect for superior turf in every geography, regardless of soil type or condition.

THIS PART OF THE AD IS DEDICATED TO THOSE OF YOU WITH NO IDEA WHAT THE HECK YOU'RE IN SEARCH OF.

For more information on the one-and-only IsoTek³¹ homogeneous twin-mechanism release fertilizer with isobutylidene diurea, contact your local Lebanon Turf Products Distributor, or call 1-800-233-0628.



IsoTek³¹
We've Got Green Down To A Science.

Ransomes adds to Greensplex II

LINCOLN, Neb. — The new Ransomes Greensplex II triplex greens mower contains many design features for enhanced performance, productivity and ease of service. The mower is the newest version of the Ransomes Greensplex 160.

A patented center reel conveniently pivots out from under the Greensplex II for easy servicing. The center reel also has an automatic time delay to prevent accidental cutting into the collar of the green. Other major product enhancements to the Greensplex II include:

- A patented stabilizer linkage leveling the cutting units parallel to the ground during raising and lowering to help ensure an even cut and smooth finish over undulating terrain. Additionally, it eliminates bouncing of the cutting heads during transport.

- "Tandem" hydrostatic and reel pumps are directly driven from the engine. The reliable new pumps eliminate the need for belts and pulleys, greatly diminishing noise, vibration and maintenance.

- Two new engine choices, both of which help reduce the overall weight of the mower, are available: an 18-hp, gas-powered Kohler air-cooled unit, or a 18.8-hp diesel Kubota D722, liquid-cooled engine. Both engine models meet CARB regulations for emissions.

- Dependable electric solenoid valves in the hydraulic system eliminate the need to lubricate linkages. The valves also reduce the number of parts and help cut down on the amount of time normally spent servicing a hydraulic system.

The 22-inch steerable floating cutting heads provide a total cutting width of 62 inches. The interchangeable reels, which are available in seven-, nine- or 11-blade configurations, can cut at heights from 0.1-inch up to 0.62-inch — or to 0.078-inch with an optional tournament bedknife. Mowing speed can be adjusted to ensure a consistent clip rate and cutting height.

For more information contact Ransomes America Corp., P.O. Box 82409, Lincoln, NE 68501; telephone 800-228-4444.

CIRCLE #202

Bacteria system treats ponds

NORTHBROOK, Ill. — The Cycle System is a new concept in pond management, utilizing super-concentrated formulations of enzymes and bacteria to correct specific aquatic problems. The Cycle System was scientifically formulated to remove algae-supporting nutrients and excessive sludge buildup. This easy-to-use system packs a powerful one-two punch consisting of two separate, but complementary, products: Spectrum and Devour. The Cycle System is a cost-effective biological tool for long-term improvements in lakes and ponds.

Both Spectrum and Devour contain specialized bacterial strains plus prepackaged biostimulants that work as power packs to enhance enzyme growth and cell reproduction. Together these products provide a pond management program using 100 percent natural ingredients that require no special handling, storage or use permits.

Spectrum pre-emptively digests excess nitrogen and phosphorus in the water column, quickly eliminating the algae's primary food source.

Dead algae from pesticide treatments, fish and fowl waste and fallen leaves are all sources of sludge accumulation on pond and lake bottoms. Left untreated, sludge will re-release nitrogen and phosphorus into the water, feeding the next algae bloom. This also can cause offensive hydrogen sulfide odors and murky water. Devour accelerates the decomposition of sludge and other partially decomposed

material by consuming organic compounds in the sludge layer.

Spectrum and Devour are packaged in 1/2-pound, water-soluble packets and are used at rates of 3 to 6 pounds per surface acre initially, followed by a maintenance treatment or 1.5 to 2 pounds per surface acre every two weeks.

CIRCLE #203



Del Mar CC, California

Standard's new flagsticks more visible

Standard Golf Co., a leading manufacturer of golf course accessories and maintenance equipment, has introduced the new FireStik line of flag sticks.

Custom-crafted with a highly reflective coating, the stripes on the FireStik reflect sunlight to enhance visibility and lend a unique flair to the course. Designed to meet the same standards of quality and durability of all Standard

Golf flag sticks, the FireStik's unique 7-1/2-foot height helps provide a clear view of the hole placement. The FireStik is available in several color combinations.

For more information on the new range of FireStik flag sticks, contact Standard Golf Co., P.O. Box 68, Cedar Falls, Iowa 50613-0068; telephone 319-266-2638.

CIRCLE #204

More and more architects, agronomists, and superintendents are saying:

It's Fine with me!



The Misquamicut Club, Rhode Island



Widow's Walk GC, Massachusetts

Fine fescue is the golf course grass of the past, present, and future

Fine fescues are a great part of golf history — since the Scottish Links of olden times were carved from fescue covered dunes.

Now, what has become fashion is simply retracing the roots of golf. Whether adding excitement to bunkering, grassing around wetlands and wooded areas, or creating low maintenance roughs; fine fescue is the choice of savvy architects, designers, and superintendents.

Oregon grown Chewings and creeping red fescues will add shade tolerance and low maintenance to Kentucky bluegrass and perennial ryegrass mixtures.

So, no matter where you use it or how you cut it, fine fescue is making history — *again!*

Golf Car

Continued from page 53

Fairway asserts the Single-Rider can improve pace of play by an average of about 25 percent, which means the average round drops from 4-1/2 to 5 hours to approximately 3 1/2 to 3 3/4 hours.

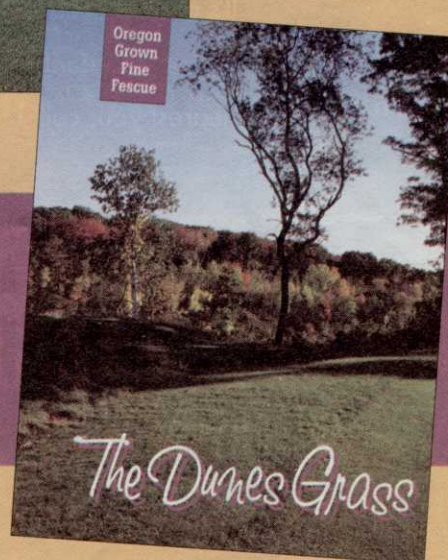
"If you can go from 7- to 8-minute tee times to six-minute tee times, that is an unprecedented capacity that the golf industry has never seen before using golf cars," added Perez, "because that is eight more players than they can currently run right now under an excellent, best-case scenario every hour."

Charlie Stine, editor of *Florida Golf*, who tried out four of the cars on his home course at Sea Air Country Club, feels single-person golf cars offer two main advantages: speeding up pace of play and putting down less weight on turf.

"I'm not necessarily advocating this brand," said Stein, "but this is the best single-rider car I've seen by far."

Free Brochure

Write or call today for your copy of the new *Oregon Fine Fescue: The Dunes Grass* brochure with photos and management tips.



Oregon Fine Fescue Commission

1193 Royvonne Avenue S
Suite 11
Salem, OR 97302
503-585-1157