



Mature trees characterize the new Reynolds National course at Reynolds Plantation.

## Reynolds Pkt. opens 3rd course

GREENSBORO, Ga. — Reynolds National, the Tom Fazio-designed layout now open for play at Reynolds Plantation, has added a third golf course to the 4,800-acre residential community located on Lake Oconee, between Atlanta and Augusta.

The course is open to guests staying at Reynolds Plantation, as well as members of the Reynolds National Golf Club.

A 7,015-yard, par-72 test from the back tees, Reynolds National features two holes directly on Lake Oconee, a 19,000-acre lake that is the second largest in Georgia. The site, with dense forests of hardwoods, pines, flowering wild dogwoods and some of Lake Oconee's most dramatic lakefront topography, provided the canvas for Fazio.

At the par-5 6th, a two-tiered green is guarded on three sides by water, with only a narrow ramp left open in front to

accept low, running shots — should any player dare to try that route.

The par-5 8th hole, playing from an elevated tee that affords a view of the entire hole, measures 499 yards from the back markers, inviting players to try to reach the green in two shots. But large bunkers in the landing area await less-than-accurate tee shots.

Four sets of tees have been designed into the Reynolds National layout, marking the course at 5,292, 6,056 and 6,536 yards, in addition to its 7,015 championship yardage. The course also features a 10-acre practice facility.

Reynolds National joins two award-winning courses already in play — the Plantation Course, designed by Bob Cupp in conjunction with touring professionals Fuzzy Zoeller and Hubert Green, and Great Waters, designed by Jack Nicklaus.

## Hills-designed Half Moon Bay lies on the edge

HALF MOON BAY, Calif. — Natural landforms and the Pacific Ocean form the backdrop for the Ocean Course, an Arthur Hills-designed layout which opened at Half Moon Bay Golf Links here Sept. 5.

A true links layout, the Ocean Course underscores the riparian areas and native grasses along the Northern California coastal bluffs. With prevailing ocean breezes, tight fairways and knolls, the course offers a challenging test for golfers.

The award-winning Links Course, the existing track at Half Moon Bay Golf Course Links, was designed by Francis Duane in consultation with Arnold Palmer in 1974. The 18th hole has been named one of the top 100 holes in America and the Links Course is one of the top-rated public courses in the Bay Area.

On his first course design in Northern California, Hills designed each hole of the par-72, 6,700-yard Ocean Course to possess an ocean view.

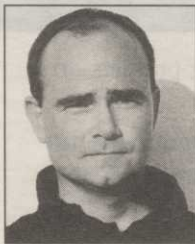
"The beautiful landforms and the ocean have created an ideal setting for this course," said Hills. "As the famed planner and park designer Daniel Burnham said, 'The greater works by God, the lesser by man.'"

One of the course's signature holes is

the 186-yard par-3 17th, which hangs on the edge of a cliff. Crashing waves of the Pacific Ocean below provide an accompaniment to a hole with no fairway, simply a tee and a green.

### CURLEY BUYS LANDMARK DESIGN DIVISION

SCOTTSDALE, Ariz. — Brian Curley, former director of golf course design for Landmark Golf Co., has signed a buy-out agreement with the firm to purchase its Design Division. Curley has 20 years experience in golf, 11 in design with Landmark, where he worked extensively with Pete Dye and Lee Schmidt. He recently collaborated with Fred Couples on The Plantation, a private club in Indio, Calif.,



Brian Curley

and assisted Dye on two Las Vegas Paiute Resort courses, including No. 3 which will open late this year.

He is working with Couples on The Palms, adjacent to PGA West.

Long-time Curley associate Grant Haserot will work with him.

## Hale Irwin buys back design firm

Senior Tour Player and three-time U.S. Open Champion Hale Irwin has repurchased Hale Irwin Golf Services, Inc. (HIGSI) from Brassie Golf Corp.

Irwin had sold HIGSI to Brassie in a stock exchange on May 16, 1994, and entered into an employment contract to operate Hale Irwin Golf Design as president. The terms of the agreement were for three years and were governed by Brassie. The contract naturally expired May 15.

Irwin decided not to renew his contract

with Brassie. He will continue the operations of HIGSI and Hale Irwin Golf Design. Hale Irwin Golf Design will retain all the existing design staff. Terry Anton will continue to be in charge of business development, while Stan Gentry is lead golf course architect, and Bryce Swanson is design associate.

Contracts require additional hiring soon. Offices will remain in St. Louis and Tampa, Fla., with a third office to be opened in Phoenix by the summer of 1998.

As Rakes Go...  
This One's a Real

**BunkerPro™**

(Patent Pending)

### Check Out These Benefits

- A splinter resistant handle made from wrapped fiberglass with a reinforced honeycomb core.
- A dynamic, 3-D shape for highly efficient smoothing.
- A Dual-sided head design — tines, for smoothing, on one side... a flat blade on the other side, for moving lots of sand. A full 15" wide.
- A Lightweight, two-piece, sonic welded head — made from super-tough, nylon filled plastic.
- Easy to attach handle with a comfortable rubber hand grip.
- The extra long, and extra strong, 54" handle means "Genuine Par Aide Value" is affordable for every bunker.



Wherever  
Golf is Played

Makes Any Golfer a "Bunker Pro"

Call 1-888-893-2433

for the name of the Dealer nearest you.

3565 Hoffman Rd. East • St. Paul, MN 55110  
www.paraide.com • e-mail to info@paraide.com