

6-7 — GCSAA Seminar on Writing Successfully for Business and Publications in Somerset, N.J. *

10 — GCSAA Seminar on Employee Safety Training in Rhinelander, Wis. *

11-12 — GCSAA Seminar on Golf Greens: History, Theory, Construction and Maintenance in Wichita, Kansas. *

11 — GCSAA Seminar on Maximizing Turfgrass Disease Control in Lexington, Ky. *

11 — GCSAA Seminar on Options and Their Application in Pest Management in Industry, Calif. *

11 — GCSAA Seminar on Wetlands and Golf Courses in Novi, Mich. *

13-14 — GCSAA Seminar on Managing People for Peak Performance and Job Satisfaction. *

15-18 — Associated Landscape Contractors of America Landscape and Grounds Maintenance Conference and Green Industry Expo in Charlotte, N.C. Contact Elise Lindsey at 703-736-9666.

16-19 — Canada's First International Golf Business Conference in Barrie, Ontario. Contact 705-325-2740 ext. 3075.

17 — UMass Extension Biological Control Conference in Amherst, Mass. Contact Mary Owen at 508-892-0382.

17-18 — GCSAA Seminar on Plant Nutrition and Fertilizers in New Seabury, Mass. *

18 — GCSAA Seminar on Advanced Weed Management in Myrtle Beach, S.C. *

18-19 — GCSAA Seminar on Golf Greens: History, Theory, Construction and Maintenance in Garden City, N.Y. *

18 — GCSAA Seminar on Human Resource Management in Myrtle Beach, S.C. *

18 — GCSAA Seminar on Irrigation System Operation and Principles of Design in Myrtle Beach, S.C. *

18 — GCSAA Seminar on Lake and Aquatic Plant Management in San Marcos, Calif. *

20 — GCSAA Seminar on Employee Safety Training in New Rochelle, N.Y. *

20-21 — GCSAA Seminar on Managing People for Peak Performance and Job Satisfaction. *

21 — GCSAA Seminar on Irrigation System Operation and Principles of Design. *

December

2-3 — GCSAA Seminar on The Assistant Superintendent: Managing People and Jobs in Lincoln, Neb. *

3-4 — GCSAA Seminar on Managing People for Peak Performance and Job Satisfaction in Elicott City, Md. *

4 — GCSAA Seminar on Improving Your Negotiating Skills in Jacksonville, Fla. *

5 — GCSAA Seminar on Human Resource Management in Des Moines, Iowa. *

5 — GCSAA Seminar on Irrigation Water Quality in Sacramento, Calif. *

8 — GCSAA Seminar on Integrated Disease Management for Bermudagrass Golf Courses in Slidell, La. *

8-9 — GCSAA Seminar on Managing People for Peak Performance and Job Satisfaction. in Albuquerque, N.M. *

8 — GCSAA Seminar on Maximizing Teamwork in Atlantic City, N.J. *

9-10 — GCSAA Seminar on Managerial Productivity in Milwaukee. *

9-11 — New Jersey Turfgrass & Landscape Expo in Atlantic City, N.J. Contact Richard Caton at 908-821-7134.

9-11 — Georgia Turfgrass Conference and Show in College Park. Contact Doug Moody at 770-975-4123.

11 — Massachusetts Recreation and Park Association State Conference in Sturbridge. Contact Carol Kilcoyne at 508-650-1126.

15-17 — Texas Turfgrass Conference and Trade Show in San Antonio.

16 — GCSAA Seminar on Employee Safety Training in Oklahoma City. *

FROM THE COVER

Stormwater runoff

Continued from page 1

Commissioners, were created in part to help pay the costs of capital improvements to the county's stormwater system. But many courses began receiving annual stormwater bills that increased anywhere from seven to 20 times. Foxfire Golf Club, a privately-owned 27-hole daily-fee facility, paid \$5,466 in assessments in 1993 but saw its bill jump to \$37,840 in 1995. Municipal golf courses are exempt from the assessments.

The Suncoast Golf Courses Association recently won a concession from the county in the ongoing struggle. The county agreed to reduce the annual assessment rate for 1997-98 from .148 to .037, a 75-percent reduction that will mean a combined \$250,000 reduction in the amount paid by the courses. But Linda Talbot, vice-president and manager of the Foxfire Golf Club and president of the Suncoast Golf Courses Association, said the .037 rate is still too high. The association would like to see the rate go down to at least .0257, a difference that represents thousands of dollars.

"It's still a slap in the face as far as I'm concerned," said Talbot. "It's outrageous. The figures they are getting are so out of whack compared with what agriculture is paying. They're paying 10 percent less than we are. We still have to continue the fight. We're sod farmers in the purest sense of the word ... We're being penalized because we allow people to play on the surface we cultivate."

Talbot said the county's assessment rate, even the recently reduced one, is "not based on scientific facts ... it was a politically expedient thing for them to do to send off the litigation..." She also criticized some of the standards used by the county to develop the rate level for golf courses. She said cart paths are factored in, for example, as if they were large-scale parking lots. In developing its original rate, the county also stated that it assumed golf courses irrigated at least 3.5 inches a week and that agricultural concerns did not irrigate, both of which proved to be untrue.

J. P. Marchand, the deputy director of transportation for Sarasota County who oversees the county's stormwater program, said the new, reduced rate for golf courses was the result of using more sophisticated methodology. He said it recognizes that golf courses do not contribute as much runoff as a neighborhood lawn.

"I think our initial rate was fair," said Marchand, the former manager of the stormwater program, "but maybe you could say the new rate is 'more fair.' As we move on we may make even more refinements... Maybe we could have gotten to this step sooner... but we've made some adjustments and some modifications."

Golf courses and government bodies in several other counties in Florida have been watching the Sarasota stormwater assessment controversy with great interest. Stormwater runoff assessments, like fire and rescue, are what are known as non-ad valorem and are assessed against individual property owners according to the benefits to that particular property.

In Florida, except for certain charter counties, non-ad valorem assessments like the stormwater runoff one may be made by the county without a public vote, which is what happened in Sarasota. The concern of golf courses across the state is that Sarasota County's treatment of privately-owned golf courses could become a pattern in other counties.

Talbot said even though her group's legal costs are rising, they will continue to fight the county, and if necessary, help golf course owners in other counties. Don Hemke, an attorney with the firm of Carlton Fields in Tampa, has been representing the golf course owners group since January. "I think we have a challenge and obligation to educate the County Board of Commissioners," said Talbot, "to educate politicians about what we do, and how well we do it, how much oxygen we supply, how much nature we support and how careful we are with the chemicals we do use."

Golf Course Marketplace

To reserve space in this section, call Jean Andrews, 207-846-0600

EXCEL BRIDGE MANUFACTURING CO.

Specializing in golf course/ park/ bike trail bridges and using a variety of materials to suit your particular landscape needs, we fabricate easy-to-install, pre-engineered spans and deliver them anywhere in North America.



The Macho Combo: Combines the beauty of wood and the strength of maintenance free self-weathering steel. Bridge designed by Golf Dimensions.

800-548-0054
(outside California)

12001 Shoemaker Avenue, Santa Fe Springs, CA 90670
Tel: 562-944-0701 Fax: 562-944-4025

CIRCLE #141

Ball Washer Refurbishment

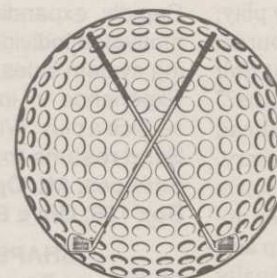
- **Ball washers, benches, tee markers, etc. restored to like new condition for a fraction of the cost of new.**
- **Saves money over in house refurbishment.**
- **Reduces time demands on staff as GCSinc. manages the process from disassembly through re-assembly.**
- **Includes; sandblasting, welding & powder coating.**
- **Service Nationwide... Representative Inquires Welcome.**

Golf Course Solutions 714-427-5400 (fax) 5411
2127 S. Grand Ave., Santa Ana, CA 92705

CIRCLE #143

Formost Construction Co.

Sewing the nation for over 30 years.



Golf Course Builders

"Doing One Thing Well"

P.O. BOX 559
TEMECULA, CALIFORNIA 92593

(909) 698-7270

FAX (909) 698-6170

STATE LIC. #267960

CIRCLE #142

P.O. Box 806
119 40th St. NE



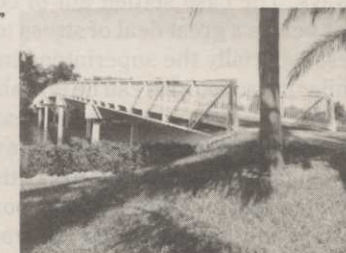
Fort Payne, AL
35967

"DELIVERED ACROSS AMERICA"

PEDESTRIAN AND SINGLE LANE VEHICULAR BRIDGES ENGINEERED AND FABRICATED TO YOUR SPECIFIC REQUIREMENTS. CLEAR SPANS TO 220 FEET AVAILABLE IN MOST OF OUR STYLES. FACTORY DIRECT.



1-800-749-7515



10' 6" X 250' CONNECTOR SERIES ADMIRALS COVE • JUPITER, FL

CIRCLE #148

Golf Course Marketplace

To reserve space in this section, call
Jean Andrews, 207-846-0600

105	American Cyanamid	14-15
131	The Andersons	46
133	Aqua Gen	38
102	Bayer Corporation	24-25
132	Contech Construction Products	41
139	Continental Bridge	45
134	Crystalyn Corp.	46
115	DTN Weather Center	30
106	E-Z-GO	47
140	Enwood Structures	45
141	Excel Bridge Mfg.	44
135	First Products	38
112	Flowtronex PSI	9
107	FMAC Golf Finance Group	16
142	Formost Construction Co.	44
143	GCSinc./Golf Course Solutions	44
108	Golf Asia '98	18
116	Griffin Industries/Nature Safe	21
144	Harrington/Harco Corporation	45
117	Hydro Agri North America, Inc.	32
101	Jacobsen	10-11
103	John Deere	4-5
120	Lofts, Inc.	26
145	Master of the Links	45
—	NOVARTIS	13
—	NOVARTIS	21
121	Nutramax	34
128	Par Aide	27
136	Paragon Construction	38
138	Partac Peat	41
109	PGA of America	12
122	Prolink	33
146	Quail Valley Farms	45
—	RISE	6-7
104	Rohmid LLC*	6-7
129	Roots, Inc.	31
123	Rotondo Precast	37
147	Ryan Inc. Central	45
150	Seed Research of Oregon	48
124	Smithco	19
113	Southern Golf Products	17
125	Standard Golf	3
148	Steadfast Bridge Co.	44
110	Syncroflo*	22
111	Tee-2-Green	2
130	Tempest Controls	41
118	Terra Industries	20
119	Terra Industries	28
149	Trims International Software	45
127	Turf Diagnostics and Design	29
137	York Bridge Concepts	38

*Appears in regional editions.

HARCO DUCTILE IRON FITTINGS FOR GOLF COURSE IRRIGATION SYSTEMS

Sizes 2" through 12", all configurations including "knock-on" repair couplings. High Strength, high corrosion resistance.



The Harrington Corporation
P.O. Box 10335
Lynchburg, Va 24506
804-845-7094 Fax 845-8562

CIRCLE #144



Golf Course Bridges!

1-800-328-2047



Route 5, Box 178, Alexandria, MN 56308 • (612) 852-7500

Thousands in use. Built to last.

Sponsor Member



B-DA-CL

CIRCLE #139

Inside Info

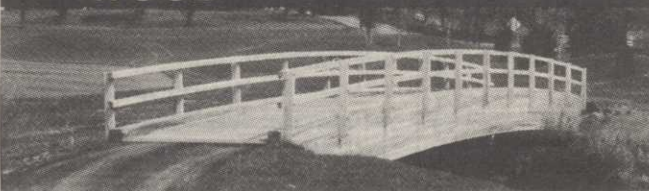
Get the jump on your competition by subscribing to the *Golf Course News Development Letter*

This twice-monthly newsletter...

- tracks golf course projects under consideration across the nation
- is packed with news items detailing where and when projects will be undertaken, and by whom
- is just \$225 for a year's subscription

For more information contact Editor Peter Blais at 207/846-0600

LAMINATED WOOD BRIDGES



PEDESTRIAN & VEHICULAR

Order Direct From The Leading Manufacturer in U.S.

- Complete Prefabricated Packages
- Ready for Fast Erection
- Direct Distribution Throughout the U.S.
- Custom Design & Engineering



CALL 800-777-8648

P.O. Box A • Morrisville, NC 27560
Tel. 919/467-6155 • FAX 919/469-2536

CIRCLE #140

Simplify Course Management Today For a Brighter Tomorrow

Discover how TRIMS Grounds Management Software® out performs and outlasts all other software around the world. TRIMS helps you to easily organize, track, report and manage people, equipment, chemicals, expenses and time.

Choose TRIMS...It's That Simple!

Discover **TRIMS⁹⁷** For Yourself

Come See Us At GCSAA Booth #555

Contact us today for a FREE Demo Disk
TRIMS Software International, Inc.

3110 North 19th Avenue, #190 • Phoenix, AZ 85015 U.S.A.
(800) 608-7467 • (602) 277-0067 • Fax (602) 277-8029 • www.trims.com

CIRCLE #149

Keep Your Divot Seed Mixture Where It Is Used ...



... in Divot Seed & Soil tee buckets next to the tee markers. Available in Cedar or Redwood slats and with companion Trash'M debris buckets.



Ask Your Golf Course Distributor for INNOVATIVE MAINTENANCE PRODUCTS

From

Master of the Links

P.O. Box 1865, Lombard, IL 60148-1865
(630) 627-1100 • Fax (630) 627-1104



CIRCLE #145

You'll want to play barefoot on our certified grasses.

Featuring

- Tifton 419
- Midlawn
- El Toro Zoysia
- Meyer Z-52 Zoysia

- Sprig Planting Service
- Laying Machinery
- Accessory Rentals
- Row Planting Service

- Lay and Play Fairway Cuts (warm season)
- Pads
- Big Rolls



Quail Valley Farms

Certified and Registered Grasses

Sports, Commercial and Residential Sod Producers

CIRCLE #146