

Thomas on design

Continued from page 14

a trick taught to him by Willie Tuckie Jr. concerning laying out a golf course on a contour map. In Thomas' words: "Your map is, of course, contoured to scale, and you cut out of blotting paper miniature fairways, making them also to the same scale as the map; it is easy to place them on your contour map with thumb tacks, first having your map on a board. You will find that by hinging these little fairways at or about the 200-yard mark, you can make them follow the contours on the map as doglegs or straight holes.

"You can play with them just as if they were picture puzzle units; and by making them of different lengths, all to scale, with their width corresponding to that of fairways from 65 to 80 yards wide, the one shotters unhinged and the three-shot holes hinged twice, you

will find them of the utmost help."

Read this and you have to love Thomas. Was he prophetic? Hear this: "It is most important for the future of golf in this country that every aid should be given to the building and upkeep of municipal courses, because such will eventually become of the greatest value to the game, and from them we may expect to produce many of our future great players."

Was he a rule-breaker? "To my mind, five one-shotters [par-3s on one course] are not too many. Certainly, a fine test of this type is superior to a poor two-shotter, and, in addition, they usually surpass the two-shotters in character, because ground for them is easily found, and they may be made with less trouble and expense..."

"Furthermore, by saving ground in the use of one shotters, it is easier to secure better two shotters on the balance of a course, and in badly broken country they help the problem of plan."

Was he walled in by tradition or grandeur? "It is possible to make a very short nine-hole approach and pitch course, where the holes will average around 30 yards, all of which will require most skillful playing to secure the average par of 3; and I know of several layouts of this character in crowded districts, which are very interesting and attractive. It would seem that such short pitch-and-approach courses could be easily installed at many clubs, at hotels, and even for private grounds, and give the utmost pleasure, as well as fine practice, for the short game."

Was he humble? Speaking of the concentration of municipal golfers ("There was no nonsense as 'Please move your shadow off the line of my putt,' or 'Stand still, caddie, while I play this shot'), he said: "I admired those golfers; I realized they were far above me as sportsmen and golfers."

Here are some thoughts on:

• Nature vs. man: "...the truly Ideal

course must have natural hazards on a large scale for superlative golf. The puny strivings of the architect do not quench our thirst for the ultimate..."

• Walking: "Broadly speaking, where it is necessary to climb more than two steep hills and more than four medium grades, the course is approaching impracticability..."

• The sun. "The tract to be purchased must have a clubhouse site where several finishing holes on both nines of an eighteen hole course have the sun at their back. The thirty-six hole layout must also finish away from the setting sun. By noting possibilities for the clubhouse site the avoidance of sun holes as finishes is a simple one."

• Art and utility: "In golf construction art and utility meet; both are absolutely vital; one is utterly ruined without the other... If you fail in either, your course is without true merit."



CALENDAR

May

5-7 — 51st Annual Southeastern Turfgrass Conference in Tifton, Ga. Contact Dr. Wayne Hanna at 912-386-3360.

16 — Golf Environments of the 21st Century: Integrating Wildlife Conservation and Golf Courses, a conference coordinated by the U.S. Golf Association and National Fish and Wildlife Foundation at National Geographic Society Headquarters, Gilbert H. Grosvenor Auditorium, 1145 17th St., N.W., Washington, D.C. Contact Dr. Kimberly Erusha, USGA, Golf House, P.O. Box 708, Far Hills, N.J. 07931; 908-234-2300.

12-18 — American Society of Golf Course Architects Annual Meeting in Toronto. Contact 312-372-7090.

June

13-15 — Medfest '97 in Post Falls, Idaho. Contact Brandie Beebe at 800-568-8873.

18 — SUNY Cobleskill's Turfgrass and Landscape Workshop in Cobleskill, N.Y. Contact Robert Emmons at 518-234-5644.

27 — Turf-Seed Inc. Field Day 15 in Rolesville, N.C. Contact Melodee Fraser at 919-556-0146.

July

29 — Midwest Regional Turf Field Day in West Lafayette, Ind. Contact Midwest Regional Turf Foundation at 317-494-8039.

August

19 — Cornell Field Day in Ithaca, N.Y. Contact Frank Rossi at 607-255-1629.

September

4-5 — Southwest Horticultural Trade Show in Phoenix.

October

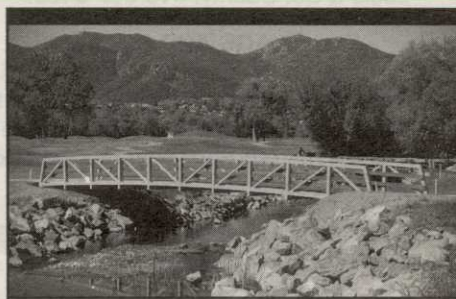
26-28 — Public Golf Forum in Oak Brook, Ill. Contact Golf Course News Conference Group at 207-846-0600.

November

2-4 — 18th Annual Irrigation Association International Exposition and Technical Conference in Nashville, Tenn.

Golf Course Marketplace

To reserve space in this section, call 207-846-0600 ext. 264



Carlton Oaks Country Club, Santee, CA 10' wide x 60' long, 10,000 lb. capacity

EXCEL

BRIDGE MANUFACTURING CO.

Golf Course Bridges are our specialty! We fabricate easy-to-install, pre-engineered spans and deliver them anywhere in the USA. Call today for a free consultation.

Our classic design, with a look that stands the test of time.

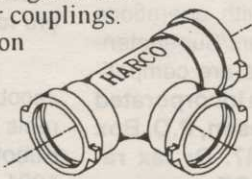
800/548-0054 (Outside CA)

12001 SHOEMAKER AVENUE, SANTE FE SPRINGS, CA 90670
310/944-0701 • FAX 310/944-4025

CIRCLE #160

HARCO DUCTILE IRON FITTINGS FOR GOLF COURSE IRRIGATION SYSTEMS

Sizes 2" through 12", all configurations including "knock-on" repair couplings. High Strength, high corrosion resistance.



The Harrington Corporation
P.O. Box 10335
Lynchburg, Va 24506
804-845-7094 Fax 845-8562

CIRCLE #162

DIRTY BIRDS a PROBLEM??

Scare them away with harmless, APPROVED, ENVIRONMENTALLY SAFE BIRD CONTROL NOISEMAKERS

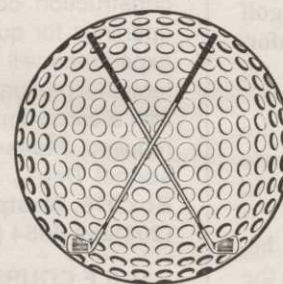
UNIQUE, MORE DISCREET PRODUCTS ESPECIALLY FOR GOLF COURSES near residential areas are available.

We CAN help solve your bird problems.
CALL TODAY: 1-800-582-8843
JPF Distributors

CIRCLE #164

Formost Construction Co.

Serving the nation for over 30 years.



Golf Course Builders

"Doing One Thing Well"

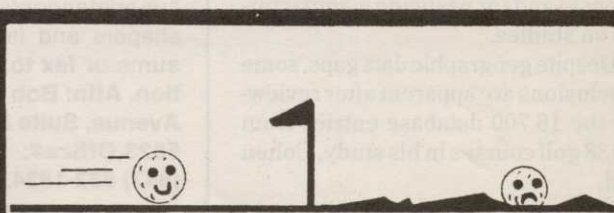
P.O. BOX 559
TEMECULA, CALIFORNIA 92593

(909) 698-7270

FAX (909) 698-6170

STATE LIC. #267960

CIRCLE #161



This is a TRUE-SURFACE® Green.

This ain't.

1-800-443-8506

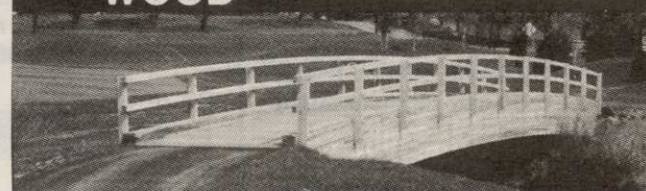
TRUE-SURFACE®

Vibratory Greens Rolling System

U.S. Patent 5,291,219

CIRCLE #163

LAMINATED WOOD BRIDGES



PEDESTRIAN & VEHICULAR
Order Direct From The Leading Manufacturer in U.S.

• Complete Prefabricated Packages • Ready for Fast Erection
• Direct Distribution Throughout the U.S. • Custom Design & Engineering



CALL 800-777-8648

P.O. Box A • Morrisville, NC 27560
Tel. 919/467-6155 • FAX 919/469-2536

CIRCLE #165

Water research shows positive results for courses

Continued from page 67

Of 906 database entries for surface water, nitrate was found in 706 instances at an average concentration of 0.5 ppm.

Further, in ground-water monitoring for pesticides, Cohen said researchers found 160 detections in 12,214 data entries. "The typical detection limit," he said, is 1 part per billion (ppb), while some detection limits were at 1/10th ppb. Nine of the detections exceeded HALs or MCLs.

"We have wells next to tees. We have tests from drains under greens. These are not drinking-water wells in bedrock," Cohen pointed out.

Surface-water monitoring discovered that in 2,731 entries, pesticide

levels exceeded MCLs or HALs five times, or 0.02 percent. Nineteen of the entries (0.7 percent) exceeded aquatic MACs (Maximum Allowable Concentrations for aquatic organisms). The average concentration was 0.07 to 6.8 ppb, Cohen said, depending on how non-detections were counted.

The most frequently detected chemicals in ground water were 2,4-D, fenamiphos/f. sulfoxide (found in Namacur) and arsenic, he said. Atrazine, fenamiphos, diazinon and 2,4-D were the most-often detected chemicals in surface water.

The 2,4-D levels are not a concern because, although it is very mobile, it has a very short half-life and con-

centrations are usually very low, Cohen said. "And, in some cases, it may not have been from golf course use. In two places where it was detected those courses do not even use 2,4-D. And it can easily be misidentified by labs."

Saying the current study is based mostly on worst-case locations for wells and other test areas, he said, "One could infer that similar golf course studies would indicate a significantly reduced impact relative to agriculture."

Cohen intends to make his recommendations to the GCSAA and publish his findings in a peer-reviewed journal as well as in the GCSAA's *Golf Course Management*.

Cir.#	Advertiser	Page
133	AgrEvo	49
112	AgrEvo	21
116	Agro-Tech 2000	28
109	American Cyanamid	16
141	American Cyanamid*	63
143	Ametek	66
128	The Andersons	42
145	Aqua Control, Inc.	70
111	AquaMaster	20
132	Aquatrols	48
124	Bayer Corporation	36-37
142	Club Car	64
171	Continental Bridge	69
120	E.F. Burlingham & Sons	32
146	E-Z-GO	71
165	Enwood Structures	68
160	Excel Bridge Mfg.	68
108	Flowtronex PSI	15
135	Fore Par	50
161	Formost Construction Co.	68
162	Harrington/Harco Corp.	68
144	HJM Corporation	70
147	Jacobsen	72
110	John Deere	18-19
164	JPF Distributors	68
107	Kubota	13
168	Master of the Links	69
122	Millcreek Manufacturing	35
—	NOVARTIS	8-9
—	NOVARTIS*	52-53
127	Nutramax	41
149	Otterbine/Barebo	34
117	Par Aide	29
152	Partac Peat	70
138	PBI/Gordon Corporation	58
136	Pennington Seed	56
166	Precision Small Engine	69
106	ProLink	12
—	Public Golf Forum	4-5
169	Quail Valley Farms	69
113	Ransomes, Ransomes Corp.	22-23
115	Regal Chemical	27
123	Regal Chemical	35
140	Regal Chemical	62
151	Rhone-Poulenc*	54-55
118	Rhone-Poulenc*	30-31
153	Rhone-Poulenc*	30-31
—	RISE*	30-31
—	RISE	65
105	Romtec	11
126	Smithco	40
104	Standard Golf	10
167	Steadfast Bridge Co.	69
101	Tee-2-Green	2
121	Terra Industries	33
131	Terra Industries*	46-47
103	The Toro Company	6-7
129	Toro Comm'l. Prod. Div.	43
170	Trims International Software	69
150	Trims International Software	65
163	Turflite, Inc.	68
125	Ty-Crop	38
102	United Horticultural Supply	3
137	Valent*	57
119	Verti-Drain/Emrex	32
148	Western Organics	45
134	York Bridge Concepts	50
130	Zeneca Professional Prods	44
114	Zeneca Professional Prods	24-25
139	Zeneca Professional Prods	60-61

* Appears in regional editions.

Golf Course Marketplace

To reserve space in this section, call 207-846-0600 ext. 264



Flymo

4 Models
GCT12
GCT15
GCT20
GCT21

Easy to use
Lightweight
Adjustable
Powerful
Fast

The Original Hovering Trimmer

STARTING AT \$339.95

PRECISION SMALL ENGINE CO. INC.

1-800-345-1960

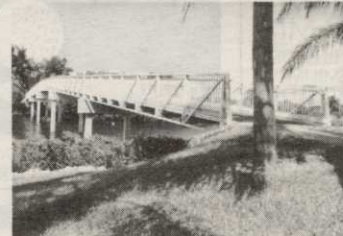
CIRCLE #166

P.O. Box 806
119 40th St. NE Fort Payne, AL 35967

STEADFAST BRIDGES

"DELIVERED ACROSS AMERICA"

PEDESTRIAN AND SINGLE LANE VEHICULAR BRIDGES ENGINEERED AND FABRICATED TO YOUR SPECIFIC REQUIREMENTS. CLEAR SPANS TO 220 FEET AVAILABLE IN MOST OF OUR STYLES. FACTORY DIRECT.



1-800-749-7515

10' 6" X 250' CONNECTOR SERIES ADMIRALS COVE • JUPITER, FL

CIRCLE #167

Keep Your Divot Seed Mixture Where It Is Used ...



... in Divot Seed & Soil tee buckets next to the tee markers. Available in Cedar or Redwood slats and with companion Trash'M debris buckets.

Ask Your Golf Course Distributor for INNOVATIVE MAINTENANCE PRODUCTS

From Master of the Links

P.O. Box 1865, Lombard, IL 60148-1865
(630) 627-1100 • Fax (630) 627-1104

CIRCLE #168

You'll want to play barefoot on our certified grasses.



Featuring:

- Tifton 419
- Midlawn
- El Toro Zoysia
- Meyer Z-52 Zoysia
- Sprig Planting Service
- Laying Machinery
- Accessory Rentals
- Row Planting Service
- Lay and Play Fairway Cuts (warm season)
- Pads
- Big Rolls

CERTIFIED

P.O. BOX 56440 • LITTLE ROCK, AR 72215
1-800-666-0007 501-280-0763 www.qualvalley.com

Quail Valley Farms
Certified and Registered Grasses

Sports, Commercial and Residential Sod Producers

CIRCLE #169

TRIMS Grounds Management Software

TRIMS '97 FEATURES

- Budget & Expense Tracking
- Inventory, PO's & Fuel Reporting
- Personnel & Labor Records
- Equipment Maint. & Work Orders
- Chemical & Fertilizer Records
- Microsoft Office Connectivity
- Setup Wizards & Audio Prompts
- Autocad Connectivity
- Internet Access

TRIMS ADD-ON OPTIONS

- TRIMS Tree Inventory
- TRIMS T&O MSDS Library

Now with Microsoft Office Connectivity!

DON'T WAIT ANOTHER MINUTE! Call or Write for a FREE Demo Disk
You can now read about TRIMS '97 & download the TRIMS '97 Demo Disk for Windows 3.1 or Windows 95 from our Web Site at <http://www.trims.com>

TRIMS Software International, Inc.
3110 N. 19th Avenue, #190
Phoenix, AZ 85015
(800) 60-TRIMS • (602) 277-8027

CIRCLE #170

Nationwide delivery • Install in less than two hours

Golf Course Bridges!
1-800-328-2047

Thousands in use. Built to last. Sponsor Member

CONTINENTAL BRIDGE

Route 5, Box 178, Alexandria, MN 56308 • (612) 852-7500

NGF
NATIONAL GOLF FOUNDATION

CIRCLE #171