

## Ex-sewage plant out as site for displaced California course

SALINAS, Calif. — The ongoing saga surrounding creation of a golf course here to replace the soon-to-be shut down Sherwood Greens Golf Course has taken another twist.

If and when a replacement course is built, it won't be at the Salinas City Sewage Treatment Plant, as planned earlier. The City Council has voted to switch the intended site from the old sewage treatment plant to a more sylvan site in the city.

The new site, however, may mean delays in getting a new course built as the terms of a lease are worked out between the city and Monterey County, which owns the proposed new site. City officials hope to begin construction on a new replacement course as soon as possible to be ready for an April 1998 opening.

Sherwood Greens Golf Course will close in the spring of 1998 and converted into playing fields and parking area as part of a sports complex to be called the Rodeo-Sherwood Regional Recreation Area.



The boulder-strewn 14th hole at Giants Ridge Golf Club, a Jeff Brauer design in Biwabik, Minn.

## Brauer project opens despite obstacles

By HAL PHILLIPS

BIWABIK, Minn. — Three years ago, a turf war between bickering governmental factions nearly scuttled an 18-hole course project here in the state's iron range region. But architect Jeff Brauer stuck to his environmental guns, patiently assuring opponents that a golf course would not tamper with the ecosystem.

Brauer's perseverance will pay off this

month when Giants Ridge Golf Club opens for play. The Arlington, Texas-based architect has made full use of a spectacular north woods setting, routing the course over and around natural boulder fields, wetlands and ancient pines. Designed with help from touring pro Lanny Wadkins, Giants Ridge stands to be Brauer's most high-profile project to date.

"Well, it's actually the lowest profile project we've done, in terms of mound-

ing," Brauer said. "We didn't have to manufacture much because the site is so special. I think because of the site, this is definitely my best work. But the best one is always the next one."

A former president of the American Society of Golf Course Architects, Brauer can list several acclaimed projects in his portfolio, among them Wild Wing Plantation near Myrtle Beach and TangleRidge Golf Club in Grand Prairie, Texas. Yet Brauer believes Giants Ridge should surpass them both.

The irony? The project nearly fell apart in 1994, when state and county environmental organizations disagreed on project approval. The Iron Range Resources and Rehabilitation Board (IRRRB), administered by St. Louis County, okayed the project while the state Department of Natural Resources (DNR) disagreed. Seems the DNR didn't think the county had the technical knowledge to decide one way or the other.

In response, the DNR asked for a full-blown Environmental Impact Study, the first ever requested for a golf project in Minnesota — indeed, the less stringent Environmental Assessment Worksheet had never been requested for a golf project in Minnesota.

After the state's Environmental Quality Board ruled in favor of St. Louis County, two citizens groups immediately filed suit to stop the project. The suit

Continued on page 12

WHAT YOU NEED IS A WAY TO STAND OUT.



## Wash. town may be exposed to resort/golf development

ROSLYN, Wash. — The town made famous as the setting for the television show "Northern Exposure" is now considering a \$350 million destination resort with several 18-hole golf courses as its economic hope for the future.

The town of Roslyn has struggled since the canceling of the show after the 1995 season. Streets that were once lined with tour buses and tourists are now quiet and many small shops opened to take advantage of the economic boom have closed or scaled back their hours.

Now, Trendwest Resorts of Bellevue, Wash., is proposing a massive resort that it says will save the former coal and logging town that had a population of more than 5,000 during World War II but is now down to 895.

Trendwest is proposing 550 hotel rooms, 800 condominiums, more than 3,000 homes and "several golf courses." Trendwest has already built 19 smaller vacation resorts under the Worldmark Resort name in Washington, California, Nevada, Oregon, Hawaii and Mexico.

## Redmond course to expand to 36

REDMOND, Wash. — In an expansion that will make it one of the largest golf facilities in the Pacific Northwest, the Willows Run Golf Course plans to build 18 new holes on 141 acres north of its existing course. Also in the works: A nine-hole pitch-and-putt training course on 24 acres to the south.

The course's owner, David

Evans and Associates, wants to finish the expansion, which will involve building new wetlands at the site, by fall 1998.

The only other 36-hole facility in the Seattle-Bellevue area is the under-construction facility at Newcastle, Wash., just south of Bellevue across Lake Washington from downtown Seattle.

The proposed pitch-and-putt course, along with Willow Run's current 24-station driving range and practice putting greens, will give Willows Run a thorough training facility. In addition to the expansion, Willows Run's owners plan to upgrade the existing 18-hole course to "championship level."

## Brauer in Minn.

Continued from page 4

named some 120 environmental reasons to halt the project — many lifted directly from the DNR's motion for EIS.

Sherry Enzler, Minnesota's deputy attorney general at the time, summed up the situation: "It appears the DNR has been in close contact with the citizens group."

Eventually, the suit was thrown out. Indeed, further studies conducted by Rockwell, Md.-based Environmental & Turf Services (ETS) showed that Brauer and his team had already gone to extraordinary lengths to protect wetlands and preserve endangered species like the barren strawberry and marsh marigold.

"I have never worked on a project where the golf course architect has gone to such great lengths to prevent surface drainage," said ETS President Stuart Cohen at the time.

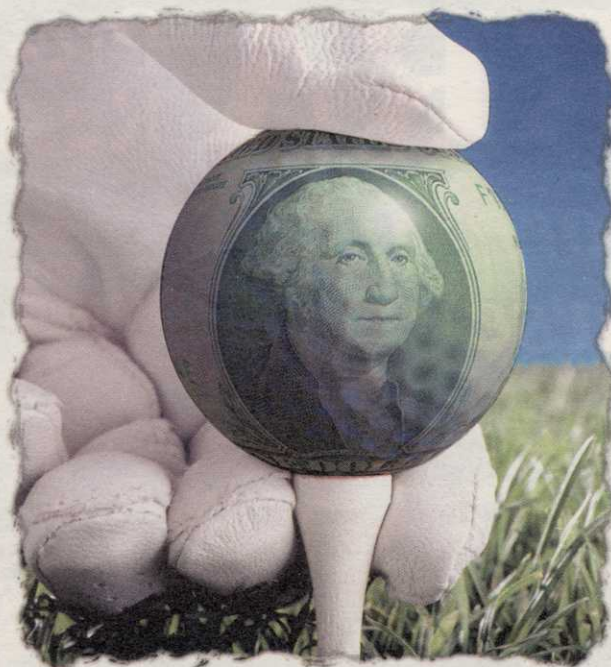
The IRRRB approved the project in early November 1994.

"Two full construction seasons later, here we are," said Brauer, weary from the process but well pleased with the results.

### BRAUER/ELKINGTON CHRISTEN TIERRA SANTA

WESLACO, Texas — The new \$6 million, 18-hole Tierra Santa Golf Course designed by Jeff Brauer has opened for play here. The par-72 layout, which Brauer designed with consultation from PGA Tour player Steve Elkington, is part of a 370-acre single-family home residential community. The master-planned, walled community offers security-gated entrances, tennis courts, a community swimming pool and a private children's park. Tierra Santa, which is a daily-fee public course, will also have one of the finest practice facilities around, with a 23,000-square-foot practice green and a driving range with tees at both ends.

Available  
With No  
Financial  
Exposure

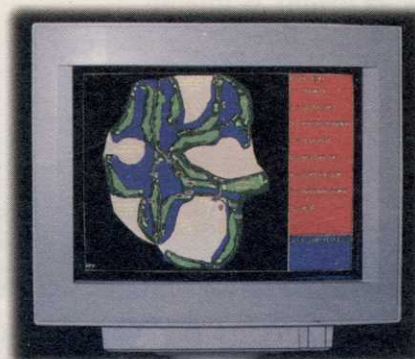


## View Your Course from Tee to Greenback



Standing on this tee, this hole is intimidating, but PROLINK's full color graphics & accurate yardage allows the golfer to choose a strategy which makes birdies possible.

It won't take your ranger 15 minutes to find out why there is a hold-up. With PROLINK, you will know everyone's exact location.



You're serious about the business of managing your golf course and you're serious about providing the highest value golf experience to your customers.

PROLINK is the recognized leader for GPS based yardage and management systems in the golf course industry. Just ask our customers.

Learn how leading course operators use PROLINK to add value to their business.

P.O. Box 6627 • Chandler, Arizona 85246



Ph: (800) 483-5951 • Fax: (602) 961-8537

Come play PROLINK® at these premier locations:

Tucson National Golf & Conference Resort • Sheraton El Conquistador • Kokopelli Golf Resort

CIRCLE #106