

School targets marriage of at-risk students, course maintenance

By JOHN TORSIELLO

GLEN MILLS, Pa. — For almost 175 years, Glen Mills School has been turning around the lives of troubled boys and successfully leading them into a number of professional fields. Now, the school is embarking on an ambitious venture that will add one more career opportunity to its program offerings — golf course management and maintenance.

School officials are in the process of clearing the final legal and procedural hurdles of a \$5.5-million project that will culminate in the construction of a championship course on school grounds. The course is being designed by Weed Design of Ponte Vedra Beach, Fla., the firm that has designed the first golf course at the

'This will be a showpiece for our educational facility and for golf.'

— Gary Ipock
managing director
Glen Mills School

World Golf Village in St. John's County, Fla. Construction at Glen Mills could begin as early as this summer.

"This will be a showpiece for our educational facility and for golf," said Gary Ipock, managing director of the school, which was founded in 1826. "The survival of the course will not depend on income from play. As with other facilities here, operational funds for the course will come from tuition income and other sources. Anything over the operating budget will go toward scholarships for the kids."

Glen Mills is the oldest residential school for court-referred boys between the ages of 15 to 18 in the nation. The 756-acre campus is located 20 miles outside Philadelphia. It has more than 900 students.

Although public play will be allowed, it is clear the primary function will be educational. As if to underscore the low-key nature of the course, no clubhouse is planned, just a "golf cottage" where refreshments can be purchased.

"The kids will have priority on the course," Ipock, a former golf coach at the school, explains. "We can shut the course down if we want and control tee times. This will be a championship course and we may have tournaments here, but that is all down the road."

The school's highly respected golf team will play its home matches on the new layout, which is being designed to play 6,750 yards to a par of 71.

Ipock said 40 to 50 students will be actively involved in educational programs centering around the course. "The emphasis will be on maintenance mechanics, calibrating machinery, how to properly apply chemicals," he explained. "We'll have a nursery to teach kids about different kinds of grasses and how to grow them. There is little in the operation of a golf course that our kids could not be involved in."

A caddie program was originally planned, but school officials decided that avocation's minimal career opportunities did not justify the formal establishment of a curriculum.

The school hopes to coordinate its golf course management and maintenance program with those at colleges, such as Penn State. After students attain a certified level of efficiency in golf course management and maintenance, they may continue their training at a college or university or be placed in a work environment. Officials at

Continued on page 31

Changing the Course.

New HERITAGE™ Fungicide. Changing the Course of Disease Control.

Now, golf course superintendents can change the course of turfgrass disease control with HERITAGE, a completely new fungicide with a novel mode of action.

HERITAGE will give your golf course round-the-clock protection against devastating diseases. With its powerful combination of preventative and curative activity and its high level of effectiveness against 18 of the toughest turf diseases, HERITAGE will make an outstanding difference in the quality and health of your turfgrass.

The active ingredient in HERITAGE is based on naturally occurring fungicides, called strobilurins, which are found in certain mushrooms.

HERITAGE has a novel mode of action which is different than any other fungicide now on the market. It has both preventative and curative activity and is absorbed into the leaf blades and stems



as well as taken up by the roots. This ensures that your golf course is protected from the devastating effects of turfgrass diseases.

HERITAGE is the only fungicide available that controls both brown patch and Pythium, as well as take-all patch, summer patch, anthracnose and snow mold—an unprecedented advantage for the turf professional's disease program. HERITAGE is also effective against certain fungicide-resistant pathogens, making it an extremely useful tool in resistance management strategies.

Gas transport and handling

Continued from previous page
ers slide around even a slight amount.

When either the container or the liner is made of plastic, the plastic material serves as an insulator so the built-up static charge is not easily dissipated.

This charge may be retained

on the outside of the container or in the gasoline itself, conditions perfect for an explosion.

A charged can also be generated when filling the container. While fueling, gasoline flowing through the pump nozzle can also produce a static electricity charge.

This can create a spark be-

tween the container and fuel nozzle, igniting gasoline vapors and causing a fire or explosion. The dangers are greatest on cold, dry days, but the hazard still exists under most climate conditions.

The National Highway Safety Transportation Administration (NHSTA) advises people to place portable containers on the ground before filling them with

gasoline rather than filling them in the pickup bed. If the container is too large to move, use a smaller container.

The NHTSA says they have found two-dozen fires and five injuries associated with static electricity discharge from portable fuel containers.

Most of the fires involved pickup trucks that had plastic bedliners. Fires also resulted

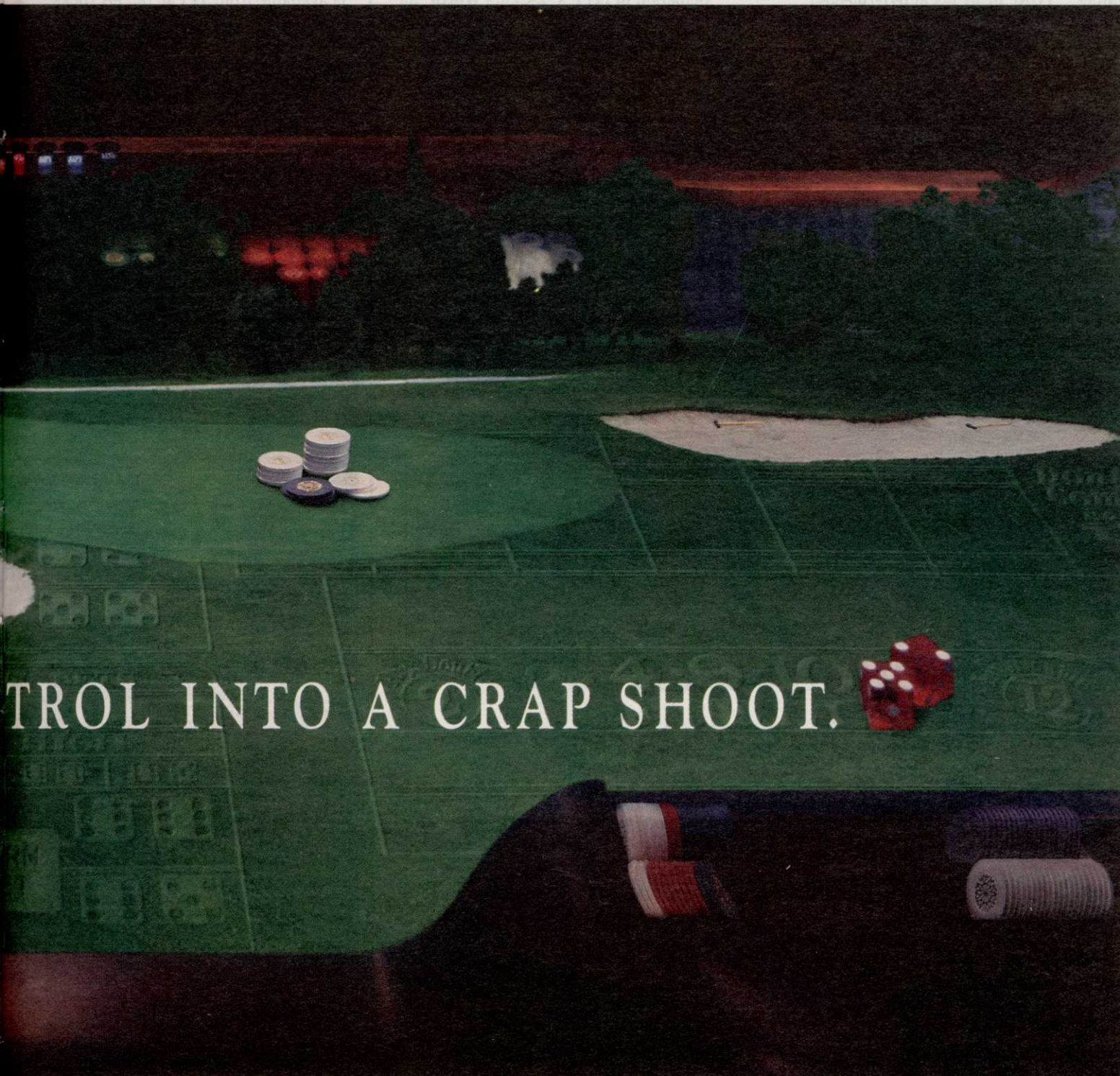
while portable gasoline containers were in filled trunks and passenger compartments of vehicles where carpeting acts as an insulator.

The NHSTA also warns that gasoline should be carried only in approved containers. When filling, bring the fill nozzle in contact with the inside of the fill opening before operating the nozzle.

Keep the nozzle in constant contact with the container at all times while filling.

Do not completely fill containers since gasoline expands as it warms up. Do not use latch-open devices to fill portable containers. Clean up spills immediately.

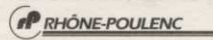
Finally, secure the container tightly in the truck, and of course don't smoke while handling gasoline.



CONTROL INTO A CRAP SHOOT.

preemergence application. And it gives you this dependable, broad-spectrum control without inhibiting new root growth. You'll also appreciate the fact that CHIPCO® RONSTAR® won't leach out or move laterally through the soil and is labeled for use on a wide variety of ornamentals, so you can keep more of your turf weed-free with each application. Protecting your turf against broadleaf and grassy weeds should never be a crap shoot. Rely on the time-proven, turf-friendly control of CHIPCO® RONSTAR®.

chipco
RONSTAR®



call 1-800-334-9745. As with any crop protection chemical, always read and follow instructions on the label before using. ©1997 Rhône-Poulenc Ag Company.

Glen Mills



Continued from page 24

Lake City (Fla.) Community College were consulted on how best to establish golf course management and maintenance curriculum at Glen Mills.

Said Ipock, "Many of our students are from minorities. To my knowledge, I don't know of any other project that will highlight minority youth involvement in golf to such a dramatic degree as this will. The proposal has been well received by the community. Local businesses and residents have been very supportive of what we are trying to do."

The course's design will feature such state-of-the-art features as computerized irrigation and an integrated pest management system. "We are being very environmentally sensitive," said Ipock, who adds that the decision to contract Weed Design was an easy one. "We liked Bobby's commitment to the project. He's given us a great routing and technical support, and he understands what we are all about."

Weed is pleased with the opportunity. "There's a lot of diversity in the terrain, from open meadows to streams to hardwood stands. We're excited. It's a great property and it lends itself to a great layout. This will be a tremendous opportunity for the kids."