

Wash. town may be exposed to resort/golf development

ROSLYN, Wash. — The town made famous as the setting for the television show "Northern Exposure" is now considering a \$350 million destination resort with several 18-hole golf courses as its economic hope for the future.

The town of Roslyn has struggled since the canceling of the show after the 1995 season. Streets that were once lined with tour buses and tourists are now quiet and many small shops opened to take advantage of the economic boom have closed or scaled back their hours.

Now, Trendwest Resorts of Bellevue, Wash., is proposing a massive resort that it says will save the former coal and logging town that had a population of more than 5,000 during World War II but is now down to 895.

Trendwest is proposing 550 hotel rooms, 800 condominiums, more than 3,000 homes and "several golf courses." Trendwest has already built 19 smaller vacation resorts under the Worldmark Resort name in Washington, California, Nevada, Oregon, Hawaii and Mexico.

Redmond course to expand to 36

REDMOND, Wash. — In an expansion that will make it one of the largest golf facilities in the Pacific Northwest, the Willows Run Golf Course plans to build 18 new holes on 141 acres north of its existing course. Also in the works: A nine-hole pitch-and-putt training course on 24 acres to the south.

The course's owner, David

Evans and Associates, wants to finish the expansion, which will involve building new wetlands at the site, by fall 1998.

The only other 36-hole facility in the Seattle-Bellevue area is the under-construction facility at Newcastle, Wash., just south of Bellevue across Lake Washington from downtown Seattle.

The proposed pitch-and-putt course, along with Willow Run's current 24-station driving range and practice putting greens, will give Willows Run a thorough training facility. In addition to the expansion, Willows Run's owners plan to upgrade the existing 18-hole course to "championship level."

Brauer in Minn.

Continued from page 4

named some 120 environmental reasons to halt the project — many lifted directly from the DNR's motion for EIS.

Sherry Enzler, Minnesota's deputy attorney general at the time, summed up the situation: "It appears the DNR has been in close contact with the citizens group."

Eventually, the suit was thrown out. Indeed, further studies conducted by Rockwell, Md.-based Environmental & Turf Services (ETS) showed that Brauer and his team had already gone to extraordinary lengths to protect wetlands and preserve endangered species like the barren strawberry and marsh marigold.

"I have never worked on a project where the golf course architect has gone to such great lengths to prevent surface drainage," said ETS President Stuart Cohen at the time.

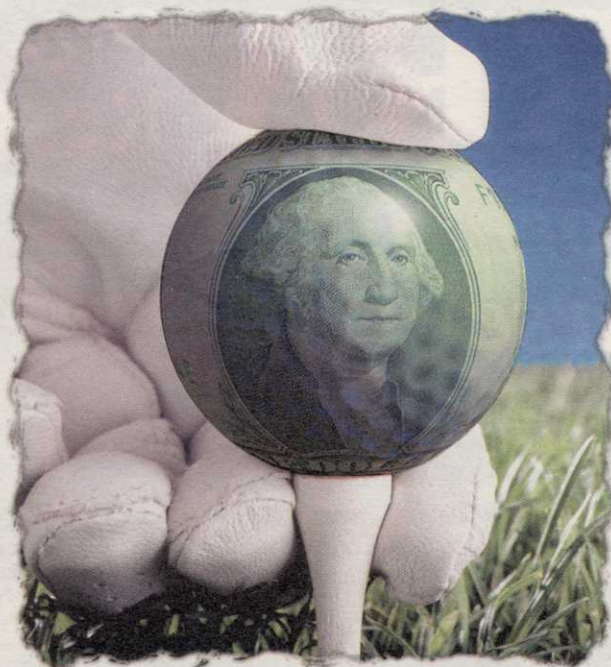
The IRRRB approved the project in early November 1994.

"Two full construction seasons later, here we are," said Brauer, weary from the process but well pleased with the results.

BRAUER/ELKINGTON CHRISTEN TIERRA SANTA

WESLACO, Texas — The new \$6 million, 18-hole Tierra Santa Golf Course designed by Jeff Brauer has opened for play here. The par-72 layout, which Brauer designed with consultation from PGA Tour player Steve Elkington, is part of a 370-acre single-family home residential community. The master-planned, walled community offers security-gated entrances, tennis courts, a community swimming pool and a private children's park. Tierra Santa, which is a daily-fee public course, will also have one of the finest practice facilities around, with a 23,000-square-foot practice green and a driving range with tees at both ends.

Available
With No
Financial
Exposure

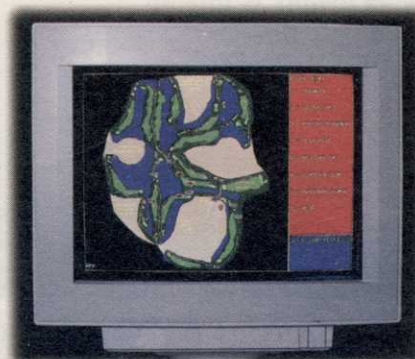


View Your Course from Tee to Greenback



Standing on this tee, this hole is intimidating, but PROLINK's full color graphics & accurate yardage allows the golfer to choose a strategy which makes birdies possible.

It won't take your ranger 15 minutes to find out why there is a hold-up. With PROLINK, you will know everyone's exact location.



You're serious about the business of managing your golf course and you're serious about providing the highest value golf experience to your customers.

PROLINK is the recognized leader for GPS based yardage and management systems in the golf course industry. Just ask our customers.

Learn how leading course operators use PROLINK to add value to their business.

P.O. Box 6627 • Chandler, Arizona 85246



Ph: (800) 483-5951 • Fax: (602) 961-8537

Come play PROLINK® at these premier locations:

Tucson National Golf & Conference Resort • Sheraton El Conquistador • Kokopelli Golf Resort

CIRCLE #106