

Out-of-door lockers clean up indoors

By TERRY BUCHEN

NAPLES, Fla. — Darren Davis, superintendent at Olde Florida Golf Club, had an idea that was ignited while working at some other fine clubs during his career, to create an employee locker area outside the maintenance building in addition to the traditional lockers located inside.

"We built 23 lockers outside," Davis said, "and issued to each one of our employees their own square and round point shovels; leafrake; whipping pole; back brace; bungee cord; hard hat; safety glasses; rain suits; rubber slip-ons booties; and ear plugs with resounding results."

This eliminated tools being lost, broken or laid around as each employee "takes a tremendous amount of pride in having their own set of tools," he said. "We felt we must and wanted to take care of our employees, which goes a long way in employee morale..."

Each employee's tool is numbered with their locker number, either on the wooden or metal handle, or on the safety equipment.

Inside the maintenance building, Olde

Florida has traditional metal full-size lockers for each employee's personal belongings and each locker number corresponds with the employee's outside locker.

Unique padlocks, from the School Lock Co., are individually keyed with a master key system also, Davis said.

"Our up-front cost for tools is more than the traditional way of purchasing them," he said, "but in the long run we actually save money by not having to replace lost, broken or stolen tools and safety equipment."

Gary Grigg, past president of the Golf Course Superintendents Association of America and superintendent at Royal Poinciana Golf Club, liked the idea and formulated a similar outside locker system at his club.

"Darren really had a great idea, so we built our own wooden lockers and we offer steel-toed shoes for each employee as well and use a combination lock," Grigg said. He pointed out that lockers need to be much taller to house shovels, rakes and whipping poles.

"Our employees, like Darren's, really take pride in having their own tools and



SHOP TALK



The outside lockers at Olde Florida Golf Club.

safety equipment. It is the little things that are important to employee pride and morale," Grigg said.

Southern Cal show organizers expect largest, best ever

COSTA MESA, Calif. — Southern California Turfgrass Council officials have announced the organization's 1997 education and trade show will be held Oct. 1-2, here at the Orange County Fairgrounds.

"We flat out believe the 1997 show will be our largest and best ever," said Chuck Wilson, veteran manager of the event called The Turfgrass, Landscape and Equipment Expo.

Sal Ramirez, a Turfgrass Council board member and chairman of this year's show, said: "The 1997 Expo will be a vigorous undertaking that will attract more participants and attendees than ever before. It will be programmed, promoted and marketed in such a way that the show will better benefit and serve all of us in the turfgrass industry. We anticipate an outstanding success."

Exhibits not only include displays of turfgrass products, but also equipment, irrigation systems, pest control and fertilizer products and other material required to grow, use and maintain turfgrass.

For more information call 800-650-9595.

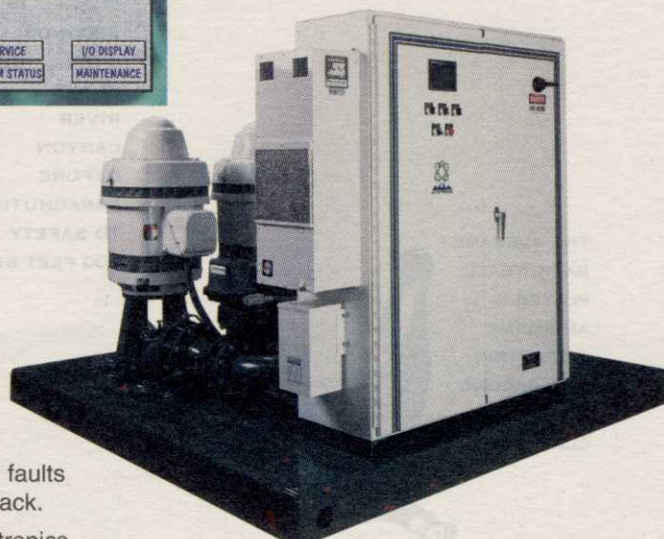
THE MOST ADVANCED CONTROLS IN THE INDUSTRY JUST HAPPEN TO BE ON THE FINEST PUMPING SYSTEM

Watertronics Pumping Systems, with Watervision® Controls



Watervision® UL Listed Controls:

- Provides remote access, Windows based, fully interactive control. Monitor your pumping system with the easy-to-use computer interface from your office or home.
- Intuitive, simple, point and press, touch-sensitive computer control panel with built-in maintenance and troubleshooting screens.
- "Ride Through" self diagnostics analyze system faults, and automatically keeps your station on line. No need to lose sleep during critical night watering cycles.
- Exclusive, patented, *Electronic Butterfly Valves* provide surge-free back-up pressure regulation in the event of VFD faults and smooth pump start-stop transitions that other stations lack.
- Breathe new life into your existing pump station with Watertronics touchscreen controls and electronic regulating valves.



Pumping System:

- All units custom-built to your watering schedule requirements, at costs comparable to others' off-the-shelf models.
- The only manufacturer to provide full dynamic testing of every unit at the factory, with certification of performance.
- Exclusive *Mechanical Seals* on vertical turbine pumps are maintenance-free, eliminating bothersome packing adjustments and spraying water.
- The most durable, best looking finish in the industry — baked epoxy undercoat plus baked UV resistant polyurethane top coat.
- One-piece, structurally engineered, seamless deck eliminates rust-prone welds, sharp edges and debris-collecting surface pockets.

Learn how over 30 years of irrigation pumping experience can make your life easier, and your watering system more dependable and efficient: Call Watertronics today to get the whole story about superior Watervision controls, retrofit conversions, and custom pumping systems:

1-800-356-6686



525 Industrial Drive Hartland, WI 53029 fax: 414-367-5551