

CUPP DESIGN ONE YEAR AWAY

SYCMAR, Calif. — MCG Architects is designing the 10,000-square-foot clubhouse for Cascades Golf Course, a new 18-hole championship layout here. The Robert Cupp-designed course, which will be open to the public, will celebrate its grand opening in the summer of 1998.

The golf club also will include a lighted driving range and an 18-hole putting course. Cascades Golf Course is being developed by Beverly Hills-based Royal Clark Development Co.

Johnston's Sis helps break in course with LPGA pals

MURRELL'S INLET, S.C. — Most golf course architects don't ask their kid sister to help them grand open one of their courses. But for Clyde Johnston and his Wachesaw East design here, it was a grand idea.

Johnston's sister, LPGA professional Cathy Johnston-Forbes, and her fellow Tour players, helped christen Wachesaw East in May by competing in the LPGA's new Susan G. Komen International event. Johnston-Forbes thought it such a spe-

cial occasion that she even led the event after three rounds, only to succumb to a streak of last-round birdies by eventual winner, Australian Karrie Webb.

Johnston-Forbes said the course was extremely well received by the Tour players. "I know Clyde designed the course with the day-to-day play of Wachesaw Plantation members in mind, but ask any of the girls here this week and they'll tell you it plays as a consummate championship course as well," she said. "The four

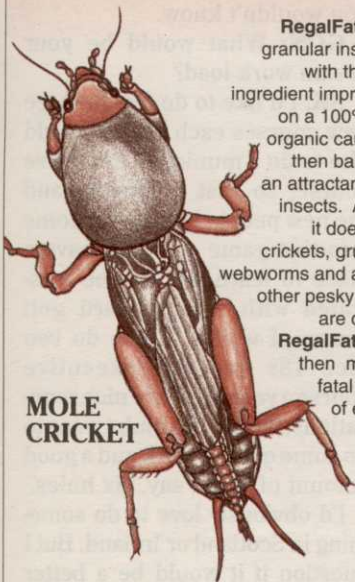
finishing holes are some of the toughest we face all year, and the conditions are remarkable for a course of any age."

Johnston, who walked Wachesaw East with his sister on Monday and played with her in the Wednesday Pro-Am, was proud of her tournament showing. "This is the first course I've designed that has hosted one of the major tours, so it was particularly rewarding that Cathy played so well. I guess I'll have to add a few more bumps to the greens before next year," he said.

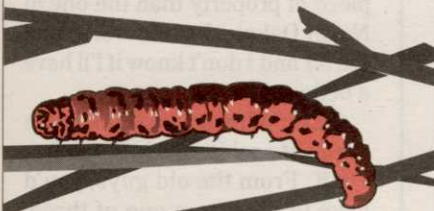
RegalFate™

THE FATAL ATTRACTION FOR INSECTS!

RegalFate™ is a granular insecticide with the active ingredient impregnated on a 100% edible organic carrier and then baited with an attractant to lure insects. And lure it does. Mole crickets, grubs, sod webworms and a host of other pesky insects are drawn to RegalFate™ and then make the fatal mistake of eating it.



MOLE CRICKET



SOD WEBWORM

RegalFate™ is many times more effective because the insect ingests it. Control by contact or vapor action is only partially as effective as the ingested toxicant. Spread the dry granular RegalFate™ for superior results.



Regal Chemical Company
P.O. BOX 900 / ALPHARETTA, GA 30239
PHONE 404-475-4837 / 800-621-5208

CIRCLE #150

Golf Course Site Preparation... Stone-Free...Fast & Easy!

Remove debris, roots and stones from 1/2 inch to 18 inches in size and pick up to 1 ton per minute with Harley stone pickers.



STONE PICKERS



with the Next Generation
Harley

Shaping & Seed Bed Preparation.

Rake and windrow rocks, roots, stones and trash with several Harley Power Rake models in 6, 8, or 12 foot widths.



POWER RAKES

Now, 2 sizes of stone pickers. The popular **Model "A" Hi-Lift** is now joined with the new...

Harley Model "B" redesigned shorter:

- Better maneuverability
- Large or small site work
- Lower maintenance
- Hi-dump to 8 feet
- 1 cu. yd. box

Tractor and Skid Steer Mount
Power Rakes

- **Pro-8 Double Roller**
- **Pro-6 Double Roller**
- **TR 12 Draw-Bar Mount**

Power Box Rakes®

for smaller area tees and greens

- **T-6 Tractor Mount**
- **S-6 Skid Steer Mount**

Both also available in 8 foot sizes.

- Enclosed oil bath drive
- Bi-angular construction
- Vanadium carbide tooth rollers

Do it like the Pros!

For more information, a demonstration or a free video, contact Glenmac today or call your nearest Harley dealer.



PO Box 2135, Jamestown, ND 58402-2135 U.S.A.

(800) 437-9779 ■ (701) 252-9300 ■ FAX: (701) 252-1978 ■ Email: glenmac@daktel.com

CIRCLE #119