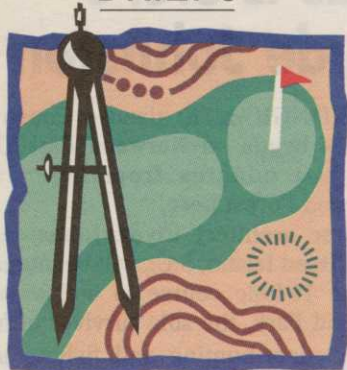


BRIEFS

**KAVANAUGH SIGNS ON IN AURORA**

AURORA, Colo. — The city's Golf Division has retained Kenneth M. Kavanaugh Golf Course Design of Tucson, Ariz., for The Homestead at Murphy Creek, an 18-hole, daily-fee course. Projected construction date is in the fall. Meanwhile, Kavanaugh is renovating Desert Forest Golf Club in Carefree, Ariz., and adding nine-hole expansions to the existing 27 at Gold Canyon Golf Resort and his existing Quail Creek CC in Green Valley, Ariz.

PALMER PROJECT UNDERWAY

COLUMBUS TOWNSHIP, Mich. — Ground has been broken at the Arnold Palmer-designed Dunes Columbus National Golf Course. Columbus Development is planning a facility with limited residential development. The 18-hole course will take advantage of the natural features of the site, which include sand dunes, lakes and wooded ravines.



Arnold Palmer

MEADOWBROOK REOPENING

ST. LOUIS — Meadowbrook Country Club underwent a major renovation here last summer and will reopen this month. Keith Foster was retained to redesign the private club, which included work on all tees, greens and bunkers.

Phillips leaves Jones, starts own practice

By MARK LESLIE

GRANITE BAY, Calif. — Like the Marines, Kyle Phillips is looking for A Few Good Men — owners, that is.

Phillips has opened his own golf course design firm, leaving his position as vice president of design with Robert Trent Jones II after 16 years with the Palo Alto firm.

"I've worked on a lot of different sites — in the Caribbean, Europe and domestically and tackled a lot of problems," Phillips said. "That experience will be helpful. But the owners are very important, and it's crucial to get owners who are not only supportive in the design and construction process, but also in the operation of the golf course including the maintenance, which is so important."

Phillips, 39, has designed about 25 courses since joining Jones shortly after graduating from Kansas State University with a landscape architecture degree. Two of those courses, in particular, he said, reflect what he hopes to continue doing: Wisley Golf Club in London and Granite Bay here.

"They provide very interesting, strategic design, particularly from the opening tee shots," he said. "A lot of the new courses we tend to see today have bracketed [perimeter-weighted] bunkers and you feel you're hitting driver between the uprights on every hole. I've always tried to make the straight shot available, but add the factor of risk and reward, awarding a carry or 'shape' shot..."

"What you find is not only interesting for people who hit



Kyle Phillips at work on site.

the ball a long ways but also for average club member, because with that type of design there is a bailout position for the high-handicapper."

A fan of such classical architects as Alister Mackenzie and A.W. Tillinghast, Phillips said he incorporates their "mid-bunkering" ideas into his designs.

Continued on page 40

Dream design course taking students to Ireland

DETROIT — Golf course architect Ray Hearn is presenting a seminar and itinerary "An Introduction to Golf Course Design on Location in Ireland," Sept. 5-13, that will kick off at Royal Portrush and wind up at Waterville.

The series of seminar and discussion sessions is being coordinated in conjunction with Michigan State University (MSU). Dr. Warren J. Rauhe, MSU professor of landscape architecture, will co-teach.

"The true seaside links of Ireland and Scotland are a must-see," said Hearn from his headquarters in East Lansing. "This trip will be a pilgrimage for anyone inter-

ested in golf course design."

"As a young architect, these courses made a major impact on my design philosophy," added Hearn. "There are so many lessons to be learned over there, to understand why these courses are sought out by so many people around the world."

Participants will play, study and discuss Royal Portrush (Dunluce), Royal Country Down, Portmarnock (Championship), Lahinch (Old), Ballybunion (Old) and Waterville.

Some of the topics that will be covered in the traveling seminar include:

- The history of the game, golf course

architects and Irish golf courses.

- Design and strategy.
- The design/construction process, course routing and greens/tees/fairways/hazards.
- Design your own golf course.

A certificate will be given upon completion of the course.

Hearn established his golf course design firm in 1996 after working 10 years with Michigan architect Jerry Matthews.

For more information contact Ray Hearn in writing at Raymond Hearn Golf Designs, Inc., 271 Woodland Pass, Suite 200, East Lansing, Mich. 48823.

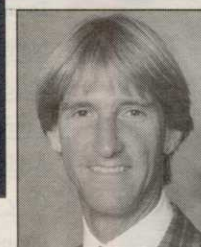


The 18th green complex at Oak Hill Country Club's East Course in Rochester, N.Y., got a Craig Schreiner facelift in 1994. It included bunkers — renovated into the classic style and with resodded faces — and contouring at the rear of the green.

Craig Schreiner is one of a handful of golf course architects who hold degrees in turfgrass management (Ohio State University at Wooster in 1974) and landscape architecture (Oregon State in 1975). He

also worked for Wadsworth Golf Construction Co. and for designers Don Sechrest (from 1985-88) and with Dr. Michael Hurdzan before forming Schreiner Design in 1990.

His Stone Creek Golf Course in Tulsa, a collaboration with Sechrest, and Cobblestone Creek Country Club in Victor, N.Y., assisting Hurdzan, have received high praise.



Q Schreiner shines on 'classics' & new work

Golf Course News: You came to the design business prepared through agronomy and landscape training. How important is that combination?

Craig Schreiner: It is the most important part of my background, the main reason why I have been able to get on my feet. It was custom-designed by Mike Hurdzan. I did everything he told me to do. And you know what, it worked. There are a lot of individuals who have segments of it. But very few who have all of them. Get a turf degree and learn how to maintain a golf course. That was a real eye-opener. I learned so much at Baltimore Country Club under [then-superintendent] Meryl Frank in summer of 1983. Then a year working construction for Wadsworth [Golf Course Construction Co.].

GCN: How does your agronomic train-

Continued on page 38

Q&A: Schreiner

Continued from page 33
ing affect your design?

CS: Microclimates, and the importance of drainage. We are dealing with a different transition zone area and huge mature trees blocking the air and sun, relative humidities that are off the chart, heat indexes on several varieties of turf... Whatever season it might be, you lose poa, Bermudas and zoysias get hammered and blistering summers heat up the Northern grasses.

The agronomic studies helped me so much it's unbelievable. When I walk into a situation I'm immediately a friend of the superintendent. I'm familiar with the subgrade, the mixes, the soil pHs, when you have to grow in seed, how to maintain turf, what is safe and not safe. Cut 25,000 square feet of greens with a walk mower every day and you learn about drainage, what's too close for bunkering, how much sand gets swept up onto the green, what's a good distance between a bunker and green agronomically, what's safe, what kind of bunker design has washouts.

GCN: You've done some renovation work at Oak Hill preparing for tournament events. How did that expand your experience?

CS: At Oak Hill we have the Amateur next year. We renovated the entire Alice Creek on the East Course. We had to dredge it. We are creating a better environment and restoring by tenfold what was there. But we had to jump through the [regulatory] hoops. But it was to the satisfaction of the New York DEP. I had gained their confidence with the wetland work we did at Greystone and Cobblestone.

GCN: Working on the old classic courses must be satisfying.

CS: Yes, to get into a project like Oconomowoc, an old Donald Ross course left intact. I'm giving it a haircut and a shave, cleaning up a few holes, and it's turning out beautifully.

GCN: Do you have a pet project?

CS: Trees. I love trees — when they're in the right place. I spend 35 percent of my time on every master plan trying to educate people about overplanting and abuse of trees on golf courses.

The USGA has picked up the pace in pushing for removal of trees. Many courses could remove one-third of their trees and never know it.

I can talk to a green chairman and say, "Your job is not on the line here; the superintendent's is. Next time you drive by a sod farm count the trees and look at the quality of the grass. Do you want the Oconomowoc Arboretum or Oconomowoc Golf Club? We'll plant more trees, but the right ones in the right places."

When they understand that, they get in line. It's also very environmentally responsible. The more trees you have, the more fungicides and pesticides you use and the more your turf is stressed. IPM [Integrated Pest Management] has to do with creating optimal environments, and that doesn't include trees on the south and east sides of your greens and tees.

GCN: How would you describe

you design style? What do you like and not like?

CS: I really like playability. It's so important to have 45-yard landing areas, and an open approach to every green with an approach shot over 150 yards. It's so much fun to have the options to play the ball in a lower or higher trajectory depending on wind and pin placement. Playability is so important because that's where the creative part of

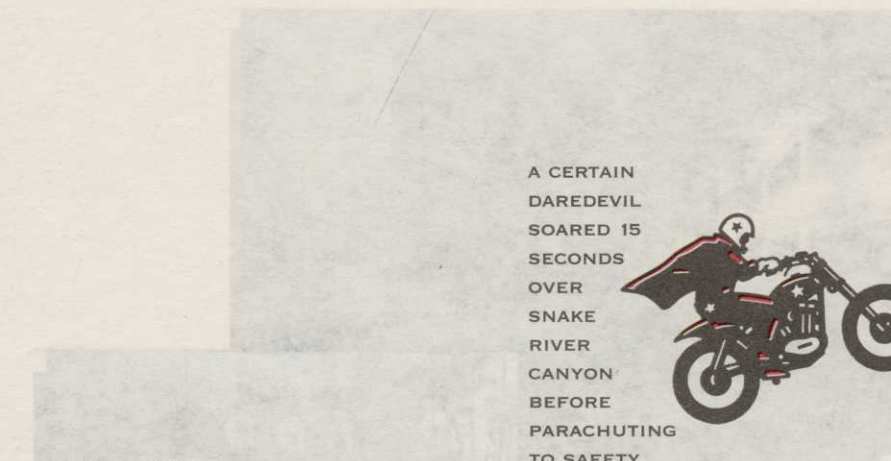
the game is. If you restrict shotmaking you've lost all individual creativity. And that's the mystique of golf. That's the thing that makes fanatics out of us: the fact that we get to create a golf shot, if the architect gives us the option to create a shot. You have that happening in the classically designed courses. They give you alternate routes and enough room to go around it.

In the '90s and turn of the

century you will see more playability in our golf courses, if you haven't seen it already. A good example is some of the greens we've done. The heart of every golf hole is the green. In architecture, that's go to be paramount.

The key is many, many pin placements. The degree of slope and area of the pin placements are critical. The square footage of the pin placements is key,

Continued on next page



A CERTAIN
DAREDEVIL
SOARED 15
SECONDS
OVER
SNAKE
RIVER
CANYON
BEFORE
PARACHUTING
TO SAFETY
600 FEET BELOW.

THE AVERAGE
BASKETBALL
PLAYER IS
AIRBORNE
A FRACTION
OF A SECOND
DURING A
SLAM DUNK.



A MAGICIAN'S
ASSISTANT
LEVITATES
ABOUT
TWO
MINUTES
DURING A
TYPICAL
PERFORMANCE.



WHAT GOES UP MUST COME DOWN. UNLESS, OF COURSE, IT'S BANNER® MAXX®, THE FUNGICIDE THAT WON'T SETTLE OUT. PETROLEUM SOLVENTS OR ODOR. EVEN BETTER, IT CONTROLS 18 TURF DISEASES, INCLUDING DOLLAR SPOT AND SUMMER

©1997 Novartis Corporation.

Continued from previous page

The style of a great course is playable landing areas so you can find the ball, or have a degree of error that is acceptable

Great courses usually have big greens. That movement on the green should always reflect surface drainage and that gets back

They are so perfect now.

CS: You have to gain construction experience that most lack; not showing up as a site representative but actually working on the construction. There's a big difference between building and showing up in penny loafers and a rental car. I worked at Val

The very first golf courses were in beautiful natural areas and laid out in that context. That's kind of where we're headed back. It's nice to see a resurgence and a Renaissance. It's a little tamer and more naturalized areas are the trend.

A black and white photograph of a bottle of Banner Maxx herbicide. The bottle is dark-colored with a white label. The label features the text "Banner" in a stylized font and "MAXX" in large, bold, capital letters. There is also a small logo on the left side of the label. The bottle has a black cap and a handle on the right side.

Turf & Ornamental Products. Banner® MAXX® is a registered trademark of Novartis Corporation. Important: Always read and follow label directions.



Charter Member
Platinum Tee Club