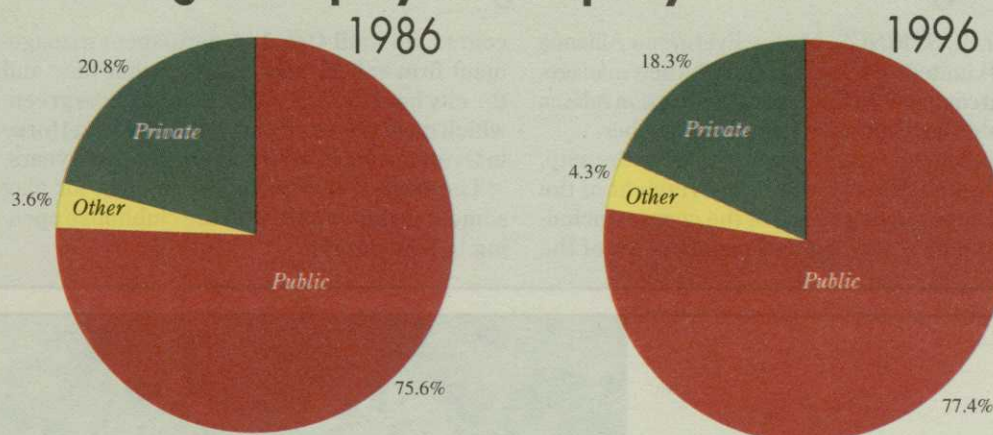
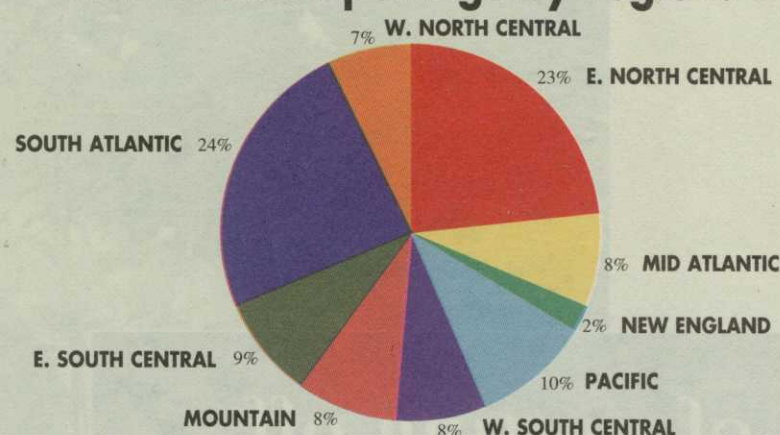


Where golfers play the majority of their rounds



Golf course openings by region: 1996



PUBLIC GOLF GROWING

The two top graphs (provided by the National Golf Foundation) show that the percentage of rounds played by U.S. golfers at public courses grew from 75.6 percent in 1986 to 77.4 percent in 1996. Eleven years ago, according to the NGF, private golfers made up more than 20 percent of the golfer population. By 1996, their percentage had dropped to just above 18 percent as public golf continued to gain ground into what was once mostly a private game. The total number of private golfers grew a modest 9.4 percent during that 11-year period, while public golfers grew by more than 27 percent. The bottom graph shows that nearly half the 1996 total course openings occurred in either the South Atlantic (24 percent) or East North Central (23 percent) regions of the country. The East North Central region should continue to experience strong levels of golf course development activity as the region strives to meet well established and growing demand, the NGF reports.

Source: National Golf Foundation's "Trends in the Golf Industry: 1986-1996"

BRIEFS

ROBINSONVILLE, Miss. — Grand Casino Tunica has hired Hale Irwin to design an 18-hole championship golf course here. The \$18 million course is scheduled to open in spring 1998. Grand Tunica is the closest of the nine Tunica County casinos to Memphis, Tenn. The 7,000-yard course will be a daily-fee facility and is located directly across the levee from the 340,000-square-foot casino complex on U.S. Highway 61.

LONGMONT, Colo. — The public, 18-hole Haystack Mountain Golf Course recently unveiled the fruits of a renovation. The facility's driving range has been doubled and reworked to include target greens and it is now lighted. A new ninth hole also opened last month. The clubhouse was also completely remodeled with a fresh food deli and full-service bar.

MOBILE, Ala. — City officials are looking into building a new nine-hole course as part of a proposed recreation site near the Mobile Infirmary Medical Center overlooking Three Mile Creek. If it does get built, the new course would be sited not far from what used to be the Oak Hills Country Club, a public course that later became a private country club and existed from 1933 to 1949.

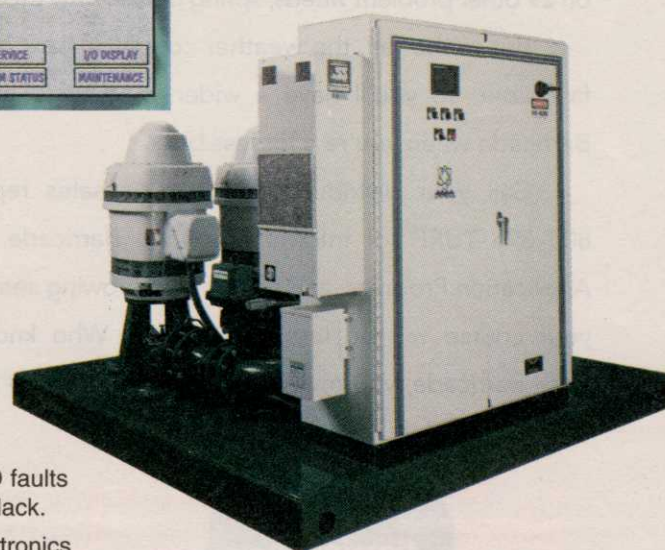
THE MOST ADVANCED CONTROLS IN THE INDUSTRY JUST HAPPEN TO BE ON THE FINEST PUMPING SYSTEM

Watertronics Pumping Systems, with Watervision® Controls



Watervision® UL Listed Controls:

- Provides remote access, Windows based, fully interactive control. Monitor your pumping system with the easy-to-use computer interface from your office or home.
- Intuitive, simple, point and press, touch-sensitive computer control panel with built-in maintenance and troubleshooting screens.
- "Ride Through" self diagnostics analyze system faults, and automatically keeps your station on line. No need to lose sleep during critical night watering cycles.
- Exclusive, patented, *Electronic Butterfly Valves* provide surge-free back-up pressure regulation in the event of VFD faults and smooth pump start-stop transitions that other stations lack.
- Breathe new life into your existing pump station with Watertronics touchscreen controls and electronic regulating valves.



Pumping System:

- All units custom-built to your watering schedule requirements, at costs comparable to others' off-the-shelf models.
- The only manufacturer to provide full dynamic testing of every unit at the factory, with certification of performance.
- Exclusive *Mechanical Seals* on vertical turbine pumps are maintenance-free, eliminating bothersome packing adjustments and spraying water.
- The most durable, best looking finish in the industry — baked epoxy undercoat plus baked UV resistant polyurethane top coat.
- One-piece, structurally engineered, seamless deck eliminates rust-prone welds, sharp edges and debris-collecting surface pockets.

Learn how over 30 years of irrigation pumping experience can make your life easier, and your watering system more dependable and efficient: Call Watertronics today to get the whole story about superior Watervision controls, retrofit conversions, and custom pumping systems:

1-800-356-6686



WATERTRONICS®

525 Industrial Drive Hartland, WI 53029 fax: 414-367-5551