

BRIEFS



SOD BUYING NUMBERS UP

A recent Gallup poll revealed that at least 4.9 million households in the United States anticipate buying turfgrass sod this year. That is a 36-percent increase from 1996 and far outstrips the 1995 figure of 1.9 million. The survey also reported that in 1996 U.S. households purchased \$426.2 million in turfgrass sod — \$188.6 of which was professionally installed.

JACOBSEN KEYNOTING FOR GCSAA

ANAHEIM, Calif. — PGA Tour veteran Peter Jacobsen will keynote the Opening Session, Feb. 4, of the 69th International Golf Course Conference and Show here. The annual event, sponsored by the Golf Course Superintendents Association of America, will be held Feb. 2-8. Author of the book, *Buried Lies: True Tales and Tall Stories from the PGA Tour*, Jacobsen has won six Tour events, participated on the 1985 and 1995 U.S. Ryder Cup teams and was player director on the Tour policy board from 1983-85. He owns a golf course design company.



Peter Jacobsen

author of the book, *Buried Lies: True Tales and Tall Stories from the PGA Tour*, Jacobsen has won six Tour events, participated on the 1985 and 1995 U.S. Ryder Cup teams and was player director on the Tour policy board from 1983-85. He owns a golf course design company.

IPM SEMINAR SCHEDULED

PHOENIX — The major concepts of a sound Integrated Pest Management program will be presented by Dr. Karl Danneberger of Ohio State University here Sept. 3. Presented by the Cactus and Pine Golf Course Superintendents Association and Golf Course Superintendents Association of America, the seminar will focus on managing turfgrass under environmental stress as well as pest management and pesticide resistance. Advanced registration is required. People may call 800-472-7878 for more information.

GA. SETS FIELD DAY, TURF CONFERENCE

GRIFFIN, Ga. — Two Georgia turf events have been scheduled. Georgia's Turfgrass Field Day has been set for Aug. 27 here. It will feature tours of the research plots, discussions of turfgrass breeding and research and an exhibit area of turf equipment. Meanwhile, the Georgia Turfgrass Association's 28th annual Turfgrass Conference and Show will be held Dec. 9-11, emphasizing sports and commercial turf management, golf turf issues, turf breeding, landscape and ornamentals. For information, people should contact Douglas Moody at 770-975-4123.

Walking the talk at Widow's Walk GC

Superintendent Jeff Carlson pushes all the environmental hot buttons — and wins

By MARK LESLIE

SCITUATE, Mass. — The Shakespearean student in him might look at this job as *A Midsummer Night's Dream*. The analyst in him might view it as an opportunity to fill a spreadsheet with figures. But the superintendent in Jeff Carlson views his position at Widow's Walk Golf Course here as "professionally satisfying," bringing



Jeff Carlson

"very high satisfaction as a golf course and grow-in superintendent and very, very high satisfaction when you add its restoration aspect."

The "restoration" to which Carlson refers is creating a living golf course from a "dead" piece of ground: a former gravel pit and dump site littered with cement blocks, old refrigerators and other assorted ugliness. The course, municipally owned Widow's Walk, has gained more public attention than almost any in the country because it will serve as a working laboratory to discover the impact of a golf course on wetlands, wildlife and habitat.

The Massachusetts Audubon Society and Scituate Conservation Commission have been heavily involved in this reclamation project.

Continued on page 20



Jeff Carlson photo

No, this is not sod, which needs repair every couple of years. It's shag carpet.

Used carpet for permanent 'sod-wall' bunkers? Good trade

By MARK LESLIE

SCITUATE, Mass. — Some inventions seem to be just laying around under a bush waiting to be discovered by an innovative mind. Such was the case of the "sodwall bunker kit in waiting" — Dr. Michael Hurdzan's answer to a standard, old-time stackwall bunker.

Fresh from a trip to Scotland, the home of sod-wall bunkers, Hurdzan was walking the property of what would become Widow's Walk Golf Course here — an abandoned gravel site. "He's walking along and finds this ugly carpet under a bush, and all kinds of light bulbs go off with him, and him alone," recalled Jeff

Carlson.

Voila! The idea of the "carpet-wall bunker" was born.

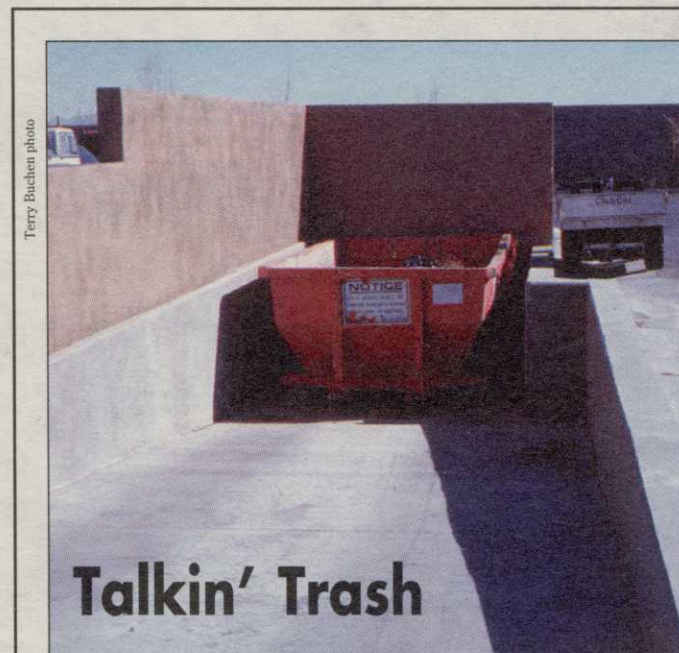
"Maybe this will change the face of American golf a little bit," Hurdzan said. "It will add spice to a linksy golf course."

"As an alternative to sod, I can't think of a better one," said Carlson. "It has the potential to really stay in the industry."

"You had to have the right client to try it," Hurdzan said. "This was the perfect opportunity because of the experimental side of the project. Now that it's done it will be a much easier sell."

"I think sodwall bunkers add such a distinct flavor to a golf course that you

Continued on page 22



Terry Buchen photo

Talkin' Trash

Keeping control of golf course trash in a clean and efficient manner, is accomplished with this ramp up to a trash bin.

By TERRY BUCHEN

LAS VEGAS — One of the best ways to handle golf course maintenance trash is demonstrated at the new TPC at The Canyons here. The maintenance complex, guided by Kim Byran Wood, features a ramp as the key to collection.

Key to the system is an 8-inch-thick concrete ramp,

Quick and easy clean-up at Canyons

with surrounding walls that are 12 inches thick — all with reinforcing rods (rebar), Wood said.

An overhead, colored decorative wall, which shields the employees' parking lot view of the trash re-

Continued on page 18

Inroads in 'biologicals' research, Nelson reports

Dr. Eric Nelson has been an associate professor of plant pathology at Cornell University in Ithaca, N.Y. since 1993. He has done extensive work with biological controls to fight turfgrass diseases and his work has been extensively published.

He holds master's and doctorate degrees in plant pathology from Ohio State University.



Dr. Eric Nelson

Golf Course News: What type of work are you doing on biological controls?

Eric Nelson: We have two approaches. The first is the addition of organic amendments that provide a food source for beneficial microorganisms. The amendments enhance the microorganisms' activity and control pathogens. We've replaced peat moss with compost in top dressing and seen up to 90 percent disease control with the compost amendment. Most of the control has been in foliar pathogens such as dollar spot, brown patch and gray snow mold. We've also seen control of pythium root rot, which is interesting because it isn't a foliar problem. We've tried all types of composts: animal manure, yard waste, industrial sludges. Poultry manures and some sludges have worked very well. Brewery sludges have been very effective, having a sustainable supply with predictable results.

The second approach is specialized microbial inoculants. That involves spraying bacteria, fungi or actinomycetes (bacteria that grow like fungus) on turf to control disease. We've

Continued on page 16

See related story, page 1

A tale of bales of barley straw and algae

By MARK LESLIE

TORONTO — News flash: Folk remedy strikes at the heart of the pond algae problem.

While science and technology are striving to remove algae from ponds, some superintendents are accomplishing the task with a simple bale of barley straw.

"Generally speaking, I'd say it works," said Gordon Witteveen, director of golf maintenance for the Board of Trade's five golf courses here.

Witteveen, who has two or three bales of barley straw in each of his half-dozen ponds, said, "We've implemented it and had pretty darn good success."

Two bales per acre of pond is sufficient, he said. He also suggested wrapping the bale with chicken wire or fishing net to prevent its falling apart when it decomposes. The bale floats, anchored by a string tied to a cement block.

"In Canada we can't use any dye or chemicals for aquatic weed control in non-self-contained ponds. If the pond is self-contained, you can use chemicals, but you must get a permit for every application," Witteveen said. "Mechanical harvesters, or long rakes can take algae out. Fountains work well, too. This [barley straw] is another tool."

But why would barley straw rid a pond of algae?



ON THE GREEN A bale of barley straw floats atop a one-acre pond on the 8th hole on the East Course at Toronto's Board of Trade Country Club.

"This is my theory," said Dr. Eric Nelson of Cornell University, who has seen this method work. "It ties up nitrogen during decomposition of the barley straw. And since it's the nitrogen in the water that promotes algal blooms, they stop."

"I have not seen any research to prove this. But it makes sense. When you mulch plants with wood chips sometimes those

chips pull nitrogen right out of the plant."

One difficulty could be in finding pure barley straw to begin with. But the farmers Witteveen works with have a large percentage of barley in their fields, he said.

Meanwhile, using the bales adds a novelty to the course, right? "Everybody is talking about it on the golf course," Witteveen said. "They're asking, 'What are these bales of hay?'"

Trash talkin'

Continued from page 15

ceptacle, is constructed with cinder blocks covered with painted stucco. A 12-inch drain pipe was installed at the bottom of the ramp with a 24- by 24-inch catch basin for drainage during a storm. A high-pressure hose off of the irrigation system makes clean-up easy.

A trash dumpster, ranging in size from 20 to 28 cubic yards, is usually used.

"While they are emptying the dumpster, we use a front-end loader to clean up any spilled debris, sweep up any smaller debris and then hose off the entire area," Wood said. "If the truck picking up the dumpster brings an empty one along, the turnaround time is limited to clean up the ramp area."

While the filled dumpster is hauled to the landfill, it must be covered at all times.

When an employee empties a maintenance vehicle, they simply slide the debris into the dumpster. On rare occasions, a dumpster is delivered with higher sides than normal, which forces an employee to shovel debris up over the side of it.

But Woods said: "We request our normal height dumpster, where the top is flush with the concrete apron, but they just aren't available sometimes. The total outside area of our maintenance complex, including the trash dumpster area, is completely lighted, using photo-electric cells with timers."

The Links Golf Course
1997 Clubhouse Drive
Somewhere, CO 59000

Memo from: The desk of Tom Smith
Greens Committee Chairman

Memo to: Bob Barlow, CGCS

Subject: Accessory Budget

Bob, Golf Course Solutions is refurbishing metal accessories for many of the top golf courses and management companies in the country..

Please present the pros and cons of refurbishing our metal accessories with Golf Course Solutions vs. refurbishing in house or buying new....

Thanks!

GCS Inc.
Golf Course Solutions Inc.
Providing Innovative, Low Cost Maintenance Solutions
714-427-5400 Fax 714-427-5411
2127 S. Grand Ave. Santa Ana CA 92705

GREENS COMMITTEE ACCESSORY BUDGET PRESENTATION

ACCESSORY BUDGET - 3 YEAR PROJECTION

Accessories	No.	New Accessories	In House Refurb	GCS Inc Refurb
Ball washer	18	\$3,024	\$1,727	\$994
Post	18	405	324	279
Ball washer base	18	1,188	486	418
Foot Scraper	18	783	432	396
Trash Bracket	9	306	216	198
Putting Cups (Aluminum)	36	594	447	324
Benches - 6' park style bench	9	3,915	1,806	1,953
Tee Markers - custom forged	108	2,160	1,179	864
Sales Tax		742	0	0
TOTAL		\$13,117	**\$6,617	\$5,426

** NOTE: Our in house refurbishment lasts about 1 year. I multiplied our annual in house cost by 3 times to calculate a life cycle equivalent comparative cost to Golf Course Solutions.

PROS & CONS COMPARISON TO GOLF COURSE SOLUTIONS REFURBISHMENT

PROS	CONS
<ul style="list-style-type: none"> Saves money - over 70% more to refurb our ball washers in house when compared over equivalent life spans. <ul style="list-style-type: none"> GCS Inc's powder coat finish looks far better than ours and is much more durable. GCS Inc installs anti-seize set screws. All welding is included in the price. New accessories cost as much as 140% more. <ul style="list-style-type: none"> Golf Course Solutions' stuff looks better than new! Reduces time demands on staff. Can reduce staff or refocus on more important projects. Provides a cost effective way to change the color of our accessories like we've talked about before Golf Course Solutions can powder coat paint our bench ends and retrofit our benches with maintenance free recycled plastic lumber for about half the cost of a new bench. 	<ul style="list-style-type: none"> We have to ship accessories to GCS Inc.

Bottom Line: Let's go with the pros!

GCS Inc. REFURBISHING YOUR METAL COURSE ACCESSORIES...

2127 S. GRAND AVE. SANTA ANA, CA 92705 (714)427-5400 FAX (714)427-5411 Representative Inquiries Welcome!