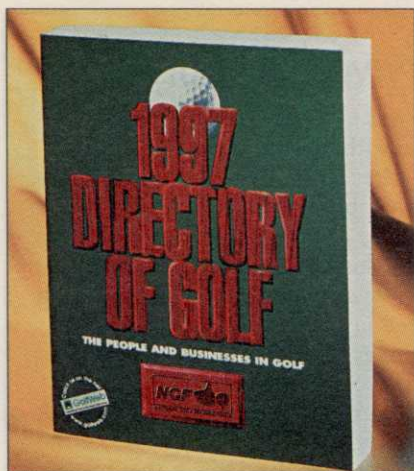


IN BRIEF

CINCINNATI — The notoriously soggy Reeves Golf Course got a late start this summer after a 9-week shutdown that lasted into late June. An estimated 19,000 fewer rounds had been played as of mid-July compared with 1995, as parts of the popular muni track were underwater most of the spring. Heavy rains and a rising river caused water tables to seep upward.

MARNE, Mich. — There's nothing like a name change to lend an air of seriousness to a golf course. Once known by the cozy name of Li'l Acres, the nine-hole course in this small town near Grand Rapids is now known as Sand Creek Golf Course & Driving Range. Owner-operator Linda Zahn said she changed the name in keeping with many improvements made at the course recently. Sand Creek now offers a lighted chip and putt practice area. On the 1,965-yard course, new trees were planted and bunkers installed.

WILLIAMSBURG, Va. — The newly-opened Stonehouse Golf Club here took a beating from Hurricane Bertha, which shut the course down for more than a month. Stonehouse, which opened for play June 20, was drenched with rain — 3-1/2 inches overnight in mid-July. About one-third of the 13th green was washed out, according to Forrest Fezler, director of golf. The 13th green was resodded and rebuilt.



NGF directory hits streets & the web

JUPITER, Fla. — The National Golf Foundation (NGF) has released the first-ever, industry-wide reference guide called the *1997 Directory of Golf*. This 500-page publication covers the entire golf industry and lists more than 6,000 golf-related businesses and 10,000 executives. It is also indexed by industry segment for easy reference.

Annual print updates are planned. Monthly updates will be available to those with access to the Internet. NGF has entered into an agreement with GolfWeb the on-line golf information network, to publish on-line NGF's *1997 Directory of Golf*. The directory can be viewed through GolfWeb at: <http://www.golfweb.com>

The book may be purchased by calling NGF at 800-733-6006.

Supers stage their own Ryder Cup this month

Hayter Cup matches set for Sept. 16, in Britain

By TREVOR LEDGER

LIVERPOOL, England — Education, camaraderie and keen competition will converge at West Lancashire Golf Club Sept. 16, when the superintendents of "the Americas" take on the greenkeepers of the "Rest of the World" here in a Ryder Cup-style showdown.

The inaugural Hayter International Cup will bring together 24 superintendents from the Americas, Europe and Australasia, and deposit them at the West Lancs GC near Liverpool to slug it out. The format is reminiscent of the now, very high-profile and nerve-searing Ryder Cup. The one-day event will feature six four-ball matches in the morning and twelve singles matches in the afternoon.

For some years now, Hayter Limited has sponsored the Hayter Challenge, a respected annual golf tournament on the U.K. domestic greenkeeping scene. Yet the international challenge is a more recent brainchild of Hayter's Kim Macfie

Continued on page 40

Trevor Ledger is Golf Course News' European correspondent.



THE ROSTERS

The players participating in the first-ever Hayter International Cup, a Ryder Cup-style team match between superintendents from The Americas (North, Central and South) and the Rest of the World (Britain, Europe, Australasia) to be held Sept. 16, at the West Lancashire Golf Club near Liverpool, England:

Americas: Samuel T. Williamson, Jim Dusch, Robert Heron, Douglas Meyer, Ricardo de Udaeta, George Renault, Dean Morrison, Paul McGinnis, Alejandro Young, Randy Nichols, Thom Charters, Gary Grigg.

Rest of the World: Cosme Bergareche, Fredrik Goa, Andreas Kauler, Derek McJannet, Ignacio Soto Alarcon, Peter Schumacher, Peter Frewin, Michael Dohlon, Ian Buckley, Matthias Ehser, Alexander Reid, Brian Mulholland.

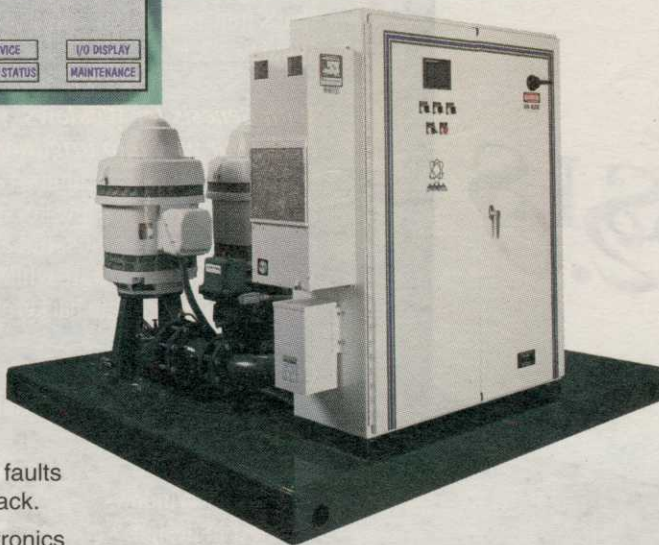
THE MOST ADVANCED CONTROLS IN THE INDUSTRY JUST HAPPEN TO BE ON THE FINEST PUMPING SYSTEM

Watertronics Pumping Systems, with Watervision® Controls



Watervision® UL Listed Controls:

- Provides remote access, Windows based, fully interactive control. Monitor your pumping system with the easy-to-use computer interface from your office or home.
- Intuitive, simple, point and press, touch-sensitive computer control panel with built-in maintenance and troubleshooting screens.
- "Ride Through" self diagnostics analyze system faults, and automatically keeps your station on line. No need to lose sleep during critical night watering cycles.
- Exclusive, patented, *Electronic Butterfly Valves* provide surge-free back-up pressure regulation in the event of VFD faults and smooth pump start-stop transitions that other stations lack.
- Breathe new life into your existing pump station with Watertronics touchscreen controls and electronic regulating valves.



Pumping System:

- All units custom-built to your watering schedule requirements, at costs comparable to others' off-the-shelf models.
- The only manufacturer to provide full dynamic testing of every unit at the factory, with certification of performance.
- Exclusive *Mechanical Seals* on vertical turbine pumps are maintenance-free, eliminating bothersome packing adjustments and spraying water.
- The most durable, best looking finish in the industry — baked epoxy undercoat plus baked UV resistant polyurethane top coat.
- One-piece, structurally engineered, seamless deck eliminates rust-prone welds, sharp edges and debris-collecting surface pockets.

Learn how over 30 years of irrigation pumping experience can make your life easier, and your watering system more dependable and efficient: Call Watertronics today to get the whole story about superior Watervision controls, retrofit conversions, and custom pumping systems:

1-800-356-6686

WATERTRONICS®

525 Industrial Drive Hartland, WI 53029 fax: 414-367-5551