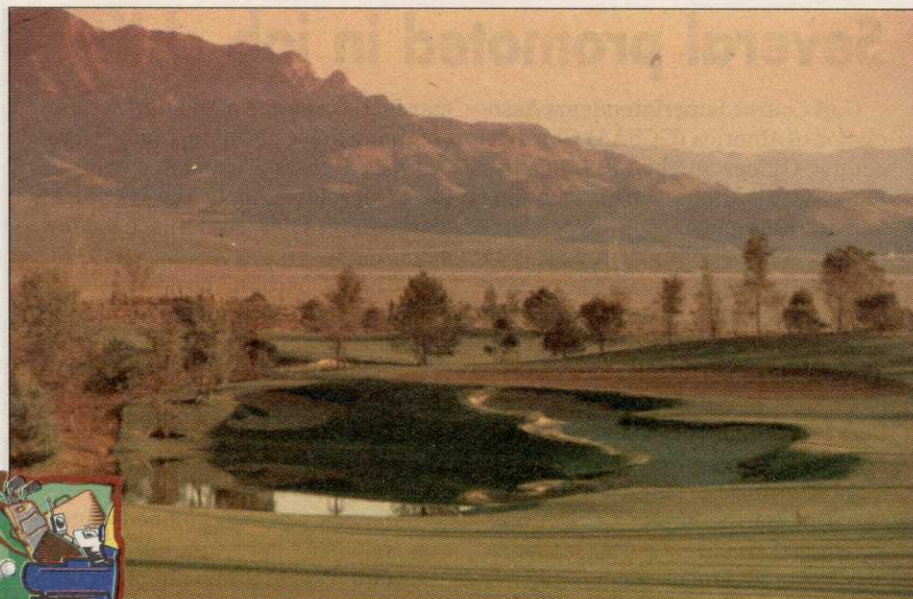


Tuggle readies Primm Valley for Jan. opening

SOMEWHERE-NEAR-JEAN, Nev. — Scott Tuggle is the new golf course superintendent here at Primm Valley Golf Club, a 36-hole Tom Fazio design developed as part of the Primadonna Resort that straddles the California/Nevada border. The first 18 holes at Primm Valley are scheduled to open in January. Tuggle arrived at Primm Valley from Westminster, Colo., where he oversaw grow-in at the award-winning Legacy Ridge Golf Course, an Art Hill design honored for its environmental sensitivity. Tuggle's greatest challenge at Primm Valley, apparently, is keeping wild burros off the beautiful but remote premises. Primm Valley will be managed by Troon Golf of Scottsdale, Ariz., developers of Troon North Golf Club.

PINEHURST, N.C. — Steve Dembnicki of Southern Pines has been named golf course superintendent for The Carolina, a new Arnold Palmer-designed



WHERE THEY'RE GOING

The 549-yard par-5 11th hole at Primm Valley Golf Club on the California/Nevada border, a 36-hole Tom Fazio design now maintained by Scott Tuggle.

golf course here. Dembnicki assumes the responsibility for all golf maintenance and turf-related issues concerning the golf course and surrounding development. A member of the Golf Course Superintendent's Association of America, the Carolina Golf Course Superintendent's Association and the Turfgrass Council of North Carolina, Dembnicki is also a gradu-

ate of the University of Maryland with a major in turf management. He brings more than 20 years of turfgrass experience with him, having served most recently as superintendent for Midland Country Club and Knollwood Golf Club, both in Pinehurst.

SANDERSVILLE, Ga. — Jerry Whitaker is the new general manager/golf course superintendent here at Twin Cities Golf Club. Whitaker arrived at Twin Cities from Georgia Veterans Golf Course. In other Peach Country moves, Dennis Echols is the new golf course superintendent at Port Armour Golf Course in Greenboro, and Paul Meredith is the new golf course superintendent at George T. Bagby State Park Golf Course in Fort Gaines.

MIDDLETOWN, Del. — Matthew D. Richter has been named golf course superintendent here at Back Creek Golf Club, designed by David Horn of Achiterra, PC of Catasauqua, Pa. This Billy Casper managed facility is scheduled to open in summer 1997. An Ohio State graduate, Richter joins Back Creek from Caves Valley in Owings Mills, Md., where he was first assistant.

MT. HOLY, N.J. — Brian Minemier, the assistant superintendent at Woodcrest Country Club in Cherry Hill, has accepted a post as superintendent at Burlington Country Club here.

Minemier was at Woodcrest for one year and was an assistant at Medford Village (N.J.) Country Club for six years prior to that. He holds a degree in agricultural sciences from Rutgers University.

APOPKA, Fla. — Jeff Heggen is the new golf course superintendent here at Errol Country Club, a facility managed by International Golf Management, Inc. (IGM), a Lakeland, Florida-based firm providing turnkey golf course maintenance services for public and private golf courses throughout the Southeast.

Heggen is responsible for complete maintenance of the 27-hole golf course and clubhouse grounds. He supervises a staff of 12, including assistant superintendent Chad Nixon.

Before being assigned to Errol CC, Heggen served as IGM superintendent at Rolling Hills Country Club in Longwood.

Hoffman taps own, others' experience in designing Classic

BRAINERD, Minn. — The Classic, an 18-hole championship golf course created at Madden's on Gull Lake, will debut as the one of the longest and most challenging courses in Minnesota when it opens to the public next year.

The Classic was designed by Madden's long-time superintendent Scott Hoffmann, assisted by golf course architect Geoffrey Cornish, Edina businessman John Harris and former Minnesota Golf Association Executive Director Warren Rebholz. Hoffmann was responsible for much of the layout and routing of the golf course. Cornish assisted with technical details such as green construction, drainage and irrigation issues. Harris and Rebholz offered advice and enhancements from a golfer's perspective.

The Classic will measure 7,109 yards from its back tees and boast a Course Rating of 74.9 and a Slope Rating of 139, ranking it among the 10 toughest courses in the state for scratch and bogey golfers as evaluated by the Minnesota Golf Association.

"We took a superb piece of land and uncovered a great golf course," said Brian Thuringer, Madden's general manager. "The Brainerd Lakes area has cultivated a reputation as a golf destination, and The Classic will enhance that position."

Built on 200 acres, The Classic's rolling topography will offer golfers dramatic elevation changes and numerous risk-reward shot opportunities from five sets of tees. Madden's placed a premium on preserving the environment and natural habitats. Very little earth was moved, and the resort partnered with the Minnesota Department of Natural Resources (DNR) to ensure the proper environmental considerations.

"The two groups worked very well together, and we never had to compromise our design goals," said Hoffmann, who has been studying the site for almost 17 years. "The DNR even made some suggestions such as creating a wetland landing area for waterfowl that enhanced the course."

Wild and native grasses are featured throughout course. Hoffmann also has initiated nutrient-absorption program that maximizes fertilizer efficacy. The course already has qualified for the Audubon Cooperative Sanctuary Program, a national program that recognizes courses for their preservation and enhancement of the environment.

SCOTTS AWARDS SCHOLARSHIPS

Lake City (Fla.) Community College student Donna Catrambone and Colorado State University student Christopher Carter have been recognized as The Scotts Co. Scholars for 1996-97.

The \$2,500 scholarships will be presented Feb. 11 during the International Golf Course Conference and Show here.

TACKLES THE NASTY SPOTS

That's The Beauty Of A National.

Trust a National's flexible, four-wheel, low, low center of gravity design to make simple work of berms, banks and bunkers — all of your course's toughest spots. Better yet, we invite you to test the rugged, hill-hugging tenacity of a National for yourself.

Call us, or your dealer today for a demo.

NATIONAL MOWER COMPANY
700 Raymond Avenue
St. Paul, Minnesota 55114
Phone: (612) 646-4079
FAX: (612) 646-2887

NATIONAL® is a registered trademark of National Mower Company.

