

For Serafin, 'twin bill' summertime openings

By MARK LESLIE

JOHNSTOWN, Ohio — "Pure golf." That's the boast at The Links at Echo Springs, a Barry Serafin-designed 18-hole public course opening in mid-June in this town 20 minutes east of Columbus.

Citing the commitment of the developers, Serafin said the project was "a tremendous opportunity to get in there and get the course done right." Golfers teeing up on the par-72, 7,000-yard track won't see it, but the wall-to-wall double-row irrigation system, abundant drainage tile, and other work was done to provide top course conditions.

"The owners wanted to back off and do the extra work and do it right," Serafin said, explaining why the front nine holes will open this month and the back nine in late fall or next spring.

The three owners also helped in the construction. While the 220 acres was the property of partner Larry Bruce, Nu-Way Construction of Johnstown performed the heavy earthwork on the course, and Van-Wey, a sand and gravel company, provided the sand.

Quality Golf of Sunbury and shaper Dan Gadd were brought on board to fine-tune the design, Serafin said.

"This is pure golf, no residential," Serafin said. The land was part dairy farm, part corn farm and part wooded. A 40-foot ravine runs through one section of the property, helping to create some dramatic holes, he said, including the 12th — a



The 7th and 9th greens at The Links at Echo Springs, designed by Barry Serafin in Johnstown, Ohio.

320-yard, par-4 demanding a second shot over the ravine.

...

At another Serafin design opening in mid-June, golfers can say their prayers in earnest before beginning their round. Chapel Hill Golf Course sits on the former site of Mount Vernon Bible College, and the clubhouse was the college chapel.

The 18-hole public facility, in the small town of Mount Vernon 40 minutes north-east of Columbus, will be surrounded by about 50 home lots, Serafin said.

"It provides more yardage than existing public courses in the area," he said. "There is a 60-foot elevation change from the low end to the high end of the course, and there are some dramatic views from some of the holes."

The par-72, 6,900-yard layout features several holes that play along a creek, a par-3 over a manmade wetland, and gently rolling terrain, half in open land and half through wooded areas.

Both courses, Serafin said, contain four sets of tees.

Muirhead's newest 'theme' design takes shape on Luzon

SUBIC BAY, The Philippines — This former American naval base on the north-east coast of the island of Luzon is site of the newest golf course from the hand of architect Desmond Muirhead.

Nestled in the low mountains overlooking a harbor, the golf course has a theme — one based on the colorful history of The Philippines.

One of the most spectacular holes is

reportedly called Sabong, or Cockfight, the national sport of The Philippines. The design also feature landscaped symbols depicting the animus, the anima, and the mandala — an ode to their coiner, Swiss psychologist Carl Gustav Jung.

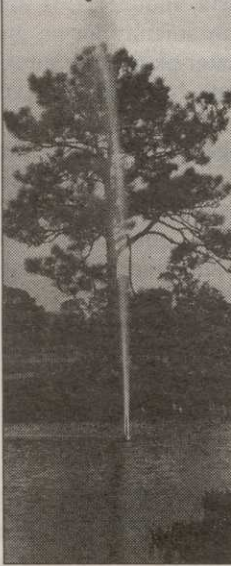
Muirhead, widely recognized as an urban planner as well as a golf architect, did the original plan for the development which will have a hotel, condominiums

and residential units in addition to a golf course.

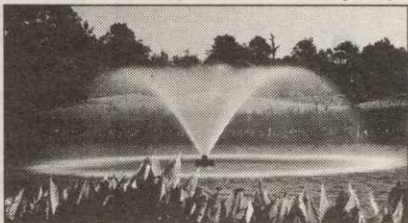
In late November, Philippine President Fidel Ramos will host President Clinton and 16 other heads of state of the Asian Pacific Economic Cooperation (APEC) who will meet at Subic Bay.

The head officials of APEC are slated to play the new golf course during their meetings.

Decorative Geyser Fountains:
heights to 60 ft.



Aerator Fountains: capacities to 1,500,000 gal/day



If your pond or lake
is more than 12" deep,
you need

AQUA CONTROL®

- ★ The **only** Aerator Fountains built with a standard water intake that reaches down deep below the surface to aerate **all** levels in your pond or lake.
- ★ The **only** Aerator Fountains that use low-cost, interchangeable components so you can switch from an aerator fountain ... to a decorative fountain ... and back to an aerator fountain **any time you wish.**

Popular sizes from 1/2 to 5 hp.

AQUA CONTROL, INC.
1-800-377-0019

Call us for more
information:

YORK
BRIDGE CONCEPTS
The Professional Bridge Company

**ON SITE
TIMBER
CONSTRUCTION**

- Custom Design & Build Service
- 3 Year Warranty
- Treated Southern Pine or Douglas Fir
- Custom Wetlands Crossings
- Timber Shelters

**why does it have
to be a
STRAIGHT line?**

Nationwide: (800) 226-4178 or <http://www.ybc.com>
Member NGCOA - NGF - GCBAA - GCSAA

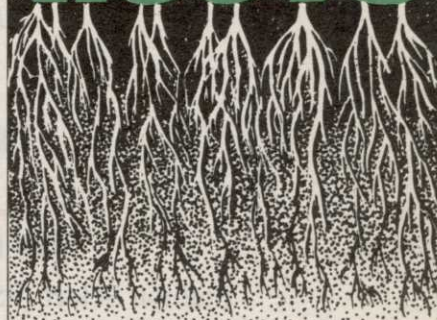
Sea Village adds 9

THE SEA RANCH, Calif. — Sea Ranch Village Inc. is close to completion of the additional nine holes of golf at The Sea Ranch Golf Links, a links-style layout on the wild Sonoma Coast of northern California. Sea Ranch officials said they expect the new nine holes will be open early this month.

The project completes the original layout designed by architect Robert Muir Graves in 1964. The new par-72, 18-hole Sea Ranch will measure 6,800 yards. As a nine-hole course, the original nine-hole Sea Ranch Golf Links, with an index of 73.5 and a slope rating of 133 from the back tees, was rated by Golf Digest as one of the top five nine-hole courses in the world.

Regal Crown®

**DEEPER
ROOTS**



MINIMIZE DRY WILT AND WINTER DESICCATION

Golf Course Superintendents, Turf Grass Managers, Sod Grass Growers and Nurserymen are praising the results of Regal Crown.

Regular use of Regal Crown root growth stimulator exhibits phenomenal results. Turfgrass types such as bermuda, bent, zoysia and others develop more roots that are healthier and penetrate deeper. More roots imbedded deeper into the soil means better nutrient and moisture up-take creating thicker, greener tops.

Regal Crown is a blend of hormones specifically designed to promote root growth in turfgrasses and ornamentals. Used regularly, Regal Crown roots can minimize hot weather dry wilt stresses and winter desiccation.



Regal Chemical Company
P.O. BOX 900 / ALPHARETTA, GA 30239
PHONE 404-475-4837 / 800-621-5208