



# Construction continues at a strong pace in region

**SAIPAN** — The routing plan has been completed and the developer is clearing up some final details, allowing construction to begin on a new, 36-hole development here at Objan Beach.

Jay Morrish has designed the first 18 holes for developer Haas and Haynie Inc. of San Francisco.

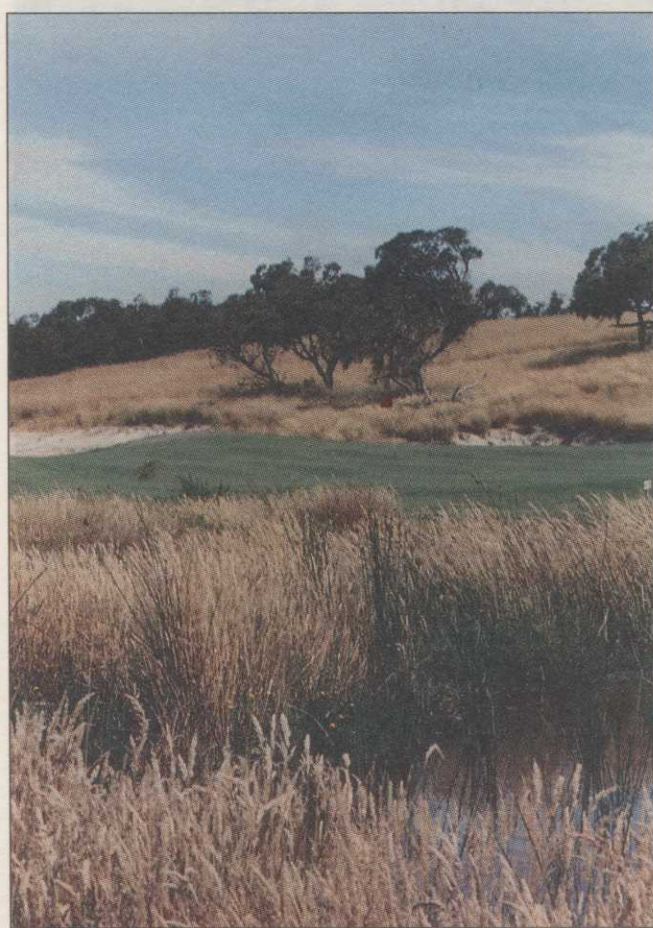
Located on the southern part of the island, the site includes four miles of oceanfront and 200-foot cliffs, according to son Carter Morrish.

Morrish has worked with Haas and Haynie on several other projects including recently completed Saddle Creek in Stockton, Calif. Haas and Haynie has also developed two other U.S. courses, Genoa Lakes in Reno, Nev., and Estancia in Scottsdale, Ariz.

**FUZHOU, China** — The first nine holes here at Trans Strait Golf Club will open this fall or early in 1997, according to Robert Trent Jones II International which designed the course.

Developed by Liu and Associates of Taiwan, Trans Strait stretches over 185 acres of wind-swept dunes and trees, and boasts four holes sitting atop high bluffs overlooking the Taiwan Strait.

A resort course, it will offer individual memberships as well as tee times to area hotel guests, according to Doug



**NATURAL LOOK**

*Native grasses and scrub flora frame the fairways at Fleurieu Golf Club in Adelaide, South Australia. Designed by Golf Strategies, Inc., Fleurieu GC is one of several courses the Adelaide-based firm has under construction. Fleurieu GC plans a soft opening of this nine around the end of the year. The first nine is in play and has drawn favorable responses from golfers, according to Golf Strategies' Neil Crafter. Meanwhile, Golf Strategies is also designing projects in Sarawak and Seremban, Malaysia.*

Ingram, RTJII's vice president of design and construction activities. Once the first holes are in play, the second nine will open six months later, Ingram said.

The site is "unbelievable — like Pebble Beach but with intermittent stands of trees," said RTJII's Steve Schroeder.

"With as much wind as they get, a lot of design elements had to be done — wider landing areas, more open-entry greens and slightly larger putting surfaces," Ingram said. "You get a real variety of views: the sea, a large nearby lake and back up into the land through stands of trees."

**JAKARTA, Indonesia** — What is being touted as the first public signature course in Indonesia has opened for play. Green fees at Desmond Muirhead-designed Imperial Klub Golf are Rp130,000 for 18 holes.

"Imperial Klub Golf is a unique golf course designed to cater to an increasing number of golfers who are not always in a position to afford expensive member-

Continued on next page

# TRUE-SURFACE<sup>(R)</sup> TIPS Grow-in

Use the TRUE-SURFACE<sup>(R)</sup> Vibratory Greens Rolling System to settle the surface of new greens. Vibration allows new greens to be in playing condition **45 DAYS** earlier. Walk mowers were not used and greens were firm and smooth enough to use triplex mowers.

Call for free University analyses and our Demo Program.



1-800-443-8506

U.S. Patent No. 5,261,213. Foreign Patents Pending

TRUE-SURFACE<sup>(R)</sup> fits most triplex greens mowers.

## Introducing the new thinner, sleeker Verti-Drain<sup>®</sup>

The new model 205.150 trimmed down version is a beauty to behold. At only 60 inches working width it easily fits through gates, over bridges and in all sorts of tight areas, including your budget. Built with the same integrity you've come to expect from Verti-Drain. All this and it still goes 16 inches deep, proving once and for all that beauty is thin-deep.



**VERTI-DRAIN<sup>®</sup>**  
Works like a pitchfork, only better.

Emrex, Inc., Box 1349, Kingston, PA 18704 (717) 288-9360