

CALENDAR

September

7-8 — Southwest Horticultural Trade Show in Phoenix, Ariz. Call 602-966-1610.

7-10 — RISE Annual Meeting in Arlington, Va. Contact 202-872-3860.

9-12 — America Society of Irrigation Consultants Annual Conference in Atlanta. Contact Wanda Sarsfield at 510-516-1124.

9-12 — Club Managers Association of America Leadership/Legislative Conference in Pentagon City, Va. Contact Kathi Driggs at 703-739-9500.

12-13 — Turfgrass Research Conference and Field Day and Landscape Management Research Conference and Field Day in Riverside, Calif. Contact Susana Denney at 909-787-4430.

17-19 — Southeastern North Carolina Professional Turfgrass Conference in Sunset Beach, N.C. Contact Dr. Bruce Williams at 910-253-4425.

19-21 — Virginia Tech Turf and Landscape Field Days in Blacksburg, Va. Contact David Chalmers at 703-231-9738.

24-27 — Florida Turf Assn Annual Conference & Show in Tampa, Fla. Contact Susan Callahan at 800-882-6721.

October

7-10 — American Society of Landscape Architects in Cleveland. Contact Mindy Peckham at 202-686-2752.

9-12 — 49th Northwest Turfgrass Conference in Stevenson. Contact 360-754-0825.

11 — West Texas Turfgrass Conference in Snyder, Texas. Contact Pam Deeds at 806-354-8447.

31 — The Carolinas Golf Investment Seminar in Pinehurst, N.C. Contact Andy Hinds at 910-379-1400.

November

4 — 6th Annual Rutgers Professional Golf Turf Management School and Alumni Awards Banquet in East Brunswick, N.J. Contact 908-828-6900.

4-7 — Georgia GCSA Annual Meeting at Jekyll Island. Contact Karen White at 706-769-4076.

9-10 — Golf Course Expo in Orlando, Fla. Contact Golf Course News Conference Group at 207-846-0600.

13-15 — Women in Golf Summit '95 in Pinehurst, N.C. Contact 904-254-8800.

* For more information contact the GCSAA Education Office at 913-832-4430.

Verti-drain suit

Continued from page 39

were going to sue.

"There was no patent infringement here. We researched it very carefully. This is strictly a sales ploy by Redexim."

According to Estes, Southern Green ended its relationship with Redexim in 1993. The firm put its Soil Reliever on the market in 1994, he said.

The Verti-Drain product line is represented in North America by Emrex, Inc., an independent importer, and a national network of more than 30 distributors. According to Charles Otto, president of Emrex, Redexim caught wind of the Soil Reliever's emergence and sent Southern Green a cease and desist order in October 1994, on the basis that it was a copy.

"On Nov. 4, the folks at Southern Green literally raced to the courthouse and filed a suit," said Otto. "Instead of responding to the cease and desist, they filed a suit which said, basically, that 'Redexim is trying to ruin our business.'"

According to Otto, in May of 1995, Redexim tried to have the Southern Green suit dismissed. However, a dismissal judg-

Continued on next page

Golf Course Marketplace

To reserve space in this section, call Diana Costello-Lee, 207-846-0600

POND & LAKE LINERS

- ◆ Buy Direct from fabricator 20, 30, 40 mil PVC, Hypalon, HDPE, & VLDPE.
- ◆ Custom fabricated panels of up to 25,000 S.F. available.
- ◆ Material Only, Material & Supervision, or Complete Installation service.

1-800-524-8672

Colorado Lining Company, 1062 Singing Hills Road, Parker, CO 80134. 303-841-2022 Fax 303-841-5780

CIRCLE #150

HARCO DUCTILE IRON FITTINGS FOR GOLF COURSE IRRIGATION SYSTEMS

Sizes 2" through 12", all configurations including "knock-on" repair couplings. High Strength, high corrosion resistance.

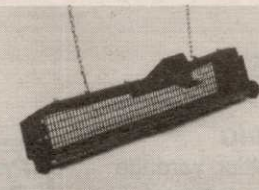
The Harrington Corporation
P.O. Box 10335
Lynchburg, Va 24506
804-845-7094 Fax 845-8562



CIRCLE #152

GET THE ROCKS OUT...

and the pine cones, and other debris. The Sand Trap Renovator comes in 2 hand sizes: 12" wide (#511) and 24" wide (#512) and one machine size 4' wide for use with the TORO 5000, JOHN DEERE 1200, and Smithco units (#555). Insert hardware cloth for smaller particles.



Ask Your Golf Course Distributor for INNOVATIVE MAINTENANCE PRODUCTS

From

Master of the Links

P.O. Box 283, Lockport, IL 60441-0283
(815) 723-4444 • Fax (815) 723-4485



CIRCLE #154

P. O. Box 806
201 40th St. NE

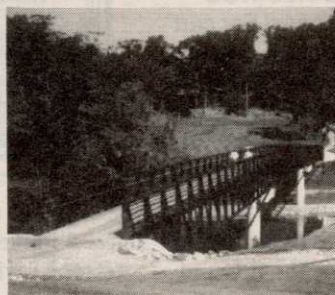
FORT PAYNE, AL
35967

STEADFAST BRIDGES

"CROSSING THE NATION WITH BRIDGES YOU CAN DEPEND ON"

ENGINEERED AND FABRICATED TO FIT YOUR GOLF COURSE NEEDS, FROM THE CONNECTOR (PICTURED) TO THE ORIENTAL "EDO" SERIES. PEDESTRIAN, GOLF CART AND VEHICULAR BRIDGES. SINGLE SPANS TO 200 FEET AVAILABLE.

CALL TODAY FOR FREE BROCHURES
1-800-749-7515



LANCASTER COUNTRY CLUB, LANCASTER, PA

CIRCLE #156

Exceptional Software...

SCMS

Superintendents
Compliance /
Management
System

"The Choice of Today's Grounds Managers"

From Equipment Tracking and Employee Training...
To Compliance Reports and Chemical Records

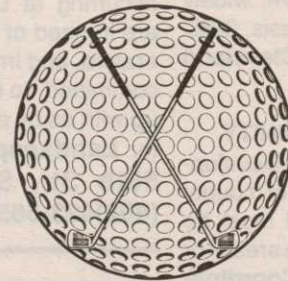
Free Demonstration Diskettes
Call Toll Free (800) 472 8882

Environmental Compliance Systems, Incorporated
21 North Avenue Lake Forest IL 60045

CIRCLE #158

Formost Construction Co.

Serving the nation for over 30 years.



IRRIGATION SPECIALISTS

"Doing One Thing Well"

P.O. BOX 559
TEMECULA, CALIFORNIA 92593

(909) 698-7270

FAX (909) 698-6170

STATE LIC. #267960

CIRCLE #151

ACCU-GAGE™

NEW!
LIFETIME WARRANTY
ON BARS WITH
DURA-COAT™



ACCU-GAGE is a precision tool for making highly accurate height-of-cut measurements on greens mowers or other precision mowers.

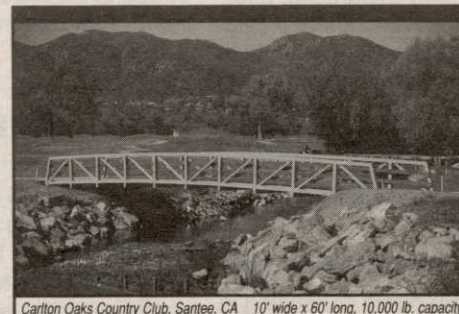
AVAILABLE IN 15", 18", and 24" bars.

Our LIGHTWEIGHT and RIGID aluminum bars are now treated with DURA-COAT. DURA-COAT wears better than tool steel and enables us to offer this unique LIFETIME WARRANTY.

To order call 1-800-253-2112 or fax 1-313-429-3985.

PRECISION TOOL PRODUCTS CO.
7836 Bethel Church Rd. • Saline, MI 48176

CIRCLE #153



Carlton Oaks Country Club, Santee, CA 10' wide x 60' long, 10,000 lb. capacity

EXCEL

BRIDGE MANUFACTURING CO.

Golf Course Bridges are our specialty! We fabricate easy-to-install, pre-engineered spans and deliver them anywhere in the USA. Call today for a free consultation.

Our classic design, with a look that stands the test of time.

800/548-0054 (Outside CA)

12001 SHOEMAKER AVENUE, SANTE FE SPRINGS, CA 90670
310/944-0701 • FAX 310/944-4025

CIRCLE #155

Slow Play is Not Caused by Slow Golfers - It's a Management Decision.

A poorly marked course slows play. Isn't it time you made the management decision that increases revenue and golfer satisfaction?



The Kirby Marker System

800-925-4729 • 619-931-2624

CIRCLE #157

Featuring CERTIFIED

MEYER Z-52 ZOYSIA

- EL TORO ZOYSIA
- TALL FESCUE
- TIFWAY II
- TIFTON 419
- TIFDWARF
- MIDLAWN

1-800-666-0007

QUAIL VALLEY FARM

"Of course we're playing on Quail Valley!"



P.O. BOX 5508
LITTLE ROCK, AR 72215

CIRCLE #159