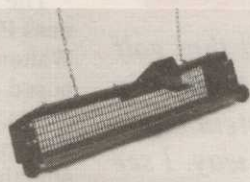


# Golf Course Marketplace

To reserve space in this section, call Diana Costello-Lee at 207-846-0600

## GET THE ROCKS OUT...

and the pine cones, and other debris. The Sand Trap Renovator comes in 2 hand sizes: 12" wide (#511) and 24" wide (#512) and one machine size 4' wide for use with the TORO 5000, JOHN DEERE 1200, and Smithco units (#555). Insert hardware cloth for smaller particles.

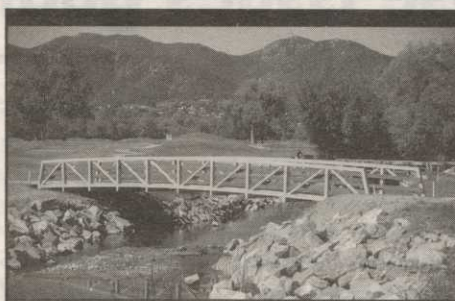


Ask Your Golf Course Distributor for  
INNOVATIVE MAINTENANCE PRODUCTS

From *Master of the Links*

P.O. Box 283, Lockport, IL 60441-0283  
(815) 723-4444 • Fax (815) 723-4485

CIRCLE #178



## EXCEL

BRIDGE  
MANUFACTURING CO.

Golf Course Bridges are our specialty! We fabricate easy-to-install, pre-engineered spans and deliver them anywhere in the USA. Call today for a free consultation.

Carlton Oaks Country Club, Santee, CA 10' wide x 60' long, 10,000 lb. capacity

Our classic design, with a look that stands the test of time.

800/548-0054 (Outside CA)

12001 SHOEMAKER AVENUE, SANTE FE SPRINGS, CA 90670  
310/944-0701 • FAX 310/944-4025

CIRCLE #179



## PAVELEC BROTHERS GOLF COURSE CONSTRUCTION CO., INC.

- ✓ New Construction
- ✓ Renovation
- ✓ Field Drainage Systems

TONY PAVELEC (201) 667-1643  
EMIL PAVELEC (201) 939-6182  
98 Evergreen Ave.  
Nutley, NJ 07110

CIRCLE #180

## LAMINATED WOOD SHELTERS & BRIDGES



PEDESTRIAN & VEHICULAR

Order Direct From The Leading Manufacturer in U.S.

- Complete Prefabricated Packages
- Ready for Fast Erection
- Direct Distribution Throughout the U.S.
- Custom Design & Engineering



CALL 800-777-8648

P.O. Box A • Morrisville, NC 27560  
Tel. 919/467-6155 • FAX 919/469-2536

CIRCLE #182

## ENGRAVED YARDAGE LABELS

- Bright Colors • Fasteners included
- Orders quickly shipped UPS **Free Samples!**

## NEW ITEM... "THE SOLUTION"

For Areas Without Sprinklers.  
Put Your Message Plus Yardage  
Anywhere: Hazard Points,  
Tees, Practice Ranges.

**YARD EDGE GOLF**  
1-800-284-9273



P.O. Box 13159  
Wichita, KS 67213

CIRCLE #184

## POND & LAKE LINERS

- ◆ Buy Direct from fabricator 20, 30, 40 mil PVC, Hypalon, HDPE, & VLDPE.
- ◆ Custom fabricated panels of up to 25,000 S.F. available.
- ◆ Material Only, Material & Supervision, or Complete Installation service.

1-800-524-8672

Colorado Lining Company, 1062 Singing Hills Road,  
Parker, CO 80134. 303-841-2022 Fax 303-841-5780

CIRCLE #181

## TRIMS The Worlds Most Popular Grounds Management Software

### NEW TRIMS VERSION 3.1 INCLUDES:

- ☑ Budgets & Expenses Tracking
- ☑ Equipment Maint. & Work Orders
- ☑ Inventory, PO's & Fuel Reporting
- ☑ Chemical & Fertilizer Records
- ☑ Personnel & Labor Activity Records

### OPTIONAL FEATURES:

- ☑ TRIMS DrawView for site plans
- ☑ Tree Inventory
- ☑ Extended Memory Support
- ☑ Electronic Pesticide Ref / T&O
- ☑ Custom Report Writer
- ☑ Multi-User and Site Licenses

### TRIMS Software International

3110 N. 19th Avenue - Suite 190  
Phoenix, AZ 85015  
(800) 608-7467 - (602) 277-0067

Call for your FREE DEMO diskette & indicate 5 1/4" or 3 1/2"



CIRCLE #183

## HARCO DUCTILE IRON FITTINGS FOR GOLF COURSE IRRIGATION SYSTEMS

Sizes 2" through 12", all configurations including "knock-on" repair couplings. High Strength, high corrosion resistance.

The Harrington Corporation  
P.O. Box 10335  
Lynchburg, Va 24506  
804-845-7094 Fax 845-8562



CIRCLE #185

## LIST RENTAL

## GOLF COURSE NEWS

THE NEWSPAPER FOR THE GOLF COURSE INDUSTRY

...offers you the opportunity to reach the decision makers at thousands of golf facilities with an exclusive mailing list.

Call Diana Costello-Lee for details

207-846-0600



Nationwide delivery • Install in less than two hours

## Golf Course Bridges!

1-800-328-2047

Thousands in use. Built to last.  
Sponsor Member  
**CONTINENTAL  
BRIDGE**

Route 5, Box 178, Alexandria, MN 56308 • (612) 852-7500



CIRCLE #186

## ADVERTISERS' INDEX

Cir. #	Advertiser	page
132	18th Green Bent Grass	36
141	American Cyanamid	47
140	Ametek	46
128	Anderson Instruments	32
106	The Andersons	8
158	The Andersons	65
137	Aquatrols	41
134	Aquatrols	37
114	BASF	17
129	Canaan Industries	32
111	Ciba	14
104	Ciba	4-5
181	Colorado Lining Co.	69
186	Continental Bridge	69
182	Enwood Structures	69
179	Excel Bridge Mfg.	69
110	Flowtronex/PSI	13
120	Fore Par	24
124	Forestry Suppliers	28
171	Formost Construction Co.	68
125	Fox Valley Systems	28
—	Golf Course Expo	60
136	Griffin Industries/Nature Safe	40
142	Growth Products	48
117	Har-Tru Corporation	20
185	Harrington/Harco Corporation	69
130	Hickson Kerley	33
—	ISK Biosciences Corp.	(insert)
108	Jacklin Seed Co./Jacklin Golf	10
163	Jacobsen	72
115	Jacobsen	18-19
174	Jesco Products/Pinhigh	68
105	John Deere	6-7
176	JPF Distributors	68
139	Kalo	44
152	Kirby Markers	58
122	Lofts, Inc.	25
178	Master of the Links	69
131	Miles Inc.	34-35
153	Milorganite	59
—	National Golf Foundation	52
161	Partac	28
180	Pavelec Bros. Construction	69
118	Pennington Seed	21
155	Pennington Seed	62
173	Precision Small Engine	68
175	Precision Small Engine	68
170	Precision Tool Prod. Co.	68
172	Quail Valley Turf Farm	68
157	Ransomes, Ransomes America Corp.	64
145	Regal Chemical	51
116	Regal Chemical	20
151	Regal Chemical	58
127	Regal Chemical	31
162	Rohm & Haas	71
135	Rohm & Haas	38-39
138	Rohm & Haas *	42-43
149	Romtec	56
119	Sandoz	22-23
126	Seed Research of Oregon	30
109	Smithco	11
121	Southern Corp. Promo.	25
143	Standard Golf	49
177	Steadfast Bridge Co.	68
113	Tee & Green Sod	16
101	Tee-2-Green	2
102	The Thinking Supt./GolfLink	3
133	The Thinking Supt./GolfLink	36
144	Toro Comm'l. Prod. Div.	50
123	Toro Comm'l. Prod. Div.	26-27
183	Trims International Software	69
103	Turflite, Inc.	3
150	Ty-Crop	57
107	United Horticultural Supply	9
159	United Horticultural Supply	66
112	United Soil Blenders	16
148	Valent	54
156	Verti-Drain/Emrex	63
160	Warren's Turf Professionals	70
169	Yamaha *	42-43
184	Yard Edge	69
146	York Bridge Concepts	52

\* Appears in regional editions.

## GCSAA in Asia

Continued from previous page

because you are able to do more things. The level of involvement, communication and planning goes up. It's good, but you can't do that without redirecting resources."

Mona said the 1995 GCSAA Show, held in San Francisco, was an unqualified success. He added that corporate-sponsored events — which GCSAA accepted for the first time — were well received.

"We got very good reviews on the corporate involvement in the San Francisco show," he said. "We're taking that as a mandate that we can continue with them."

"If we had received a hue and cry from our members, our attitude would be different. We don't want to offend the sensibilities of our members. But because we got good reviews, I feel comfortable saying we have a clear mandate to continue and look at other opportunities."