

BRIEFS



CLAYTON PROMOTED AT SANDOZ

DES PLAINES, Ill. — Sandoz Agro, Inc. has named Gary Clayton business manager, turf and ornamental products, within the company's Specialty Business Unit. Clayton was most recently business manager for the company's mosquito control and ornamentals products. Clayton's experience includes positions as VP of operations for Perma-Green; director of technical services for the Professional Lawn Care Association of America; turf and ornamental market manager for PBI Gordon; and turf distributor sales representative for Pro Turf Specialties.

SEARIGHT TO MANAGE SRO-DALLAS

CORVALLIS, Ore. — Seed Research of Oregon, Inc. has appointed Pat Searight area manager for the Dallas, Texas, operation.



Pat Searight

He will be responsible for sales of Seed Research's cool- and warm-season grass seed program in Central Texas. Searight has a bachelor's degree in agronomy with a turfgrass management specialty from Texas A&M. Prior to joining Seed Research, he was an instructor with Texas State Technical College and formerly held several golf course superintendent positions.

DUFFY MOVES UP AT GOULDS PUMPS

SENECA FALL, N.Y. — Richard C. Duffy of the Water Technologies Group at Goulds Pumps, Inc., has been named staff vice president-corporate development reporting to Thomas C. McDermott, president and chief executive officer. Duffy began his 24-year career in the pump industry with Morris Machine Works of Baldwinsville, N.Y., later acquired by Goulds in 1981. In 1984, he held the position of marketing manager for the Texas Division, in Lubbock, then a similar post for the G&L commercial business at the Water Systems Division here.

EPA OKs HIGHER RATES FOR ALAMO

WASHINGTON, D.C. — The Environmental Protection Agency has registered new, higher rates for Alamo fungicide for applications through pressurized injection equipment. For preventative treatments, six milliliters of Alamo should be used. The new label also recommends a 10-milliliter rate for curative treatments. Alamo is Ciba Turf & Ornamental's tool for control of oak wilt and Dutch elm disease.

Decision to Pennington; feds pay up

By MARK LESLIE

MADISON, Ga. — A struggle that dragged on for six years has come to a close, with the U.S. Treasury reimbursing Pennington Enterprises, Inc. \$250,000 for losses stemming from a government blunder.

"Vindication was uppermost in my mind. We were not at fault," said the seed company's president, Brooks (Sonny) Pennington. "The real sad part is that we taxpayers paid all those government lawyers for six years and then had to pay \$250,000 because of one man's mistake."

The snafu Pennington referred to involved U.S. Department of Agriculture inspectors allowing 2 million pounds of weed-infected Argentine tall fescue grass seed into the country on Nov. 17, 1988. Unknown to Pennington and six other American companies, the shipment contained a noxious weed, serrated tussock. By the time the USDA demanded the

Continued on page 65

Packaging prices continue to rise

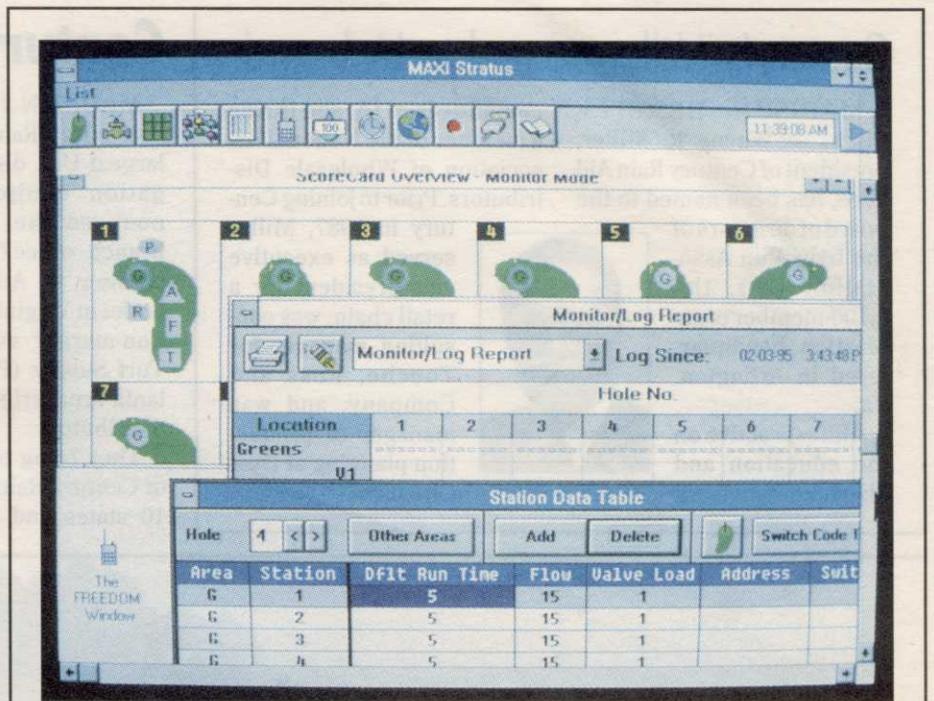
By LYNN GROOMS

If you have purchased multiwall bags or polyethylene film recently, you have noticed some dramatic price increases. And, it's not over yet, according to sources in the packaging business.

Harley Sasse of Greif Bros. in Rosemount, Minn., reports that major paper manufacturers have announced another price increase of \$50/ton. Sasse noted that seed bag prices have already increased 20 percent over last year.

Given the current high demand for paper, including liner-board used to make fiber drums and corrugated box packing, not to mention the near capacity production situation for manufacturers, Sasse

Continued on page 63



NEW PRODUCT OF THE MONTH

Rain Bird's Golf Division has unveiled Maxi for Windows computer-based irrigation control system. Designed to run on Microsoft Windows operating software, Maxi for Windows provides superintendents with a system that is versatile, easy to use and competitively priced. With Maxi for Windows the super can manage all irrigation applications without extensive training, via the Maxi Quick Start initialization and start-up program, which also helps the superintendent build an initial irrigation program. Because the system operates on the Windows program, it can simultaneously manage up to 50 irrigation schedules, generate spreadsheets, compile government-required reports, conduct word-processing functions and plan future irrigation needs. For more information, call Rain Bird at 818-543-3589. For more new products, see page 66.

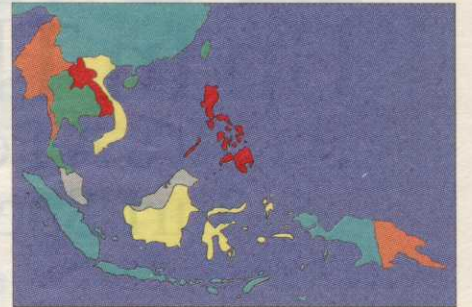
GCSAA bags Asian exhibit sales duties

By HAL PHILLIPS

SINGAPORE — In keeping with the "America First" campaign it initiated some 18 months ago, the Golf Course Superintendents Association of America (GCSAA) has severed the exhibit sales portion of its relationship with Golf Asia, the industry trade show held here annually.

The superintendents association's former partners in Golf Asia — Singapore-based Connex Private Ltd. and Cleveland, Ohio-based International Management Group (IMG) — will continue to manage the trade show. IMG's Chris Roderick reported that 60 to 70 percent of this year's exhibitors have already reserved booth space for Golf Asia '96.

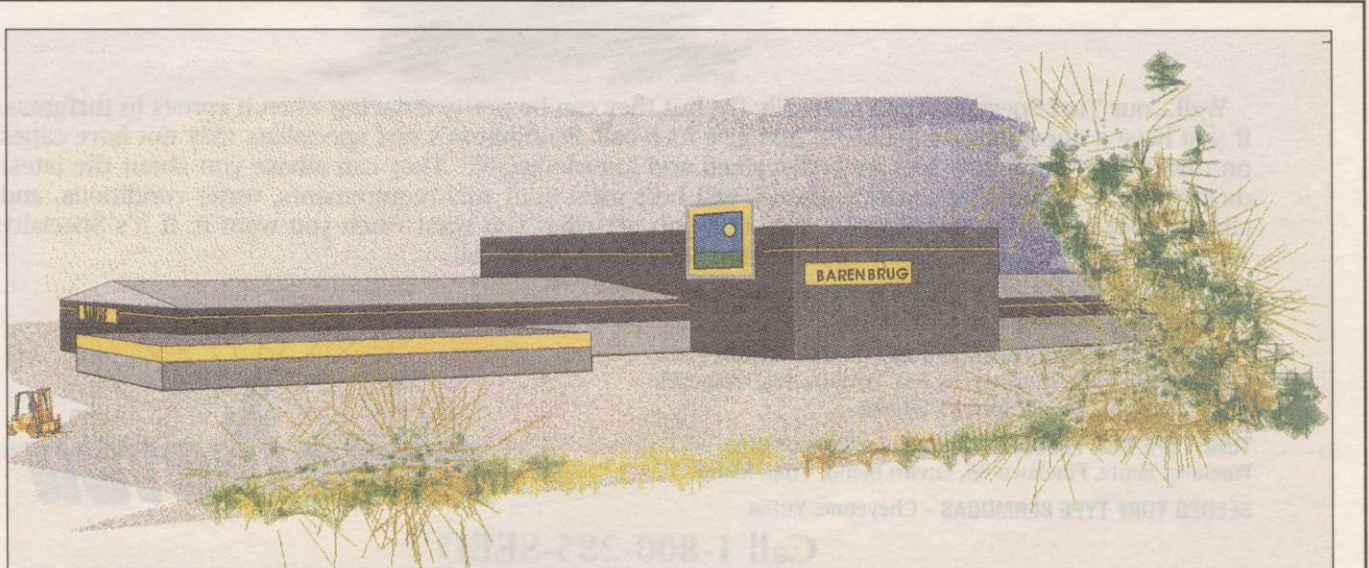
The superintendents association will, however, continue to conduct Golf Asia's education sessions, said GCSAA Chief Executive Officer Steve Mona, who added that his organization broke even financially on Golf Asia '95, held March 23-26. "We won't sell space at all next year,"



Mona explained. "It's really pretty simple: We're going to concentrate on some specific mandates. We want to apply ourselves to those goals. Our involvement on the exhibit side of an international show doesn't meet that mandate."

"There are no hard feelings between us and IMG. We've been discussing this for some time. We will have our own booth there [Golf Asia '96]. We will be present, run the education sessions and man the booth. We're going to concentrate on pro-

Continued on page 68



A NEW HOME FOR BARENBRUG USA

TANGENT, Ore. — Barenbrug USA has entered the first stage of construction on its new facility. Located on approximately 12 acres of land just south of the Highway 34 overpass on 99W here, the finished product will eventually accommodate more than 100,000 square feet of production, warehouse, shipping and office space. As you can see, the exterior design will incorporate the worldwide Barenbrug colors and logo. Completion of the entire project is projected in about 18 months. In other Barenbrug news, Michael Thomas has been chosen to fill the position of field representative.

May

6 — *Golf Range Development Seminar in San Francisco.* Contact Forecast Golf Group at 804-379-5760.
 6-8 — *Turf and Ornamental Communicators Association Annual Meeting in Chicago.* Contact 612-894-2414.
 24 — *GCSAA Technician Training for Equipment Managers in Lake City, Fla. **

June

12 — *Midwest Regional Turf Foundation Sports Field Workshop in Huntington, Ind.* Contact 317-494-8039.

July

25 — *Midwest Regional Turf Foundation Regional Turf Field Day in West Lafayette, Ind.* Contact 317-494-8039.
 26 — *University of Georgia Turfgrass Field Day in Griffin, Ga.* Contact 404-228-7300.

August

6-8 — *Georgia GCSA Summer Conference at Sea Palms Resort on St. Simons Island.* Contact Karen White at 706-769-4076.
 16 — *Ohio Turfgrass Foundation Field Day in Columbus, Ohio.* Contact Julie Guenther at 614-261-6750.

September

7-8 — *Southwest Horticultural Trade Show in Phoenix, Ariz.* Call 602-966-1610.

November

4-7 — *Georgia GCSA Annual Meeting at Jekyll Island.* Contact Karen White at 706-769-4076.
 7-10 — *Turf and Grounds Exposition in Rochester, N.Y.* Contact 800-873-TURF.
 9-10 — *Golf Course Expo in Orlando, Fla.* Contact Golf Course News Conference Group at 207-846-0600.

13-15 — *Women in Golf Summit '95 in Pinehurst, N.C.* Contact 904-254-8800.
 14-16 — *Midwest Regional Turf Foundation Turfgrass and Ornamental Seminar in Lafayette, Ind.* Contact 317-494-8039.

December

4-7 — *26th Annual Georgia Turfgrass Conference and Trade Show in Atlanta.* Contact 404-228-7300.
 5-8 — *Ohio Turfgrass Foundation Conference and Show in Columbus, Ohio.* Contact 614-261-6750.

* For more information contact the GCSAA Education Office at 913-832-4430.

GCSAA in Asia

Continued from page 61
 viding education, which went very well this year."
 Three years ago, GCSAA and then-Executive Director John Schilling actually staged its own trade show here in direct competition with Golf Asia. That was the peak of GCSAA's overseas involvement. Since late 1993, when Schilling abruptly resigned, the domestic membership has been calling for GCSAA to concentrate on U.S. programs. The organization has definitely responded by limiting its role in Golf Asia the last two years and folding its foreign language publications.

"The fact that we're sticking with the education [at Golf Asia] says we're going to concentrate on education when it comes to overseas endeavors," said Mona. "As you can appreciate, our U.S. show is our big deal and we want our folks focused on the task at hand. We have our sights set on 20,000 [for Orlando '96] and 600 for the golf tournament. We want our people to concentrate on it.

"When you do corporate-sponsored events, they take on a life of their own. Sponsors have expectations and the details of the entire event go up exponentially

Continued on next page

Golf Course Marketplace

To reserve space in this section, call Diana Costello-Lee at 207-846-0600

BENCH-PLATE™

... a Precision Tool for Precision Mowing

The bench plate is a utility surface plate, with an attached parallel bar for use in setting putting greens mower rear roller parallel with the reel. The oversized model is useful for making adjustments on larger mowers. Model #006 measures 12" x 24", oversized model measures 24" x 36". To order call 1-800-253-2112 or FAX 1-313-429-3985.

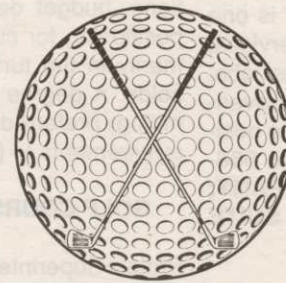


PRECISION TOOL PRODUCTS CO.
 7836 Bethel Church Rd. • Saline, MI 48176

CIRCLE #170

Formost Construction Co.

Serving the nation for over 30 years.



IRRIGATION SPECIALISTS

"Doing One Thing Well"

P.O. BOX 559
 TEMECULA, CALIFORNIA 92593

(909) 698-7270

FAX (909) 698-6170

STATE LIC. #267960

CIRCLE #171

Score a

HOLE IN ONE

with a

Classified Display Ad

like this one in

GOLF COURSE MARKETPLACE

For details, call Diana Costello-Lee today at

(207) 846-0600

Featuring **CERTIFIED** **MEYER Z-52 ZOYSIA**

- EL TORO ZOYSIA
- TALL FESCUE
- TIFWAY II
- TIFTON 419
- TIFDWARF
- MIDLAWN

1-800-666-0007

"Of course we're playing on Quail Valley!"

QUAIL VALLEY FARM

P.O. BOX 5508
 LITTLE ROCK, AR 72215

CIRCLE #172

Inside Info

Get the jump on your competition by subscribing to the *Golf Course News Development Letter*

This twice-monthly newsletter...

- tracks golf course projects under consideration across the nation
- is packed with news items detailing where and when projects will be undertaken, and by whom
- is just \$195 for a year's subscription

For more information contact Editor Peter Blais at 207/846-0600

NEW!

Flymo GCT 12

Sale Price \$369.95 Powerful 50cc engine
SAVE \$100 Lightweight unit, 15 lbs.
 Fast 12" cutting width

SEE US IN SAN FRANCISCO, BOOTH #6813

PRECISION SMALL ENGINE CO. INC. 1-800-345-1960
POMPANO BEACH, FL

CIRCLE #173

Quality with a Twist

A twist of our easy off lid gives you quick access to Pinhigh's quality reel sharpening compound.

pinhigh
 reel sharpening compound

Call 1 (800) 422-4748



CIRCLE #174

Golf Car Parts

Lowest prices guaranteed on more than 1700 quality replacement parts! Shipped air freight at no extra charge. Call for your **FREE** catalog today!



Call us today **1-800-345-1960** **PRECISION SMALL ENGINE CO. INC. POMPANO BEACH, FL**

CIRCLE #175

DIRTY BIRDS a PROBLEM??

Scare them away with harmless, **APPROVED, ENVIRONMENTALLY SAFE BIRD CONTROL NOISEMAKERS**

UNIQUE, MORE DISCREET PRODUCTS ESPECIALLY FOR GOLF COURSES near residential areas are available.

We CAN help solve your bird problems. CALL TODAY: 1-800-582-8843 JPF Distributors

CIRCLE #176

P. O. Box 806 201 40th St. NE FORT PAYNE, AL 35967



"CROSSING THE NATION WITH BRIDGES YOU CAN DEPEND ON"

ENGINEERED AND FABRICATED TO FIT YOUR GOLF COURSE NEEDS, FROM THE CONNECTOR (PICTURED) TO THE ORIENTAL "EDO" SERIES. PEDESTRIAN, GOLF CART AND VEHICULAR BRIDGES. SINGLE SPANS TO 200 FEET AVAILABLE.

CALL TODAY FOR **FREE** BROCHURES **1-800-749-7515**



LANCASTER COUNTRY CLUB, LANCASTER, PA

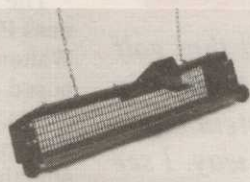
CIRCLE #177

Golf Course Marketplace

To reserve space in this section, call Diana Costello-Lee at 207-846-0600

GET THE ROCKS OUT...

and the pine cones, and other debris. The Sand Trap Renovator comes in 2 hand sizes: 12" wide (#511) and 24" wide (#512) and one machine size 4' wide for use with the TORO 5000, JOHN DEERE 1200, and Smithco units (#555). Insert hardware cloth for smaller particles.

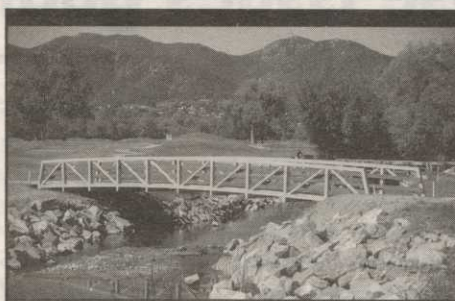


Ask Your Golf Course Distributor for
INNOVATIVE MAINTENANCE PRODUCTS

From *Master of the Links*

P.O. Box 283, Lockport, IL 60441-0283
(815) 723-4444 • Fax (815) 723-4485

CIRCLE #178



Carlton Oaks Country Club, Santee, CA 10' wide x 60' long, 10,000 lb. capacity

EXCEL

BRIDGE
MANUFACTURING CO.

Golf Course Bridges are our specialty! We fabricate easy-to-install, pre-engineered spans and deliver them anywhere in the USA. Call today for a free consultation.

Our classic design, with a look that stands the test of time.

800/548-0054 (Outside CA)

12001 SHOEMAKER AVENUE, SANTE FE SPRINGS, CA 90670
310/944-0701 • FAX 310/944-4025

CIRCLE #179



PAVELEC BROTHERS GOLF COURSE CONSTRUCTION CO., INC.

- ✓ New Construction
- ✓ Renovation
- ✓ Field Drainage Systems

TONY PAVELEC (201) 667-1643
EMIL PAVELEC (201) 939-6182
98 Evergreen Ave.
Nutley, NJ 07110

CIRCLE #180

LAMINATED WOOD SHELTERS & BRIDGES



PEDESTRIAN & VEHICULAR

Order Direct From The Leading Manufacturer in U.S.

- Complete Prefabricated Packages
- Ready for Fast Erection
- Direct Distribution Throughout the U.S.
- Custom Design & Engineering



CALL 800-777-8648

P.O. Box A • Morrisville, NC 27560
Tel. 919/467-6155 • FAX 919/469-2536

CIRCLE #182

ENGRAVED YARDAGE LABELS

- Bright Colors • Fasteners included
- Orders quickly shipped UPS **Free Samples!**

NEW ITEM... "THE SOLUTION"

For Areas Without Sprinklers.
Put Your Message Plus Yardage
Anywhere: Hazard Points,
Tees, Practice Ranges.

YARD EDGE GOLF
1-800-284-9273



P.O. Box 13159
Wichita, KS 67213

CIRCLE #184

POND & LAKE LINERS

- ◆ Buy Direct from fabricator 20, 30, 40 mil PVC, Hypalon, HDPE, & VLDPE.
- ◆ Custom fabricated panels of up to 25,000 S.F. available.
- ◆ Material Only, Material & Supervision, or Complete Installation service.

1-800-524-8672

Colorado Lining Company, 1062 Singing Hills Road,
Parker, CO 80134. 303-841-2022 Fax 303-841-5780

CIRCLE #181

TRIMS The Worlds Most Popular Grounds Management Software

NEW TRIMS VERSION 3.1 INCLUDES:

- ☑ Budgets & Expenses Tracking
- ☑ Equipment Maint. & Work Orders
- ☑ Inventory, PO's & Fuel Reporting
- ☑ Chemical & Fertilizer Records
- ☑ Personnel & Labor Activity Records

OPTIONAL FEATURES:

- ☑ TRIMS DrawView for site plans
- ☑ Tree Inventory
- ☑ Extended Memory Support
- ☑ Electronic Pesticide Ref / T&O
- ☑ Custom Report Writer
- ☑ Multi-User and Site Licenses

TRIMS Software International

3110 N. 19th Avenue - Suite 190
Phoenix, AZ 85015
(800) 608-7467 - (602) 277-0067

Call for your FREE DEMO diskette & indicate 5 1/4" or 3 1/2"

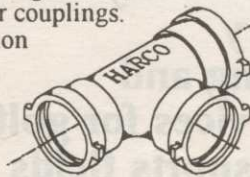


CIRCLE #183

HARCO DUCTILE IRON FITTINGS FOR GOLF COURSE IRRIGATION SYSTEMS

Sizes 2" through 12", all configurations including "knock-on" repair couplings. High Strength, high corrosion resistance.

The Harrington Corporation
P.O. Box 10335
Lynchburg, Va 24506
804-845-7094 Fax 845-8562



CIRCLE #185

LIST RENTAL

GOLF COURSE NEWS

THE NEWSPAPER FOR THE GOLF COURSE INDUSTRY

...offers you the opportunity to reach the decision makers at thousands of golf facilities with an exclusive mailing list.

Call Diana Costello-Lee for details

207-846-0600



Nationwide delivery • Install in less than two hours

Golf Course Bridges!

1-800-328-2047

CONTINENTAL
BRIDGE

Route 5, Box 178, Alexandria, MN 56308 • (612) 852-7500

Thousands in use.
Built to last.

Sponsor Member



B-DA-GL

CIRCLE #186

ADVERTISERS' INDEX

Cir. #	Advertiser	page
132	18th Green Bent Grass	36
141	American Cyanamid	47
140	Ametek	46
128	Anderson Instruments	32
106	The Andersons	8
158	The Andersons	65
137	Aquatrols	41
134	Aquatrols	37
114	BASF	17
129	Canaan Industries	32
111	Ciba	14
104	Ciba	4-5
181	Colorado Lining Co.	69
186	Continental Bridge	69
182	Enwood Structures	69
179	Excel Bridge Mfg.	69
110	Flowtronex/PSI	13
120	Fore Par	24
124	Forestry Suppliers	28
171	Formost Construction Co.	68
125	Fox Valley Systems	28
—	Golf Course Expo	60
136	Griffin Industries/Nature Safe	40
142	Growth Products	48
117	Har-Tru Corporation	20
185	Harrington/Harco Corporation	69
130	Hickson Kerley	33
—	ISK Biosciences Corp.	(insert)
108	Jacklin Seed Co./Jacklin Golf	10
163	Jacobsen	72
115	Jacobsen	18-19
174	Jesco Products/Pinhigh	68
105	John Deere	6-7
176	JPF Distributors	68
139	Kalo	44
152	Kirby Markers	58
122	Lofts, Inc.	25
178	Master of the Links	69
131	Miles Inc.	34-35
153	Milorganite	59
—	National Golf Foundation	52
161	Partac	28
180	Pavelec Bros. Construction	69
118	Pennington Seed	21
155	Pennington Seed	62
173	Precision Small Engine	68
175	Precision Small Engine	68
170	Precision Tool Prod. Co.	68
172	Quail Valley Turf Farm	68
157	Ransomes, Ransomes America Corp.	64
145	Regal Chemical	51
116	Regal Chemical	20
151	Regal Chemical	58
127	Regal Chemical	31
162	Rohm & Haas	71
135	Rohm & Haas	38-39
138	Rohm & Haas *	42-43
149	Romtec	56
119	Sandoz	22-23
126	Seed Research of Oregon	30
109	Smithco	11
121	Southern Corp. Promo.	25
143	Standard Golf	49
177	Steadfast Bridge Co.	68
113	Tee & Green Sod	16
101	Tee-2-Green	2
102	The Thinking Supt./GolfLink	3
133	The Thinking Supt./GolfLink	36
144	Toro Comm'l. Prod. Div.	50
123	Toro Comm'l. Prod. Div.	26-27
183	Trims International Software	69
103	Turflite, Inc.	3
150	Ty-Crop	57
107	United Horticultural Supply	9
159	United Horticultural Supply	66
112	United Soil Blenders	16
148	Valent	54
156	Verti-Drain/Emrex	63
160	Warren's Turf Professionals	70
169	Yamaha *	42-43
184	Yard Edge	69
146	York Bridge Concepts	52

* Appears in regional editions.

GCSAA in Asia

Continued from previous page

because you are able to do more things. The level of involvement, communication and planning goes up. It's good, but you can't do that without redirecting resources."

Mona said the 1995 GCSAA Show, held in San Francisco, was an unqualified success. He added that corporate-sponsored events — which GCSAA accepted for the first time — were well received.

"We got very good reviews on the corporate involvement in the San Francisco show," he said. "We're taking that as a mandate that we can continue with them."

"If we had received a hue and cry from our members, our attitude would be different. We don't want to offend the sensibilities of our members. But because we got good reviews, I feel comfortable saying we have a clear mandate to continue and look at other opportunities."