



Number 18 Penncross green, Troon North, Scottsdale, AZ

Penncross Creeping Bentgrass ...the Favorite for Forty Years

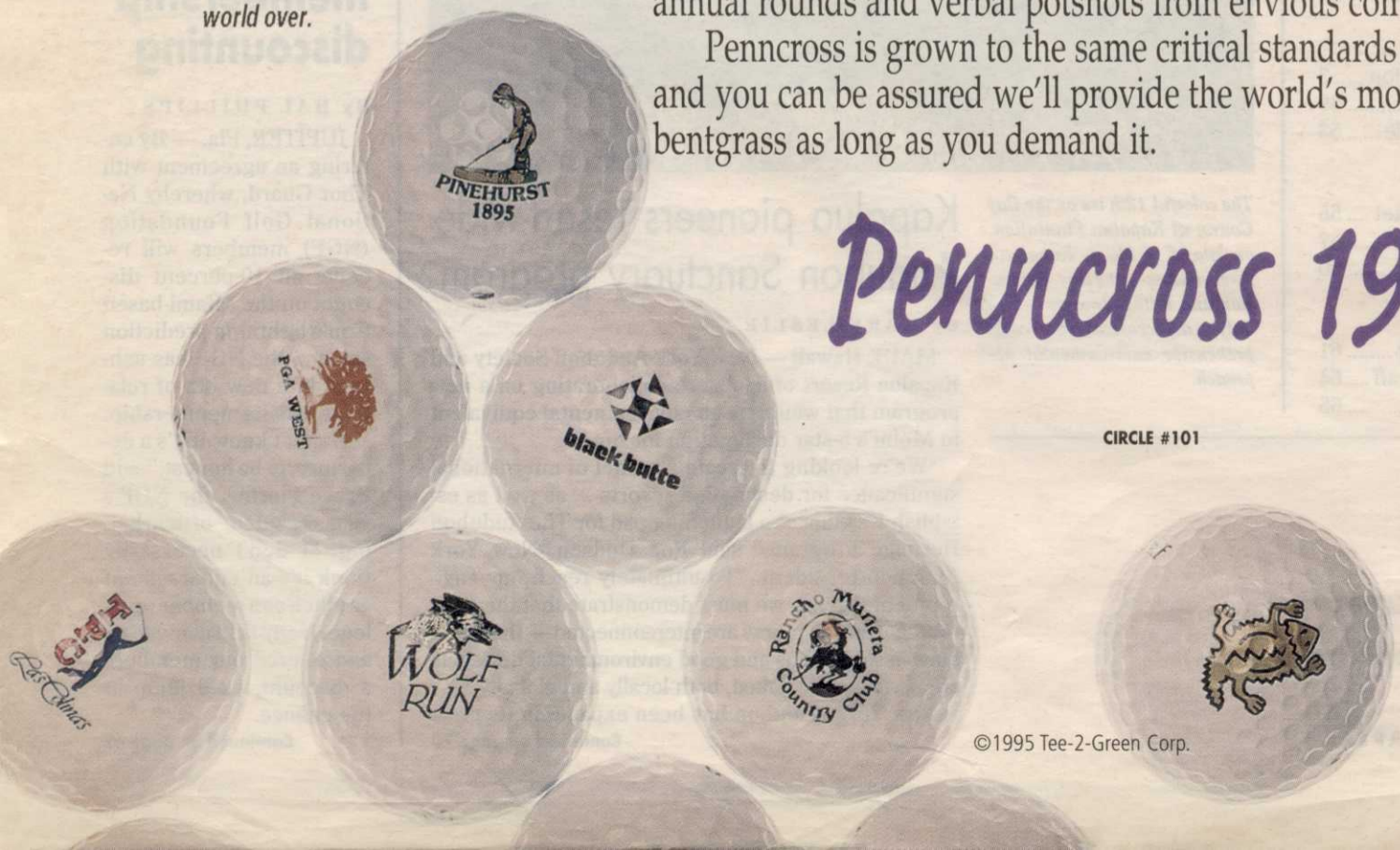
Penncross greens are found from elite prestigious private courses to the most played public courses. It is still the most specified creeping bentgrass ever, and from all indications, it will remain the first choice of golf course superintendents, designers and architects the world over.

Developed by Professor H. B. Musser and Dr. Joe Duich and introduced in the fall of 1955 as an elite seeded creeping bentgrass for putting greens, Penncross' popularity was immediate and long-lasting. Penncross' reputation for rapid establishment and quick recovery from damage has made it a popular choice of developers who must open their courses in a timely manner as well as savvy superintendents who utilize it for tees and approaches where divot repair is necessary.

Over time Penncross has proved it can take the heat, the wear of 65,000 annual rounds and verbal potshots from envious competitors.

Penncross is grown to the same critical standards set by Professor Musser, and you can be assured we'll provide the world's most recognized creeping bentgrass as long as you demand it.

Penncross 1955-1995



CIRCLE #101

©1995 Tee-2-Green Corp.

Tee-2-Green Corp.

PO Box 250
Hubbard, OR 97032
USA

1-800-547-0255
503-651-2130
FAX 503-651-2351



**FREE WITH EVERY PURCHASE:
6 HOURS OF YOUR LIFE BACK.**

Now treating one tree for oak wilt and Dutch elm disease doesn't have to be an all-day job.

Because Alamo® now comes in a micro-injection unit that reduces treatment time from over six hours to less than one.

Alamo has always been the most effective cure for oak wilt and Dutch elm disease you can buy. Now it's the most expedient, as well.

So you can save the tree, without killing your schedule in the process.

© 1995 Ciba-Geigy Corporation, Turf and Ornamental Products. Always read and follow label directions.

BARRICADE® HERBICIDE PROVIDES RESULTS YOU CAN COUNT ON FROM THE FAIRWAY TO THE BOARDROOM. NOW THAT'S...

SECURITY

Job performance is judged on results — not intentions. So it pays to use tools you can rely on. Like Barricade herbicide. Barricade gives you consistent, season-long control of crabgrass, goosegrass, and other grassy weeds. Even better, Barricade's prescribed rates deliver the precision timing you need to accurately determine its length of control. So you can overseed precisely when you need. Barricade is safe on turf and doesn't stain or leach out of the weed germination zone. And Barricade's lower active ingredient makes it easier on the environment. Barricade herbicide. The cost-effective turf management tool that makes you and your course look good. To receive your **FREE** brochure and product label, call **1-800-435-TURF (8873)**.



LENGTH OF CONTROL OF CRABGRASS

Barricade Rate (lbs./A)	1	2	3	4	5	6	7	8
1.50	[Bar chart showing 8 months of control]							
1.25	[Bar chart showing 7 months of control]							
1.00	[Bar chart showing 6 months of control]							
0.75	[Bar chart showing 5 months of control]							
0.50	[Bar chart showing 4 months of control]							



Barricade Herbicide
SEASON-LONG CONTROL
THAT STOPS ON A DIME

Read and follow label directions carefully. Barricade Herbicide is a registered trademark of Sandoz Ltd. © 1994 Sandoz Agro, Inc.

WHEN IT'S TIME TO OVERSEED,
BARRICADE®'S SEASON-LONG CONTROL
STOPS ON A DIME. NOW THAT'S...

CONFIDENCE

Yours is a precision business. So you need turf management tools that give you predictable results. Like Barricade herbicide. A single early application of Barricade provides consistent season-long control of crabgrass, goosegrass, and other tough weeds. And when you're ready to reseed — no problem. That's because Barricade's prescribed rates deliver the precision timing you need to accurately determine its length of control. Its low solubility keeps it near the surface, in the weed germination zone, and away from developing roots. And Barricade's low active ingredient makes it easier on the environment. What's more, Barricade eliminates the concern for staining. Barricade herbicide. Cost-effective performance that builds confidence. To receive your **FREE** brochure and product label, call **1-800-435-TURF (8873)**.



Barricade Herbicide
**SEASON-LONG CONTROL
THAT STOPS ON A DIME**

© SANDOZ Read and follow label directions carefully. Barricade Herbicide is a registered trademark of Sandoz Ltd. © 1994 Sandoz Agro, Inc.



Work Wonders.

Transport turf. Shift sand. There's very little E-Z-GO turf vehicles can't handle. Thanks to heavy load capacities. Spacious load beds. And a wide range of options and accessories to customize for virtually any job. So workers will be able to haul more. Handle bulkier loads. And get more done.

Call 1-800-241-5855. We'll put you in touch with your nearest E-Z-GO representative. You'll wonder how you ever got along without one.

E-Z-GO **TEXTRON**

©1994 E-Z-GO Textron

E-Z-GO Division Of Textron Inc.

CIRCLE #136

NEW

Sentinel

40WG Turf Fungicide

A broad spectrum systemic turf fungicide for prevention and control of certain diseases on golf courses and sod farms.

Active Ingredient:

Cyproconazole [α-(4-chlorophenyl)-
α-(1-cyclopropylethyl)-1H-1,2,
4-triazole-1-ethanol] . . . 40%

Inert Ingredients: . . . 60%

Total . . . 100%

EPA Reg. No. 55947-132
EPA Est. No. 33967-NJ-1

KEEP OUT OF REACH OF CHILDREN

CAUTION

SEE CONTAINER LABEL FOR
PRECAUTIONARY STATEMENTS

CONTAINS: 6x3.6 oz. Water Soluble bags

THE BEST FUNGICIDE ON THE COURSE

LONGEST CONTROL • BEST PERFORMANCE • LOWEST RATES

THE CONFIDENCE TO WIN AGAINST BROWN PATCH, DOLLAR SPOT,
SUMMER PATCH AND 11 OTHER TURF DISEASES.

THE BEST PREVENTIVE CONTROL

Increase your confidence with just one application of Sentinel. It gives you systemic control of a broad spectrum of 14 damaging turf diseases. It's the most effective way ever to reduce your worry about disease control.

THE LONGEST CONTROL



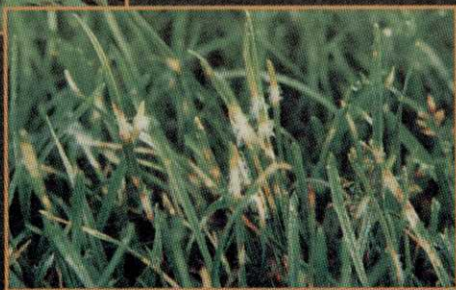
- Ranges of expected length of control for Brown Patch and Dollar Spot under comparable conditions.
- Comparisons with other systemic fungicides based on eight years of research and EUP trials.

LONGER CONTROL THAN THE PRODUCT YOU'RE USING NOW

Only Sentinel delivers this level of extended disease protection. In 8 years and more than 400 tests, Sentinel has consistently delivered the longest control of any fungicide. '93 EUP results averaged 20 to 35% longer, with even more dramatic results in many trials.



Brown Patch

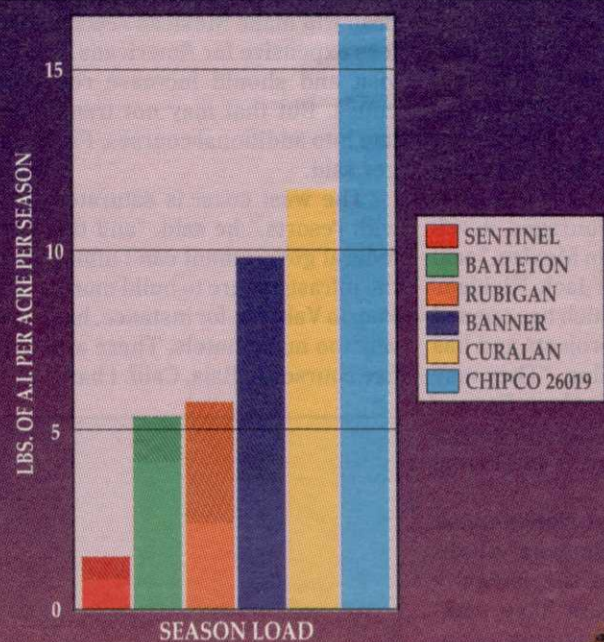


Dollar Spot

PROVEN FROM TEE TO GREEN

Sentinel has proven its *longest control* in trials in 25 states on 12 different varieties of turf. It's effective on tees, greens and on fairways, and its quick absorption means it won't wash away with rain or standard irrigation practices.

COMPARATIVE SEASON LOADS SENTINEL 40WG: LONGEST CONTROL - LOWEST RATE



BASED ON USE RATE AND RECOMMENDED SPRAY INTERVAL FOR DOLLAR SPOT & BROWN PATCH CONTROL FOR A 120-DAY SEASON

A LITTLE GOES A LONG WAY

Good news for you and for the environment. Sentinel is effective at the lowest rates of any available fungicide on the market. You apply less, store less, have a lower seasonal load and still get the longest length of control.

EASY TO USE

Sentinel comes in convenient 3.6 oz. water soluble packets. These easy-to-use packets mean no pouring or messy measuring. Just toss in the tank and you're ready to apply.

PLAY TO WIN WITH THE MOST CONFIDENCE

Sentinel gives you the best shots: longest control, broad spectrum and lowest rates on the course. To tee off against turf disease with new Sentinel 40WG, contact your distributor or call Sandoz at 1-800-435-TURF for more information.

• SANDOZ Use pesticides effectively. Read and follow label directions carefully. Sentinel 40WG fungicide is a registered trademark of Sandoz Ltd. ©1994 Sandoz Agro, Inc. Bayleton is a registered trademark of Miles, Inc. Rubigan is a registered trademark of DowElanco. Banner is a registered trademark of Ciba. Curalan is a registered trademark of BASF Corporation. Chipco 26019 is a registered trademark of Rhone-Poulenc.

GOLF COURSE



EXPO

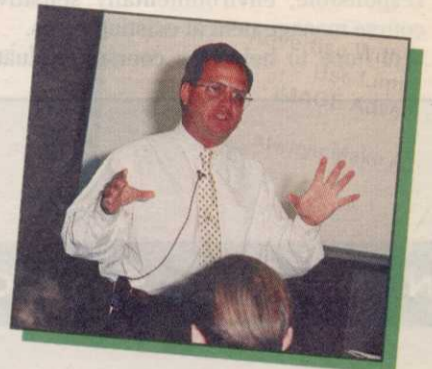
ORANGE COUNTY CONVENTION CENTER
ORLANDO, FLORIDA
NOVEMBER 9-10, 1995

A NATIONAL EXHIBITION AND CONFERENCE FOR OWNERS,
SUPERINTENDENTS, MANAGERS, AND DEVELOPERS OF
PUBLIC-ACCESS GOLF FACILITIES

Golf Course Expo Means Business

The public-access golf industry comes together at Golf Course Expo—the only national trade show and conference for superintendents, managers, owners, operators, and developers of public-access facilities—daily-fee, semi-private, resort, and municipal courses.

- **Save money by pinpointing exhibitors on the trade show floor**
We're serious about saving your money and time. Investigate vendors who are there for all your needs—equipment, chemicals, seed, builders, accessories, sod, golf cars, consultants, management software, fertilizers, architects, and marketing firms.
- **Get up to speed on new products and services**
Find out "what's new" to give your course the competitive edge. The key to success in the business of golf is staying on top of new trends, partnering with vendors, and finding creative solutions. And Golf Course Expo is a carefully designed event to provide all three—and give you the edge.
- **Participate in special show events—like Shop Talks—where you'll learn about products and services that impact your bottom line**
Shop Talks are vendor-sponsored sessions set up on the show floor. Participating suppliers will zero in on solutions, feature their products and services, and address critical industry trends. And it's all part of the show.
- **Solve problems by attending the multi-tracked conference program**
In the crowded public-access marketplace, maintaining quality conditions on your course in the face of high traffic, and at a reasonable cost is even more important. Marketing your course takes on added significance. And efficient management—doing more with less—becomes an absolute must. The conference offers easy-to-adopt ideas that really work.



"Very interesting information. Being new in the business, this is very informative and interesting."

Mark Clark, Food and Beverage Manager
Sandy Ridge Golf Course, Midland, MI



"Great Start"

R.J. Kooyer, President
Bankhead Forest Golf Course, Double Springs, AL



"Well run event as always."

David Claeysens, Director of Golf
Rockford, Illinois Park District

Bring the Management Team

Golf Course Expo is a must-attend for superintendents, managers, owners, operators, general managers, golf administrators, directors of parks and recreation, builders, architects, and developers. This is a great chance for everyone at your course who makes buying decisions to find key products and services that will help your facility operate more effectively and efficiently.

And because its sponsored by *Golf Course News*, Golf Course Expo means business for you!



"This was a very worth while experience. It's always great to get people together who are in the same business."

Craig Immel, Director of Golf
Aberdeen Golf Club, Cleveland, OH

Circle November 9 and 10
On Your Calendar Now to be
Part of This National Event for
Key Professionals at Public-Access
Golf Facilities

✂ Cut Here

Send me more information on Golf Course Expo

- Send me information for attending the trade show free of charge
 Send me information for attending the conference
 My company is interested in purchasing exhibit space, please send me details

NAME: _____

TITLE: _____

COMPANY: _____

ADDRESS: _____

CITY: _____ STATE: _____ ZIP: _____

TELEPHONE: _____ FAX: _____

Key code: AD

Return to Golf Course Expo, PO Box 997, 38 Lafayette Street, Yarmouth ME 04096
For faster service fax to 207-846-0657

GOLF COURSE



EXPO

ORANGE COUNTY CONVENTION CENTER
ORLANDO, FLORIDA
NOVEMBER 9-10, 1995

They don't worry about *Sclerotinia*, *Rhizoctonia* or the damaging effects of summer stress complex.



With Fore[®], neither will you.

Most golfers couldn't even guess what *Sclerotinia* is. Or *Helminthosporium*. But they know a disease outbreak when they see one. With Fore[®] fungicide, you can make sure they never will.

Fore gives you exceptional control against a broad spectrum of turf diseases (even the hard-to-pronounce ones). It won't injure sensitive turf. You'll get consistent performance, too. That's because Fore has been protecting

greens for more than 25 years...without any record of resistance.

Plus, Fore gives you a new way to fight back against summer stress complex: a tank mix of Fore+Aliette[®]. Even during the hottest days, Fore+Aliette stops summer stress cold. So you'll see healthy, green turf. And happier golfers.

To learn more about Fore — and forget about disease worries — see your local Rohm and Haas distributor.



ALWAYS READ AND FOLLOW LABEL DIRECTIONS FOR FORE FUNGICIDE.
Fore[®] is a registered trademark of Rohm and Haas Company. Aliette is a trademark of Rhone-Poulenc.
©Rohm and Haas Company 1995

T-O-121

2 new models. 5 extra inches. 11% more common sense.

Higher capacity hydraulic circuits.

New one piece enclosed hood.

New console for controls.

Two new models: LF-123 and LF-128.

Sensible hydraulic flow layout.

100 inches of cut per pass.



It just makes sense: Start with the top-selling light-weight fairway mower in the world, and introduce two new models. Both the 23-horse LF-123 and the 28-horse LF-128 offer common sense where you need it most.

More horsepower per inch of cut. Even with fewer horses than the nearest competitor, we deliver up to 11% more horsepower per inch of cut. How? By featuring hydraulic flow layouts that get power to cutting units more sensibly. Instead of one pump being responsible for more cutting, each shares work evenly. The result: superior cutting capacity—even in thicker, heavier grass.

More inches per pass. Of course, you not only get more muscle where you need it most, you also get a 5" wider swath than the nearest competitor—a full 100 inches of cut per pass.

More sensible features. New, more ergonomic controls mean more operator convenience. A stylish, new enclosed hood design lowers sound levels and makes accessibility easy. And the optional, one-of-a-kind Turf Groomer® fairway conditioner creates the ultimate fairway playing surface. Both two-wheel and four-wheel-drive models are available. Ask your Jacobsen dealer for a demonstration.

THE PROFESSIONAL'S CHOICE ON TURF.

JACOBSEN
TEXTRON

Jacobsen Division of Textron Inc.

CIRCLE #164

