

Number 18 Penncross green, Troon North, Scottsdale, AZ

# Penncross Creeping Bentgrass ...the Favorite for Forty Years

*Penncross greens are found from elite prestigious private courses to the most played public courses. It is still the most specified creeping bentgrass ever, and from all indications, it will remain the first choice of golf course superintendents, designers and architects the world over.*

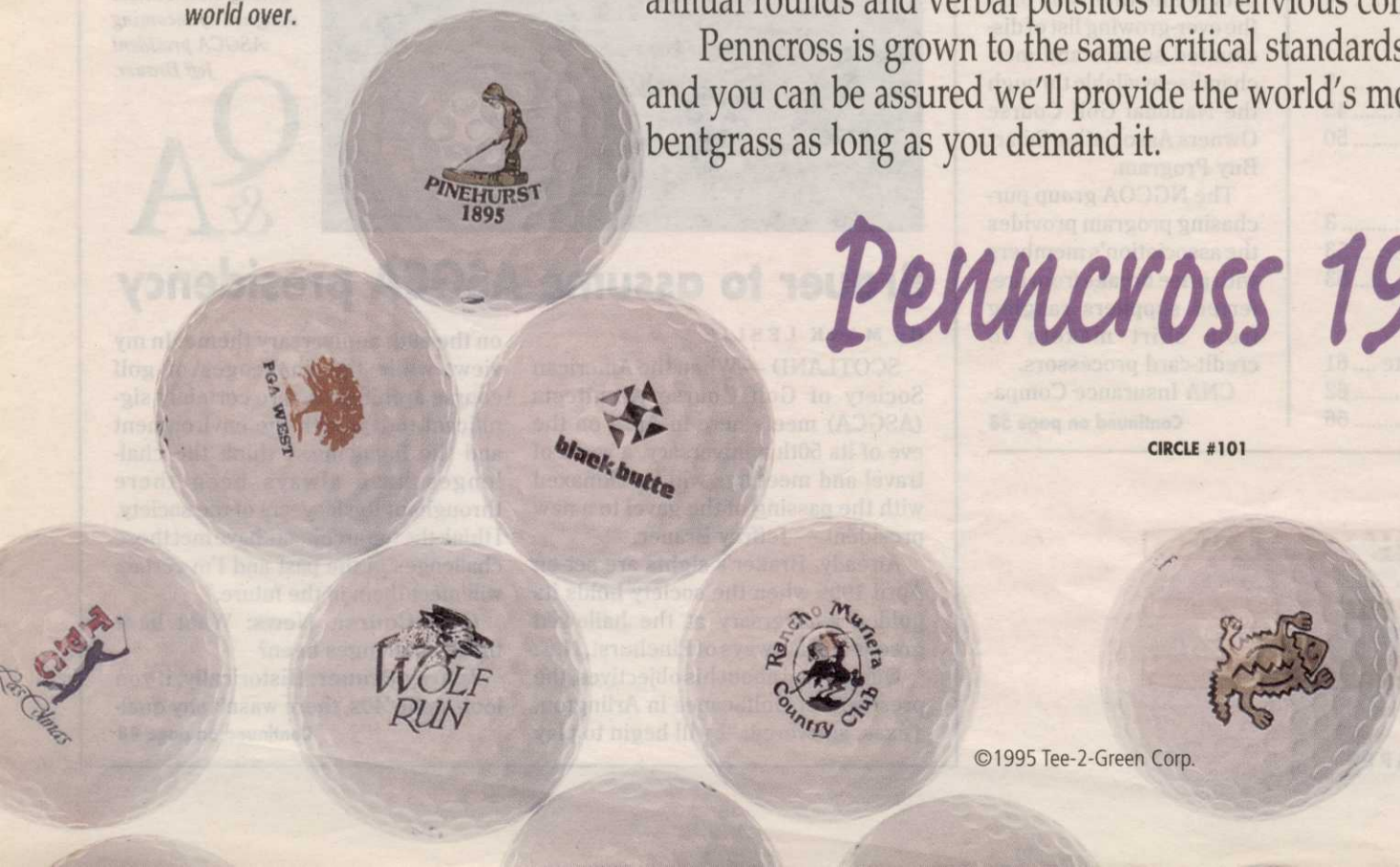
**D**eveloped by Professor H. B. Musser and Dr. Joe Duich and introduced in the fall of 1955 as an elite seeded creeping bentgrass for putting greens, Penncross' popularity was immediate and long-lasting. Penncross' reputation for rapid establishment and quick recovery from damage has made it a popular choice of developers who must open their courses in a timely manner as well as savvy superintendents who utilize it for tees and approaches where divot repair is necessary.

Over time Penncross has proved it can take the heat, the wear of 65,000 annual rounds and verbal potshots from envious competitors.

Penncross is grown to the same critical standards set by Professor Musser, and you can be assured we'll provide the world's most recognized creeping bentgrass as long as you demand it.

## Penncross 1955-1995

CIRCLE #101



©1995 Tee-2-Green Corp.

**Tee-2-Green Corp.**

PO Box 250  
Hubbard, OR 97032  
USA

1-800-547-0255

503-651-2130

FAX 503-651-2351





**IF THIS IS WHAT YOU THINK PRIMO DOES TO YOUR GRASS,**



**IT'S TIME WE SET YOU IN THE RIGHT DIRECTION.**

Lots of people know that Primo® regulates the growth of grass. But not as many understand how.

Primo doesn't stunt turf. Instead, it redirects the grass's growth.

Unlike other growth regulators, which actually stop cell division, grass treated with Primo will still be actively growing, producing the same amount

of new cells. Only now the cells will be smaller. Smaller cells mean a more compact plant.

Nutrients that otherwise would be needed above ground are now channeled into the roots, giving you a thicker stand, and up to 25% more root mass. So the grass can more efficiently take up water and nutrients.

And Primo is foliar-absorbed, so there's less risk of inconsistent uptake.

The result? The easiest-to-manage, best-looking turf you can imagine.

It's easy to see why all roads lead to Primo.



©1995 Ciba-Geigy Corporation, Turf and Ornamental Products supports the DON'T BAG IT™ program. Always read and follow label directions.

CIRCLE #110



# Before Arnie's Army sees the first fairway at Bay Hill, this army has seen them all.



The 18th Fairway at The Bay Hill Club; Arnold Palmer and Superintendent Dwight Kummer



As a player and course designer, Arnold Palmer is legendary. In addition to conquering the Masters, British and U.S. Opens, he counts victories in 61 PGA tournaments. His style and personal commitment to the game have earned him a loyal army of followers. That same commitment has led him to choose Jacobsen.

Take our fairway mowers for example. They deliver flawless performances at The Bay Hill Club, Arnie's home course and site of the Nestle Invitational.

The ST-5111™ offers the productivity of an 11-foot cut with quality results due to its amazing balance and touch.

The LF-100™, with our patented Turf Groomer® fairway conditioner, delivers a

tournament-quality cut to show off every nuance of your fairways.

While the LF-3810™, the original heavy-duty lightweight, provides the power to cut every other day with a beautiful finish even the pros can appreciate.

The entire line produces results anyone can be proud of. Because as Arnie knows, when you've got an entire army watching your every move, it's important to look your best.

THE PROFESSIONAL'S CHOICE ON TURF.

**JACOBSEN**  
**TEXTRON**

Jacobsen Division of Textron Inc.







# EAGLE® HAS

## **Introducing Eagle fungicide**

When it comes to maintaining healthy golf courses and long-term playability, new Eagle® soars above other systemic fungicides.

Eagle gives you unbeatable control against tough diseases, like brown patch and dollar spot. Long-lasting performance.

Low use rates. And exceptional turf safety. So you can give golfers high-quality greens.

## **Fits 14-day schedules**

For preventive or curative control, Eagle provides great results. You'll find the best performance, though, with a 14-day protectant schedule.

Even during July and August — when temperatures and humidity rise and disease pressure is highest — Eagle doesn't quit.

Eagle offers another big advantage over other systemics...turf safety. You won't see weakened roots, leaf damage or coarse turf blades.





# LANDED.

So greens always look and play their best.

### Other benefits

Eagle brings good news for applicators, too. Just six tenths of an ounce per 1,000 square feet gives you all the control you need. And mixing couldn't be easier. That's because Eagle comes in

premeasured, water-soluble pouches you can toss right in the tank. There's no measuring, no mess and minimal worker exposure.

To find out more, see your local Rohm and Haas distributor. But don't wait long; Eagle is taking off fast.



**For top-flight performance.**

ALWAYS READ AND FOLLOW LABEL DIRECTIONS FOR EAGLE FUNGICIDE.

Eagle® is a registered trademark of Rohm and Haas Company.  
©Rohm and Haas Company 1995 T-O-120 3/95



CIRCLE #119

UFLA  
on le  
BY MTK  
H. sup  
keep the  
as a tool  
carefully  
perform  
Florida R  
The res  
The Gro  
Clay and  
Golf Ass  
a critical  
we all can  
investigat  
billy head  
of sever  
remains  
and put  
with Tiff  
General  
cent of in  
several  
in which  
putting gr  
good and  
breakdown  
the of M  
and) was  
amount (I  
applied) a  
applicatio  
This app  
green will  
a 7-man  
and appl  
1992, year  
the 2-man  
for which  
putting gr  
What is  
pre-club  
and Clay  
gaining bo  
just to the  
metabolite  
energy  
Fresno  
scientist  
those mic  
and for sev  
It is reason  
more exp  
hemorrh  
product  
of applicat  
Superior  
abundant  
carefully  
before app  
hemorrh  
polymers  
greens sh  
and follow  
over tea  
and) will  
many golf  
to be used  
are an in  
and we kn  
will not ju  
go away. We  
provide a  
and environ  
to be used  
Intermed  
Lyle Man  
(DRI) pr  
green, w  
course for  
and then  
the prod  
clear stain  
This res  
point that  
ever before  
golf course  
application of  
tion and ap  
clear been so important. In the  
Dr. Richard Kean is director of  
Golf Association for the United  
States Golf Association. He works out  
of St. Louis, MO.



# NEW

## Sentinel

### 40WG Turf Fungicide

A broad spectrum systemic turf fungicide for prevention and control of certain diseases on golf courses and sod farms.

**Active Ingredient:**  
Cyproconazole [α-(4-chlorophenyl)-  
α-(1-cyclopropylethyl)-1H-1,2,  
4-triazole-1-ethanol] . . . 40%  
Inert Ingredients: . . . 60%

Total . . . 100%

EPA Reg. No. 55947-132  
EPA Est. No. 33967-NJ-1

KEEP OUT OF REACH OF CHILDREN

**CAUTION**

SEE CONTAINER LABEL FOR  
PRECAUTIONARY STATEMENTS

CONTAINS: 6x3.6 oz. Water Soluble bags

# THE BEST FUNGICIDE ON THE COURSE

## LONGEST CONTROL • BEST PERFORMANCE • LOWEST RATES

THE CONFIDENCE TO WIN AGAINST BROWN PATCH, DOLLAR SPOT,  
SUMMER PATCH AND 11 OTHER TURF DISEASES.



## THE BEST PREVENTIVE CONTROL

Increase your confidence with just one application of Sentinel. It gives you systemic control of a broad spectrum of 14 damaging turf diseases. It's the most effective way ever to reduce your worry about disease control.

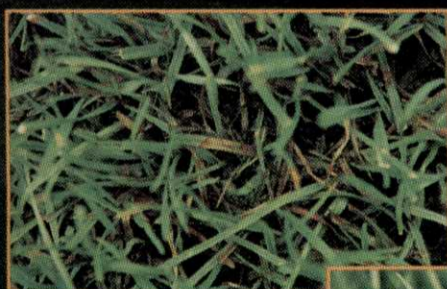
## THE LONGEST CONTROL



- Ranges of expected length of control for Brown Patch and Dollar Spot under comparable conditions.
- Comparisons with other systemic fungicides based on eight years of research and EUP trials.

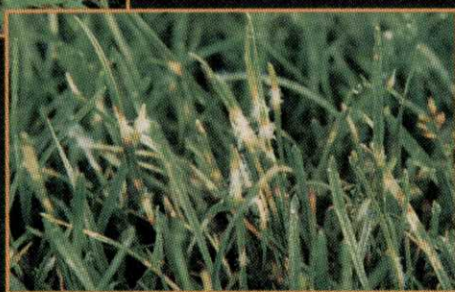
## LONGER CONTROL THAN THE PRODUCT YOU'RE USING NOW

Only Sentinel delivers this level of extended disease protection. In 8 years and more than 400 tests, Sentinel has consistently delivered the longest control of any fungicide. '93 EUP results averaged 20 to 35% longer, with even more dramatic results in many trials.



Brown Patch

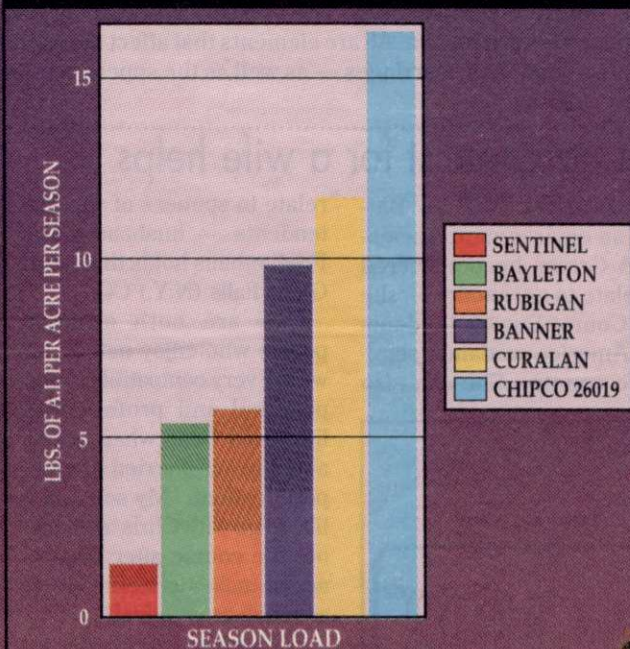
Dollar Spot



## PROVEN FROM TEE TO GREEN

Sentinel has proven its *longest control* in trials in 25 states on 12 different varieties of turf. It's effective on tees, greens and on fairways, and its quick absorption means it won't wash away with rain or standard irrigation practices.

## COMPARATIVE SEASON LOADS SENTINEL 40WG: LONGEST CONTROL - LOWEST RATE



BASED ON USE RATE AND RECOMMENDED SPRAY INTERVAL FOR DOLLAR SPOT & BROWN PATCH CONTROL FOR A 120-DAY SEASON

## A LITTLE GOES A LONG WAY

Good news for you and for the environment. Sentinel is effective at the lowest rates of any available fungicide on the market. You apply less, store less, have a lower seasonal load and still get the longest length of control.

## EASY TO USE

Sentinel comes in convenient 3.6 oz. water soluble packets. These easy-to-use packets mean no pouring or messy measuring. Just toss in the tank and you're ready to apply.

## PLAY TO WIN WITH THE MOST CONFIDENCE

Sentinel gives you the best shots: longest control, broad spectrum and lowest rates on the course. To tee off against turf disease with new Sentinel 40WG, contact your distributor or call Sandoz at 1-800-435-TURF for more information.

© SANDOZ Use pesticides effectively. Read and follow label directions carefully. Sentinel 40WG fungicide is a registered trademark of Sandoz Ltd. ©1994 Sandoz Agro, Inc. Bayleton is a registered trademark of Miles, Inc. Rubigan is a registered trademark of DowElanco. Banner is a registered trademark of Ciba. Curalan is a registered trademark of BASF Corporation. Chipco 26019 is a registered trademark of Rhone-Poulenc.



# They don't worry about *Sclerotinia*, *Rhizoctonia* or the damaging effects of summer stress complex.



## With Fore<sup>®</sup>, neither will you.

Most golfers couldn't even guess what *Sclerotinia* is. Or *Helminthosporium*. But they know a disease outbreak when they see one. With Fore<sup>®</sup> fungicide, you can make sure they never will.

Fore gives you exceptional control against a broad spectrum of turf diseases (even the hard-to-pronounce ones). It won't injure sensitive turf. You'll get consistent performance, too. That's because Fore has been protecting

greens for more than 25 years...without any record of resistance.

Plus, Fore gives you a new way to fight back against summer stress complex: a tank mix of Fore+Aliette<sup>®</sup>. Even during the hottest days, Fore+Aliette stops summer stress cold. So you'll see healthy, green turf. And happier golfers.


To learn more about Fore — and forget about disease worries — see your local Rohm and Haas distributor.



ALWAYS READ AND FOLLOW LABEL DIRECTIONS FOR FORE FUNGICIDE.  
Fore<sup>®</sup> is a registered trademark of Rohm and Haas Company. Aliette is a trademark of Rhone-Poulenc.  
©Rohm and Haas Company 1995







**UNLESS YOU CAN CONTROL YOUR WEATHER,  
YOU'D BETTER CONTROL YOUR N AND K RELEASE.**

THERE ARE TOO MANY THINGS ABOUT RUNNING A COURSE THAT YOU CAN'T CONTROL. LIKE WEATHER, TRAFFIC AND GREENS COMMITTEES.

BUT YOU CAN CONTROL THE DELIVERY OF NITROGEN AND POTASSIUM TO YOUR TURF. WITH K-POWER®.

K-POWER POTASSIUM NITRATE PROVIDES A BENEFICIAL BALANCE BETWEEN POTASSIUM AND NITRATE NITROGEN NOT FOUND IN OTHER POTASSIUM SOURCES. AND K-POWER'S BREAKTHROUGH POLYMER COATING, MULTICOTE®, RELEASES

BOTH NUTRIENTS TO YOUR TURF EVENLY OVER TIME.

THAT'S GOOD TO KNOW, BECAUSE A PROPER N:K BALANCE IS KEY TO HEALTHY TURF. AND A HEALTHY PAYCHECK.

K-POWER GIVES YOU CONTROL OF NUTRIENT DELIVERY ACROSS YOUR ENTIRE FERTILITY PROGRAM: GREENS GRADE, FAIRWAYS AND SOLUBLES. SO GET A LITTLE MORE CONTROL OVER YOUR DESTINY WITH K-POWER.

FOR MORE INFORMATION, CONTACT YOUR DISTRIBUTOR OR CALL US AT 1-800-227-2798.



**THE  
GOOD  
STUFF™**

**Vicksburg**  
chemical company

© 1995 VICKSBURG CHEMICAL. K-POWER AND MULTICOTE ARE REGISTERED TRADEMARKS OF VICKSBURG CHEMICAL. **ATI** COMPANY

CIRCLE #147



# GOLF COURSE



# EXPO

ORANGE COUNTY CONVENTION CENTER  
ORLANDO, FLORIDA  
NOVEMBER 9-10, 1995

A NATIONAL EXHIBITION AND CONFERENCE FOR OWNERS,  
SUPERINTENDENTS, MANAGERS, AND DEVELOPERS OF  
PUBLIC-ACCESS GOLF FACILITIES



*"Great Start"*

R.J. Kooyer, President  
Bankhead Forest Golf Course, Double Springs, AL



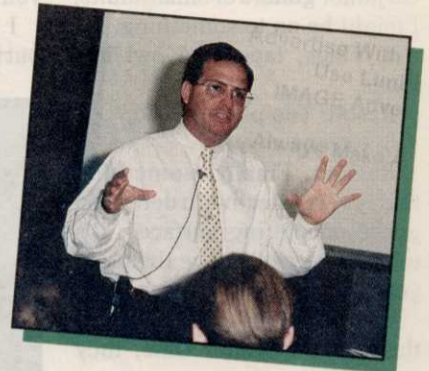
*"Well run event as always."*

David Claeysens, Director of Golf  
Rockford, Illinois Park District

# Golf Course Expo Means Business

The public-access golf industry comes together at Golf Course Expo—the only national trade show and conference for superintendents, managers, owners, operators, and developers of public-access facilities—daily-fee, semi-private, resort, and municipal courses.

- **Save money by pinpointing exhibitors on the trade show floor**  
We're serious about saving your money and time. Investigate vendors who are there for all your needs—equipment, chemicals, seed, builders, accessories, sod, golf cars, consultants, management software, fertilizers, architects, and marketing firms.
- **Get up to speed on new products and services**  
Find out "what's new" to give your course the competitive edge. The key to success in the business of golf is staying on top of new trends, partnering with vendors, and finding creative solutions. And Golf Course Expo is a carefully designed event to provide all three—and give you the edge.
- **Participate in special show events—like Shop Talks—where you'll learn about products and services that impact your bottom line**  
Shop Talks are vendor-sponsored sessions set up on the show floor. Participating suppliers will zero in on solutions, feature their products and services, and address critical industry trends. And it's all part of the show.
- **Solve problems by attending the multi-tracked conference program**  
In the crowded public-access marketplace, maintaining quality conditions on your course in the face of high traffic, and at a reasonable cost is even more important. Marketing your course takes on added significance. And efficient management—doing more with less—becomes an absolute must. The conference offers easy-to-adopt ideas that really work.



*"Very interesting information. Being new in the business, this is very informative and interesting."*

Mark Clark, Food and Beverage Manager  
Sandy Ridge Golf Course, Midland, MI

## Bring the Management Team

Golf Course Expo is a must-attend for superintendents, managers, owners, operators, general managers, golf administrators, directors of parks and recreation, builders, architects, and developers. This is a great chance for everyone at your course who makes buying decisions to find key products and services that will help your facility operate more effectively and efficiently.



*"This was a very worth while experience. It's always great to get people together who are in the same business."*

Craig Immel, Director of Golf  
Aberdeen Golf Club, Cleveland, OH

And because its sponsored by *Golf Course News*, Golf Course Expo means business for you!

Circle November 9 and 10  
On Your Calendar Now to be  
Part of This National Event for  
Key Professionals at Public-Access  
Golf Facilities

✂ Cut Here

## Send me more information on Golf Course Expo

- Send me information for attending the trade show free of charge  
 Send me information for attending the conference  
 My company is interested in purchasing exhibit space, please send me details

NAME: \_\_\_\_\_

TITLE: \_\_\_\_\_

COMPANY: \_\_\_\_\_

ADDRESS: \_\_\_\_\_

CITY: \_\_\_\_\_ STATE: \_\_\_\_\_ ZIP: \_\_\_\_\_

TELEPHONE: \_\_\_\_\_ FAX: \_\_\_\_\_ Key code: AD

Return to Golf Course Expo, PO Box 997, 38 Lafayette Street, Yarmouth ME 04096  
For faster service fax to 207-846-0657

# GOLF COURSE



# EXPO

ORANGE COUNTY CONVENTION CENTER  
ORLANDO, FLORIDA  
NOVEMBER 9-10, 1995





# LOOK BEYOND ORNAMENTALS TO A TOUGH TURF INSECTICIDE

Get tough with **Mavrik® Aquaflo**. Mavrik isn't just for ornamentals anymore. New tested, proven rates make it one of the toughest turf insecticides on golf courses today. It controls a broad range of hungry surface feeders and nuisance pests — from chinch bugs, fleas, and bluegrass billbugs to sod webworms, beetles, and mites. Mavrik is odorless and has low active ingredient per acre. Mavrik Aquaflo. Tough performance that's hard to beat. To receive your **FREE** brochure and product label, call **1-800-435-TURF (8873)**.



**TOUGH ON TURF INSECTS  
EASY ON ORNAMENTALS**



# 2 new models. 5 extra inches. 11% more common sense.

Higher capacity hydraulic circuits.

New one piece enclosed hood.

New console for controls.

Two new models: LF-123 and LF-128.

Sensible hydraulic flow layout.

100 inches of cut per pass.



It just makes sense: Start with the top-selling light-weight fairway mower in the world, and introduce two new models. Both the 23-horse LF-123 and the 28-horse LF-128 offer common sense where you need it most.

**More horsepower per inch of cut.** Even with fewer horses than the nearest competitor, we deliver up to 11% more horsepower per inch of cut. How? By featuring hydraulic flow layouts that get power to cutting units more sensibly. Instead of one pump being responsible for more cutting, each shares work evenly. The result: superior cutting capacity—even in thicker, heavier grass.

**More inches per pass.** Of course, you not only get more muscle where you need it most, you also get a 5" wider swath than the nearest competitor—a full 100 inches of cut per pass.

**More sensible features.** New, more ergonomic controls mean more operator convenience. A stylish, new enclosed hood design lowers sound levels and makes accessibility easy. And the optional, one-of-a-kind Turf Groomer® fairway conditioner creates the ultimate fairway playing surface. Both two-wheel and four-wheel-drive models are available. Ask your Jacobsen dealer for a demonstration.

THE PROFESSIONAL'S CHOICE ON TURF.

**JACOBSEN  
TEXTRON**

Jacobsen Division of Textron Inc.

CIRCLE #164

