

Golf Course Marketplace

To reserve space in this section, call Diana Costello-Lee, 207-846-0600

ADVERTISERS' INDEX

Circle #	Advertiser	Page #
137	Air-o-lator	42
144	American Cyanamid	48
138	Amiad Filtration Systems	43
156	Anderson Instruments	64
148	The Andersons	55
122	Applied Biochemists	31
113	Aquamaster	17
136	Aquatrols	42
155	BASF	63
117	Brouwer Turf Equip.	21
182	C-LOC Retention Systems, Inc.	69
147	Cedar Chemical/Vicksburg	52
110	Ciba	14
104	Ciba	4-5
131	Ciba	36-37
152	Club Car	59
187	Continental Bridge	69
183	Enwood Structures	69
181	Excel Bridge Mfg.	69
142	Flowtronex/PSI	47
161	Fore Par	66
115	Forestry Suppliers	20
134	Formost Construction Co.	40
116	Fox Valley Systems	20
—	Golf Course Expo	60
186	Harrington/Harco Corporation	69
123	Hickson Kerley	31
154	Jacklin Seed Co.	62
164	Jacobsen	72
114	Jacobsen	18-19
176	Jesco Products/Pinhigh	68
120	John Deere	24-25
178	JPF Distributors	68
112	Kalo	16
103	Kirby Markers	3
109	Kubota	13
174	Lin Lar Golf Inc.	68
145	Lofts, Inc.	49
180	Master of the Links	69
150	Milorganite	57
149	Montco Products	56
—	National Golf Foundation	43
157	National Relocatable Structure	64
135	Otterbine/Barebo	41
141	Par Aide	46
165	Parkway Research	55
166	Partac	47
173	Pavelec Bros. Construction	68
175	Precision Small Engine	68
177	Precision Small Engine	68
170	Precision Tool Prod. Co.	68
121	Pursell Industries	26
172	Quail Valley Turf Farm	68
151	Ransomes, Ransomes America Corp.	58
133	Ransomes, Ransomes America Corp.	32
118	Regal Chemical	21
125	Regal Chemical	30
108	Rhone-Poulenc	10-11
140	Rohm & Haas	44
119	Rohm & Haas *	22-23
124	Sandoz	28-29
163	Sandoz	71
128	The Scotts Company	38-39
130	Smithco	35
143	Southern Corp. Promo.	47
107	Standard Golf	9
179	Steadfast Bridge Co.	68
101	Tee-2-Green	2
105	Toro Comm'l. Prod. Div.	6-7
146	Toro Comm'l. Prod. Div.	50-51
184	Trims International Software	69
126	Turco, Inc.	30
132	Turflite, Inc.	34
127	Ty-Crop	27
160	United Horticultural Supply	65
158	United Soil Blenders	64
106	Valent	8
102	Versa-Lok	3
111	Verti-Drain/Emrex	16
129	Warren's Turf Professionals	33
159	Water & Turf Restoration	64
162	Watertronics	70
185	Yard Edge	69
171	York Bridge Concepts	68

* Appears in regional editions.

Phillips comment

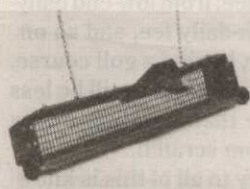
Continued from previous page

classic design features, not his overblown, near-mythical obsession with the penal and outlandish. As Pete would be quick to tell you, most of his "devilish" features — among them his forbidding, wooden bunker faces and closely shaved, steeply pitched aprons — are standard fare on countless Scottish courses. You would think a guy with a new book ("Bury Me in a Pot Bunker," which I read and liked) and an American Express commercial would work a little harder to make these points. But Pete doesn't give a damn, which accounts for a large measure of his charm.

• Truly dedicated readers may have noticed we've gone back to Mark Leslie's old drawing. We had a new one commissioned and published it last month. But no one liked it, least of all Mark. So turn back to page 12 and meet the new Mark, same as the ol' Mark.

GET THE ROCKS OUT...

and the pine cones, and other debris. The Sand Trap Renovator comes in 2 hand sizes: 12" wide (#511) and 24" wide (#512) and one machine size 4' wide for use with the TORO 5000, JOHN DEERE 1200, and Smithco units (#555). Insert hardware cloth for smaller particles.

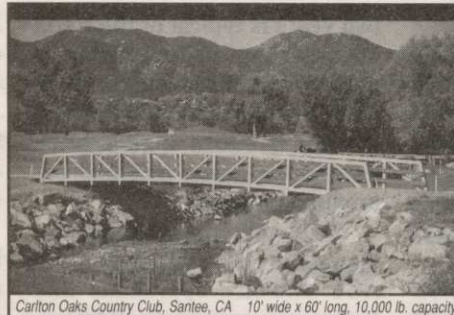


Ask Your Golf Course Distributor for INNOVATIVE MAINTENANCE PRODUCTS

From Master of the Links

P.O. Box 283, Lockport, IL 60441-0283
(815) 723-4444 • Fax (815) 723-4485

CIRCLE #180



EXCEL

BRIDGE MANUFACTURING CO.

Golf Course Bridges are our specialty! We fabricate easy-to-install, pre-engineered spans and deliver them anywhere in the USA. Call today for a free consultation.

Carlton Oaks Country Club, Santee, CA 10' wide x 60' long, 10,000 lb. capacity

Our classic design, with a look that stands the test of time.

800/548-0054 (Outside CA)

12001 SHOEMAKER AVENUE, SANTE FE SPRINGS, CA 90670
310/944-0701 • FAX 310/944-4025

CIRCLE #181

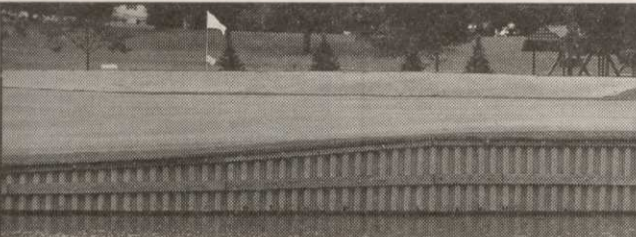
Inside Info

Get the jump on your competition by subscribing to the *Golf Course News Development Letter*

This twice-monthly newsletter...

- tracks golf course projects under consideration across the nation
- is packed with news items detailing where and when projects will be undertaken, and by whom
- is just \$195 for a year's subscription

For more information contact Editor Peter Blais at 207/846-0600



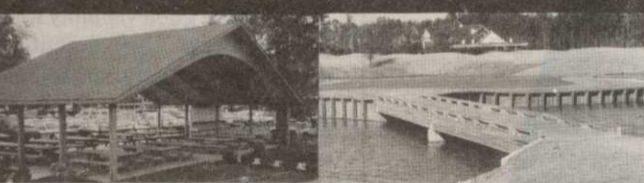
C-LOC® The Golf Course Problem Solver

Rely on C-LOC plastic panels to solve your soil erosion problems. Interlocking panels are durable, maintenance-free, easy to install, aesthetically pleasing and environmentally safe.

C-LOC® Retention Systems, Inc.
P.O. Box 0283 • Utica, MI 48318
(810) 731-9511 • FAX (810) 731-9516

CIRCLE #182

LAMINATED WOOD SHELTERS & BRIDGES



PEDESTRIAN & VEHICULAR

Order Direct From The Leading Manufacturer in U.S.

- Complete Prefabricated Packages
- Ready for Fast Erection
- Direct Distribution Throughout the U.S.
- Custom Design & Engineering



CALL 800-777-8648

P.O. Box A • Morrisville, NC 27560
Tel. 919/467-6155 • FAX 919/469-2536

CIRCLE #183

ENGRAVED YARDAGE LABELS

- Bright Colors • Fasteners included
- Orders quickly shipped UPS **Free Samples!**



NEW ITEM... "THE SOLUTION"

For Areas Without Sprinklers. Put Your Message Plus Yardage Anywhere: Hazard Points, Tees, Practice Ranges.

YARD EDGE GOLF

1-800-284-9273



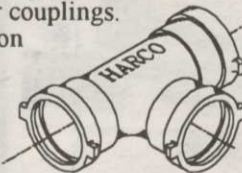
P.O. Box 13159
Wichita, KS 67213

CIRCLE #185

HARCO DUCTILE IRON FITTINGS FOR GOLF COURSE IRRIGATION SYSTEMS

Sizes 2" through 12", all configurations including "knock-on" repair couplings. High Strength, high corrosion resistance.

The Harrington Corporation
P.O. Box 10335
Lynchburg, Va 24506
804-845-7094 Fax 845-8562



CIRCLE #186

LIST RENTAL

GOLF COURSE NEWS

THE NEWSPAPER FOR THE GOLF COURSE INDUSTRY

...offers you the opportunity to reach the decision makers at thousands of golf facilities with an exclusive mailing list.

Call Diana Costello-Lee for details

207-846-0600



Nationwide delivery • Install in less than two hours

Golf Course Bridges!

1-800-328-2047

Thousands in use. Built to last. Sponsor Member

CONTINENTAL BRIDGE

Route 5, Box 178, Alexandria, MN 56308 • (612) 852-7500



NATIONAL GOLF FOUNDATION

CIRCLE #187