

# Golf Course Marketplace

To reserve space in this section, call Mary Anderson, 813-898-7077

## ADVERTISING INFO.

### 1994 RATES

	2X	6X	12X
Per col. inch:	\$75.00	\$65.00	\$50.00
Add-on per 1/4":	\$18.75	\$16.25	\$12.50
Logo incl. in ad:	\$40.00	\$40.00	\$40.00

- Rates are per insertion.
- Minimum 2-time insertion.
- Prepayment is required.

Send prepayment & ad copy to:  
**GOLF COURSE NEWS**  
 227 Second Ave. N.  
 St. Petersburg, FL 33701  
 (813) 898-7077  
 Fax (813) 825-0923

## EMPLOYMENT OPPORTUNITIES

### GOLF COURSE CONSTRUCTION

Project Managers, Shapers, Lay-out Specialists needed at once. Must be willing to travel. Fax resume and date available to:

(616) 547-7009

### JOB SEEKERS

For a fresh source of green industry job openings, subscribe for 3 months (6 issues), just \$19.95. **EMPLOYERS**—List your job openings, quickly and inexpensively. Call for details: 1-800-428-2474; Fax: 1-800-884-5198. **Farrell's JOBS IN HORTICULTURE**, 154 E. Chapel Ave.; Carlisle, PA 17013-3435. MC/Visa.

## SEEKING EMPLOYMENT/ OPPORTUNITY

Class A working Superintendent with construction and grow-in experience seeks equity position or purchase of a golf course in Ohio. **Contact: Mr. Nick Dragics; 229 East Home Road; Springfield, Ohio 45503.**

## REAL ESTATE

### GOLF COURSES WANTED

Southwest Golf is interested in purchasing or leasing golf courses.

Call Dick Campbell at  
 (505) 898-0960

### TEXAS GOLF COURSES

9 & 18 holes—Statewide. Some with extra land, development lots. Descriptive list available.

**TEXAS GOLF PROPERTIES**  
 1603 Lightsey—Austin, TX 78704  
 512/442-7105  
 Fax 512/442-1812

## BUSINESS SERVICES

### ATTENTION: GOLF COURSE OWNERS, OPERATORS, DEVELOPERS AND ARCHITECTS

Now you have the best available people at affordable prices. We will supply you the people for all aspects of golf course construction, turf grow-in, on site maintenance training with certified golf course superintendents anywhere in the world. We specialize in long and short term placement with full insurance coverage worldwide. Call or fax your project needs to:

Office: (714) 528-1185 ext. 27  
 or 45  
 Fax: (714) 524-7255  
 (714) 996-9387

**GreensWay Golf Company**  
 101 S. Kraemer Boulevard  
 Placentia, CA 92670

Looking to sell your product or service in an inexpensive forum? Try the classifieds—you'll be happy with the results! Call Mary Anderson at 1-800-636-7077 today.

## GOLF COURSE ACCESSORIES

### SOLID BRONZE SIGNAGE

- \* Yardage Markers
- \* Tee Signs
- \* 100, 150, 200
- \* Commemoratives

Laser Measuring\* Sprinkler Tagging  
 Yardage Books

**FROM TEE TO GREEN, INC.**  
 1-800-932-5223  
 Fax: 219-637-6874

## EMPLOYMENT OPPORTUNITIES FOR SALE



### Mid Tenn Turf, Inc.

**Services -**  
 \*Row Plant Sprigging \*Broadcast Sprigging  
 \*Sod Installation \*Hydro Seeding \*Laser Grading  
 \*Complete Athletic Field Construction & Renovation

**Sod Varieties -**  
 Available in 16" x 24" Slab or 42" x 120" Big Roll  
 \*Blended Fescue \*Vamont Bermuda  
 \*419 Bermuda \*Quickstand Bermuda  
 \*Tifway II Bermuda \*Myer Zoysia  
 Sprigs available in all Bermudas and Zoysia

Manchester (615) 728-0583  
 Nashville (615) 254-4728

Fax (615) 728-0168 Toll Free 1-800-782-4083  
 4698 New Bushy Branch Rd.  
 Manchester, Tennessee 37355

### ARCH STYLE STEEL BUILDINGS

For Cart & Equipment storage. Factory Direct from \$186 sq. ft. Save money on buildings in stock. 20X30; 25X40; 30X50; 40X76. Easy to erect.

### ARCHWAY STEEL BUILDINGS

1-800-344-2724

### PENNEAGLE SOD SALE

2+ acres grown on sterilized soil/sand media. Will vacuum cool for distant hauling. Call for low FOB price.

**DeLalio Sod Farms, Inc.; 652 Deer Park Ave.; Dix Hills, NY 11746. 1-800-326-4763.**

## LASER MEASURING

### LASER MEASURING and SPRINKLER YARDAGE MARKERS

We do it all. Laser measure & installation (same day) of custom metal yardage markers for all types of sprinkler heads. Warranty included. Also tee to green measurements, granite fairway markers. Sprinkler yardage markers may be purchased separately. Contact Nick for samples & references. **Fairway Yardage Designs, 800-36-TAGIT. (368-2448)**

## BUSINESS OPPORTUNITIES

### INSIDE INFO

Get the jump on your competition by subscribing to the *Golf Course News* Development Letter which tracks golf course projects under consideration across the nation. This twice-monthly newsletter is packed with news items detailing where and when projects will be undertaken, and by whom. Just \$195 for a year's subscription. For more information, contact: **Editor Peter Blais at 207-846-2295, ext.239**

### SAVE 40% OR MORE!

Buy personalized flags factory direct & save 40% or more. Flagpoles, tee markers, etc. also available. Fast personalized service guaranteed. Call toll free.

1-800-476-7005



**FOUR SEASONS GOLF COMPANY**

P.O. Box 78011  
 Greensboro, NC 27427

### IMPORTANT DATES TO REMEMBER REGARDING OUR UPCOMING OCTOBER ISSUE ON IRRIGATION AND PUMPING STATIONS:

Space Closing: **September 12th.**  
 Materials Deadline: **September 14th.**

Reserve your ad space now!

## CLASSIFIED ORDER FORM

### HOW TO ORDER A CLASSIFIED AD

**RATES:** \$75.00 per column inch (25-35 words, including a bold headline). Each additional 1/4 inch is \$18.75. If ordering a logo, please indicate and include an extra \$40.00; for a blind box, please indicate and include an extra \$15.00. All line ads must be prepaid. All rates are per insertion. For more information, call Mary Anderson at (813) 898-7077. To place your classified ad, mail this form with enclosed payment to:

**Golf Course News**  
 227 Second Ave. N.  
 St. Petersburg, FL 33701  
 or fax to: (813) 825-0923

Your Name \_\_\_\_\_  
 Company Name \_\_\_\_\_  
 Address \_\_\_\_\_  
 City \_\_\_\_\_ State \_\_\_\_\_  
 Zip \_\_\_\_\_ Daytime Phone \_\_\_\_\_

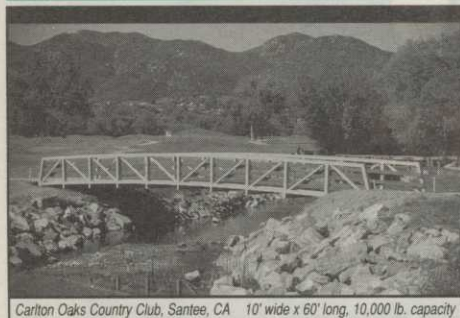
Payment enclosed, or  
 Charge to my credit card  
 Visa/MC \_\_\_\_\_ Exp. date \_\_\_\_\_  
 Am Ex \_\_\_\_\_ Exp. date \_\_\_\_\_  
 Signature \_\_\_\_\_

Please attach separate sheet of paper if extra space is needed.

Logo  
 Blind Box

# Golf Course Marketplace

To reserve space in this section,  
call Mary Anderson, 813-898-7077



Carlton Oaks Country Club, Santee, CA 10' wide x 60' long, 10,000 lb. capacity

## EXCEL

BRIDGE  
MANUFACTURING CO.

Golf Course Bridges are our specialty! We fabricate easy-to-install, pre-engineered spans and deliver them anywhere in the USA. Call today for a free consultation.

Our classic design, with a look that stands the test of time.

**800/548-0054** (Outside CA)

12001 SHOEMAKER AVENUE, SANTE FE SPRINGS, CA 90670  
310/944-0701 • FAX 310/944-4025

CIRCLE #150

## Birds or Animals a PROBLEM??

Scare them away with

## SHELLCRACKERS

a harmless, environmentally safe  
**PEST CONTROL DEVICE** that safely  
disrupts **EATING, NESTING & MATING** habits!  
For golf courses near residential areas use

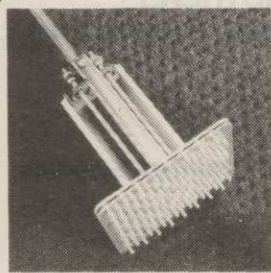
## WHISTLERS

a **SPECIALIZED MORE DISCREET** noisemaker.  
For orders & information call: **1-800-582-8843**

## JPF Distributors

9 Union Sq., Suite M184, Southbury, CT 06488

CIRCLE #151



## Over-Seed Winter Kill

With this tool you can  
punch 700 seed holes  
per minute on one inch  
spacing. It attaches to a  
cup cutter handle.

*Miltona*

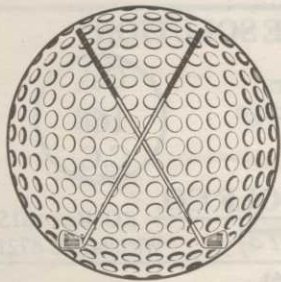
Order Yours Today  
Call 800-456-4351

TURF PRODUCTS P.O. Box 164 • Miltona, MN 56354

CIRCLE #152

## Formost Construction Co.

Serving the nation for over 30 years.



IRRIGATION SPECIALISTS

"Doing One Thing Well"

P.O. BOX 559  
TEMECULA, CALIFORNIA 92593

(909) 698-7270

FAX (909) 698-6170

STATE LIC. #267960

CIRCLE #153



Nationwide delivery • Install in less than two hours

## Golf Course Bridges!

**1-800-328-2047**

Thousands in use.  
Built to last.

Sponsor Member

**CONTINENTAL  
BRIDGE**

Route 5, Box 178, Alexandria, MN 56308 • (612) 852-7500

**NGF**  
NATIONAL GOLF FOUNDATION

B-DA-CL

CIRCLE #154

## NEW PRODUCTS

## Yamaha unveils the Ultima

Yamaha began production of its new golf car, the Ultima, on Sept. 1.

Available in gas and electric models, the Ultima features a comprehensive wrap-around Sentry Body Protection System with 5-mph bumpers front and back; a worm gear and pitman pin steering system that emulates power steering; a suspension system similar to that found on automobiles; wider and deeper seats; a textured steering wheel; and self-adjusting, reduced-maintenance brakes.

For more information call Yamaha USA at 800-843-3354, ext. 440.

CIRCLE #302

## Rake with hydrostatic drive

Smithco's new Sand Star bunker rake features a hydrostatic drive specially designed for high performance and low maintenance.

The hydrostatic system drives the two rear wheels through an Eaton transaxle and is linked directly to the engine throttle to automatically increase speed to meet all power demands.

The rake is powered by a Kohler Command gasoline engine with 12.5-hp, overhead valves and a 2.5-gallon fuel tank. Along with its silent-type muffler, the Sand Star provides low-noise operation.

Among its features are a tough, fiberglass body; 40-inch, front-mounted plow; 72-inch, three-phase finishing rake; 61-inch, center-mounted cultivator assembly; and a hydraulic lift assembly for operation of the implements.

For more information contact 215-688-4009.

CIRCLE #303

## LESCO adds three new seeds

LESCO Inc. has added three new turfgrass seeds—Wildwood Kentucky Bluegrass, PennPro Kentucky Bluegrass and Brittany Chewings Fescue.

Wildwood Kentucky Bluegrass yields a very dark green, relatively low, compact plant with excellent resistance to leaf spot, dollar spot and other major turf diseases.

PennPro Kentucky Bluegrass has a medium-green color, moderate-to-fine-texture leaf blade, excellent density and wear tolerance.

Brittany Chewings Fescue is a moderately dark green, very dense, fine-textured selection. It exhibits good disease and traffic tolerance and is excellent in areas that are shaded or under moderate drought stress. For more information telephone LESCO at 216-333-9250.

CIRCLE #305

## Fiddler's Elbow open for play

FAR HILLS, N.J. — Fiddler's Elbow Country Club's new 18-hole golf course, designed by Rees Jones, opened July 1. Addition of the par-72 Forest Course expands Fiddler's Elbow to 54 holes of golf, making it the largest in the state.

The Forest Course incorporates 200 acres of the 700-acre Fiddler's Elbow complex. Built on the highest land on the property, it offers panoramic views of Scholey's Mountain to the north and the Cushetunk Mountains to the southwest.

The first four holes play down and back up over open fields that have been transformed into mound-lined fairways, accented by strategically placed bunkers. Of the more than 100 bunkers on the course, 19 of them are on the par-5 3rd hole.

There will be four sets of tees on every hole, which will allow the course to play from 5,154 to 7,128 yards.

"I was fortunate to be working with a naturally beautiful site, one of the best I've ever had to work with," Jones said. "The rolling terrain is just about perfect...not too severe, but steep enough to provide a variety of gentle uphill and downhill shots. When you're playing through the woods, you feel like you're in a nature sanctuary, it's so quiet and peaceful."

## Slow-release from ParEx

In the past, polymers have been used to coat potassium nitrate or potassium sulfate, and sulfur used to coat potassium sulfate potassium chloride. Sulfur-coated products were unpredictable and often failed to provide extended longevity or caused damage. Coated products also have been relatively expensive because fertilizer materials used for polymer coating are costly and often are not round and smooth, resulting in additional expense.

Determined to find a solution to this dilemma, the research team at Vigoro Industries, Inc., recently developed new technology which provides a coatable potassium chloride substrate which gives a safe, slow-release form of potassium. It is now available as a component in Vigoro's Par Ex turf-grade fertilizers, and soon will be made available in other formulations.

For more information, contact Vigoro at 1-800-767-2855, extension 241.

CIRCLE #301

## Thompson rings for Commanders

Thompson Manufacturing Inc. has introduced a new stabilizer ring made of a bolt-on, high-strength plastic compound for its Commander series Rotor.

It is offered as a retrofit item for heads in the field, and will be offered as an option on new rotors. The ring is designed to keep the rotor at grade for a longer period of time, even with the heaviest of turf equipment driving over it, and still allow the small profile of the Commander on the field.

Installed just below grade, the turf still grows up the rotor. Its design makes it easy to install and offers an economical alternative to raising heads every couple years. For more information contact Thompson Manufacturing Co. Inc., 5075 Edison Ave., Chino, Calif. 91708 or telephone 909-591-4851.

CIRCLE #304

## Parkway's new Algae Rid

Parkway Research Corp.'s latest product, Algae Rid, is a liquid aquatic algacide that is both effective on a broad range of aquatic algae and safe to animal life.

Algae Rid is also compatible with Parkway's lake colorants Blue Lagoon and Blue Lagoon WSB.

To receive a brochure or samples call 800-442-9821, or write Parkway Research Corp., 13802 Chrisman Rd., Houston, Texas 77039.

CIRCLE #306

## Hot spots: Fact or Fiction

Continued from page 54

you've got a lot of flat flood plains."

Norton and the NGF have tried to move would-be developers away from hot spots and into more practical analyses. The NGF offers an executive summary which includes questions to ask when conducting market research and feasibility studies. For example, when segmenting a market, developers should realize:

- Green fees vary with every market. High-end fees in Boston are \$40-45, while the same golf experience will cost you \$20-25 in Nebraska. Do the research before you decide which market to enter.

- With feasibility studies on rounds played, evaluate the market based on competing green fees and the support (rounds played) you expect. This sounds basic, but you would be amazed, Norton said, how many developers fail to do it.

- Green fees are an approximation of amenity level. But an approximation of green fees (in a business plan) can't be made until amenities at competing facilities are examined. Again, a simple but oft-overlooked factor.

**September**

- 8-9 — *Southwest Horticultural Trade Show in Phoenix.* Contact 602-966-1610.
- 13 — *Vermont/N.H. GCSA Annual Joint Meeting in Fairlee, Vt.*
- 18 — *CGSA/GCSAA National Seminar Program on the Microbiology of Turfgrass Soils in Aylmer, Quebec, Canada.* Contact 913-841-2240.
- 18-21 — *Florida Turfgrass Ass'n. 42nd Annual Trade Conference & Show in Ft. Lauderdale.* Contact 800-882-6721.
- 20-22 — *Virginia Tech Turf and Landscape Field Days in Blacksburg, Va.* Contact J.R. Hall III at 703-231-9736.
- 26-29 — *Northwest Turf Conference in Gleneden, Ore.* Contact 206-754-0825.

**October**

- 3-Dec. 10 — *Rutgers Professional Turf Management Golf Turf Management School in New Brunswick, N.J.* Contact 908-932-9271.
- 5-6 — *So. Calif. Turfgrass Expo in Costa Mesa.* Contact 714-951-8547.
- 12-13 — *West Texas Turfgrass Conference in Snyder.* Contact 806-354-8447.
- 12-14 — *Southwest Annual Turf Conference in Ruidoso, N.M.* Contact 505-275-2576.
- 29-30 — *Southwest Outdoor Power Equipment Show in Arlington, Texas.* Contact 512-443-7999.
- 29-Nov. 2 — *Georgia GCSA Annual Meeting in Savannah.* Contact Karen White at 706-769-4076.

**November**

- 1-4 — *6th Annual West Virginia/GCSA Turf Conference & Show in Morgantown.* Contact David Tennant at 304-594-1541.
- 6-9 — *15th Annual International Irrigation Exposition and Technical Conference in Atlanta.* Contact 703-573-3551.
- 8-11 — *Turf & Grounds Exposition in Rochester, N.Y.* Contact 800-873-TURF.
- 11-12 — *Golf Course Expo in Orlando, Fla.* Contact the Golf Course News Conference Group at 207-846-0600.
- 13-16 — *28th Annual Carolinas GCSA Conference and Show in Myrtle Beach, S.C.* Contact 800-476-GCSA.
- 14-17 — *Green Industry Expo in St. Louis.* Contact 404-973-2019.
- 17-19 — *Tree Care Industry Expo '94 in Rochester, N.Y.* Contact 800-733-2622.
- 18-20 — *National Golf Foundation Golf Summit '94 in Phoenix.* Contact 407-744-6006.
- 29-Dec. 1 — *New Jersey Turfgrass Association Expo in Atlantic City.* Contact 908-821-7134.
- 29-Dec. 1 — *Rocky Mountain Turf Conference and Trade Show in Denver.* Contact Julia Marie at 303-688-3440.

**December**

- 5-7 — *Texas Turfgrass Conference and Show in Fort Worth.* Contact 806-354-8447.
- 5-8 — *Kansas Turfgrass Conference in Topeka.*

**1995**

**January**

- 2-March 10 — *Rutgers Professional Golf Turf Management School in New Brunswick, N.J.* Contact 908-932-9271.
- 3-5 — *Wisconsin Turfgrass & Green Industry EXPO in Madison.* Contact 608-262-1490.
- 9-20 — *10th Annual Cornell University Turfgrass Short Course in Ithaca, N.Y.*   
Continued on next page

# Golf Course Marketplace

To reserve space in this section, call Mary Anderson, 813-898-7077

Exceptional Software...

**SCMS** Superintendents Compliance / Management System

"The Choice of Today's Grounds Managers"

From Equipment Tracking and Employee Training... To Compliance Reports and Chemical Records

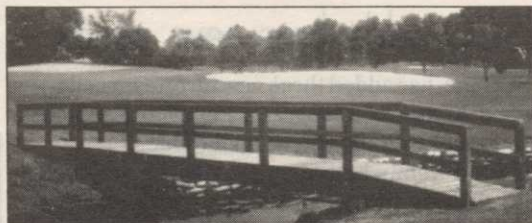
Free Demonstration Diskettes

Call Toll Free (800) 472 8882

Environmental Compliance Systems, Incorporated  
21 North Avenue Lake Forest IL 60045

CIRCLE #155

**YORK**  
BRIDGE CONCEPTS  
A Division of Pelican Marine Enterprises, Inc.



- On-Site Construction • Consulting and Design Capabilities
  - Certified Engineered Drawings Available
- 1426 W. Busch Blvd. • Tampa, FL 33612 • (800) 226-4178

CIRCLE #156

Keep Your Divot Seed Mixture Where It Is Used ...



... in Divot Seed & Soil tee buckets next to the tee markers. Available in Cedar or Redwood slats and with companion Trash™ debris buckets.



Ask Your Golf Course Distributor for INNOVATIVE MAINTENANCE PRODUCTS

From

*Master of the Links*

P.O. Box 283, Lockport, IL 60441-0283  
(815) 723-4444 • Fax (815) 723-4485



CIRCLE #157



**QUAIL VALLEY FARM, INC.**

"Growers of Quality Turf Grasses"

- Meyer Z-52 Zoysia
- El Toro Zoysia
- Tall Fescue
- Sprigs
- Tifway II
- Tifdwarf
- Big Rolls
- Midlawn (the new transition zone bermuda grass!)

(800) 666-0007

P.O. Box 5508  
Little Rock, AR 72215  
(501) 280-0763



CIRCLE #158

**ACCU-GAGE™**

NEW! LIFETIME WARRANTY ON BARS WITH DURA-COAT™



ACCU-GAGE is a precision tool for making highly accurate height-of-cut measurements on greens mowers or other precision mowers.

AVAILABLE IN 15", 18", and 24" bars.

Our LIGHTWEIGHT and RIGID aluminum bars are now treated with DURA-COAT. DURA-COAT wears better than tool steel and enables us to offer this unique LIFETIME WARRANTY.

To order call 1-800-253-2112 or fax 1-313-429-3985.

PRECISION TOOL PRODUCTS CO.  
7836 Bethel Church Rd. • Saline, MI 48176

CIRCLE #159



**PAVELEC BROTHERS GOLF COURSE CONSTRUCTION CO., INC.**

- ✓ New Construction
- ✓ Renovation
- ✓ Field Drainage Systems

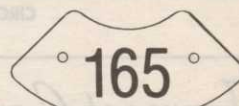
TONY PAVELEC  
(201) 667-1643  
EMIL PAVELEC  
(201) 939-6182

98 Evergreen Ave.  
Nutley, NJ 07110

CIRCLE #160

ENGRAVED YARDAGE LABELS

- Bright colors • Fasteners included
- Orders quickly shipped UPS



Free Samples!

NEW ITEM... "THE SOLUTION"

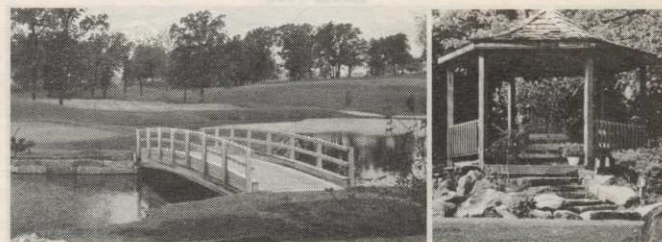
For Areas Without Sprinklers. Put Your Message Plus Yardage Anywhere.



**THE YARD EDGE GOLF CO.**  
1-800-284-YARD (9273)

P.O. Box 13159  
Wichita, KS 67213

CIRCLE #161



Laminated Wood Pedestrian & Vehicular BRIDGES & SHELTERS

Order Direct From The Leading Manufacturer in U.S.

- Complete Prefabricated Packages
- Direct Distribution Throughout the U.S.
- Ready for Fast Erection
- Custom Design & Engineering

**UNIT STRUCTURES**  
SPECIALTY PRODUCTS GROUP, INC.

CALL 1-800-777-UNIT

Morrisville, NC 27560  
Tel. 919/467-6151  
FAX 919/469-2536


CIRCLE #162

# Golf Course Marketplace

To reserve space in this section, call Mary Anderson, 813-898-7077


RS#	Advertiser	Page
127	The Andersons	37
121	Carroll Childers	30
101	Cedar Chemical	2
105	Ciba	5
111	Ciba	16
116	Ciba	24
134	Ciba *	46
107	Club Car	6-7
138	Club Car	54
166	Colorado Lining Co.	53
125	Contech Construction Products	36
154	Continental Bridge	51
155	Environmental Compliance Systems	52
150	Excel Bridge Mfg.	51
103	Fore Par	3
153	Formost Construction Co.	51
165	Furness Golf Construction	53
114	Golf Course Expo	20-21
136	Griffin Industries/Nature Safe	48
139	ISK Biosciences Corp.	55
113	Jacklin Seed Co.	18-19
140	Jacobsen	56
169	Jesco Products/Pinhigh	53
108	John Deere	8-9
132	John Deere Credit	42-43
151	JPF Distributors	51
123	Kirby Markers	34
157	Master of the Links	52
135	Milorganite	47
152	Miltona Turf Products	51
128	National Mower	38
112	Pallen Enterprises	17
124	Par Aide	35
129	Partac	38
160	Pavelec Bros. Construction	52
167	Precision Small Engine	53
168	Precision Small Engine	53
159	Precision Tool Prod. Co.	52
104	Pursell Industries	4
158	Quail Valley Turf Farm	52
141	Ransomes, Ransomes America Corp.	*46
120	Regal Chemical	29
131	Regal Chemical	40
115	Sandoz	23
117	Sandoz	25
137	Sandoz	49
126	Southern Corp. Promo.	36
122	Standard Golf	32
163	Steadfast Bridge Co.	53
119	Tee & Green Sod	28
110	Toro Comm'l. Prod. Div.	14-15
118	Toro Comm'l. Prod. Div.	26-27
170	Trims International Software	53
164	Trion Lifts	53
	Golf Asia '95	45
130	Turflite, Inc.	39
162	Unit Structures	52
102	United Soil Blenders	3
109	Verti-Drain/Emrex	12
161	Yard Edge	52
156	York Bridge Concepts	52

P. O. Box 806  
201 40th St. NE  
FORT PAYNE, AL 35967



**"CROSSING THE NATION WITH BRIDGES YOU CAN DEPEND ON"**

ENGINEERED AND FABRICATED TO FIT YOUR GOLF COURSE NEEDS, FROM THE GATEWAY (PICTURED) TO THE ORIENTAL "EDO" SERIES. PEDESTRIAN, GOLF CART AND VEHICULAR BRIDGES. SINGLE SPANS TO 200 FEET AVAILABLE.



CALL TODAY FOR FREE BROCHURES  
**1-800-749-7515** FABRICATED READY FOR INSTALLATION

CIRCLE #163

**NEW Flymo**

- New GCT 20
- Patented & Proven Safety Cutting System
- New JLO Engine with One Year Warranty



**PRECISION SMALL ENGINE CO.**

FOR MORE DETAILS CALL  
**1-800-345-1960 or 305-974-1960**

CIRCLE #167

**FREE VIDEO**

See for yourself how TRION'S **VERSATILITY ACCESSIBILITY and SAFETY** will increase your mechanic's productivity.



**CALL TODAY!**

**TRION** P.O. Box 697  
Greeley, CO 80632

Your Partner in Productivity **800-426-3634**

CIRCLE #164

**GOLF CAR PARTS**

LOWEST PRICES GUARANTEED  
ON OVER **1700** QUALITY REPLACEMENT PARTS!



SHIPPED AIR FREIGHT AT NO EXTRA CHARGE

CALL FOR YOUR FREE CATALOG TODAY!

**PRECISION • 800-345-1960**

CIRCLE #168



**Furness Golf Construction, Inc.**  
TIM FURNESS, PRESIDENT

Turn-Key Golf Course Construction  
Statewide • Nationwide • Worldwide

QUALITY IS OUR MAIN CONCERN

**(616) 547-6133**

1101 Bridge Street, Charlevoix, Michigan 49720

CIRCLE #165

**Quality with a Twist**

A twist of our easy off lid gives you quick access to Pinhigh's quality reel sharpening compound.



**pinhigh** reel sharpening compound

Call 1 (800) 422-4748

CIRCLE #169

**POND & LAKE LINERS**

- ◆ Buy Direct from fabricator 20, 30, 40 mil PVC, Hypalon, HDPE, & VLDPE.
- ◆ Custom fabricated panels of up to 25,000 S.F. available.
- ◆ Material Only, Material & Supervision, or Complete Installation service.

**1-800-524-8672**

Colorado Lining Company, 1062 Singing Hills Road, Parker, CO 80134. 303-841-2022 Fax 303-841-5780

CIRCLE #166

**TRIMS Grounds Management Software**

TRIMS is the choice of Golf Course Superintendents worldwide for Quality Grounds Management Software.

TRIMS allows you to organize, track, report and manage people, equipment, expenses and time. TRIMS provides instant access to information allowing you to make sound management decisions.

Call for a FREE Demo  
(800) 608-7467 • (602) 277-8027  
Indicate 5 1/4" 3 1/2" or 3 1/8" disk



TRIMS Software International  
3110 N. 19th Ave. - Suite 190  
Phoenix, AZ 85015

CIRCLE #170

\* Appears in regional editions.

CALENDAR

Continued from previous page

tact 607-255-17789.

11-13 — North Carolina Turfgrass Conference and Show in Charlotte. Contact 910-695-1333.

23-26 — 35th Virginia Turf and Landscape Conference and Trade Show in Richmond. Contact Bruce Tharp at 804-340-3473.

February

20-27 — GCSAA International Conference and Show in San Francisco.\*

24-26 — 7th Annual West Michigan Golf Show in Grand Rapids. Contact 616-247-1931.

March

11-14 — 46th Canadian Turfgrass Conference & Trade Show in Ottawa, Ontario. Contact 800-387-1056.

\* For more information contact the GCSAA Education Office at 800-472-7878 or 913-841-2240.