

# Golf Course Marketplace

To reserve space in this section, call Mary Anderson, 813-898-7077

## ADVERTISING INFO. REAL ESTATE

### 1994 RATES

|                   | 2X      | 6X      | 12X     |
|-------------------|---------|---------|---------|
| Per col. inch:    | \$75.00 | \$65.00 | \$50.00 |
| Add-on per 1/4":  | \$18.75 | \$16.25 | \$12.50 |
| Logo incl. in ad: | \$40.00 | \$40.00 | \$40.00 |

- Rates are per insertion.
- Minimum 2-time insertion.
- Prepayment is required.

Send prepayment & ad copy to:  
**GOLF COURSE NEWS**  
 227 Second Ave. N.  
 St. Petersburg, FL 33701  
 (813) 898-7077  
 Fax (813) 825-0923

### GOLF COURSES WANTED

Southwest Golf is interested in purchasing or leasing golf courses.

Call Dick Campbell at  
 (505) 898-0960

### TEXAS GOLF COURSES

9 & 18 holes—Statewide. Some with extra land, development lots. Descriptive list available.

### TEXAS GOLF PROPERTIES

1603 Lightsey—Austin, TX 78704  
 512/442-7105  
 Fax 512/442-1812

### FOR SALE

#### VERTI-DRAIN 305-200 H

Like new, depth up to 16"; 79" wide. Use on greens, tees, fairways, roughs and athletic fields. New price: \$24,500; sale price: \$16,500. Includes delivery up to 1,000 miles. Call 414-532-4186. Wisconsin.

#### PIPE LOCATOR

Inexpensive! Locates, traces underground drain, water pipelines of clay, PVC, ABS, steel & cement. Finds sprinklers, valves & clogs. Used by over 1,000 golf courses. Bloch & Co., Box 18058, Cleveland, OH 44118. (216) 371-0979.

## BUSINESS SERVICES

### ATTENTION: GOLF COURSE OWNERS, OPERATORS, DEVELOPERS AND ARCHITECTS

Now you have the best available people at affordable prices. We will supply you the people for all aspects of golf course construction, turf grow-in, on site maintenance training with certified golf course superintendents anywhere in the world. We specialize in long and short term placement with full insurance coverage worldwide. Call or fax your project needs to:

Office: (714) 528-1185 ext. 27 or 45  
 Fax: (714) 524-7255; (714) 996-9387

GreensWay Golf Company; 101 S. Kraemer Boulevard; Placentia, CA 92670

## GOLF COURSE ACCESSORIES

### SOLID BRONZE SIGNAGE

- \* Yardage Markers
- \* Tee Signs
- \* 100, 500, 200
- \* Commemoratives

Laser Measuring\*Sprinkler Tagging  
 Yardage Books

### FROM TEE TO GREEN, INC.

1-800-932-5223  
 Fax: 219-637-6874

### SAVE 40% OR MORE!

Buy personalized flags factory direct & save 40% or more. Flagpoles, tee markers, etc. also available. Fast personalized service guaranteed. Call toll free.

1-800-476-7005



**FOUR SEASONS  
 GOLF COMPANY**

P.O. Box 78011  
 Greensboro, NC 27427

## EMPLOYMENT OPPORTUNITIES

### GOLF COURSE CONSTRUCTION

Project Managers, Shapers, Lay-out Specialists needed at once. Must be willing to travel. Fax resume and date available to:

(616) 547-7009

## SEEKING EMPLOYMENT

### POSITION WANTED

**SR. PROJECT MANAGER—GOLF CONSTRUCTION.** 12 years expertise includes: A. Large projects for name architects. B. Country club renovation. C. Diplomacy— with arch, owner, D.E.R., local and state authorities. D. Fast tract quality production, plus administration. E. Experience—helps avoid project pitfalls and increases profits. Will travel. Considerable industry contacts available from shapers to experience labors that can supplement your project if needed. **Contact: G.C.M. Fax: 713-292-0457. Write: P.O. Box 8802; Spring, Texas 77380.**

### Mid Tenn Turf, Inc.

**Services—**  
 \*Row Plant Sprigging \*Broadcast Sprigging  
 \*Sod Installation \*Hydro Seeding \*Laser Grading  
 \*Complete Athletic Field Construction & Renovation

**Sod Varieties—**  
 Available in 16" x 24" Slab or 42" x 120" Big Roll  
 \*Blended Fescue \*Vamont Bermuda  
 \*419 Bermuda \*Quickstand Bermuda  
 \*Tifway II Bermuda \*Myer Zoysia

*Sprigs available in all Bermudas and Zoysia*  
 Manchester (615) 728-0583  
 Nashville (615) 254-4728  
 Fax (615) 728-0168 Toll Free 1-800-782-4083  
 4698 New Bushy Branch Rd.  
 Manchester, Tennessee 37355

### ARCH STYLE STEEL BUILDINGS

For Cart & Equipment storage. Factory Direct from \$186 sq. ft. Save money on buildings in stock. 20X30; 25X40; 30X50; 40X76. Easy to erect.

### ARCHWAY STEEL BUILDINGS

1-800-344-2724

### PENNEAGLE SOD SALE

2+ acres grown on sterilized soil/sand media. Will vacuum cool for distant hauling. Call for low FOB price. **DeLalio Sod Farms, Inc.; 652 Deer Park Ave. Dix Hills, NY 11746. PH #: 1-800-326-4763**

### POND LINERS

Buy direct from fabricator 20 & 30 mil. P.V.C. Made to order. Under 20 cents per sq. ft. Installation or supervision available. Call...

**COLORADO LINING COMPANY**  
 800-524-8672 or 303-841-2022

### FOR SALE: A PAIR!

**Two Cushman Turf Trucks & Golf Ball Retrieving Roller.** Complete working set-up of recovery equipment as seen in the July issue of *Golf Course News*. \$8,500 for both. Interested parties call: 1-800-238-0009.

## LASER MEASURING

### LASER MEASURING and SPRINKLER YARDAGE MARKERS

We do it all. Laser measure & installation (same day) of **custom metal yardage markers** for all types of sprinkler heads. Warranty included. Also tee to green measurements, granite fairway markers. Sprinkler yardage markers may be purchased separately. Contact Nick for samples & references. **Fairway Yardage Designs, 800-36-TAGIT. (368-2448)**

## CLASSIFIED ORDER FORM

### HOW TO ORDER A CLASSIFIED AD

**RATES:** \$75.00 per column inch (25-35 words, including a bold headline). Each additional 1/4 inch is \$18.75. If ordering a logo, please indicate and include an extra \$40.00; for a blind box, please indicate and include an extra \$15.00. All line ads must be prepaid. All rates are per insertion. For more information, call Mary Anderson at (813) 898-7077. To place your classified ad, mail this form with enclosed payment to:

**Golf Course News**  
 227 Second Ave. N.  
 St. Petersburg, FL 33701  
 or fax to: (813) 825-0923

Your Name \_\_\_\_\_  
 Company Name \_\_\_\_\_  
 Address \_\_\_\_\_  
 City \_\_\_\_\_ State \_\_\_\_\_  
 Zip \_\_\_\_\_ Daytime Phone \_\_\_\_\_

- ☐ Payment enclosed, or  
☐ Charge to my credit card

☐ Visa/MC Exp. date \_\_\_\_\_  
☐ Am Ex Exp. date \_\_\_\_\_

Signature \_\_\_\_\_

Please attach separate sheet of paper if extra space is needed.

- ☐ Logo  
☐ Blind Box



# Golf Course Marketplace

To reserve space in this section, call Mary Anderson, 813-898-7077

P. O. Box 806  
201 40th St. NE

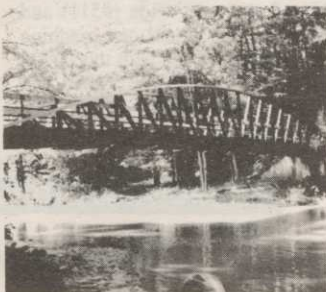
FORT PAYNE, AL  
35967



"CROSSING THE NATION WITH  
BRIDGES YOU CAN DEPEND ON"

ENGINEERED AND FABRICATED TO  
FIT YOUR GOLF COURSE NEEDS,  
FROM THE KEYSTONE (PICTURED)  
TO THE ORIENTAL "Edo" SERIES.  
PEDESTRIAN, GOLF CART AND  
VEHICULAR BRIDGES. SINGLE  
SPANS TO 200 FEET AVAILABLE.

CALL TODAY FOR FREE BROCHURES  
**1-800-749-7515**



FABRICATED READY FOR INSTALLATION

CIRCLE #140

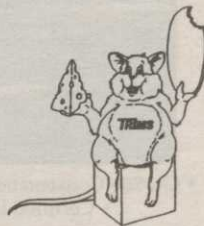
## TRIMS Grounds Management Software

TRIMS is the choice of Golf Course Superintendents world-  
wide for Quality Grounds Management Software.

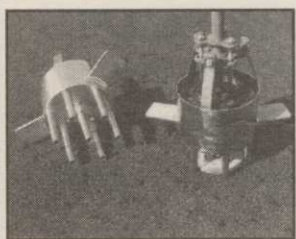
TRIMS allows you to organize, track, report and manage  
people, equipment, expenses and time. TRIMS provides  
instant access to information allowing you to make sound  
management decisions.

Call for a FREE Demo  
(800) 608-7467 • (602) 277-8027  
Indicate 5 1/4" or 3 1/2" disk

TRIMS Software International  
3110 N. 19th Ave. - Suite 190  
Phoenix, AZ 85015



CIRCLE #143



**Milona**

## Aerify Hot Spots Or

eliminate high areas  
in your turf repairs.  
Clean up of irrigation  
work is done easier  
and better with the  
**Handi-Aerifier.**

Call 800-456-4351

TURF PRODUCTS

P.O. Box 164 • Milona, MN 56354

CIRCLE #141

## ACCU-GAGE™

NEW!  
LIFETIME  
WARRANTY  
ON BARS WITH  
DURA-COAT™



ACCU-GAGE is a precision  
tool for making highly  
accurate height-of-cut  
measurements on greens  
mowers or other precision  
mowers.

AVAILABLE IN 15", 18", and 24" bars.

Our LIGHTWEIGHT and RIGID aluminum bars are now treated  
with DURA-COAT. DURA-COAT wears better than tool steel and  
enables us to offer this unique LIFETIME WARRANTY.

To order call 1-800-253-2112 or fax 1-313-429-3985.

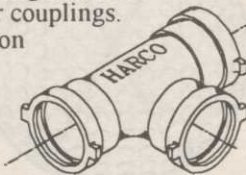
PRECISION TOOL PRODUCTS CO.  
7836 Bethel Church Rd. • Saline, MI 48176

CIRCLE #142

## HARCO DUCTILE IRON FITTINGS FOR GOLF COURSE IRRIGATION SYSTEMS

Sizes 2" through 12", all configurations  
including "knock-on" repair couplings.  
High Strength, high corrosion  
resistance.

The Harrington Corporation  
P.O. Box 10335  
Lynchburg, Va 24506  
804-845-7094 Fax 845-8562



CIRCLE #144

## DIRTY BIRDS a PROBLEM??

Scare them away with harmless,  
**APPROVED, ENVIRONMENTALLY SAFE  
BIRD CONTROL NOISEMAKERS**

**UNIQUE, MORE DISCREET PRODUCTS  
ESPECIALLY FOR GOLF COURSES**  
near residential areas are available.

**We CAN help solve your bird problems.  
CALL TODAY: 1-800-582-8843  
JPF Distributors**

CIRCLE #145

## ENGRAVED YARDAGE LABELS

• Bright colors • Fasteners included  
• Orders quickly shipped UPS

**Free Samples!**

## NEW ITEM... "THE SOLUTION"

For Areas Without Sprinklers.  
Put Your Message Plus Yardage  
Anywhere.



**THE YARD EDGE GOLF CO.**  
1-800-284-YARD (9273)

P.O. Box 13159  
Wichita, KS 67213

CIRCLE #146

## October

3-Dec. 10 — Rutgers Professional Turf  
Management Golf Turf Management  
School in New Brunswick, N.J. Contact  
908-932-9271.

5-6 — So. Calif. Turfgrass Expo in Costa  
Mesa. Contact 714-951-8547.

12-13 — West Texas Turfgrass Confer-  
ence in Snyder. Contact 806-354-8447.

12-14 — Southwest Annual Turf Confer-  
ence in Ruidoso, N.M. Contact 505-275-  
2576.

29-30 — Southwest Outdoor Power Equip-  
ment Show in Arlington, Texas. Contact  
512-443-7999.

29-Nov. 2 — Georgia GCSA Annual Meet-  
ing in Savannah. Contact Karen White at  
706-769-4076.

## November

1-4 — 6th Annual West Virginia/GCSA  
Turf Conference & Show in Morgantown.  
Contact David Tennant at 304-594-1541.

6-9 — 15th Annual International Irriga-  
tion Exposition and Technical Conference  
in Atlanta. Contact 703-573-3551.

8-11 — Turf & Grounds Exposition in Roch-  
ester, N.Y. Contact 800-873-TURF.

10-12 — Golf Course Expo in Orlando, Fla.  
Contact the Golf Course News Confer-  
ence Group at 207-846-0600.

13-16 — 28th Annual Carolinas GCSA  
Conference and Show in Myrtle Beach,  
S.C. Contact 800-476-GCSA.

14-17 — Green Industry Expo in St. Louis.  
Contact 404-973-2019.

17-19 — Tree Care Industry Expo '94 in  
Rochester, N.Y. Contact 800-733-2622.

18-20 — National Golf Foundation Golf  
Summit '94 in Phoenix. Contact 407-744-  
6006.

29-Dec. 1 — New Jersey Turfgrass Associa-  
tion Expo in Atlantic City. Contact 908-  
821-7134.

29-Dec. 1 — Rocky Mountain Turf Confer-  
ence and Trade Show in Denver. Contact  
Julia Marie at 303-688-3440.

29-Dec. 1 — NJ Turf Expo in Atlantic  
City. Contact 908-821-1734.

## December

5-7 — Texas Turfgrass Conference and  
Show in Fort Worth. Contact 806-354-8447.

5-8 — Kansas Turfgrass Conference in  
Topeka.

## 1995

## January

2-March 10 — Rutgers Professional Golf  
Turf Management School in New  
Brunswick, N.J. Contact 908-932-9271.

3-5 — Wisconsin Turfgrass & Green In-  
dustry EXPO in Madison. Contact 608-  
262-1490.

9-20 — 10th Annual Cornell Turfgrass  
Short Course in Ithaca, N.Y. Contact 607-  
255-17789.

11-13 — North Carolina Turfgrass Confer-  
ence and Show in Charlotte. Contact 910-  
695-1333.

17-19 — Cook College IPM short course at  
New Brunswick, N.J. Contact 908-932-9271.

## February

20-27 — GCSAA International Conference  
and Show in San Francisco.\*

\* For more information contact the GC-  
SAA Education Office at 800-472-7878 or  
913-841-2240.

## LIST RENTAL

## GOLF COURSE NEWS

THE NEWSPAPER FOR THE GOLF COURSE INDUSTRY

...offers you the opportunity to reach the  
decision makers at thousands of  
golf facilities with an exclusive mailing list.

Call Mary Anderson for details.

**813-898-7077**



## Purdy gives Jersey a Pebble Beach of its very own

COLTS NECK TOWNSHIP, N.J.—Pebble Beach Golf Club, a privately-run public course, should ease the plight of golfers jousting for tee times on four overcrowded county-run courses.

The 18-hole par 71 course being developed by Raymond Longobardi and John Mattaliano should be open by the spring of 1996. Veteran course designer Hal Purdy envisions the first nine as a northern, wooded type of course, and the back nine having the Scottish feel of rolling hills and mounds.

Mayor Thomas McClintock encouraged the developers to expand their original idea of a smaller so-called executive course to a full-sized links.

## Wampanoag casino supplants course

Continued from page 3

Brockton, Fall River, Boston and Providence, R.I. — not to mention the millions of summer tourists who frequent nearby Cape Cod — make New Bedford an ideal gambling locale.

The city agreed to sell the Wampanoags the 280 acres for \$3.35 million, with \$100,000 paid up front; \$900,000 to be paid when the land is officially transferred to the tribe; and \$2.35 million due with interest within seven years.

The deal is contingent on the city dissolving its lease with the current tenant, course operator Whaling City Golf Club, Inc. It seems Whaling City is holding out for a \$2 million buyout of its lease and has threatened to block environmental tests needed for approval of the Wampanoags' proposed casino.

The firm has scoffed at the city's \$800,000 buyout offer, and no one from Whaling City is speaking to the press.

Thomas Wynn, the Wampanoags' attorney, isn't worried by the Whaling City tactics.

"Clearly, the eminent domain process is well-known to everybody," Wynn said. "I think that would resolve any problem with regards to testing."

## Aquagenix makes public offering

Continued from page 37

fish, plants aquatic materials and provides mechanical harvesting.

According to Chesler, the firm intends to use net proceeds from the offering to purchase equipment and inventory, establish additional customer service offices, expand marketing efforts and repay debts. The balance of the proceeds will be used for working capital and general corporate purposes.

The underwriter for the company's offering is Whale Securities Co. L.P., of New York.

# Golf Course Marketplace

To reserve space in this section, call Mary Anderson, 813-898-7077

## YORK BRIDGE CONCEPTS

A Division of Pelican Marine Enterprises, Inc.

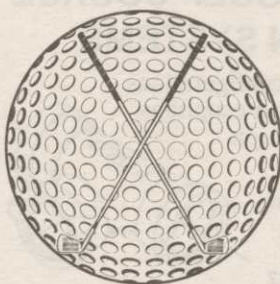


- On-Site Construction • Consulting and Design Capabilities
  - Certified Engineered Drawings Available
- 1426 W. Busch Blvd. • Tampa, FL 33612 • (800) 226-4178

CIRCLE #147

## Formost Construction Co.

Serving the nation for over 30 years.



IRRIGATION SPECIALISTS

"Doing One Thing Well"

P.O. BOX 559  
TEMECULA, CALIFORNIA 92593

(909) 698-7270

FAX (909) 698-6170

STATE LIC. #267960

CIRCLE #148



## Flymo®

- New GCT 20
- Patented & Proven Safety Cutting System
- New JLO Engine with One Year Warranty



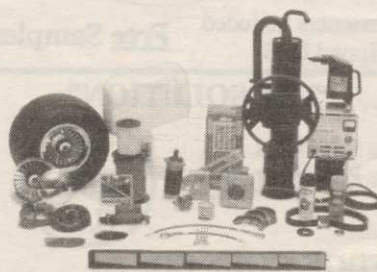
PRECISION  
SMALL ENGINE CO.

FOR MORE DETAILS CALL  
1-800-345-1960 or 305-974-1960

CIRCLE #149

## GOLF CAR PARTS

LOWEST PRICES GUARANTEED  
ON OVER 1700 QUALITY REPLACEMENT PARTS!



SHIPPED AIR  
FREIGHT AT  
NO EXTRA  
CHARGE

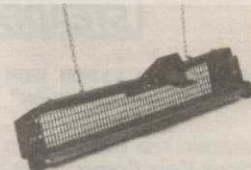
CALL FOR  
YOUR FREE  
CATALOG  
TODAY!

PRECISION • 800-345-1960

CIRCLE #150

## GET THE ROCKS OUT...

and the pine cones, and other debris. The Sand Trap Renovator comes in 2 hand sizes: 12" wide (#511) and 24" wide (#512) and one machine size 4' wide for use with the TORO 5000, JOHN DEERE 1200, and Smithco units (#555). Insert hardware cloth for smaller particles.



Ask Your Golf Course Distributor for  
INNOVATIVE MAINTENANCE PRODUCTS

From

Master of the Links

P.O. Box 283, Lockport, IL 60441-0283  
(815) 723-4444 • Fax (815) 723-4485



CIRCLE #151



## QUAIL VALLEY FARM, INC.

"Growers of Quality Turf Grasses"

- Meyer Z-52 Zoysia
- El Toro Zoysia
- Tall Fescue
- Sprigs
- Tifway II
- Tifdwarf
- Big Rolls

• Midlawn

(the new transition zone bermuda grass!)

(800) 666-0007

P.O. Box 5508  
Little Rock, AR 72215  
(501) 280-0763



CIRCLE #152

## Inside Info

Get the jump on your competition by subscribing to the  
**Golf Course News Development Letter**

This twice-monthly newsletter...

- tracks golf course projects under consideration across the nation
- is packed with news items detailing where and when projects will be undertaken, and by whom
- is just \$195 for a year's subscription

For more information contact  
Editor Peter Blais at 207/846-0600



Nationwide delivery • Install in less than two hours

## Golf Course Bridges!

1-800-328-2047

CONTINENTAL  
BRIDGE

Route 5, Box 178, Alexandria, MN 56308 • (612) 852-7500

Thousands in use.  
Built to last.

Sponsor Member



B-DA-CL

CIRCLE #153



# Golf Course Marketplace

To reserve space in this section, call Mary Anderson, 813-898-7077

RS# Advertiser ..... Page

|     |  |       |
|-----|--|-------|
| 114 | The Andersons .....                    | 17    |
| 108 | Ciba * .....                           | 12    |
| 105 | Club Car .....                         | 6-7   |
| 125 | Club Car .....                         | 32    |
| 153 | Continental Bridge .....               | 44    |
| 137 | E-Z-GO .....                           | 48    |
| 158 | Environmental Compliance Systems ..... | 45    |
| 103 | Environmental Protection, Inc. ....    | 3     |
| 154 | Excel Bridge Mfg. ....                 | 45    |
| 101 | Flowtronex/PSI .....                   | 2     |
| 134 | Fore Par .....                         | 41    |
| 148 | Formost Construction Co. ....          | 44    |
| 157 | Furness Golf Construction .....        | 45    |
| 118 | Golf Course Expo .....                 | 20-21 |
| 160 | Greenscape Pump Services .....         | 45    |
| 144 | The Harrington Corporation .....       | 43    |
| 136 | ISK Biosciences Corp. ....             | 47    |
| 107 | Jacobsen .....                         | 10-11 |
| 155 | Jesco Products/Pinhigh .....           | 45    |
| 104 | John Deere .....                       | 4-5   |
| 126 | John Deere Credit .....                | 34-35 |
| 145 | JPF Distributors .....                 | 43    |
| 128 | Kirby Markers .....                    | 38    |
| 106 | Kubota .....                           | 9     |
| 151 | Master of the Links .....              | 44    |
| 117 | Melex USA .....                        | 19    |
| 113 | Melex USA .....                        | 17    |
| 111 | Melex USA .....                        | 15    |
| —   | Miles Inc. ....                        | 24-25 |
| 115 | Milorganite .....                      | 18    |
| 141 | Milona Turf Products .....             | 43    |
| 122 | O.M.Scott .....                        | 29    |
| 124 | O.M.Scott .....                        | 31    |
| 135 | Ohio Turfgrass Conference & Show ..    | 46    |
| 133 | Partac .....                           | 39    |
| 156 | Pavelec Bros. Construction .....       | 45    |
| 131 | Perfection Sprinkler .....             | 38    |
| 149 | Precision Small Engine .....           | 44    |
| 150 | Precision Small Engine .....           | 44    |
| 142 | Precision Tool Prod. Co. ....          | 43    |
| 152 | Quail Valley Turf Farm .....           | 44    |
| 127 | Rocky Mt. Turf Conference/Show ....    | 36    |
| 130 | Sherman Utility Structures .....       | 38    |
| 116 | Southern Corp. Promo. ....             | 19    |
| 112 | Standard Golf .....                    | 16    |
| 140 | Steadfast Bridge Co. ....              | 43    |
| 121 | Syncroflo .....                        | 28    |
| 120 | Toro Comm'l. Prod. Div. ....           | 26-27 |
| 109 | Toro Comm'l. Prod. Div. ....           | 14    |
| 119 | Toro-Irrigation Div. ....              | 23    |
| 143 | Trims International Software .....     | 43    |
| 102 | Turflite, Inc. ....                    | 3     |
| 159 | Unit Structures .....                  | 45    |
| 129 | United Soil Blenders .....             | 38    |
| 110 | Verti-Drain/Emrex .....                | 15    |
| 139 | W.A.Cleary Chemical * .....            | 12    |
| 123 | Watertronics .....                     | 30    |
| 146 | Yard Edge .....                        | 43    |
| 147 | York Bridge Concepts .....             | 44    |

\*Appears in regional editions.

**EXCEL**  
BRIDGE  
MANUFACTURING CO.

Golf Course Bridges are our specialty! We fabricate easy-to-install, pre-engineered spans and deliver them anywhere in the USA. Call today for a free consultation.

Carlton Oaks Country Club, Santee, CA 10' wide x 60' long, 10,000 lb. capacity

Our classic design, with a look that stands the test of time.

**800/548-0054** (Outside CA)  
12001 SHOEMAKER AVENUE, SANTE FE SPRINGS, CA 90670  
310/944-0701 • FAX 310/944-4025

CIRCLE #154

**Furness Golf Construction, Inc.**  
TIM FURNESS, PRESIDENT

Turn-Key Golf Course Construction  
Statewide • Nationwide • Worldwide

QUALITY IS OUR MAIN CONCERN

**(616) 547-6133**  
1101 Bridge Street, Charlevoix, Michigan 49720

CIRCLE #157

**Quality with a Twist**

A twist of our easy off lid gives you quick access to Pinhigh's quality reel sharpening compound.

**pinhigh**  
reel sharpening compound

Call 1 (800) 422-4748

CIRCLE #155

Exceptional Software...

**SCMS** Superintendents Compliance / Management System

"The Choice of Today's Grounds Managers"

From Equipment Tracking and Employee Training...  
To Compliance Reports and Chemical Records

Free Demonstration Diskettes  
Call Toll Free (800) 472 8882  
Environmental Compliance Systems, Incorporated  
21 North Avenue Lake Forest IL 60045

CIRCLE #158

**PAVELEC BROTHERS GOLF COURSE CONSTRUCTION CO., INC.**

✓ New Construction  
✓ Renovation  
✓ Field Drainage Systems

**TONY PAVELEC**  
(201) 667-1643  
**EMIL PAVELEC**  
(201) 939-6182

98 Evergreen Ave.  
Nutley, NJ 07110

CIRCLE #156

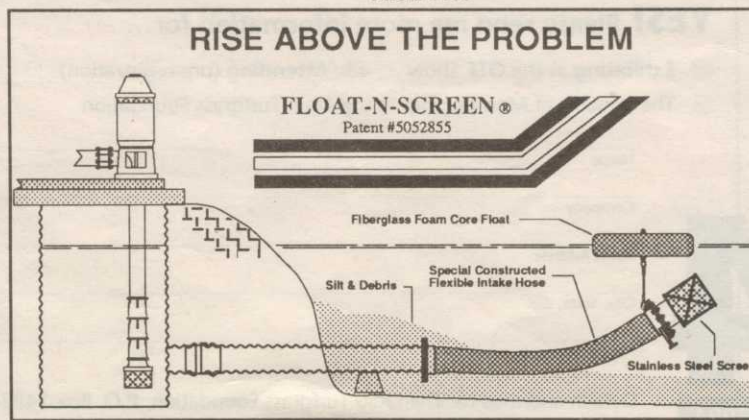
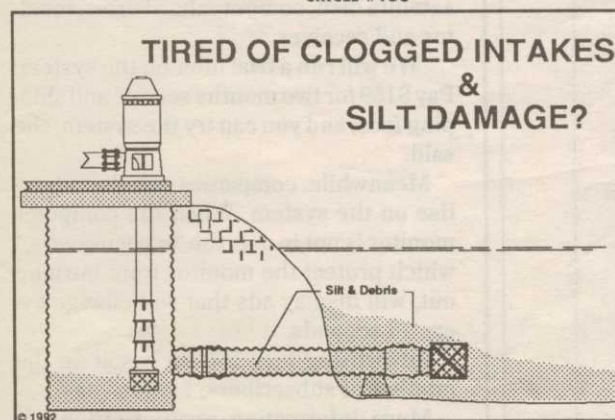
**Laminated Wood Pedestrian & Vehicular BRIDGES & SHELTERS**

Order Direct From The Leading Manufacturer in U.S.

- Complete Prefabricated Packages
- Direct Distribution Throughout the U.S.
- Ready for Fast Erection
- Custom Design & Engineering

**UNIT STRUCTURES** CALL 1-800-777-UNIT  
SPECIALTY PRODUCTS GROUP, INC. Morrisville, NC 27560  
Tel. 919/467-6151 FAX 919/469-2536

CIRCLE #159



**Float-N-Products™: Float-N-Screen®, Float-N-Foot Valve®, Float-N-Pump™, Skid-N-Pump™**  
By Greenscape Pump Services, Inc., 556 Coppell Road, Coppell Texas 75019 Ph. # (214) 393-0346

Visit Us At Golf Course Expo - Booth 139

CIRCLE #160