

Steam that mower clean

Sioux Steam Cleaner has introduced a combination steam cleaner and hot-pressure washer for cleaning and maintaining golf course and turf equipment. The Sioux Model 160-C is designed to combine steam cleaning (up to 200 degrees), hot-pressure washing and cold-pressure washing in one unit.

While able to remove mud, dried-on dirt and grease from vehicles and grounds equipment, the Model 160-C will also sterilize mower parts, halting spread for weed seeds, spores and fungus to other lawn areas. It can also de-ice frozen valves and machinery during the winter.

For more information, contact Sioux Steam Cleaner at One Sioux Plaza, Beresford, S.D. 57004; or call 605-763-2776.

CIRCLE #301

Landscape software

LANDCADD International has introduced Site Designer, a new stand-alone computer-aided drafting (CAD) software program featuring site-planning and landscape tools, irrigation and estimating capabilities, and basic cogo functions. It's designed to address the land planning needs of contractors, design-build firms and smaller landscape and architecture offices.

Site plan tools include dimensioning, topography and lot layout. Growth simulation is provided along with access to an external plant database with 150 plants. Irrigation functions include automatic- and manual-head location and pipe labeling and sizing.

For more information, contact LANDCADD at 7388 S. Revere Parkway, Building 900, Englewood, Colo., 80112-3942; or call 303-799-3600.

CIRCLE #302

Markers that bounce back

The new FlexStake FG400 series of hazard and yardage markers retains all the mow-over capability of the SF200 markers, plus they float — to discourage vandals who have made a habit of throwing markers in water hazards.

Using a patented Miles utility profile, the FG400 features a two-chamber, UV-protected, color-impregnated, polycarbonate extrusion. The markers are made of 100 percent plastic, with no steel springs or metal spikes that can harm a person or reel mower.

For more information, contact FlexStake Inc. at 2348 Bruner Lane SE, Fort Myers, Fla., 33912.

CIRCLE #303

TriKote, new & improved

Pursell Industries has announced an advancement in its sulfur-coated urea (SCU) and other sulfur-coated fertilizer (SCG) coating technology.

TriKote is a triple coating process designed to safeguard against excessive sulfur coating cracking often caused during fertilizer handling. With fewer broken coatings, TriKote is designed to increase the amount of fertilizer retained in the slow-release form. TriKote calls first for a thin layer of sulfur to be coated on the fertilizer granule, followed by application of two co-reactive monomers. The liquid monomers are sprayed on separately but polymerize together, forming a protective polymer sealant. For more information, contact Pursell Industries at ; or call .

CIRCLE #304

Golf Course Marketplace

To reserve space in this section, call Mary Anderson at 813-898-7077



Nationwide delivery • Install in less than two hours

Golf Course Bridges!

1-800-328-2047

Thousands in use. Built to last.

CONTINENTAL BRIDGE

Route 5, Box 178, Alexandria, MN 56308 • (612) 852-7500

Sponsor Member

NGF NATIONAL GOLF FOUNDATION

CIRCLE #170

TerraBond

GEOTEXTILES FOR SOIL SEPARATION AND FILTRATION



Economical soil filtration and separation for all landscaping and turf applications. Strong, durable, puncture resistant, pliable and permeable, easy to install. Proven performance nationwide.

CONTECH Geosynthetic Products for the Turf Industry

For free information, call toll-free: 1-800-338-1122. (In Ohio, 1-800-752-8899).

CIRCLE #171

Keep Your Divot Seed Mixture Where It Is Used ...



... in Divot Seed & Soil tee buckets next to the tee markers. Available in Cedar or Redwood slats and with companion Trash'M debris buckets.



Ask Your Golf Course Distributor for INNOVATIVE MAINTENANCE PRODUCTS

From Master of the Links

P.O. Box 283, Lockport, IL 60441-0283
(815) 723-4444 • Fax (815) 723-4485

CIRCLE #172



Qquest

Golf Course Maintenance Software

Only \$595^{00*}

*Limited offer

Preventive Maintenance • Work Orders • Repair Histories
Parts Inventories • Budget Analysis • Labor Management

Chemical Tracking • MSDS Informational Database
Expense Budget Tracking • Weather Monitoring & Forecasts
and much, much more!

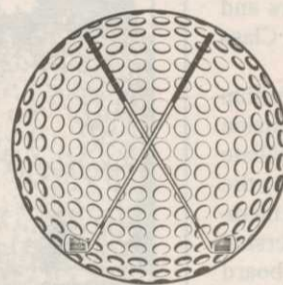
Call for a FREE Demo Disk!

Qquest Software Systems
1-800-733-8839

CIRCLE #174

Formost Construction Co.

Serving the nation for over 30 years.



IRRIGATION SPECIALISTS
"Doing One Thing Well"

P.O. BOX 559
TEMECULA, CALIFORNIA 92593

(909) 698-7270

FAX (909) 698-6170

STATE LIC. #267960

CIRCLE #173

Exceptional Software...

SCMS

Superintendents Compliance / Management System

"The Choice of Today's Grounds Managers"

From Equipment Tracking and Employee Training...
To Compliance Reports and Chemical Records

Free Demonstration Diskettes

Call Toll Free (800) 472 8882

Environmental Compliance Systems, Incorporated
21 North Avenue Lake Forest IL 60045

CIRCLE #175

LIST RENTAL

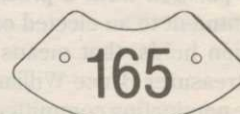
GOLF COURSE NEWS

...now offers you the opportunity to reach the decision makers at thousands of golf facilities with an exclusive mailing list.

Call Mary Anderson for details.

(813) 898-7077

ENGRAVED YARDAGE LABELS



• Bright colors • Fasteners included • Orders quickly shipped UPS **Free Samples!**

NEW ITEM... "THE SOLUTION"

For Areas Without Sprinklers. Put Your Message Plus Yardage Anywhere.



THE YARD EDGE GOLF CO.
1-800-284-YARD (9273)

P.O. Box 13159
Wichita, KS 67213

CIRCLE #176

GCSAA meeting, vote

Continued from page 29

"The meeting and conference went very well," Baidy said. "The membership gave us a sense of the direction they want us to take them with the bylaw vote. And I'm very pleased with the makeup of the board."

Baidy said he needed more time to discuss the defeated membership amendments with members and delegates before commenting on them.

One amendment would have added six *new* membership categories for other golf course maintenance and management personnel currently assigned to Affiliate or Associate classifications. The second would have established *separate* membership classifications for club officials and golf association staff members, also currently assigned Affiliate or Associate status.

The other bylaw amendments receiving favorable nods call for:

- Preserving the membership's authority to set dues for Classes AA, A, B and C, but through regular ballot procedures instead of voice vote. The board will set dues for other classifications.

- Maintaining the current requirement for a two-thirds majority vote to alter qualifications and levels of privilege for membership classes AA, A, B and C, while giving the board that power for other classes.

- Simplifying Class B and C qualifications by making all superintendents with less than three years' experience Class B members and all assistant superintendents Class C.

- Creating a new membership class for education and extension officers who are currently Affiliate or Associate members; allowing the board to lower dues for retired members; making honorary membership permanent; and requiring the board to set rules regarding Affiliate member privileges.

- Requiring two-thirds of the board to approve any mortgage or loan that incurs financial obligations for future boards.

- Requiring an official post-election report of voting records by chapter name, total of individual votes and total of proxy votes.

- Making submission of false information on membership applications or dues statements an offense punishable by discipline or expulsion.

- Updating the organization's mission to reflect the importance of environmental awareness in golf course management.

- Changing the secretary/treasurer position from a presidential appointment to an elected office. If tradition holds, that means secretary/treasurer Bruce Williams will be the nominating committee's sole choice for vice president in 1995 and GCSAA's likely president in 1996.

- Clarifying the secretary/treasurer's official duties.

- Naming the president, vice president and secretary/treasurer as trustees of the Benevolence Fund.

- Retitling the association's chief executive employee *CEO* instead of *executive director*.

Golf Course Marketplace

To reserve space in this section, call Mary Anderson at 813-898-7077



NEW

Flymo

- New GCT 20
- Patented & Proven Safety Cutting System
- New JLO Engine with One Year Warranty

PRECISION SMALL ENGINE CO.

FOR MORE DETAILS CALL
1-800-345-1960 or 305-974-1960

CIRCLE #178

Keep That Edge



Contact Your Local Distributor or Call Us
Toll Free 1 (800) 422-4748

CIRCLE #179



QUAIL VALLEY FARM, INC.

"Growers of Quality Turf Grasses"

- Meyer Z-52 Zoysia
- El Toro Zoysia
- Tall Fescue
- Sprigs
- Tifway II
- Tifdwarf
- Big Rolls

• Midlawn
(the new transition zone bermuda grass!)

(800) 666-0007

P.O. Box 5508
Little Rock, AR 72215
(501) 280-0763

CIRCLE #180

GOLF COURSE DESIGN OF THE FUTURE!

Great return on your investment!
35+ or 75+ acres—18 holes—family center

Jack Fleck Design

U.S. Open Champion: 55 years a pro

Contact **Jack Fleck & Associates**

Rt. 1, Box 14-O Magazine, AR 72943
(501) 969-2203 Fax: (501) 969-2797

CIRCLE #181

YORK BRIDGE CONCEPTS
A Division of Pelican Marine Enterprises, Inc.



- On-Site Construction
- Consulting and Design Capabilities
- Certified Engineered Drawings Available

1426 W. Busch Blvd. • Tampa, FL 33612 • (800) 226-4178

CIRCLE #182

ACCU-GAGE™

NEW!

LIFETIME WARRANTY
ON BARS WITH **DURA-COAT™**

ACCU-GAGE is a precision tool for making highly accurate height-of-cut measurements on greens-mowers or other precision mowers. AVAILABLE IN 15", 18", and 24" bars.

Our **LIGHTWEIGHT** and **RIGID** aluminum bars are now treated with **DURA-COAT**. **DURA-COAT** wears better than tool steel and enables us to offer this unique **LIFETIME WARRANTY**. In addition, all replacement bars are treated with **DURA-COAT**, and have a **LIFETIME WARRANTY**.

To order call 1-800-253-2112 or fax 1-313-429-3985.

PRECISION TOOL PRODUCTS CO.
7836 Bethel Church Rd. • Saline, MI 48176

CIRCLE #183

TRIMS gives you more for your money!

TRIMS gives you more benefits and offers you more features than all other grounds management software packages combined! Don't settle for an imitation.

You've always wanted **TRIMS!**
Why Wait?

Call for your free Demo Disk:

TRIMS Software International

6220 East Thomas Road, Suite 303
Scottsdale, AZ 85251

(800) 608-7467

Indicate 5 1/4" or 3 1/4" diskette

CIRCLE #184

NEW Introducing **GROOMER-GAGE**

GROOMER GAGE . . . is a precision measuring instrument for accurately setting the desired grooming depth on groomer or verticutter units.

For more information on this and other precision tools call Toll Free:
1-800-253-2112 / In Michigan call Collect: 313-429-9571

PRECISION TOOL PRODUCTS CO. 7836 Bethel Church Rd. • Saline, MI 48176

CIRCLE #185

Golf Course Marketplace

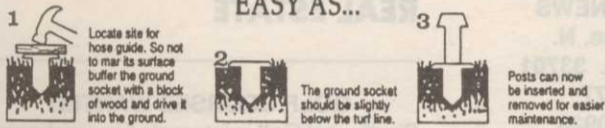
To reserve space in this section, call Mary Anderson at 813-898-7077

MARKERS, INC.

33597 PIN OAK PARKWAY • AVON LAKE, 44012

Golf Course Marking System

EASY AS...



Permanent System with Flexible Application

Call Today! 1-800-969-5920

CIRCLE #186

DON'T READ THIS AD!

Unless you want to improve the financial management of your golf course.

IBS provides turn-key computing solutions to meet today's golf course management needs. Whether its point of sale, membership billing, food & beverage operations, or a complete accounting system, IBS is the one company to call!



Integrated Business Systems, Inc.
1401 Gaskins Road • Richmond VA 23233
(800) 860-6227 or (804) 741-6326

CIRCLE #187



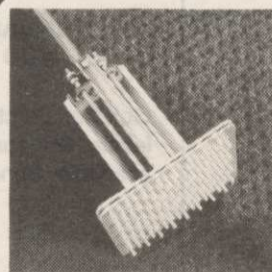
PAVELEC BROTHERS GOLF COURSE CONSTRUCTION CO., INC.

- ✓ New Construction
- ✓ Renovation
- ✓ Field Drainage Systems

TONY PAVELEC
(201) 667-1643
EMIL PAVELEC
(201) 939-6182

98 Evergreen Ave.
Nutley, NJ 07110

CIRCLE #188



Miltona

TURF PRODUCTS

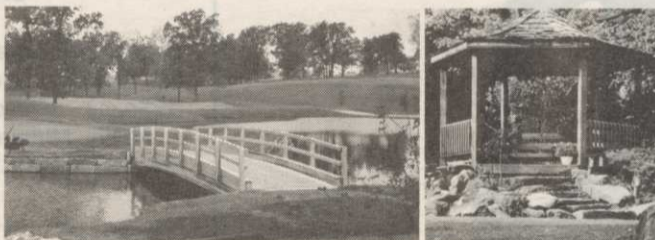
Over-Seed Winter Kill

With this tool you can punch 700 seed holes per minute on one inch spacing. It attaches to a cup cutter handle.

Order Yours Today
Call 800-456-4351

P.O. Box 164 • Miltona, MN 56354

CIRCLE #189



Laminated Wood Pedestrian & Vehicular BRIDGES & SHELTERS

Order Direct From The Leading Manufacturer in U.S.

- Complete Prefabricated Packages
- Direct Distribution Throughout the U.S.
- Ready for Fast Erection
- Custom Design & Engineering



CALL
1-800-777-UNIT

Morrisville, NC 27560
Tel. 919/467-6151
FAX 919/469-2536

CIRCLE #190



Furness Golf Construction, Inc.

TIM FURNESS, PRESIDENT

Turn-Key Golf Course Construction
Statewide • Nationwide • Worldwide

QUALITY IS OUR MAIN CONCERN

(616) 547-6133

1101 Bridge Street, Charlevoix, Michigan 49720

CIRCLE #191

Clemson course/lab

Continued from page 22

plant pathology.

Dr. Ron Kendall, who is in charge of a study at Kiawah Island's Ocean Course, said, "This kind of integrated thinking will be very important. This will ... continue to build on such efforts as Kiawah and other studies as to how to lay out a golf course and not harm the ground water, surface water and wildlife habitat.

"The course will help us understand pesticide and fertilizer use and timing of applications; identify appropriate turfgrass, shrubbery and habitat that is least dependent on pesticides; and then the best strategies to incorporate environmental concerns."

Kendall has expressed excitement at the opportunity to "look at how courses change over time, model the influence of pesticides and their movement and fate, and potential exposure and impact on the environment."

Coordinated by developer Keenan Corp. of Columbia, S.C., initial construction includes the golf course and conference center. A planned hotel has been deferred for a time.

The course is being designed by D.J. DeVictor of Roswell, Ga., built by Landscapes Unlimited of Lincoln, Neb., and managed by Riverside Golf.

While scientists wait with great expectations for the course to open and tests to begin, officials from the federal Architecture and Transportation Barriers Compliance Board have been involved for months. Only one other 18-hole course in the country — Fox Hollow in Littleton, Colo. — has been specifically designed to be accessible to physically handicapped.

Yet DeVictor said although he was skeptical at first, making the track accessible has had very little effect on his design.

"Everybody put us at ease almost immediately," he said. "The ADA and others don't want to change the character or strategy of the golf course. There is very little impact from adapting ADA regulations.

Tee boxes, greens and bunkers in particular must be accessible, and the cart path must provide access to the fairway every 75 yards, he said.

Basically, these concerns are addressed by building the paths all the way to the tee boxes and without steep inclines.

"The bottom line," DeVictor said, "is that the contractor has to implement the strategies. I call them constraints, but they're really not affecting anything. You have to wind the cart path through the course so that it's not visible but gives you access. This makes us look at it with more detail, but most of it is field directions.

"We think people will have to be told it's built as handicapped accessible."

The fairways should be seeded in mid-summer and the greens with bentgrass in September, and the course could open in November, DeVictor said.

"We're looking forward to doing national golf tournaments for handicapped, and other events at that level," Martin said.

The 52,400-square-foot conference center should open in June 1995, he said, adding that he anticipates the facility may become a model for other research-oriented universities. However, "We are so heavily involved in getting the golf course up and running, we haven't done a lot of that kind of work."

The \$1 million anonymous gift was two-thirds what was needed to begin construction on the \$3.7 million course. It set in motion plans to borrow another \$2.2 million, which will be backed by the Clemson University Foundation, a private non-profit fundraising group. That money will be repaid from proceeds from the facility, Martin said.

Inside Info

Get the jump on your competition by subscribing to the *Golf Course News Development Letter*

This twice-monthly newsletter . . .

- tracks golf course projects under consideration across the nation
- is packed with news items detailing where and when projects will be undertaken, and by whom
- is just \$195 for a year's subscription.

For more information, contact Editor Peter Blais at 207-846-0600.

March

4 — *Athletic Turf Management Seminar in Gainesville, Fla.* Contact 414-733-2301.

5-8 — *45th Canadian Turfgrass Conference & Trade Show in Calgary.* Contact 905-602-8873.

7-8 — *Athletic Turf Management Seminar in Lincoln, Neb.* Contact 414-733-2301.

8 — *USGA Green Section Educational Conference with staff agronomists and golfer Jerry Pate in Palm Beach Gardens, Fla.* Contact 407-546-2620.

10 — *USGA Green Section Educational Conference with staff agronomists and golfer Jerry Pate in Orlando, Fla.* Contact 407-546-2620.

11 — *GCSAA seminar on Maximizing Job Satisfaction in Phoenix*

11 — *Fifth Annual Turf Management Seminar in El Cajon, Calif.* Contact 619-670-1980, ext. 262.

14-16 — *Maine Turfgrass Show and Conference in Rockport.* Contact 207-781-7878.

17 — *GCSAA seminar on Implementing Strategies and Plans for Turfgrass Environmental Systems in Minneapolis.**

17-18 — *USLI seminar on "Profitability in a Changing Environment" in Chicago.* Contact 800-735-4647.

22-23 — *GCSAA seminar on Golf Course Design Principles in Palm Springs, Calif.**

22-23 — *Turfgrass, Landscape and Sports Turf Institute in Pomona, Calif.* Contact

619-723-0947.

24-27 — *Pacific Rim Golf Course Conference and Show/Golf Asia in Singapore.*

April

17-19 — *NGF Alternative Golf Facilities Conference in Newport Beach, Calif.* Contact 407-744-6006.

July

4-8 — *World Scientific Congress of Golf in St. Andrews, Scotland. Contact World Scientific Congress of Golf in the UK at 0334-75560.*

31-Aug. 2 — *Georgia GCSA Summer Conference at Calaway Gardens Resort. Contact Karen White at 706-769-4076.*

October

29-Nov. 2 — *Georgia GCSA Annual Meeting in Savannah. Contact Karen White at 706-769-4076.*

November

8-9 — *National Golf Foundation Golf Summit '94 in Phoenix.* Contact 407-744-6006.

10-12 — *Golf Course Expo in Orlando, Fla.* Contact the Golf Course News Conference Group at 207-846-0600.

13-16 — *28th Annual Carolinas GCSA Conference and Show in Myrtle Beach, S.C.* Contact 800-476-GCSA.

* For more information contact the GCSAA Education Office at 800-472-7878 or 913-841-2240.



IT DOES A NUMBER ON SUMMER PATCH. NOT ON YOUR WATER BILL.

Unlike some fungicides, Banner® needs no watering-in to be effective. So use it, and you won't get soaked.

©1994 Ciba-Geigy Corp., Turf and Ornamental Products. Banner is a registered trademark of Ciba-Geigy Corp. Always read and follow label directions.

Golf Co

To reserve space

ADVERTISING INFO.

1994 RATES

	2X	6X	12X
Per col. inch:	\$75.00	\$65.00	\$50.00
Add-on per 1/4":	\$18.75	\$16.25	\$12.500
Logo incl. in ad:	\$40.00	\$40.00	\$40.00

- Rates are per insertion.
- Minimum 2-time insertion.
- Prepayment is required.

Send prepayment & ad copy to:
GOLF COURSE NEWS
 227 Second Ave. N.
 St. Petersburg, FL 33701
 (813) 898-7077
 Fax (813) 825-0923

EMPLOYMENT OPPORTUNITIES

QUALITY OVERSEAS AND DOMESTIC JOBS

Golf Construction personnel needed at all levels. Temporary and long term positions available. Send resume to:

Fax: (714) 524-7255

GreensWay Golf Company
 101 S. Kraemer Boulevard
 Placentia, California 92670

SHAPER

Shaper with experience in new construction and renovation needed. Progressive company based in Midwest. Send resume to: **Midwest Golf Development, Inc., 18250 Beck Rd.; Marengo, IL 60152.**

JOB SEEKERS: The freshest source of green industry job openings in America; 3 month subscription (6 issues) : \$19.95. **EMPLOYERS:** For fast, inexpensive vacancy listings. MC/VISA. Call: 1-800-428-2474; Fax: 1-800-884-5198. **Ferrell's JOBS IN HORTICULTURE, 154 E. Chapel Ave.; Carlisle, PA. 17013-3435**

SEEKING EMPLOYMENT

PROJECT MANAGER/SUPERVISOR

Seeks position with contractors, owners and developers. Proven track record with international experience. B.S. in Agronomy; minor in Irrigation.

(813) 924-8963

NO JOB TOO BIG OR TOO HARD!

I specialize in taking problem jobs, companies, landscape and/or golf projects and making them run smoothly and profitably. Experience as a golf course superintendent, landscape architect, construction manager and contractor. Willing to travel worldwide. Reply to: **Division A, Golf Course News, 227 Second Ave. N.; St. Petersburg, FL 33701.**

REAL ESTATE

GOLF COURSES WANTED

Southwest Golf is interested in purchasing or leasing golf courses.

Call Dick Campbell at
 (505) 898-0960

FOR SALE

NEW VIDEOS

"Introduction to Golf Course Maintenance" (Spanish or English). It covers green cutting, cup changing, cart maintenance & sandtrap raking. \$39.95 plus \$4.00 shipping & handling. Now being used in 34 states—and by the GCSAA Education Department.

MACH IV PRODUCTIONS
 P.O. Box 543
 Wauconda, IL 60084

** FOR SALE **

CONCRETE CART PATHPAVER

Will Do 8', 7' or 6' cart paths. Used only once. In excellent condition.

T.D.M., Inc.
 Call: (604) 689-0180 or
 Fax: (604) 689-0196

STEEL BUILDINGS

Save up to 40% on Arch Style Buildings. Factory Clearance. 25x30; 40x40; 50x100 & others. Factory Direct.

AMERICAN STEEL ARCH, INC.

1-800-942-1234

PIPE LOCATOR

Inexpensive! Locates, traces underground drain, water pipelines of clay, PVC, ABS, steel & cement. Finds sprinklers, valves & clogs. Used by over 1,000 golf courses. **Bloch & Co., Box 18058, Cleveland, OH 44118. (216) 371-0979**

Course Marketplace

For more information in this section, call Mary Anderson at 813-898-7077

WADSWORTH GOLF CONSTRUCTION COMPANY

FOR SALE: HARLEY ROCK PICKER BY GLENMAC: Model A High Lift, 1989 Models. Glenmac SN#A-9A0603 and A-9A0604. Like new! \$19,250 each unit. **HARLEY WINDROWER ROCK PICKER BY GLEMAC.** Great condition. 1989 Model, TR 12, SN#129A0404; 1989 Model, TR 38, SN# 89A02012. \$5,500 each unit. Delivery not included. Call: (815) 436-8400

RAZORBACK BUNKER EDGER

\$29.95. Long handled tool roots out encroaching grass in sand bunkers and cuts a clean edge between sand & grass. Contact **D.W. Eaton, 3501 Camelot Drive; Lexington, KY 40517-1408.** Ph#: (606) 273-4604

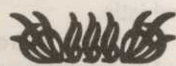
FOR LEASE OR HIRE CONCRETE CART PATHPAVER ABLE TO DO 6 OR 8 FT. CART PATHS CALL KEITH ACKLIE (817) 430-3289

POND LINERS

Buy direct from fabricator 20 & 30 mil. P.V.C. Made to order. Under 20 cents per sq. ft. Installation or supervision available. Call...

COLORADO LINING COMPANY 800-524-8672 or 303-841-2022

BUSINESS SERVICES



Mid Tenn Turf, Inc.

Golf course, athletic field renovations & new construction. Sodding, sprigging, row planting, fairway renovations. Complete turn key operations. Products include: Vamont Bermuda; Tif & Tif II Bermudas; Meyer Z-52 Zoysia; Blended Fescue.

Mid Tenn Turf, Inc. Rt. 3, Box 3199 Manchester, TN 37355 Phone (615) 728-0583

INSIDE INFO

Get the jump on your competition by subscribing to the **Golf Course News Development Letter**, which tracks golf course projects *under consideration* across the nation. This twice-monthly newsletter is packed with news items detailing where and when projects will be undertaken, and by whom. For more information, contact:

Editor Peter Blais at (207)-846-0600

Market Demand & Feasibility Studies

New Projects • Expansions Buyers • Sellers • Lenders

Texas • Arkansas • Louisiana Oklahoma • New Mexico

TALON GOLF SERVICES

1603 Lightsey • Austin Tx 78704
512/442-7105 • Fax 512/442-1812

QUALITY EMPLOYEES FOR DOMESTIC AND OVERSEAS JOBS AVAILABLE

When you require the best for all aspects of your golf course development, GreensWay fills your needs. From budgeting to construction and operations, we deliver qualified employees. With over thirty years in the golf industry, GreensWay takes the hassle out of finding personnel with specialized skills.

**Office: (714) 528-1185 ext. 45
Fax: (714) 524-7255**

**GreensWay Golf Company
101 S. Kraemer Boulevard
Placentia, CA 92670**

TRUE-SURFACE (TM) VIBRATORY GREENS ROLLER

Selected territories available to distributors or reps for patented, vibrating greens rolling system. Demonstrated marketability, national advertising program, leads furnished: Write to: **Turflite, Inc.; 327 Willowpoint Dr.; St. Charles, MO 63304. 1-800-443-8506**

BUSINESS OPPORTUNITIES

GOLF IN ANY WEATHER—ANYTIME Future Golf, Inc. has developed a golf concept patented in the U.S., Canada & Great Britain (Japan pending) in which you can play a round of golf in any weather at any time on marginal land of 7 acres. Will sell patents or form joint venture. Write to **25597 W. Drake Rd., Barrington, IL 60010. (708) 381-2427.**

Put the classifieds to use—they work! Closing date for space in the April issue is March 15th. Call our advertising office at:

(813) 898-7077
Or fax us your ad at:
(813) 825-0923
and get results today!

LASER MEASURING

LASER MEASURING and SPRINKLER YARDAGE MARKERS

We do it all. Laser measure & installation (same day) of **custom metal yardage markers** for all types of sprinkler heads. Warranty included. Also tee to green measurements, granite fairway markers. Sprinkler yardage markers may be purchased separately. Contact Nick for samples & references.

**Fairway Designs of Florida
1-800-36-TAGIT**

GOLF COURSE ACCESSORIES

CUSTOMIZED YARDAGE MARKERS

- ✓ **Highest quality bronze markers** for tees, 100, 150 & 200; & cart paths
 - ✓ **Sprinkler head yardage tags** to fit all automatic systems
 - ✓ **Yardage books** — 1 & 4 color
 - ✓ **Laser measure** per USGA standards
- For more information, references or samples, contact:

**From Tee to Green, Inc.
1707 Brandywine Trail
Ft. Wayne, IN 46845
(800) 932-5223**

SAVE 40% OR MORE!

Buy personalized flags factory direct & save 40% or more. Flagpoles, tee markers, etc. also available. Fast personalized service guaranteed. Call toll free.

1-800-476-7005



FOUR SEASONS GOLF COMPANY

**P.O. Box 78011
Greensboro, NC 27427**

GOLF COURSE NEWS LIST RENTAL

A great opportunity for target marketing important decision makers. Take advantage of our exclusive and timely mailing list as a great marketing tool.

Call Mary Anderson for details.

(813) 898-7077

ADVERTISERS' INDEX

RS#	Advertiser	Page
123	A.S.I.	26
141	Ametek	39
149	The Andersons	52
127	Aquamaster	27
102	Aquatrols	3
137	B.H.Sales	36
112	BASF	17
114	Best Sand	20
117	Brouwer Turf Equip.	21
152	C-LOC Rentention Systems	55
154	Cartrol	55
139	Cedar Chemical	37
132	Ciba-Geigy	32
143	Ciba-Geigy *	42-43
150	Ciba-Geigy	53
162	Ciba-Geigy	68
104	Ciba-Geigy	4-5
156	Club Car	57
171	Contech Construction Products	65
170	Continental Bridge	65
124	Double Springs Grass Farm	26
101	E-Z-GO	2
121	Envirogenesis	24
175	Environmental Compliance Sys.	65
144	Flowtronex/PSI	44
115	Fore Par	20
125	Formost Construction Co.	26
173	Formost Construction Co.	65
191	Furness Golf Construction	67
116	General Services Adminis.	20
147	Golf Course Expo	48
158	Hoechst-Roussel	60
187	Integrated Business Sys.	67
157	ISK Biotech	58
181	Jack Fleck Design	66
106	Jacklin Seed Co.	8-9
165	Jacobsen	72
179	Jesco Products/Pinhigh	66
105	John Deere	6-7
195-99	Kalo	35
126	Kirby Markers	26
129	Lofts, Inc.	30
186	Markers, Inc.	67
172	Master of the Links	65
131	Melex USA	31
134	Melex USA	33
148	Miles Inc.	50-51
103	Millcreek Manufacturing	3
189	Milona Turf Products	67
118	National Mower	22
119	O.M.Scott	23
161	O.M.Scott	64
110	O.M.Scott	14
164	O.M.Scott	71
130	Par Aide	31
107	Partac	11
188	Pavelec Bros. Construction	67
142	PBI/Gordon Corporation	40
178	Precision Small Engine	66
183	Precision Tool Prod. Co.	66
185	Precision Tool Prod. Co.	66
138	Pro-Seed USA	36
174	Qquest Software Systems	65
180	Quail Valley Turf Farm	66
167	Ransomes America Corp. *	42-43
151	Regal Chemical	54
128	Rhone-Poulenc	28-29
140	Rhone-Poulenc	38
146	Rohm & Haas	46-47
113	Sandoz	18-19
160	Sandoz	62-63
111	Smithco	16
159	Smithco	61
145	Southern Corp. Promotions	45
162	Stamos Tool	45
133	Standard Golf	33
163	Tee-2-Green	70
109	Toro Comm'l. Prod. Div.	12-13
135	Toro Comm'l. Prod. Div.	34
184	Trims International Software	66
155	Trojan Battery Co.	56
120	Turflite, Inc.	24
190	Unit Structures	67
153	United Soil Blenders	55
122	Valent *	25
108	Verti-Drain/Emrex	11
176	Yard Edge	65
182	York Bridge Concepts	66

* Appears in regional editions.