

Golf Course Marketplace

To reserve space in this section, call Mary Anderson, 813-898-7077

ADVERTISING INFO. REAL ESTATE

1994 RATES

	2X	6X	12X
Per col. inch:	\$75.00	\$65.00	\$50.00
Add-on per 1/4":	\$18.75	\$16.25	\$12.50
Logo incl. in ad:	\$40.00	\$40.00	\$40.00

- Rates are per insertion.
- Minimum 2-time insertion.
- Prepayment is required.

Send prepayment & ad copy to:
GOLF COURSE NEWS
 227 Second Ave. N.
 St. Petersburg, FL 33701
 (813) 898-7077
 Fax (813) 825-0923

EMPLOYMENT OPPORTUNITIES

GOLF COURSE CONSTRUCTION

Project Managers, Shapers, Lay-out Specialists needed at once. Must be willing to travel. Fax resume and date available to:

(616) 547-7009.

SHAPERS AND SUPERVISORS!

Needed with experience for overseas and domestic jobs. Send resume to:

Intergolf
 P.O. Box 209
 Dobbs Ferry
 New York, NY 10522-0209

Fax: 914-693-9506

NEEDED: JOB SUPERINTENDENTS AND FINISH SHAPERS

For golf course contractor in the midwest. Send resume to: **Mid-America Golf; 1611 SE. 7th Terrace; Lee's Summit, MO 64063.**

Fax: (816) 524-0150

GOLF COURSES WANTED

Southwest Golf is interested in purchasing or leasing golf courses.

Call **Dick Campbell** at
 (505) 898-0960

TEXAS GOLF COURSES

9 & 18 holes—Statewide. Some with extra land, development lots. Descriptive list available.

TEXAS GOLF PROPERTIES
 1603 Lightsey—Austin, TX 78704
 512/442-7105
 Fax 512/442-1812

FOR SALE

PIPE LOCATOR

Inexpensive! Locates, traces underground drain, water pipelines of clay, PVC, ABS, steel & cement. Finds sprinklers, valves & clogs. Used by over 1,000 golf courses.

Bloch & Co., Box 18058, Cleveland, OH 44118. (216) 371-0979.

POND LINERS

Buy direct from fabricator 20 & 30 mil. P.V.C. Made to order. Under 20 cents per sq. ft. Installation or supervision available. Call...

COLORADO LINING COMPANY
 800-524-8672 or 303-841-2022

ARCH STYLE STEEL BUILDINGS

For Cart & Equipment storage. Factory Direct from \$1.86 sq. ft. Save money on buildings in stock. 25x32; 30x42; 40x76; 51x96. Easy to erect. **ARCHWAY STEEL BUILDINGS.**

1-800-344-2724

FOR SALE

Jacobsen 590 Aerator 6ft wide. Three quarter inch coring tines; transport wheels & hydraulic cylinder. Excellent shape. **Like new. Price: \$2,500.00. Call:**

(719)683-2599

FOR SALE: DOUGLAS ROLLERS

21/2 inch grooved front and rear; totally rebuildable; 2 seasons old. Rebuilt once. Fit LF 100 or Lesco 500 reels. \$55.00 each includes shipping. Call **Terry Buchen** at: (614) 548-6644.



Mid Tenn Turf, Inc.

Services -
 *Row Plant Sprigging *Broadcast Sprigging
 *Sod Installation *Hydro Seeding *Laser Grading
 *Complete Athletic Field Construction & Renovation

Sod Varieties -
 Available in 16" x 24" Slab or 42" x 120" Big Roll
 *Blended Fescue *Vamont Bermuda
 *419 Bermuda *Quickstand Bermuda
 *Tifway II Bermuda *Myer Zoysia
 Sprigs available in all Bermudas and Zoysia

Manchester (615) 728-0583
Nashville (615) 254-4728
Fax (615) 728-0168 Toll Free 1-800-782-4083
4698 New Bushy Branch Rd.
Manchester, Tennessee 37355

BUSINESS SERVICES

ATTENTION: GOLF COURSE OWNERS, OPERATORS, DEVELOPERS AND ARCHITECTS

Now you have the best available people at affordable prices. We will supply you the people for all aspects of golf course construction, turf grow-in, on site maintenance training with certified golf course superintendents anywhere in the world. We specialize in long and short term placement with full insurance coverage worldwide. Call or fax your project needs to:

Office: (714) 528-1185 ext. 27 or 45
Fax: (714) 524-7255
(714) 996-9387

LASER MEASURING

LASER MEASURING and SPRINKLER YARDAGE MARKERS

We do it all. Laser measure & installation (same day) of **custom metal yardage markers** for all types of sprinkler heads. Warranty included. Also tee to green measurements, granite fairway markers. Sprinkler yardage markers may be purchased separately. Contact Nick for samples & references. **Fairway Yardage Designs, 800-36-TAGIT. (368-2448)**

GOLF COURSE ACCESSORIES

CUSTOMIZED YARDAGE MARKERS

- ✓ **Highest quality bronze markers** for tees, 100, 150 & 200; & cart paths
 - ✓ **Sprinkler head yardage tags** to fit all automatic systems
 - ✓ **Yardage books** — 1 & 4 color
 - ✓ **Laser measure** per USGA standards
- For more information, references or samples, contact:

From Tee to Green, Inc.
 1707 Brandywine Trail
 Ft. Wayne, IN 46845
 (800) 932-5223

SAVE 40% OR MORE!

Buy personalized flags factory direct & save 40% or more. Flagpoles, tee markers, etc. also available. Fast personalized service guaranteed. Call toll free.
1-800-476-7005



FOUR SEASONS GOLF COMPANY
 P.O. Box 78011
 Greensboro, NC 27427

CLASSIFIED ORDER FORM

HOW TO ORDER A CLASSIFIED AD

RATES: \$75.00 per column inch (25-35 words, including a bold headline). Each additional 1/4 inch is \$18.75. If ordering a logo, please indicate and include an extra \$40.00; for a blind box, please indicate and include an extra \$15.00. All line ads must be prepaid. All rates are per insertion. For more information, call Mary Anderson at (813) 898-7077. To place your classified ad, mail this form with enclosed payment to:

Golf Course News
 227 Second Ave. N.
 St. Petersburg, FL 33701
 or fax to: (813) 825-0923

Your Name _____
 Company Name _____
 Address _____
 City _____ State _____
 Zip _____ Daytime Phone _____

- Payment enclosed, or
 Charge to my credit card
 Visa/MC _____ Exp. date _____
 Am Ex _____ Exp. date _____
 Signature _____

Please attach separate sheet of paper if extra space is needed.

- Logo
 Blind Box

June

8 — Lofts Field Day in Wilmington, Ohio. Contact David Goodwin at 800-328-1127.

10 — Lofts Field Day in Beltsville, Md. Contact John Patton at 800-732-3322.

July

4-8 — World Scientific Congress of Golf in St. Andrews, Scotland. Contact World Scientific Congress of Golf in the UK at 0334-75560.

24-26 — Texas Turfgrass Seminar in Arlington. Contact 806-354-8447.

31-Aug. 2 — Georgia GCSA Summer Conference at Callaway Gardens Resort. Contact Karen White at 706-769-4076.

August

16 — Wisconsin Turfgrass Field Day in Madison. Contact Dr. Frank Rossi at 608-262-1490.

24 — Turf Talk '94 in Chandler, Ariz. Contact Garden West at 602-233-2966.

September

20-22 — Virginia Tech Turf and Landscape Field Days in Blacksburg, Va. Contact J.R. Hall III at 703-231-9736

October

29-Nov. 2 — Georgia GCSA Annual Meeting in Savannah. Contact Karen White at 706-769-4076.

November

6-9 — 15th Annual International Irrigation Exposition and Technical Conference in Atlanta. Contact 703-573-3551.

11-12 — Golf Course Expo in Orlando, Fla. Industry trade show and conference for superintendents, managers, owners and developers of public-access golf courses. Contact the Golf Course News Conference Group at 207-846-0600.

18-20 — National Golf Foundation Golf Summit '94 in Phoenix. Contact 407-744-6006.

Leslie commentary

Continued from page 10

times have less impact on our society than the stories behind the less-weighty headlines. Along this vein, any coverage of the Black Pages was buried in the back of your daily newspaper a month or so ago.

If the May issue's revelation on Potty Parity isn't enough to cause a hot breeze of premonition, the Black Pages may lurk around the corner in your future.

First remember, it was not long ago that the Shoal Creek mud was slung. The private country club in Birmingham, Ala., had no African-American members. African-Americans, whites — the whole world, for that matter — damned the club from here to Sunday for its discrimination.

Today, those same African-Americans are stepping into the old shoes of Those Dreaded Discriminators. The Black Pages is their answer to the Yellow Pages of your friendly telephone company. While the Yellow Pages list all businesses, the Black Pages list only those owned by African-Americans.

Is this discrimination against white, yellow and red people? What if you are a (ugh-h) "mixed breed"?

Would Dr. Martin Luther King have joined Shoal Creek? I don't know. But I feel he would be very upset by the Black Pages. He wanted all people to transcend physical superficialities. This sort of thing only puts up more walls of division.

And if we don't need it in golf, we certainly don't need it in society in general. Indeed, the American Declaration of Inde-

Continued on next page

Golf Course Marketplace

To reserve space in this section, call Mary Anderson, 813-898-7077



Nationwide delivery • Install in less than two hours

Golf Course Bridges!

1-800-328-2047

Thousands in use. Built to last. Sponsor Member



Route 5, Box 178, Alexandria, MN 56308 • (612) 852-7500



CIRCLE #150

ENGRAVED YARDAGE LABELS

• Bright colors • Fasteners included • Orders quickly shipped UPS **Free Samples!**

NEW ITEM... "THE SOLUTION"

For Areas Without Sprinklers. Put Your Message Plus Yardage Anywhere.



THE YARD EDGE GOLF CO. P.O. Box 13159
1-800-284-YARD (9273) Wichita, KS 67213

CIRCLE #152



PAVELEC BROTHERS GOLF COURSE CONSTRUCTION CO., INC.

✓ New Construction
✓ Renovation
✓ Field Drainage Systems

TONY PAVELEC (201) 667-1643
EMIL PAVELEC (201) 939-6182

98 Evergreen Ave. Nutley, NJ 07110

CIRCLE #154


TRIMS gives you more for your money!

TRIMS gives you more benefits and offers you more features than all other grounds management software packages combined! Don't settle for an imitation.

You've always wanted TRIMS! Why Wait? Call for your free Demo Disk:

TRIMS Software International
6220 East Thomas Road, Suite 303
Scottsdale, AZ 85251
(800) 608-7467

Indicate 5¼" or 3½" diskette



CIRCLE #156

Inside Info

Get the jump on your competition by subscribing to the **Golf Course News Development Letter**

This twice-monthly newsletter...

- tracks golf course projects under consideration across the nation
- is packed with news items detailing where and when projects will be undertaken, and by whom
- is just \$195 for a year's subscription

For more information contact Editor Peter Blais at 207/846-0600



Furness Golf Construction, Inc.

TIM FURNESS, PRESIDENT

Turn-Key Golf Course Construction
Statewide • Nationwide • Worldwide

QUALITY IS OUR MAIN CONCERN

(616) 547-6133

1101 Bridge Street, Charlevoix, Michigan 49720

CIRCLE #151



QUAIL VALLEY FARM, INC.

"Growers of Quality Turf Grasses"

- Meyer Z-52 Zoysia
- El Toro Zoysia
- Tall Fescue
- Sprigs
- Tifway II
- Tifdwarf
- Big Rolls
- Midlawn (the new transition zone bermuda grass!)

(800) 666-0007

P.O. Box 5508
Little Rock, AR 72215
(501) 280-0763



CIRCLE #153

ACCU-GAGE™

NEW! LIFETIME WARRANTY ON BARS WITH DURA-COAT™



ACCU-GAGE is a precision tool for making highly accurate height-of-cut measurements on greens mowers or other precision mowers.

AVAILABLE IN 15", 18", and 24" bars.

Our LIGHTWEIGHT and RIGID aluminum bars are now treated with DURA-COAT. DURA-COAT wears better than tool steel and enables us to offer this unique LIFETIME WARRANTY.

To order call 1-800-253-2112 or fax 1-313-429-3985.

PRECISION TOOL PRODUCTS CO.
7836 Bethel Church Rd. • Saline, MI 48176

CIRCLE #155

Keep Your Divot Seed Mixture Where It Is Used ...

... in Divot Seed & Soil tee buckets next to the tee markers. Available in Cedar or Redwood slats and with companion Trash'M debris buckets.

Ask Your Golf Course Distributor for INNOVATIVE MAINTENANCE PRODUCTS

From *Master of the Links*

P.O. Box 283, Lockport, IL 60441-0283
(815) 723-4444 • Fax (815) 723-4485






CIRCLE #157

YORK BRIDGE CONCEPTS

A Division of Pelican Marine Enterprises, Inc.



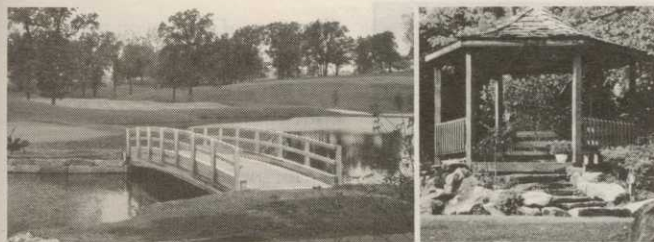
- On-Site Construction
- Consulting and Design Capabilities
- Certified Engineered Drawings Available

1426 W. Busch Blvd. • Tampa, FL 33612 • (800) 226-4178

CIRCLE #158

Golf Course Marketplace

To reserve space in this section, call Mary Anderson, 813-898-7077



Laminated Wood Pedestrian & Vehicular BRIDGES & SHELTERS

Order Direct From The Leading Manufacturer in U.S.

- Complete Prefabricated Packages
- Ready for Fast Erection
- Direct Distribution Throughout the U.S.
- Custom Design & Engineering



CALL 1-800-777-UNIT

Morrisville, NC 27560
Tel. 919/467-6151
FAX 919/469-2536

CIRCLE #159



Flymo

- New GCT 20
- Patented & Proven Safety Cutting System
- New JLO Engine with One Year Warranty



PRECISION SMALL ENGINE CO.

FOR MORE DETAILS CALL
1-800-345-1960 or 305-974-1960

CIRCLE #161



Cut Cups The Same Depth Everytime

This cup auger cleans out the last part of each hole. An adjustable ring gives you the exact depth you want.

Call for our Brochure -
800-456-4351



TURF PRODUCTS P.O. Box 164 • Miltona, MN 56354

CIRCLE #163

Keep That Edge



pinhigh
reel sharpening compound

Contact Your Local Distributor or Call Us
Toll Free 1 (800) 422-4748

CIRCLE #165

Formost Construction Co.

Serving the nation for over 30 years.

IRRIGATION SPECIALISTS

"Doing One Thing Well"

P.O. BOX 559
TEMECULA, CALIFORNIA 92593

(909) 698-7270

FAX (909) 698-6170

STATE LIC. #267960

CIRCLE #167

THE ILD^{LP}™ LIGHTNING PROTECTION SYSTEM

patent #5,291,208 and other patents pending
by RABUN LABS, INC.

Automatically detects the presence of lightning BEFORE it gets close enough to do the damage, gives an alarm, switches power sources, AND/OR automatically disconnects power, phones and coax lines until the storm is out of the area, then automatically reconnects.

EASY INSTALLATION!

Models available for protection of irrigation management control & data distribution equipment, pump motors and field satellite controllers, computers & data processing equipment, club house alerting system, and custom design.

Coming soon -- quiet alert for your golf cart!
4407 Vineland Rd., Ste. D-18 • Orlando, FL 32811
407-246-1355 • FAX 407-246-1358

1-800-788-1824

A cost effective, intelligent solution to equipment damage due to lightning.

CIRCLE #160

Exceptional Software...

SCMS

Superintendents
Compliance /
Management
System

"The Choice of Today's
Grounds Managers"

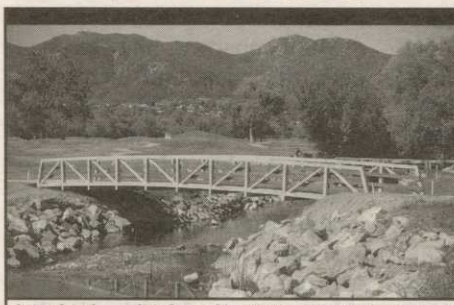
From Equipment Tracking and Employee Training...
To Compliance Reports and Chemical Records

Free Demonstration Diskettes

Call Toll Free (800) 472 8882

Environmental Compliance Systems, Incorporated
21 North Avenue Lake Forest IL 60045

CIRCLE #162



Carlton Oaks Country Club, Santee, CA 10' wide x 60' long, 10,000 lb. capacity

EXCEL

BRIDGE
MANUFACTURING CO.

Golf Course Bridges are our specialty! We fabricate easy-to-install, pre-engineered spans and deliver them anywhere in the USA. Call today for a free consultation.

Our classic design, with a look that stands the test of time.

800/548-0054 (Outside CA)

12001 SHOEMAKER AVENUE, SANTE FE SPRINGS, CA 90670
310/944-0701 • FAX 310/944-4025

CIRCLE #164

"I'm Sold On Courtesy Golf Cup Protectors."

"Every once in a while, we superintendents discover a new edge in maintenance control. The Courtesy Golf Cup Protectors are an inexpensive and smart idea. Each time players reach into a hole, they receive positive reinforcement on course etiquette. Messages like Replace and Fill Divots, Obey Cart Signs and four others are repeated from hole to hole. We know the message sinks in because we see results: better etiquette and less maintenance. The Courtesy Golf Cup Protectors are a real asset to our maintenance program." Rick McGuinness, Woodmere CC, NY.



18 disks per pack - 1 to 100 packs \$11.50 each plus shipping. Personalized Courtesy Disks also available, extra charge. 1746 NW 84th Dr., Coral Springs FL 33071, 305-753-0464

CIRCLE #166

TerraBond



GEOTEXTILES FOR SOIL SEPARATION AND FILTRATION

Economical soil filtration and separation for all landscaping and turf applications. Strong, durable, puncture resistant, pliable and permeable, easy to install. Proven performance nationwide.

CONTECH
Geosynthetic Products
for the Turf Industry

For free information, call toll-free:
1-800-338-1122.
(In Ohio, 1-800-752-8899).

CIRCLE #168

ADVERTISERS' INDEX

RS#	Advertiser	Page
133	A.S.I.	40
111	Allen Power Equipment	14
138	The Andersons	42
143	Applied Biochemists	19
103	Aquatrols	3
113	Becker Underwood	16
129	Brouwer Turf Equip.	34
101	Cedar Chemical	2
106	Ciba	7
168	Contech Construction Products	45
150	Continental Bridge	44
162	Environmental Compliance Systems	45
142	Environmental Products	14
164	Excel Bridge Mfg.	45
116	Fore Par	18
167	Formost Construction Co.	45
151	Furness Golf Construction	44
123	Golf Course Expo	26
110	Highland Bentgrass Commission	14
125	Hoechst-Roussel	31
166	Hole Advertising	45
109	ISK Biotech	12
140	Jacobsen	48
165	Jesco Products/Pinhigh	45
107	John Deere	8-9
144-147	Kalo	47
135	Kirby Markers	40
157	Master of the Links	44
131	Miles Inc.	36
105	Milorganite	6
163	Milona Turf Products	45
114	Otterbine/Barebo	17
127	Page Com	32
126	Partac	32
154	Pavelec Bros. Construction	44
137	Pickseed West	41
117	Precision Small Engine	19
161	Precision Small Engine	45
120	Precision Small Engine	20
155	Precision Tool Prod. Co.	44
153	Quail Valley Turf Farm	44
160	Rabun Labs	45
128	Regal Chemical	34
115	Regal Chemical	17
132	Ryan, Ransomes America Corp.	38-39
122	Seed Research of Oregon	24-25
112	Smithco	15
119	Southern Corp. Promo.	20
136	Spectrum Products	40
130	Standard Golf	35
139	Tee & Green Sod	46
121	Tee-2-Green	22
104	Toro Comm'l. Prod. Div.	4-5
124	Toro Comm'l. Prod. Div.	28-29
156	Trims International Software	44
102	Turf Merchants	3
118	Turf-Seed	21
134	Turflite, Inc.	40
159	Unit Structures	45
108	Verti-Drain/Emrex	11
152	Yard Edge	44
158	York Bridge Concepts	44

Leslie commentary

Continued from previous page

pendence and the Judeo-Christian religion calls us to be "one people."

Henry Louis Gates, chairman of black studies at Harvard University, agrees. Do you?

...

When Dr. Noel Jackson spoke to Maine superintendents on Pythium damage, he said when Pythium hits, it leaves bentgrass but kills poa annua. "How can we get it?" came the hue and cry.

Of course, they didn't want to know; but, if you water abundantly you create conditions for Pythium, whose 35 species are some of the fastest-growing fungi in turf.

...

San Francisco Golf Club's Maynard Garrison, a senior citizen, told American Society of Golf Course Architects (ASGCA) members: "We have few opportunities for exercise. Please take the lead to get rid of golf buggies. They are the bane of the existence of all golfers."

...

From Dr. James Watson, retired Toro executive, speaking to the ASGCA: "By the year 2050 the greatest export from the U.S. to Mexico will be water — not oil, minerals, or anything else."

...

New American Society of Golf Course Architects President Don Knott told members: "Stanley Thomson was absolutely correct when he commented that designing golf courses without having studied the links of the British Isles is akin to a divinity student who has never studied the Bible."