

Golf Course Marketplace

To reserve space in this section, call Mary Anderson 813-898-7077

ADVERTISING INFO.

1994 RATES

	2X	6X	12X
Per col. inch:	\$75.00	\$65.00	\$50.00
Add-on per 1/4":	\$18.75	\$16.25	\$12.50
Logo incl. in ad:	\$40.00	\$40.00	\$40.00

- Rates are per insertion.
- Minimum 2-time insertion.
- Prepayment is required.

Send prepayment & ad copy to:
GOLF COURSE NEWS
 227 Second Ave. N.
 St. Petersburg, FL 33701
 (813) 898-7077
 Fax (813) 825-0923

EMPLOYMENT OPPORTUNITIES

GOLF COURSE CONSTRUCTION

Project Managers, Shapers, Lay-out Specialists needed at once. Must be willing to travel. Fax resume and date available to:

(616) 547-7009

SHAPERS AND SUPERVISORS!

Needed with experience for overseas and domestic jobs. Send resume to:

Intergolf
 P.O. Box 209
 Dobbs Ferry
 New York, NY
 10522-0209

Fax: (914) 693-9506

SEEKING EMPLOYMENT

CONSTRUCTION MANAGER/SUPERVISOR

Seeks new or renovation golf course construction projects. From planning to grow-in. Will travel to all locations. B.S. in Agronomy and Irrigation Engineering.

Call: (813) 924-8963

LEGAL ADS FOR SALE BUSINESS SERVICES

NOTICE OF INVITATION TO BID

Sealed bids for an annual grounds maintenance and golf carts maintenance contract(s) for the Sebastian Municipal Golf Course will be accepted by the City of Sebastian, in the office of the City Clerk, City of Sebastian; 1225 Main Street; Sebastian, FL 32958 until 2:00 p.m. on August 1, 1994. Bid envelopes are to be marked as follows: Bid 1: Grounds Maintenance Contract. Bid 2: Golf Carts Maintenance Contract. The City of Sebastian is seeking bid proposals from companies to provide all materials and labor with proper supervision for the maintenance of grounds and golf carts at the Sebastian Municipal Golf Course. All work will be done in accordance with the standard specifications listed on the specification sheet. Please use this form to respond to the subject bid request. Prospective bidders must contact the City Clerk's office in person, by mail at the above address, or by telephoning (407) 589-5330 for bidding documents and specifications. Questions or concerns should be addressed to the City of Sebastian Golf Course Superintendent, Chris McCarthy and Joseph O'Rourke, Pro-Manager. Bids will be publicly opened and read aloud at 2:00 p.m. on August 1, 1994 in the City Manager's Conference Room. The City reserves the right to reject any and all bids.

ARCH STYLE STEEL BUILDINGS

For Cart & Equipment storage. Factory Direct from \$1.86 sq. ft. Save money on buildings in stock. 20X30; 25X40; 30X50; 40X76. Easy to erect.

ARCHWAY STEEL BUILDINGS
 1-800-344-2724

MUST SELL NOW!—HEALTH REASONS

Beautiful Skyland Lakes Golf Course. 18 holes, new & rebuilt, paved cart paths. Fancy Gap, VA Blue Ridge Parkway near Interstate I-77 & SR 52, Ph.#: (703) 728-4923 or 728-2316. Len Warren, Owner.

ATTENTION: GOLF COURSE OWNERS, OPERATORS, DEVELOPERS AND ARCHITECTS

Now you have the best available people at affordable prices. We will supply you the people for all aspects of golf course construction, turf grow-in, on site maintenance training with certified golf course superintendents anywhere in the world. We specialize in long and short term placement with full insurance coverage worldwide. Call or fax your project needs to:

Office: (714) 528-1185 ext. 27 or 45
 Fax: (714) 524-7255
 (714) 996-9387

GOLF COURSE ACCESSORIES

CUSTOMIZED YARDAGE MARKERS

- ✓ Highest quality bronze markers for tees, 100, 150 & 200; & cart paths
 - ✓ Sprinkler head yardage tags to fit all automatic systems
 - ✓ Yardage books — 1 & 4 color
 - ✓ Laser measure per USGA standards
- For more information, references or samples, contact:

From Tee to Green, Inc.
 1707 Brandywine Trail
 Ft. Wayne, IN 46845
 (800) 932-5223

SAVE 40% OR MORE!

Buy personalized flags factory direct & save 40% or more. Flagpoles, tee markers, etc. also available. Fast personalized service guaranteed. Call toll free.

1-800-476-7005



FOUR SEASONS GOLF COMPANY

P.O. Box 78011
 Greensboro, NC 27427

REAL ESTATE LASER MEASURING

GOLF COURSES WANTED

Southwest Golf is interested in purchasing or leasing golf courses.

Call Dick Campbell at
 (505) 898-0960

TEXAS GOLF COURSES

9 & 18 holes—Statewide. Some with extra land, development lots. Descriptive list available.

TEXAS GOLF PROPERTIES
 1603 Lightsey—Austin, TX 78704
 512/442-7105
 Fax 512/442-1812

LASER MEASURING and SPRINKLER YARDAGE MARKERS

We do it all. Laser measure & installation (same day) of custom metal yardage markers for all types of sprinkler heads. Warranty included. Also tee to green measurements, granite fairway markers. Sprinkler yardage markers may be purchased separately. Contact Nick for samples & references.

Fairway Yardage Designs
 800-36-TAGIT. (368-2448)

CLASSIFIED ORDER FORM

HOW TO ORDER A CLASSIFIED AD

RATES: \$75.00 per column inch (25-35 words, including a bold headline). Each additional 1/4 inch is \$18.75. If ordering a logo, please indicate and include an extra \$40.00; for a blind box, please indicate and include an extra \$15.00. All line ads must be prepaid. All rates are per insertion. For more information, call Mary Anderson at (813) 898-7077. To place your classified ad, mail this form with enclosed payment to:

Golf Course News
 227 Second Ave. N.
 St. Petersburg, FL 33701
 or fax to: (813) 825-0923

Your Name _____
 Company Name _____
 Address _____
 City _____ State _____
 Zip _____ Daytime Phone _____

- Payment enclosed, or
 Charge to my credit card
 Visa/MC _____ Exp. date _____
 Am Ex _____ Exp. date _____
 Signature _____

Please attach separate sheet of paper if extra space is needed.

- Logo
 Blind Box

Golf Course Marketplace

To reserve space in this section, call Mary Anderson 813-898-7077



Furness Golf Construction, Inc.

TIM FURNESS, PRESIDENT

Turn-Key Golf Course Construction
Statewide • Nationwide • Worldwide

QUALITY IS OUR MAIN CONCERN

(616) 547-6133

1101 Bridge Street, Charlevoix, Michigan 49720

CIRCLE #150

P. O. Box 806
201 40TH ST. NE



FORT PAYNE, AL
35967

"CROSSING THE NATION WITH
BRIDGES YOU CAN DEPEND ON"

ENGINEERED AND FABRICATED TO
FIT YOUR GOLF COURSE NEEDS,
FROM THE KEYSTONE (PICTURED)
TO THE ORIENTAL "Edo" SERIES.
PEDESTRIAN, GOLF CART AND
VEHICULAR BRIDGES. SINGLE
SPANS TO 200 FEET AVAILABLE.

CALL TODAY FOR FREE BROCHURES
1-800-749-7515



FABRICATED READY FOR INSTALLATION

CIRCLE #151

Exceptional Software...

SCMS

Superintendents
Compliance /
Management
System

"The Choice of Today's
Grounds Managers"

From Equipment Tracking and Employee Training...
To Compliance Reports and Chemical Records

Free Demonstration Diskettes

Call Toll Free (800) 472 8882

Environmental Compliance Systems, Incorporated
21 North Avenue Lake Forest IL 60045

CIRCLE #152

"I'm Sold On Courtesy Golf Cup Protectors."

"Every once in a while, we superintendents discover a new edge in maintenance control. The Courtesy Golf Cup Protectors are an inexpensive and smart idea. Each time players reach into a hole, they receive positive reinforcement on course etiquette. Messages like Replace and Fill Divots, Obey Cart Signs and four others are repeated from hole to hole. We know the message sinks in because we see results: better etiquette and less maintenance. The Courtesy Golf Cup Protectors are a real asset to our maintenance program." Rick McGuinness, Woodmere CC, NY.

Hole
ADVERTISING

18 disks per pack - 1 to 100 packs \$11.50 each plus shipping.
Personalized Courtesy Disks also available, extra charge.
1746 NW 84th Dr., Coral Springs FL 33071, 305-753-0464



CIRCLE #153

ACCU-GAGE™

NEW!
LIFETIME
WARRANTY

ON BARS WITH
DURA-COAT™

ACCU-GAGE is a precision tool for making highly accurate height-of-cut measurements on greens mowers or other precision mowers.

AVAILABLE IN 15", 18", and 24" bars.

Our LIGHTWEIGHT and RIGID aluminum bars are now treated with DURA-COAT. DURA-COAT wears better than tool steel and enables us to offer this unique LIFETIME WARRANTY.

To order call 1-800-253-2112 or fax 1-313-429-3985.

PRECISION TOOL PRODUCTS CO.
7836 Bethel Church Rd. • Saline, MI 48176

CIRCLE #155

ENGRAVED YARDAGE LABELS

- Bright colors • Fasteners included
- Orders quickly shipped UPS

Free Samples!

NEW ITEM... "THE SOLUTION"

For Areas Without Sprinklers.
Put Your Message Plus Yardage
Anywhere.

Oak
168
C.C.

THE YARD EDGE GOLF CO.
1-800-284-YARD (9273)

P.O. Box 13159
Wichita, KS 67213

CIRCLE #157

Miltona's Sod Stripper

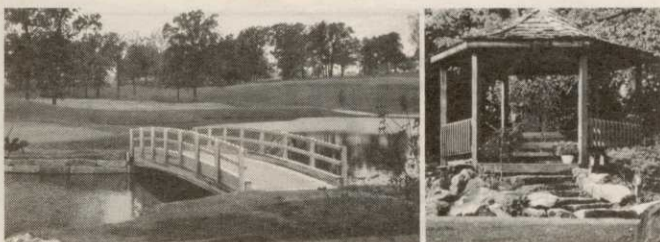
Repair hydraulic oil spills in no time. Stripper comes complete with 4 interchangeable blades. This versatile tool can be used for a variety of turf repairs.

Order Yours Today
Call 800-456-4351

TURF PRODUCTS

P.O. Box 164 • Miltona, MN 56354

CIRCLE #154



Laminated Wood Pedestrian & Vehicular BRIDGES & SHELTERS

Order Direct From The Leading Manufacturer in U.S.

- Complete Prefabricated Packages
- Direct Distribution Throughout the U.S.
- Ready for Fast Erection
- Custom Design & Engineering

UNIT
STRUCTURES
SPECIALTY PRODUCTS GROUP, INC.

CALL
1-800-777-UNIT

Morrisville, NC 27560
Tel. 919/467-6151
FAX 919/469-2536

CIRCLE #156

Homestead case

Continued from page 3

expectations regarding the wetlands.

A local environmental group, Friends of Crystal River (FCR), appealed and the matter remains deadlocked.

"We are not against golf or golf courses," said Scott Jones, president of FCR. "We would be for [the development], if it were on another site."

In 1992 the Chicago Region 5 branch of the federal Environmental Protection Agency (EPA) vetoed the wetland permits. Later that year, the EPA in Washington, D.C., reversed its Chicago branch decision.

According to Jones, the EPA in Washington, under pressure from the Bush Administration, lobbied to overturn the Chicago decision. Michigan Gov. John Engler, an ardent Republican backer, has voiced his support for The Homestead expansion throughout the six-year permitting process.

Jones said he believes the Engler/Bush connection was behind the federal appeal of EPA's own branch office.

"The EPA exceeded its authority in overturning its own Region 5 — the [jurisdiction] really belonged to the Army Corps of Engineers," said Jones. "Michigan is the only state in the country where the EPA permits the local state to grant wetland permits. If politics had not gotten into it, the EPA would not have overturned its Midwest region.

"Is this golf course going to pollute the waters, or isn't it? That is what this should be about."

The decision of the EPA in Washington — rendered May 8, 1992 — was appealed by FCR and six co-litigants: The Sierra Club, National Wildlife Federation, Michigan United Conservation Clubs, Lake Michigan Federation, Michigan Council of Trout Unlimited and the Indiana Chapter of the Izaak Walton League of America. A federal judge granted the environmentalists an injunction against the federal EPA on May 11, 1992. This prohibited construction. It was the last decision before April's pro-Homestead finding and FCR's subsequent appeal.

"It has gone through gauntlet after gauntlet — legal gauntlets, emotional gauntlets and design gauntlets," said Ben Whitfield, town supervisor for Glen Harbor. "[The golf course is a] state-of-the-art design, being sensitive to the environment. The township voted in favor of the golf course. DNR approved it... I'd like to know where the leverage, the pressure is coming from."

Phillips comment

Continued from page 12

ity. Las Vegas has only recently decided to push for this more wholesome, all-encompassing image and — in my humble opinion — the jury remains out as to its profitability.

A similar transformation is taking place in Ledyard, Conn., where the Mashantucket Tribe is adding golf and other resort components to its wildly successful Foxwoods casino complex. But this is a special case. Ledyard is situated between Boston and New York in a heavily populated area. The Foxwoods courses will get significant play irrespective of gaming patrons.

Further, from a golfing perspective, the Greater Vegas area has long been under-supplied, meaning daily-fee and resort development was imminent regardless of whether Las Vegas decided to make The Strip more appealing to "the whole family."

Similar golf development may be inevitable in Loughlin and Fort Thompson, but I'm not so sure the rounds will be there.

July

4-8 — World Scientific Congress of Golf in St. Andrews, Scotland. Contact World Scientific Congress of Golf in the UK at 0334-75560.

19 — Annual Southern Illinois Turfgrass Field Day, Carbondale. Contact 618-453-2496.

19-21 — 3rd Annual Midwest Grounds Management Conference in Normal. Contact Chuck Scot at 309-438-2032.

24-26 — Texas Turfgrass Seminar in Arlington. Contact 806-354-8447.

24-26 — International Lawn, Garden & Power Equipment Expo in Louisville, Ky. Contact 800-558-8767.

27-29 — American Sod Producers Association Summer Convention in Newport, R.I. Contact 708-705-9898.

31-Aug. 2 — Georgia GCSA Summer Conference at Calaway Gardens Resort. Contact Karen White at 706-769-4076.

August

3 — Rutgers Turfgrass Research Field Day in New Brunswick, N.J. Contact 201-285-8300.

16 — Wisconsin Turfgrass Field Day in Madison. Contact Dr. Frank Rossi at 608-262-1490.

18 — Michigan Turfgrass Field Day in East Lansing. Contact Kay at 517-321-1660.

24 — Turf Talk '94 in Chandler, Ariz. Contact Garden West at 602-233-2966.

September

19-21 — Florida Turfgrass Ass'n. 42nd Annual Trade Conference & Show in Ft. Lauderdale. Contact 800-882-6721.

20-22 — Virginia Tech Turf and Landscape Field Days in Blacksburg, Va. Contact J.R. Hall III at 703-231-9736.

October

5-6 — So. Calif. Turfgrass Expo in Costa Mesa. Contact 619-723-0947.

10-13 — Northwest Turf Conference in Seaside, Ore. Contact 206-754-0825.

12-13 — West Texas Turfgrass Conference in Snyder. Contact 806-354-8447.

12-14 — Southwest Annual Turf Conference in Ruidoso, N.M. Contact 505-275-2576.

29-30 — Southwest Outdoor Power Equipment Show in Arlington, Texas. Contact 512-443-7999.

29-Nov. 2 — Georgia GCSA Annual Meeting in Savannah. Contact Karen White at 706-769-4076.

November

1-4 — 6th Annual West Virginia/GCSA Turf Conference & Show in Morgantown. Contact David Tennant at 304-594-1541.

6-9 — 15th Annual International Irrigation Exposition and Technical Conference in Atlanta. Contact 703-573-3551.

8-11 — Turf & Grounds Exposition in Rochester, N.Y. Contact 800-873-TURF.

10-12 — Golf Course Expo in Orlando, Fla. Contact the Golf Course News Conference Group at 207-846-0600.

18-20 — National Golf Foundation Golf Summit '94 in Phoenix. Contact 407-744-6006.

* For more information contact the GC-SAA Education Office at 800-472-7878 or 913-841-2240.

Golf Course Marketplace

To reserve space in this section, call Mary Anderson 813-898-7077

TRIMS gives you more for your money!

TRIMS gives you more benefits and offers you more features than all other grounds management software packages combined! Don't settle for an imitation.

You've always wanted TRIMS! Why Wait?

Call for your free Demo Disk:

TRIMS Software International

3110 North 19th Avenue, Suite 190

Phoenix, AZ 85015

(800) 608-7467

Indicate 5 1/4" or 3 1/2" diskette

CIRCLE #158



PAVELEC BROTHERS
GOLF COURSE CONSTRUCTION CO., INC.

✓ New Construction

✓ Renovation

✓ Field Drainage Systems

TONY PAVELEC
(201) 667-1643

EMIL PAVELEC
(201) 939-6182

98 Evergreen Ave.
Nutley, NJ 07110

CIRCLE #160

Inside Info

Get the jump on your competition by subscribing to the

Golf Course News Development Letter

This twice-monthly newsletter...

- tracks golf course projects under consideration across the nation
- is packed with news items detailing where and when projects will be undertaken, and by whom
- is just \$195 for a year's subscription

For more information contact Editor Peter Blais at 207/846-0600

EXCEL

BRIDGE MANUFACTURING CO.

Golf Course Bridges are our specialty! We fabricate easy-to-install, pre-engineered spans and deliver them anywhere in the USA. Call today for a free consultation.



Carlton Oaks Country Club, Santee, CA 10' wide x 60' long, 10,000 lb. capacity

Our classic design, with a look that stands the test of time.

800/548-0054 (Outside CA)

12001 SHOEMAKER AVENUE, SANTE FE SPRINGS, CA 90670
310/944-0701 • FAX 310/944-4025

CIRCLE #159

Keep Your Divot Seed Mixture Where It Is Used ...



... in Divot Seed & Soil tee buckets next to the tee markers. Available in Cedar or Redwood slats and with companion Trash'M debris buckets.



Ask Your Golf Course Distributor for INNOVATIVE MAINTENANCE PRODUCTS

From

Master of the Links

P.O. Box 283, Lockport, IL 60441-0283
(815) 723-4444 • Fax (815) 723-4485



CIRCLE #161

POND & LAKE LINERS

- ◆ Buy Direct from fabricator 20, 30, 40 mil PVC, Hypalon, HDPE, & VLDPE.
- ◆ Custom fabricated panels of up to 25,000 S.F. available.
- ◆ Material Only, Material & Supervision, or Complete Installation service.

1-800-524-8672

Colorado Lining Company, 1062 Singing Hills Road, Parker, CO 80134. 303-841-2022 Fax 303-841-5780

CIRCLE #162



Flymo

- New GCT 20
- Patented & Proven Safety Cutting System
- New JLO Engine with One Year Warranty

PRECISION SMALL ENGINE CO.

FOR MORE DETAILS CALL
1-800-345-1960 or 305-974-1960



CIRCLE #163

Golf Course Marketplace

To reserve space in this section, call Mary Anderson 813-898-7077

RS#	Advertiser	Page
120	A.S.I.	27
112	Allen Power Equipment	16
103	American Leisure Design, Inc.	3
111	The Andersons	16
123	The Andersons	30
140	The Andersons	54
130	Aquatrols	39
106	Ciba	7
133	Ciba *	43
162	Colorado Lining Co.	52
165	Continental Bridge	53
118	Cushman, Ransomes America Corp.	24-25
101	E-Z-GO	2
152	Environmental Compliance Systems	51
159	Excel Bridge Mfg.	52
116	Flowtronex/PSI	22
135	Fore Par	44
166	Formost Construction Co.	53
150	Furness Golf Construction	51
125	Glenmac	34
129	Golf Course Expo	38
114	Golf Course News Asia-Pacific	18
117	Gundle Lining Systems	23
153	Hole Advertising	51
121	IPM Systems	27
110	ISK Biosciences Corp.	14
122	Jacobsen	28-29
169	Jesco Products/Pinhigh	53
104	John Deere	4-5
143-146	Kalo	55
102	Kirby Markers	3
109	Kubota	11
108	Lofts, Inc.	10
161	Master of the Links	52
167	Mid-Atlantic Services	53
119	Milorganite	26
154	Miltona Turf Products	51
137	Page Com	46
127	Par Aide	36
128	Partac	37
160	Pavelec Bros. Construction	52
142	PBI/Gordon Corporation	56
139	Pennington Seed	49
136	Precision Small Engine	47
163	Precision Small Engine	52
155	Precision Tool Prod. Co.	51
168	Quail Valley Turf Farm	53
164	Rabun Labs	53
126	Regal Chemical	35
141	Spectrum Products	54
105	Standard Golf	6
151	Steadfast Bridge Co.	51
124	Tee-2-Green	32
107	Toro Comm'l. Prod. Div.	8-9
115	Toro Comm'l. Prod. Div.	20
158	Trims International Software	52
132	Turf-Seed	42
134	Turflite, Inc.	44
156	Unit Structures	51
131	Valent *	41
138	Watertronics	48
157	Yard Edge	51
170	York Bridge Concepts	53
113	Zajac Performance Seeds	17

* Appears in regional editions.

THE ILD^{PTM}
LIGHTNING PROTECTION SYSTEM
 patent #5,291,208 and other patents pending
 by RABUN LABS, INC.

Automatically detects the presence of lightning BEFORE it gets close enough to do the damage, gives an alarm, switches power sources, AND/OR automatically disconnects power, phones and coax lines until the storm is out of the area, then automatically reconnects.

EASY INSTALLATION!
 Models available for protection of irrigation management control & data distribution equipment, pump motors and field satellite controllers, computers & data processing equipment, club house alerting system, and custom design.

Coming soon -- quiet alert for your golf cart!
 4407 Vineland Rd., Ste. D-18 • Orlando, FL 32811
 407-246-1355 • FAX 407-246-1358
1-800-788-1824

A cost effective, intelligent solution to equipment damage due to lightning.

CIRCLE #164



Nationwide delivery • Install in less than two hours

Golf Course Bridges!

1-800-328-2047

Thousands in use. Built to last.
 Sponsor Member

CONTINENTAL BRIDGE

Route 5, Box 178, Alexandria, MN 56308 • (612) 852-7500

NGF
 NATIONAL GOLF FOUNDATION

CIRCLE #165

Formost Construction Co.
 Serving the nation for over 30 years.

IRRIGATION SPECIALISTS
 "Doing One Thing Well"

P.O. BOX 559
 TEMECULA, CALIFORNIA 92593

(909) 698-7270
 FAX (909) 698-6170

STATE LIC. #267960

CIRCLE #166

ACCURACY
YOU CAN TAKE TO THE BANK



The **TURF RUNNER 300** offers precisely accurate and efficient application of turf chemicals without troublesome electronic devices. Metering is accomplished by a high performance John Blue ground driven pump operating at 99% accuracy regardless of ground speed. Call today to find out how the **TURF RUNNER 300** is becoming a smart financial decision as well as an environmentally sound one.

- Rates from 8-60 gal/acre on 25' swath
- 200 & 300 gal capacity
- Ground drive accuracy with John Blue L-4600 metering pump

TURF RUNNER 300 Call Toll Free 800-637-0050
 Manufactured by **MID ATLANTIC SERVICES**

CIRCLE #167



QUAIL VALLEY FARM, INC.
 "Growers of Quality Turf Grasses"

- Meyer Z-52 Zoysia
- El Toro Zoysia
- Tall Fescue
- Sprigs
- Tifway II
- Tifdwarf
- Big Rolls
- Midlawn (the new transition zone bermuda grass!)

(800) 666-0007
 P.O. Box 5508
 Little Rock, AR 72215
 (501) 280-0763

CIRCLE #168

Quality with a Twist

A twist of our easy off lid gives you quick access to Pinhigh's quality reel sharpening compound.



pinhigh
 reel sharpening compound

Call 1 (800) 422-4748

CIRCLE #169


LIST RENTAL

GOLF COURSE NEWS

...now offers you the opportunity to reach the decision makers at thousands of golf facilities with an exclusive mailing list.

Call Mary Anderson for details.
(813) 898-7077

YORK BRIDGE CONCEPTS
 A Division of Pelican Marine Enterprises, Inc.



- On-Site Construction
- Consulting and Design Capabilities
- Certified Engineered Drawings Available

1426 W. Busch Blvd. • Tampa, FL 33612 • (800) 226-4178

CIRCLE #170

N.H. golf conference

Continued from page 5

Jean Mackay, staff ecologist, Audubon Society of New York State; Tim Madden, superintendent of Mount Snow Golf Course in Mt. Snow, Vt.; and Superintendent Ken Lallier of The Queechee Club in Queechee, Vt.. Their experiences of working toward an environmentally friendly golf course shed light on the individuality of each course: the varying susceptibility to disease and pests, the different micro-climates and the across-the-board attitudes of golfers.

Also discussed by Mackay, Madden and Lallier was the Audubon Cooperative Sanctuary Program (ACSP), mentioned by Skorulski during his opening remarks. The program, founded by the Audubon Society of New York State, assists courses in promoting the value of wildlife and environment. So far, more than 1,000 golf courses are participating in the program — 15 have achieved ACSP certification.

The conference ended with a presentation by Ward Stone, director of the Wildlife Pathology Unit of the New York State Department of Environmental Conservation. Focusing on the environmental impact of golf courses, he encouraged people to look at what developments are doing — not appearing to do.

However, his suggestion that all golf courses around the country make weekly tours of their courses to pick up dead birds re-polarized conference attendees and left some people with a bitter taste in their mouths.