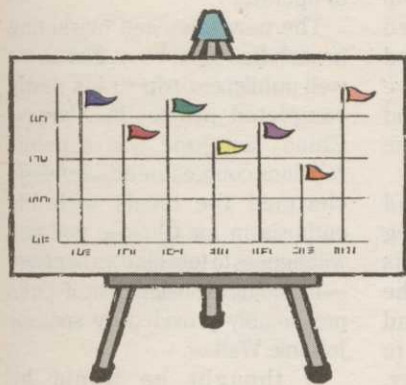


BRIEFS



SERAFIN WRAPS UP ADDITION

BUCYRUS, Ohio — Serafin Golf Course Design, Inc. is completing a nine-hole addition to the Bucyrus Country Club here. The builder for the project is Quality Golf, Inc. of Sunbury, Ohio. In addition, Serafin has begun construction on a nine-hole addition to Memorial Park Golf Course in Kenton, and The Links at Echo Springs, an 18-hole public course in Johnstown. Serafin Design also has been chosen by the city of Piqua to design a nine-hole addition to Echo Hills Golf Course. The Echo Hills project includes renovations to the existing nine holes as well as a new driving range and clubhouse.

WILLIAMSBURG GROUP MOVES

WILLIAMSBURG, Va. — Williamsburg Environmental Group, Inc., has relocated to 516 South Henry St., Suite B, here. The consulting firm of President Ronald Boyd and Vice President Mike Kelly will continue to have the phone number 804-220-6869.



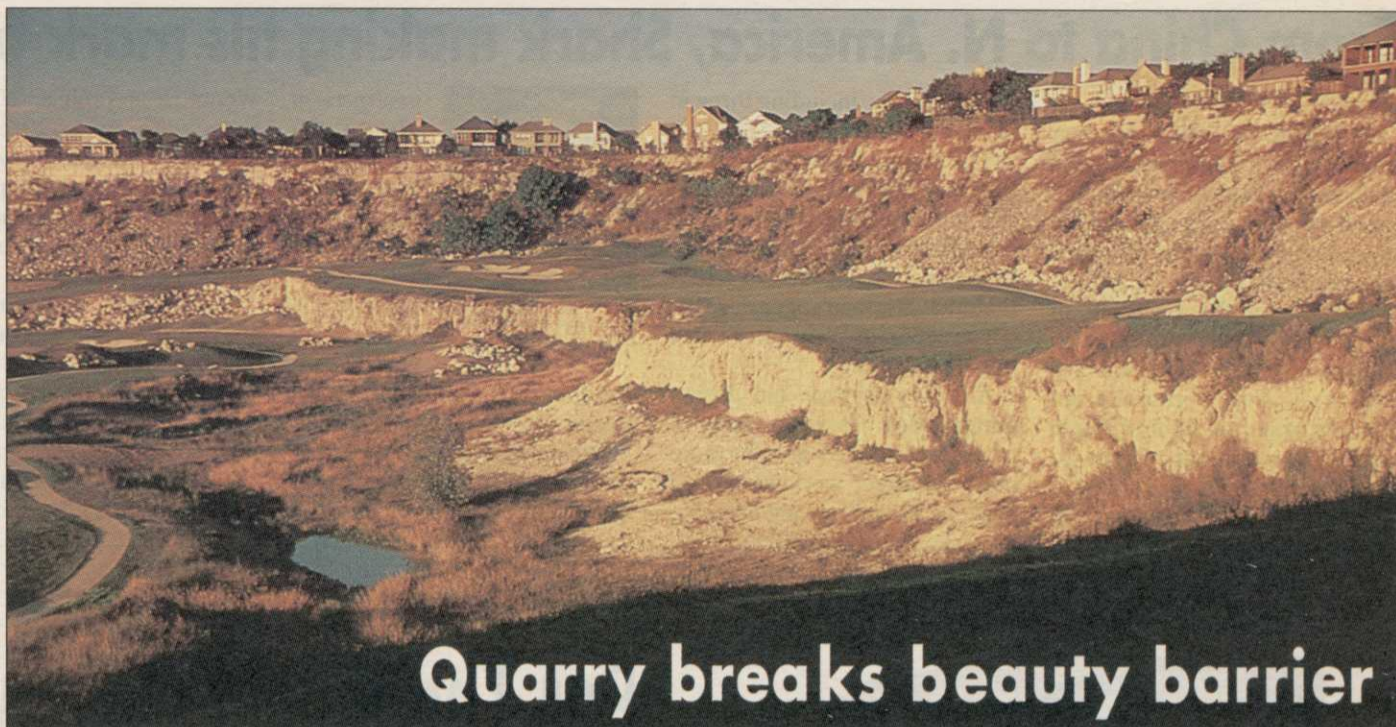
RIDGEWOOD LAKES TOUGH SEMI-PRIVATE

POLK COUNTY, Fla. — Ridgewood Lakes Golf and Country Club, a master-planned community near Haines City, debuted as an 18-hole course in late November, 1993. "First and foremost, this new course promises to be lots of fun for golfers with challenge for all skill levels," said designer Ted McAnlis. "Though not severe, Ridgewood is no pushover." The 7,016-yards, par-72 layout stands as a semi-private club open for public play. Ridgewood is managed by GolfSouth, based in Greenville, S.C.

MUNI INDIAN PEAKS OPENS

LAFAYETTE, Colo. — Indian Peaks Golf Course, a Hale Irwin-designed municipal course, has opened for play. A 168-acre, 18-hole golf course located within a 650-acre residential community, Indian Peaks was built on the Beauprez and Pizek family farms. The development concept focused on outdoor living, sensitivity to the environment and a feeling of open space. "This is not going to be Colorado's most difficult golf course. That's not the intent," Irwin said. "This won't be unplayable, it will be fun. It should have enough variety and challenge to appeal to people of all abilities."

GOLF COURSE NEWS



Quarry breaks beauty barrier

By MARK LESLIE

SAN ANTONIO, Texas — From a mine quarry to a golf course. From a 130-foot-deep hole in the ground to a breathtaking string of golf holes with names like Alcatraz, Escape from Alcatraz, Fire in the Hole, Reload and The Wall. From a vacant lot to a tourist attraction, The Quarry has now been unveiled by its developers.

The Quarry joins a new Tom Weiskopf-Jay Morrish resort course, LaConterra for USAA Insurance at Fiesta theme park, and the Art Hills-Keith Foster collaboration at Hyatt Hill Country Resort as additions to the city's golfing scene. All public, daily-fee facilities, they could be a tourist boom for San Antonio.

"This hits the upscale market, which is

really unaddressed in this area," said Bill Ellis, president of Club Consultants Inc., which is operating the course for developers Jack and Bill Parker and Jay Eddy. "There are 11 municipal courses and one daily-fee, but no one had addressed this particular need."

"We think with [theme park] Fiesta Texas, the Riverwalk and Sea World,

Continued on page 52

Congress in action on environmental front

Endangered species expansion forecast

By JOE DYSART

While endangered eagles and butterflies have often scuttled golf course maintenance and development, it appears the industry has not seen anything yet. Newly proposed rules for the Endangered Species Act promise to create more headaches for those trying to build new golf courses, or maintain existing ones.

Pro-business interests mobilizing against the new rules — which are being pushed in Senate bill S.191 by Sen. Max Baucus (D-Montana) — say the changes will make it more difficult for regulators to



Wetlands and endangered species face changes in the minds of the lawmakers. This footbridge is typical of those bridging wetlands these days.

consider economic hardship before they rule on golf courses subject to endangered species protection.

Moreover, the new rules also call for government regulators to step in earlier to prevent a

Continued on page 49

Wetlands regulations revision gains support

By MARK LESLIE

WASHINGTON, D.C. — While developers await National Academy of Sciences (NAS) recommendations on wetlands delineation, Congress may move forward on legislation that could revolutionize construction in wetland areas.

The NAS study is due out at the end of 1994 and a new delineation manual might not be implemented until 1995 or beyond, according to Mike Kelly, vice president of Williamsburg Environmental Group in Williamsburg, Va. But the Congressional bill (H.R. 3465) awaits action. It was introduced

Continued on page 48

Q & A

Kaneda: Putting Japan's architects on golf's map



At a time when golf construction is at a crossroads in Japan, golf course architect Takeaki Kaneda has stepped to the forefront with famed colleague Shunsuke Kato to form the Japanese Society of Golf Course Architects. They face major struggles but have the background needed to do so. Kaneda graduated from Waseda University and attended graduate school at Ohio State University and then the University of Maryland as a graduate assistant. An accomplished golfer, he has been a producer and commentator for Japanese television and is an adviser for Golf Illustrated and Fortune magazine.

Golf Course News: You and Shunsuke Kato formed Japanese Society of Golf Course Architects partly to improve members' skills and improve golf in your country. How will you do that?

Takeaki Kaneda: We want to contribute to the Japanese golf world through our activities. The biggest problem Japanese golf has is, golfing expenditures are so high. The number-one priority is build more municipal courses. We can do this with the help of local government. Japan is a very centralized country. People have to make a decent living, and when it comes to living standards, in terms of income only, the center of living is not income but how they live and enjoy their lives. I think we can really help.

A big problem is that expenditures of golf are getting higher. We have to do something about the caddy because the caddy makes more money than anybody else. In Tokyo, the female caddy makes \$3,000 a month and doesn't even carry the bag. The golf bag carrier is remote-control. The golf club has to do everything possible for the caddy. One club I know is spending more than \$1 million to have caddies. It has to provide uniforms,

Continued on page 45



CARRICK'S ANGUS GLEN GREENING UP

The 10th hole at Angus Glen Golf Club in the Toronto, Ontario, suburb of Markham is expected to open in August. Designed by Doug Carrick of Don Mills, Ontario, and built by Bruce Evans Ltd., the 18-hole public facility is on 200 acres of Arthur Stollery's 700-acre dairy and racehorse farm. The courses stretches from 5,400 yards on the forward tees to 7,100 yards from championship tees. The subtle front nine, routed through the valley of Bruce Creek, traverses gently rolling land, while the back nine is more spacious and sports bolder features.

McCumber redesigning Sea Pines

HILTON HEAD ISLAND, S.C. — Sea Pines Co., Inc. has selected Mark McCumber & Associates to redesign the Sea Pines Resort Ocean Course here.

Originally designed by George Cobb and constructed in the early 1960s, the Ocean Course is one of four courses at the Sea Pines Resort which also boasts the famous Harbour Town Golf Links.

Proposed changes include upgrading the greens to U.S. Golf Association construction specifications, a new state-of-the-art irrigation system, and start-to-finish concrete cart paths.

Plans also call for enlarged tee boxes sculpted in a free form design to reinforce the desired alignment from the various tees.

McCumber plans to introduce a variety of shapes and sizes to both the putting surfaces and

greenside bunkers to add interest and challenge.

The Sea Pines Ocean Course is the second George Cobb design McCumber has been asked to remodel in the past two years.

His firm recently completed the redesign and remodeling of Gainesville (Fla.) Golf & Country Club and plans to use the same comprehensive approach at Sea Pines, incorporating traditional and classical design principles into the context of the existing physical characteristics of the course.

McCumber lead designer J. Christopher Commins, will work with Cary Corbitt, Sea Pines director of sports and retail, to implement the redesign and upgrade program which is scheduled to begin in December 1994. The owners plan to reopen the course by Labor Day 1995.

Casper, Nash collaborate in Arizona

NORTH SCOTTSDALE, Ariz. — Two-time U.S. Open winner and former Masters champion Billy Casper and course architect Greg Nash have been selected to design the new Terravita Golf Course to be built on Del Webb's new 803-acre, master-planned golf and fitness community here.

"Greg Nash and Billy Casper can design a golf course that's challenging and difficult, or softer and easier, or something in between," said Anne Mariucci, Terravita general manager and Del Webb vice president. The 18-hole championship course is scheduled for completion in late 1994.

According to Nash, with the superb quality of golf courses already in existence in north Scottsdale, he and Casper are incorporating a theme into the facility giving it its own characteristics.

"While some of the finer golf courses in north

Scottsdale have a degree of elevation in their favor," said Nash, "Terravita is positioned in the thick of lush, intense vegetation enabling us to interact and enhance the indigenous vegetation and desert wash experience into the design of our golf holes.

"We have taken full advantage of the many dry washes, majestic saguaros, native vegetation and rolling desert hills that will make Terravita a special course."

Plans call for Terravita to be a par-72, 7,115-yard target-style desert course incorporating four teeing areas into each hole. With just one water hazard, Casper and Nash have integrated extensive grass, sand and waste bunkers along with lateral hazards throughout the location of existing desert washes on 13 of the 18 holes. Hybrid bermudagrass lines the fairways, tees and roughs; the greens feature bentgrass.

Proposed wetlands regulations could break stalemate

Continued from page 43

Nov. 8 by Rep. Gerry Studds, D-Mass., who heads the House Merchant Marine Committee, and Rep. E. "Kiki" de la Garza, D-Texas, chairman of the House Agriculture Committee.

The revolutionary aspect of the bill, Kelly said, is its concept of "mitigation banking." Endorsed by the Bush and Clinton administrations, a mitigation bank puts into motion a system of wetlands debits and credits. A developer who must fill an acre of wetland on his site and has no good place to build a new one, could "buy" one or two acres from the mitigation bank on another property.

"It's exciting," said Kelly, a wetlands scientist who closely follows Congress. "Activist groups fear it is a way of buying a permit. But not if it's done properly. You'd still have to go through the guidelines and demonstrate that you intend to avoid and minimize impacts on wetlands to the greatest extent possible.

"Many times I've gotten a permit for a golf course developer to fill three or four acres of wetlands and we have to create six or eight acres elsewhere on the site. But the wetlands won't be as functional as you intended, or as valuable. So you have mitigation sites throughout the country and no one's monitoring or maintaining them, and they're not serving the function they were intended to. If you

have a properly managed mitigation bank, you have a way to ensure the wetlands will be maintained, monitored and as functional as possible."

The Army Corps of Engineers is studying mitigation banking and how it could be administered. Banks could be state by state or watershed by watershed.

...

The Studds-de la Garza bill would speed up development, mandating that the Corps makes wetland permit decisions within 60 days for areas less than one acre or the permit will be approved automatically. The Clinton Administration had proposed a 90-day period with no automatic issuance.

Under the bill, the Soil Conservation Service would be made the lead agency. Ditching, draining and other wetland activities that were exempt from the wetlands program would be regulated — supporting the administration's regulations.

Kelly believes the final wetlands manual will stand somewhere between the restrictive 1989 manual and the less-restrictive 1987 manual. The 1987 regulations are now in effect, and Kelly said: "A lot of people feel this is a good time to move forward on projects and get them done. The new manual will encompass more land than the 1987 manual."

Meanwhile, the much-ballyhooed bill introduced by Rep. Jimmy Hayes in 1992 is "in limbo," Kelly said.



Redhawk Golf Club, Temecula, California, Hole #12, 168 yard, Par 3

Rated by California Golf Magazine as
#7 of "Best California Public Courses" and
#19 of "Best California Courses - Overall"

THE RONALD FREAM
Golfplan

DESIGN GROUP LTD.
FOUNDED 1972 • WORLD WIDE

Offering world wide experience in
creating Award Winning golf courses.

GOLF COURSE ARCHITECTS / GOLF RESORT MASTER PLANNING
P.O. Box 1823, Santa Rosa, CA 95402 U.S.A.
Tel: (707) 526-7190 Fax: (707) 576-1823

Fight Slow Play

The First and Only Real Yardage Marking System Ever Developed



- **Speeds up play** - proven to save 30 minutes per round at many courses, therefore more income for the course. The Kirby Marker System can pay for itself with increased revenue in a few short weeks.
- **Increases enjoyment of the game** - no walking up and down looking for sprinkler heads, posts or bushes and then "pacing" them off.
- **Unobtrusive** - does not detract from the beauty of the course. Invention allows markers to depress under mowers and carts.
- **Installed** - at many of the World's finest courses - Pebble Beach, Spyglass, the Olympic Club and many more.



KIRBY MARKERS

"The Golf Time-Saving Specialists"

1-800-925-4729

SURE-FLO

Self-Cleaning Strainers and Foot Valves

50 to
2,500 gpm



Patent No.
4822486

Quality and Service
Since 1932

Manufactured by:
Perfection Sprinkler Co.

2077 S. State St.
P.O. Box 1363
Ann Arbor, MI 48106

Phone 313-761-5110
FAX 313-761-8659

