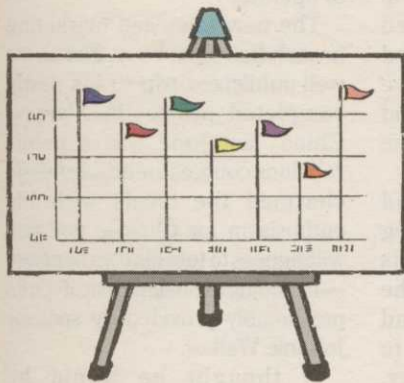


## BRIEFS



## SERAFIN WRAPS UP ADDITION

BUCYRUS, Ohio — Serafin Golf Course Design, Inc. is completing a nine-hole addition to the Bucyrus Country Club here. The builder for the project is Quality Golf, Inc. of Sunbury, Ohio. In addition, Serafin has begun construction on a nine-hole addition to Memorial Park Golf Course in Kenton, and The Links at Echo Springs, an 18-hole public course in Johnstown. Serafin Design also has been chosen by the city of Piqua to design a nine-hole addition to Echo Hills Golf Course. The Echo Hills project includes renovations to the existing nine holes as well as a new driving range and clubhouse.

## WILLIAMSBURG GROUP MOVES

WILLIAMSBURG, Va. — Williamsburg Environmental Group, Inc., has relocated to 516 South Henry St., Suite B, here. The consulting firm of President Ronald Boyd and Vice President Mike Kelly will continue to have the phone number 804-220-6869.



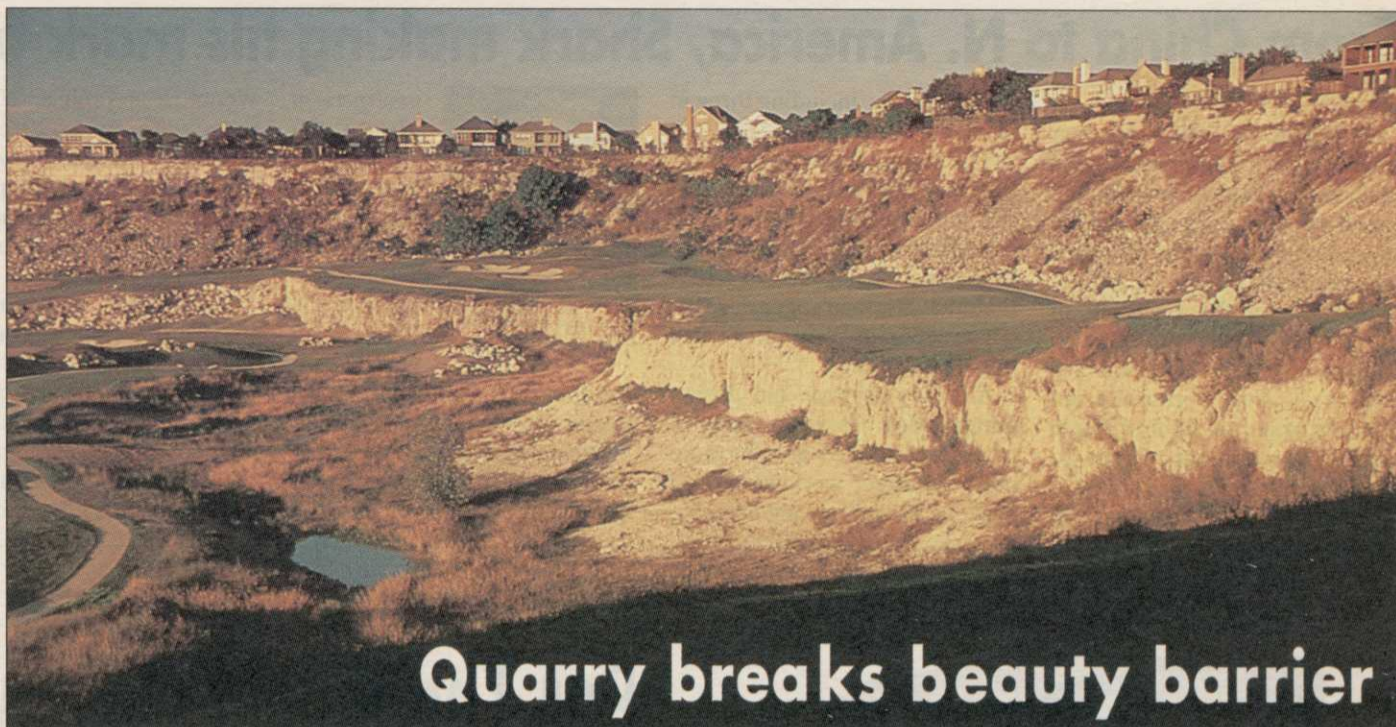
## RIDGEWOOD LAKES TOUGH SEMI-PRIVATE

POLK COUNTY, Fla. — Ridgewood Lakes Golf and Country Club, a master-planned community near Haines City, debuted as an 18-hole course in late November, 1993. "First and foremost, this new course promises to be lots of fun for golfers with challenge for all skill levels," said designer Ted McAnlis. "Though not severe, Ridgewood is no pushover." The 7,016-yards, par-72 layout stands as a semi-private club open for public play. Ridgewood is managed by GolfSouth, based in Greenville, S.C.

## MUNI INDIAN PEAKS OPENS

LAFAYETTE, Colo. — Indian Peaks Golf Course, a Hale Irwin-designed municipal course, has opened for play. A 168-acre, 18-hole golf course located within a 650-acre residential community, Indian Peaks was built on the Beauprez and Pizek family farms. The development concept focused on outdoor living, sensitivity to the environment and a feeling of open space. "This is not going to be Colorado's most difficult golf course. That's not the intent," Irwin said. "This won't be unplayable, it will be fun. It should have enough variety and challenge to appeal to people of all abilities."

GOLF COURSE NEWS



## Quarry breaks beauty barrier

By MARK LESLIE

SAN ANTONIO, Texas — From a mine quarry to a golf course. From a 130-foot-deep hole in the ground to a breathtaking string of golf holes with names like Alcatraz, Escape from Alcatraz, Fire in the Hole, Reload and The Wall. From a vacant lot to a tourist attraction, The Quarry has now been unveiled by its developers.

The Quarry joins a new Tom Weiskopf-Jay Morrish resort course, LaConterra for USAA Insurance at Fiesta theme park, and the Art Hills-Keith Foster collaboration at Hyatt Hill Country Resort as additions to the city's golfing scene. All public, daily-fee facilities, they could be a tourist boom for San Antonio.

"This hits the upscale market, which is

really unaddressed in this area," said Bill Ellis, president of Club Consultants Inc., which is operating the course for developers Jack and Bill Parker and Jay Eddy. "There are 11 municipal courses and one daily-fee, but no one had addressed this particular need."

"We think with [theme park] Fiesta Texas, the Riverwalk and Sea World,

Continued on page 52

## Congress in action on environmental front

## Endangered species expansion forecast

By JOE DYSART

While endangered eagles and butterflies have often scuttled golf course maintenance and development, it appears the industry has not seen anything yet. Newly proposed rules for the Endangered Species Act promise to create more headaches for those trying to build new golf courses, or maintain existing ones.

Pro-business interests mobilizing against the new rules — which are being pushed in Senate bill S.191 by Sen. Max Baucus (D-Montana) — say the changes will make it more difficult for regulators to



Wetlands and endangered species face changes in the minds of the lawmakers. This footbridge is typical of those bridging wetlands these days.

consider economic hardship before they rule on golf courses subject to endangered species protection.

Moreover, the new rules also call for government regulators to step in earlier to prevent a

Continued on page 49

## Wetlands regulations revision gains support

By MARK LESLIE

WASHINGTON, D.C. — While developers await National Academy of Sciences (NAS) recommendations on wetlands delineation, Congress may move forward on legislation that could revolutionize construction in wetland areas.

The NAS study is due out at the end of 1994 and a new delineation manual might not be implemented until 1995 or beyond, according to Mike Kelly, vice president of Williamsburg Environmental Group in Williamsburg, Va. But the Congressional bill (H.R. 3465) awaits action. It was introduced

Continued on page 48

Q &amp; A

## Kaneda: Putting Japan's architects on golf's map



At a time when golf construction is at a crossroads in Japan, golf course architect Takeaki Kaneda has stepped to the forefront with famed colleague Shunsuke Kato to form the Japanese Society of Golf Course Architects. They face major struggles but have the background needed to do so. Kaneda graduated from Waseda University and attended graduate school at Ohio State University and then the University of Maryland as a graduate assistant. An accomplished golfer, he has been a producer and commentator for Japanese television and is an adviser for Golf Illustrated and Fortune magazine.

**Golf Course News:** You and Shunsuke Kato formed Japanese Society of Golf Course Architects partly to improve members' skills and improve golf in your country. How will you do that?

**Takeaki Kaneda:** We want to contribute to the Japanese golf world through our activities. The biggest problem Japanese golf has is, golfing expenditures are so high. The number-one priority is build more municipal courses. We can do this with the help of local government. Japan is a very centralized country. People have to make a decent living, and when it comes to living standards, in terms of income only, the center of living is not income but how they live and enjoy their lives. I think we can really help.

A big problem is that expenditures of golf are getting higher. We have to do something about the caddy because the caddy makes more money than anybody else. In Tokyo, the female caddy makes \$3,000 a month and doesn't even carry the bag. The golf bag carrier is remote-control. The golf club has to do everything possible for the caddy. One club I know is spending more than \$1 million to have caddies. It has to provide uniforms,

Continued on page 45