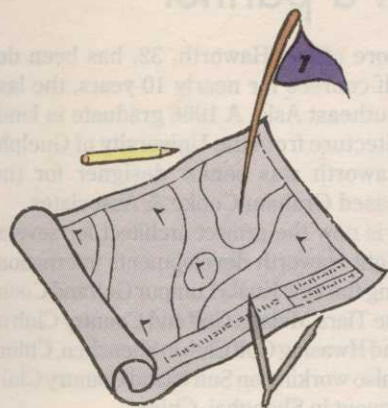


BRIEFS



LAFOY EXCITED ABOUT N.C. SITE

CLAYTON, N.C. — Carolinas Golf Group has opened The Neuse Golf Club along the Neuse River outside Raleigh. "The tract of land is absolutely gorgeous," said course architect John LaFoy. "I did not think a piece of land like this existed east of Raleigh. Its features—rolling hills, hardwood trees, rock outcroppings and the Neuse River." The semi-private/daily fee facility opened to members Dec. 1, 1993 and opened for non-member play Dec. 6.

PLAYER DESIGN OPENS IN TEXAS

BAY CITY, Texas — Rio Colorado Golf Course, a new Gary Player-designed project here, has opened for play. The 18-hole, 6,824-yard, public golf course is operated by Houston-based Golf Services



Gary Player

Group. Rio Colorado Golf Course challenges golfers with two types of golf scenery. The front nine holes of the course plays through the native coastal prairies common to the Texas Gulf Coast. The second nine features Rio Colorado's signature holes which are situated on the wooded bluffs of the Colorado River.

GILMORE GRAVES ADDS FEICK

Dan Feick, landscape architect and irrigation specialist, has left the firm S.D.A., Inc. of Fargo, N. Dak., to join Gilmore Graves Golf, Inc. (GGGI) of Spring Green, Wis. GGGI operates offices in Spring Green, Phoenix, Ariz., and Pierre, S.D. Feick has been designing and supervising irrigation projects throughout the Midwest and will be involved in expanding the golf services of GGGI nationwide.

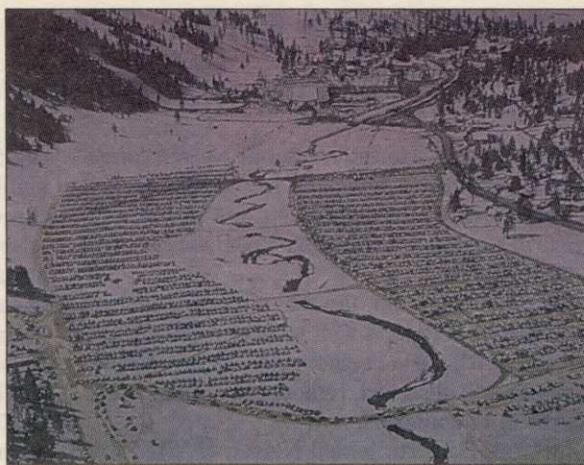
WATER, WATER AT BARDMOOR NORTH

LARGO, Fla. — Bardmoor North Golf Club has added 3 1/2 acres of water on four holes of the front nine. A portion of the lake begins between the 6th fairway and 4th tee, wraps around the 3rd green and then extends along the other side of the 3rd and even dips into the fairway, creating a feeling of an island green for the 3rd hole.

SULLIVAN, CORNISH WORK TOGETHER

VALHALLA, N.Y. — Sullivan Architects of Valhalla has been retained by Westchester County as the project architect and Cornish and Silva Inc. as course architects for the expansion and rehabilitation of Mohansic Golf Course. They are hoping to have golfers playing the expanded facility by the spring of 1997.

GOLF COURSE NEWS



Robert Trent Jones Jr.'s track Best New Mountain Course

By MARK LESLIE

Robert Trent Jones Jr.'s "environmentally correct" Squaw Creek Golf Course in Olympic Valley, Calif., was named the Best Public Mountain Course to open in the last five years, according to the nation's golf course architects.

Tom Fazio's Champion Hills in Hendersonville, N.C., was voted the Best Private Mountain Course, in the poll, conducted by Golf Course News.

In other results, the poll illustrated the scarcity of large-scale public golf developers despite the high percentage of public facilities among openings the last few years. No single developer received more than a handful of votes —



After being used as a parking lot for the 1960 Winter Olympics, Olympic Valley was noticeably improved by Squaw Creek Golf Course.

and, so, no winner was chosen. Even Sunbelt Corp., which over the past three years has opened the 18-course Robert Trent Jones Trail in Alabama, did not receive heavy support. Arvida, which last year was named Best Developer of Communities, and First Golf received similar support.

Perhaps the most memorable vote for Best Developer came from Maury Miller

of Golf Resources, Inc., who caustically cast his ballot for the Resolution Trust Corp., which took over the Landmark Land Co. properties and began auctioning them off.

Meanwhile, Jones's design team won accolades in the *Golf Course News* balloting. Between Don Knott and Bruce Charlton, the Jones International crew

Continued on page 40

Wetlands creators point men for future

By PETER BLAIS

BEAUFORT, S.C. — Steve Beaman's chest no doubt swelled a bit when Spring Island and Old Tabby Golf Links received the South Carolina Wildlife Federation Developer of the Year Award in late January.

Beaman's firm, Ecoshores of Port Orange, Fla., planted large stands of cordgrass, pickerelweed, duck potato, golden canna, arum and other native plants to develop and stabilize wetland areas

around the Arnold Palmer/Ed Seay-designed layout.

That work helped Spring Island secure the coveted award, given by the local chapter of the National Wildlife Federation, according to Spring Island staff naturalist Bruce Lampright.

"We're very pleased with the work Ecoshores has done here," Lampright said. "The plants and grasses are doing very well."

Continued on page 38

Q&A Crenshaw, Coore team hot property

With the GCSAA tournament being played on Barton Creek, the PGA Tour having just played the Lincoln-Mercury Kapalua International on Princeville's Kapalua, and the widely anticipated opening of Sand Hills, golf course architects Ben Crenshaw and Bill Coore are in the news. Managing editor Mark Leslie tracked them down in La Costa, Calif., where Crenshaw was competing in the Mercedes Championships.

Golf Course News: It seems the word is out. Do you get the sense you're a hot architect team and people are after your services more than before?

Crenshaw: No. We really don't think of ourselves that way. If anything, we try to stick to our original philosophy. We have a small organization and we want to remain that way. We enjoy spending time on our projects. I think we're always going to be an organization known for doing a few projects and doing them well and going at



Ben Crenshaw, left, and Bill Coore stand in a natural "blowout" — to them, a bunker — at Sand Hill Golf Course. See story page 41.

a pace at which we're comfortable.

Coore: Do we think we're a hot item? Certainly name recognition is of inordinate value from a business perspective. There is a philosophy that says, 'Do a great deal

Continued on page 42

Weiskopf, Morrish ending partnership

By MARK LESLIE

SCOTTSDALE, Ariz. — Having generated a legacy of renowned golf courses from Arizona to Scotland, Tom Weiskopf and Jay Morrish are "winding down" their golf course design partnership.

"We're not splitting. We really are just phasing out," said Morrish, parrying any talk of a feud with Weiskopf, with whom he has designed 20 courses. Among their gems are Forest Highlands, Troon and Troon North in Arizona, Double Eagle in Ohio, and Loch Lomond Golf Club in Scotland.

In a statement, Weiskopf said: "Competition and design complement each other and after working on the design of 20 golf courses, I find that golf course design is just as stimulating for me as competition. I will continue to utilize my design expertise and competitive experiences to build and design outstanding golf courses, in addition to playing on the Senior Tour."

Weiskopf and Morrish are working on a handful of unfinished courses, along with some long-range projects. And Morrish added, "We will honor any agreements we've made with people with whom we have spoken, if they desire to press forward. In fact, we have not ruled out working together, say, five years from now. If a past client were to call and say, 'I

Continued on page 36

Burns readies Hawks' Nest and ventures into Mexico

WOOSTER, Ohio — Two hundred acres of rolling terrain, streams and ravines provide the easel for architect Stephen Burns' new Hawk's Nest Golf Club here.

A upscale daily-fee course owned by Earl and Betty Hawkins, Hawk's Nest opened its first nine last July 13. The second nine will open this year.

Lakes or streams influence play on nine holes, although there are few forced carries. Tended by superintendent Tim Smith, formerly of Acacia Country Club, the track measures from 4,650 to 6,600 yards.

Central Florida Turf of Avon Park, Fla., built the course with the Fernandina Beach, Fla.-based Burns Golf Design. The two firms have broken ground on The Club at Ravenswood Lake, a development course in nearby Medina.

Meanwhile, in San Sebastian de Amola, Mexico, the Burns-designed Club de Golf Malinalco has opened.

The par-72 track was built by Kenova Construction of West Palm Beach, Fla. An upscale weekend home community for Mexico City residents, it is be-

lieved to be the first large project of its type in the country.

The course stretches from 5,074 to 7,094 yards from several sets of tees, but will play shorter because of its 6,700-foot elevation.

Laid in a scenic valley and surrounded by mountains, it has a 180-foot elevation change. Water, including a large waterfall, enters play on 10 holes. But there are few forced carries.

Weiskopf and Morrish 'still good buddies'

Continued from page 35

really need you two,' we would get back together.

"Tom and I are still buddies. We will be fishing and hunting together and working together for the next two or three years on projects we've begun," Morrish said. "It's time for me to go in another direction. He's got interests, too. He is playing on the Senior Tour. So it was just a good time to do it."

"Another direction" for the 57-year-old Morrish is working more with son Carter, 27, "to get him in a position to take over if he wants to... When Tom and I do a job together, people are paying for Tom and me — not Carter."

Carter, a graduate in landscape architecture who worked with Wadsworth Golf Construction Co. before apprenticing with his father, has agreed to collaborate as a design consultant for Tour pros Howard Twitty and Mark Brooks.

As for Morrish himself, he said: "At 62 or 63, I would like draw some plans for my son, kibitz with people and not get out there on the road 300 days a year. For 25 years I've been on the road."

Morrish attributed the success of the Weiskopf-Morrish team, formed in 1985, with "attention to detail."

Concentrating on Asia-Pacific

Nelson, Wright make Haworth a partner

HONOLULU, Hawaii — Robin Nelson, president of the Nelson & Wright, has appointed Neil Haworth to the position of partner, and has changed the firm's name to Nelson Wright Haworth, Golf Course Architects.

Based in Honolulu, the team of Robin Nelson and Rodney Wright is well known in Hawaii and throughout the Asia-Pacific region. Nelson Wright Haworth has designed, remodeled or planned 72 courses in 17 countries.

In 1990, Haworth joined Nelson & Wright to establish the firm's Singapore operations, and was recently named partner and managing director of

the Singapore office. Haworth, 32, has been designing golf courses for nearly 10 years, the last three in Southeast Asia. A 1986 graduate in landscape architecture from the University of Guelph, Canada, Haworth was senior designer for the Montreal-based Graham Cooke & Associates.

Haworth is now the project architect for several Nelson Wright Haworth developments internationally, including the new Kuala Lumpur Golf and Country Club, The Tiara Melaka Golf and Country Club in Malaysia, and Hwasung Golf Club in Shenzhen, China. Haworth is also working on Sun Island Country Club, an 18-hole layout in Shanghai, China.

