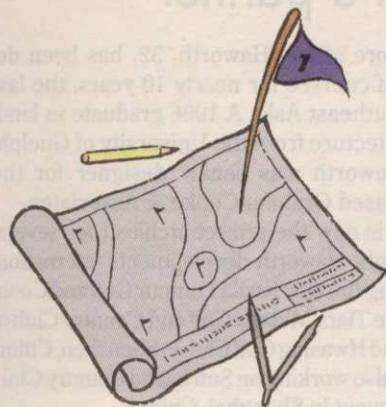


BRIEFS



LAFOY EXCITED ABOUT N.C. SITE

CLAYTON, N.C. — Carolinas Golf Group has opened The Neuse Golf Club along the Neuse River outside Raleigh. "The tract of land is absolutely gorgeous," said course architect John LaFoy. "I did not think a piece of land like this existed east of Raleigh. Its features—rolling hills, hardwood trees, rock outcroppings and the Neuse River." The semi-private/daily fee facility opened to members Dec. 1, 1993 and opened for non-member play Dec. 6.

PLAYER DESIGN OPENS IN TEXAS

BAY CITY, Texas — Rio Colorado Golf Course, a new Gary Player-designed project here, has opened for play. The 18-hole, 6,824-yard, public golf course is operated by Houston-based Golf Services



Gary Player

Group. Rio Colorado Golf Course challenges golfers with two types of golf scenery. The front nine holes of the course plays through the native coastal prairies common to the Texas Gulf Coast. The second nine features Rio Colorado's signature holes which are situated on the wooded bluffs of the Colorado River.

GILMORE GRAVES ADDS FEICK

Dan Feick, landscape architect and irrigation specialist, has left the firm S.D.A., Inc. of Fargo, N. Dak., to join Gilmore Graves Golf, Inc. (GGGI) of Spring Green, Wis. GGGI operates offices in Spring Green, Phoenix, Ariz., and Pierre, S.D. Feick has been designing and supervising irrigation projects throughout the Midwest and will be involved in expanding the golf services of GGGI nationwide.

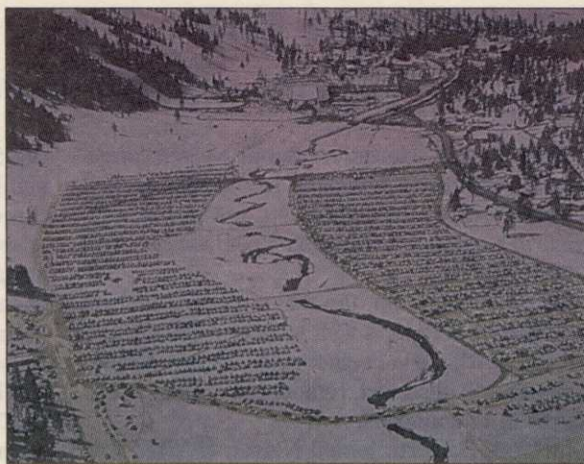
WATER, WATER AT BARDMOOR NORTH

LARGO, Fla. — Bardmoor North Golf Club has added 3 1/2 acres of water on four holes of the front nine. A portion of the lake begins between the 6th fairway and 4th tee, wraps around the 3rd green and then extends along the other side of the 3rd and even dips into the fairway, creating a feeling of an island green for the 3rd hole.

SULLIVAN, CORNISH WORK TOGETHER

VALHALLA, N.Y. — Sullivan Architects of Valhalla has been retained by Westchester County as the project architect and Cornish and Silva Inc. as course architects for the expansion and rehabilitation of Mohansic Golf Course. They are hoping to have golfers playing the expanded facility by the spring of 1997.

GOLF COURSE NEWS



Robert Trent Jones Jr.'s track Best New Mountain Course

By MARK LESLIE

Robert Trent Jones Jr.'s "environmentally correct" Squaw Creek Golf Course in Olympic Valley, Calif., was named the Best Public Mountain Course to open in the last five years, according to the nation's golf course architects.

Tom Fazio's Champion Hills in Hendersonville, N.C., was voted the Best Private Mountain Course, in the poll, conducted by Golf Course News.

In other results, the poll illustrated the scarcity of large-scale public golf developers despite the high percentage of public facilities among openings the last few years. No single developer received more than a handful of votes —



After being used as a parking lot for the 1960 Winter Olympics, Olympic Valley was noticeably improved by Squaw Creek Golf Course.

and, so, no winner was chosen. Even Sunbelt Corp., which over the past three years has opened the 18-course Robert Trent Jones Trail in Alabama, did not receive heavy support. Arvida, which last year was named Best Developer of Communities, and First Golf received similar support.

Perhaps the most memorable vote for Best Developer came from Maury Miller

of Golf Resources, Inc., who caustically cast his ballot for the Resolution Trust Corp., which took over the Landmark Land Co. properties and began auctioning them off.

Meanwhile, Jones's design team won accolades in the *Golf Course News* balloting. Between Don Knott and Bruce Charlton, the Jones International crew

Continued on page 40

Wetlands creators point men for future

By PETER BLAIS

BEAUFORT, S.C. — Steve Beaman's chest no doubt swelled a bit when Spring Island and Old Tabby Golf Links received the South Carolina Wildlife Federation Developer of the Year Award in late January.

Beaman's firm, Ecoshores of Port Orange, Fla., planted large stands of cordgrass, pickerelweed, duck potato, golden canna, arum and other native plants to develop and stabilize wetland areas

around the Arnold Palmer/Ed Seay-designed layout.

That work helped Spring Island secure the coveted award, given by the local chapter of the National Wildlife Federation, according to Spring Island staff naturalist Bruce Lampright.

"We're very pleased with the work Ecoshores has done here," Lampright said. "The plants and grasses are doing very well."

Continued on page 38

Q&A Crenshaw, Coore team hot property

With the GCSAA tournament being played on Barton Creek, the PGA Tour having just played the Lincoln-Mercury Kapalua International on Princeville's Kapalua, and the widely anticipated opening of Sand Hills, golf course architects Ben Crenshaw and Bill Coore are in the news. Managing editor Mark Leslie tracked them down in La Costa, Calif., where Crenshaw was competing in the Mercedes Championships.

Golf Course News: It seems the word is out. Do you get the sense you're a hot architect team and people are after your services more than before?

Crenshaw: No. We really don't think of ourselves that way. If anything, we try to stick to our original philosophy. We have a small organization and we want to remain that way. We enjoy spending time on our projects. I think we're always going to be an organization known for doing a few projects and doing them well and going at



Ben Crenshaw, left, and Bill Coore stand in a natural "blowout" — to them, a bunker — at Sand Hill Golf Course. See story page 41.

a pace at which we're comfortable.

Coore: Do we think we're a hot item? Certainly name recognition is of inordinate value from a business perspective. There is a philosophy that says, 'Do a great deal

Continued on page 42

Weiskopf, Morrish ending partnership

By MARK LESLIE

SCOTTSDALE, Ariz. — Having generated a legacy of renowned golf courses from Arizona to Scotland, Tom Weiskopf and Jay Morrish are "winding down" their golf course design partnership.

"We're not splitting. We really are just phasing out," said Morrish, parrying any talk of a feud with Weiskopf, with whom he has designed 20 courses. Among their gems are Forest Highlands, Troon and Troon North in Arizona, Double Eagle in Ohio, and Loch Lomond Golf Club in Scotland.

In a statement, Weiskopf said: "Competition and design complement each other and after working on the design of 20 golf courses, I find that golf course design is just as stimulating for me as competition. I will continue to utilize my design expertise and competitive experiences to build and design outstanding golf courses, in addition to playing on the Senior Tour."

Weiskopf and Morrish are working on a handful of unfinished courses, along with some long-range projects. And Morrish added, "We will honor any agreements we've made with people with whom we have spoken, if they desire to press forward. In fact, we have not ruled out working together, say, five years from now. If a past client were to call and say, 'I

Continued on page 36

Creating wetlands — a whole new ballgame

Continued from page 35

Ecoshores' contribution to Spring Island's success demonstrates the importance of companies that help golf course developers weed through the regulatory process by creating and preserving wetlands.

"We don't view environmentalists as stirring up the pot," Seay said. "We want to preserve natural areas wherever possible. Sometimes we have to create wetlands that resemble natural areas. We want to

reconstruct that natural look and function. I like what companies like that [Ecoshores] can do with us."

Ecoshores President Steve Beaman said his firm has worked on more than 100 courses over the past 15 years. Projects have ranged from providing a course with a few hundred dollars worth of plant material to the \$1.2 million of vegetation and labor invested at 36-hole Grand Harbor in Vero Beach.

The company is working on

mitigation plans for the LPGA layout being built in Daytona Beach, Fla. Most of the plant material for that facility, and other projects in the five Southeastern states Ecoshores serves, comes from the 2,000-acre plant farm the company maintains in Central Florida.

Ecoshores guarantees its work, meaning it will replace vegetation that dies. Beaman is proud of the 90 percent success rate his plants enjoy. But since plant survival is dependent on

the accuracy of engineering studies analyzing the rise and fall of water levels, Beaman works closely with architects and the wetlands engineers they employ.

Williamsburg Environmental Group Inc. is such a company. The Williamsburg, Va.-based firm provides ecology, planning, regulatory support and engineering services to help architects and developers minimize impacts on existing wetlands.

"Basically you have two types of companies involved in the wetlands process," said Williamsburg Vice President Mike

Kelly. "There are firms, like ours, that work closely with architects to get the permits and do the preliminary and detailed drawings. Then there are the contractors who bid on the projects and do the actual planting."

Kelly's firm has worked on 50 golf projects over the past four years, including wetlands delineation and regulatory permitting jobs at Ault, Clark-designed Kingsmill and Tom Fazio-designed Governor's Land at Two Rivers, both in James City County, Va.

"The architects usually bring us in early," Kelly said. "It's very much a networking type of business."

The American Society of Golf Course Architects noted the importance of wetlands preservation and creation in its guidebook *An Environmental Approach to Golf Course Development*. Several case studies of golf projects included examples of wetlands issues.

Architect Don Knott of Robert Trent Jones II International credited Larry Seeman & Associates of Berkeley, Calif., with selecting the vegetation used in the creation of a six-acre wetland and several other smaller wetland areas at The Links at Spanish Bay in Pebble Beach, Calif.

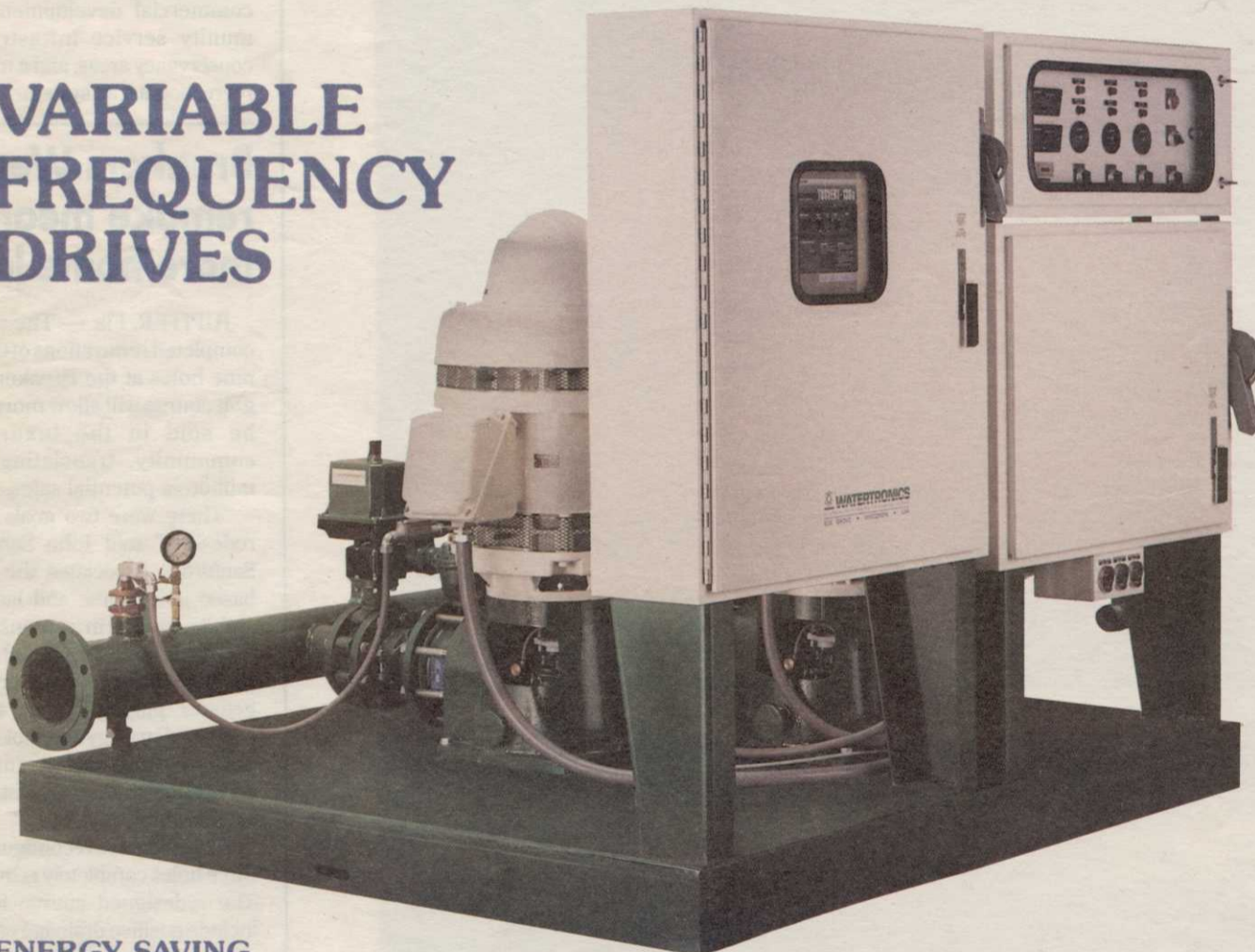
Johnson, Johnson & Roy of Ann Arbor, Mich., assisted with wetland stabilization and creation efforts at Jones Orchards course north of Detroit, he added.

Jones' construction firm performs the actual excavation work in constructing most wetland areas, Knott said, but leaves the revegetation work to companies like LSA and JJ&R who specialize in that area.

"It's getting more difficult to obtain permits all the time," Knott said. "We try to find sites where we can avoid wetlands altogether. But that isn't always possible. That's when wetland firms can be a big help."

WATERTRONICS ENERGY SAVER

VARIABLE FREQUENCY DRIVES



ENERGY SAVING

By varying pump speed, the pump performance closely follows the operating system curve, using precisely the power needed and eliminating the need for a pressure robbing hydraulic regulating valve. Additionally, soft starting reduces costly utility demand charges.

SURGE FREE

Surges are eliminated by using the variable frequency drive (VFD) to start pumps slowly and vary their speed to match systems demands.

FLEXIBILITY

The VFD can be adjusted for additional capacity and pressure for future expansion.

EXPERIENCE

Watertronics, a pioneer in the use of microprocessors to control pump station functions, applies the same time proven technology to VFD systems.

ENGINEERING

Our sales engineers custom design every "ENERGY SAVER" pump station to meet your individual conditions.

Watertronics manufactures a complete line of fixed speed centrifugal, vertical turbine, submersible, and in-line booster stations that utilize our innovative electronic regulating valves. Watertronics also offers retro-fit packages to bring state-of-the-art performance to your present pumping system.

For more information on how we can save you money call **1-800-356-6686**. From Europe call 414-367-5000 or fax 414-367-5551.

 WATERTRONICS
ELECTRONICALLY CONTROLLED PUMPING SYSTEMS

Watertronics, P.O. Box 530, 525 Industrial Drive, Hartland, WI 53029 USA

Graham, Panks start N.C. project for '95 opening

GREENSBORO, N.C. — Former U.S. Open and PGA Champion David Graham and partner Gary Panks, of Graham & Panks International, have begun construction on their 18-hole golf course design in Guilford County, part of an 1,100-acre master planned community under development by the Koury Corp.

The heavily forested and rolling terrain offered Graham/Panks natural contours, existing water courses and protected wetlands in routing the course.

From the back tees, the 7,014-yard layout is a par 72.

Weather permitting, seeding should begin in June 1994. The grand opening will be held in late spring 1995.