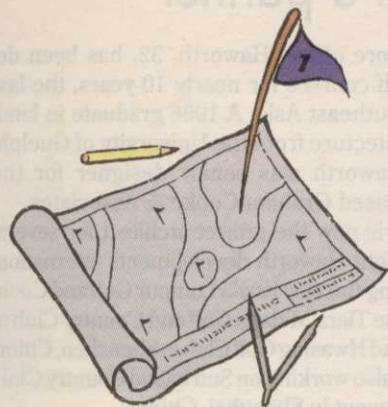


BRIEFS



LAFOY EXCITED ABOUT N.C. SITE

CLAYTON, N.C. — Carolinas Golf Group has opened The Neuse Golf Club along the Neuse River outside Raleigh. "The tract of land is absolutely gorgeous," said course architect John LaFoy. "I did not think a piece of land like this existed east of Raleigh. Its features—rolling hills, hardwood trees, rock outcroppings and the Neuse River." The semi-private/daily fee facility opened to members Dec. 1, 1993 and opened for non-member play Dec. 6.

PLAYER DESIGN OPENS IN TEXAS

BAY CITY, Texas — Rio Colorado Golf Course, a new Gary Player-designed project here, has opened for play. The 18-hole, 6,824-yard, public golf course is operated by Houston-based Golf Services



Gary Player

Group. Rio Colorado Golf Course challenges golfers with two types of golf scenery. The front nine holes of the course plays through the native coastal prairies common to the Texas Gulf Coast. The second nine features Rio Colorado's signature holes which are situated on the wooded bluffs of the Colorado River.

GILMORE GRAVES ADDS FEICK

Dan Feick, landscape architect and irrigation specialist, has left the firm S.D.A., Inc. of Fargo, N. Dak., to join Gilmore Graves Golf, Inc. (GGGI) of Spring Green, Wis. GGGI operates offices in Spring Green, Phoenix, Ariz., and Pierre, S.D. Feick has been designing and supervising irrigation projects throughout the Midwest and will be involved in expanding the golf services of GGGI nationwide.

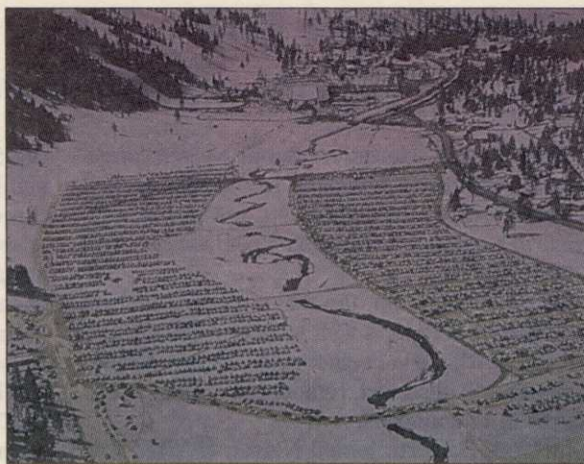
WATER, WATER AT BARDMOOR NORTH

LARGO, Fla. — Bardmoor North Golf Club has added 3 1/2 acres of water on four holes of the front nine. A portion of the lake begins between the 6th fairway and 4th tee, wraps around the 3rd green and then extends along the other side of the 3rd and even dips into the fairway, creating a feeling of an island green for the 3rd hole.

SULLIVAN, CORNISH WORK TOGETHER

VALHALLA, N.Y. — Sullivan Architects of Valhalla has been retained by Westchester County as the project architect and Cornish and Silva Inc. as course architects for the expansion and rehabilitation of Mohansic Golf Course. They are hoping to have golfers playing the expanded facility by the spring of 1997.

GOLF COURSE NEWS



Robert Trent Jones Jr.'s track Best New Mountain Course

By MARK LESLIE

Robert Trent Jones Jr.'s "environmentally correct" Squaw Creek Golf Course in Olympic Valley, Calif., was named the Best Public Mountain Course to open in the last five years, according to the nation's golf course architects.

Tom Fazio's Champion Hills in Hendersonville, N.C., was voted the Best Private Mountain Course, in the poll, conducted by Golf Course News.

In other results, the poll illustrated the scarcity of large-scale public golf developers despite the high percentage of public facilities among openings the last few years. No single developer received more than a handful of votes —



After being used as a parking lot for the 1960 Winter Olympics, Olympic Valley was noticeably improved by Squaw Creek Golf Course.

and, so, no winner was chosen. Even Sunbelt Corp., which over the past three years has opened the 18-course Robert Trent Jones Trail in Alabama, did not receive heavy support. Arvida, which last year was named Best Developer of Communities, and First Golf received similar support.

Perhaps the most memorable vote for Best Developer came from Maury Miller

of Golf Resources, Inc., who caustically cast his ballot for the Resolution Trust Corp., which took over the Landmark Land Co. properties and began auctioning them off.

Meanwhile, Jones's design team won accolades in the *Golf Course News* balloting. Between Don Knott and Bruce Charlton, the Jones International crew

Continued on page 40

Wetlands creators point men for future

By PETER BLAIS

BEAUFORT, S.C. — Steve Beaman's chest no doubt swelled a bit when Spring Island and Old Tabby Golf Links received the South Carolina Wildlife Federation Developer of the Year Award in late January.

Beaman's firm, Ecoshores of Port Orange, Fla., planted large stands of cordgrass, pickerelweed, duck potato, golden canna, arum and other native plants to develop and stabilize wetland areas

around the Arnold Palmer/Ed Seay-designed layout.

That work helped Spring Island secure the coveted award, given by the local chapter of the National Wildlife Federation, according to Spring Island staff naturalist Bruce Lampright.

"We're very pleased with the work Ecoshores has done here," Lampright said. "The plants and grasses are doing very well."

Continued on page 38

Q&A Crenshaw, Coore team hot property

With the GCSAA tournament being played on Barton Creek, the PGA Tour having just played the Lincoln-Mercury Kapalua International on Princeville's Kapalua, and the widely anticipated opening of Sand Hills, golf course architects Ben Crenshaw and Bill Coore are in the news. Managing editor Mark Leslie tracked them down in La Costa, Calif., where Crenshaw was competing in the Mercedes Championships.

Golf Course News: It seems the word is out. Do you get the sense you're a hot architect team and people are after your services more than before?

Crenshaw: No. We really don't think of ourselves that way. If anything, we try to stick to our original philosophy. We have a small organization and we want to remain that way. We enjoy spending time on our projects. I think we're always going to be an organization known for doing a few projects and doing them well and going at



Ben Crenshaw, left, and Bill Coore stand in a natural "blowout" — to them, a bunker — at Sand Hill Golf Course. See story page 41.

a pace at which we're comfortable.

Coore: Do we think we're a hot item? Certainly name recognition is of inordinate value from a business perspective. There is a philosophy that says, 'Do a great deal

Continued on page 42

Weiskopf, Morrish ending partnership

By MARK LESLIE

SCOTTSDALE, Ariz. — Having generated a legacy of renowned golf courses from Arizona to Scotland, Tom Weiskopf and Jay Morrish are "winding down" their golf course design partnership.

"We're not splitting. We really are just phasing out," said Morrish, parrying any talk of a feud with Weiskopf, with whom he has designed 20 courses. Among their gems are Forest Highlands, Troon and Troon North in Arizona, Double Eagle in Ohio, and Loch Lomond Golf Club in Scotland.

In a statement, Weiskopf said: "Competition and design complement each other and after working on the design of 20 golf courses, I find that golf course design is just as stimulating for me as competition. I will continue to utilize my design expertise and competitive experiences to build and design outstanding golf courses, in addition to playing on the Senior Tour."

Weiskopf and Morrish are working on a handful of unfinished courses, along with some long-range projects. And Morrish added, "We will honor any agreements we've made with people with whom we have spoken, if they desire to press forward. In fact, we have not ruled out working together, say, five years from now. If a past client were to call and say, 'I

Continued on page 36

Jones International's Squaw Creek a winner on all fronts

Continued from page 35

finished second to Fazio Golf Course Designers, Inc. in combined votes for Best Design Associate. And, said Jones: "People haven't seen half our work. [Lead designer] Kyle Phillips has done a lot of work in Europe, and Gary Linn has done a lot of work in Asia."

•••

For Jones, who said he does "a lot of my work in the mountains," Squaw Creek follows renowned designs of Keystone Ranch and

Sheraton Steamboat Springs in Colorado, Elkhorn and Sun Valley in Idaho, and Sugarloaf in Maine.

Even before it opened July 4, 1992, Squaw Creek received notoriety not only for its design but the fact that, after an eight-year-long approval process, it opened as "chemical-free."

"Squaw Creek is a '90s golf course in that it is very much designed from an environmental point of view, both protecting and restoring the environment," Jones said. "It is also avant-garde and

very different from a design standpoint. The course has two characters: the pine forest edges at the bottom of the mountain; then a transition into the meadows where you play more target golf. The contrast from a player's point of view is delightful."

Eight years of tedious negotiations with government authorities and the public led to 100 routing plans, and, finally, an improved property, Jones said.

Part of the property had served as a parking lot for the 1960

Olympics, "built by none other than the Army Corps of Engineers," Jones said.

Also, Phillips, the project's lead designer, said environmentalists "wanted to protect this 'pristine mountain meadow.' Well, we found that what was feeding this 'pristine' field was leachate from old septic tanks from neighbors. You couldn't give your property away there when this all started in the early 1980s. Values have probably quadrupled."

Meanwhile, Phillips said: "We

have to irrigate a lot of the 'wetlands' to keep them wetlands."

"The process itself," Jones said, "became a very, very important addition to the environmental pool of golf courses, which started at [Jones-designed] Spanish Bay in California and courses along the Carolina coast. This is the first time it had been done in a mountain setting."

Jones praised superintendent Carl Ryggs, who left environmentally sensitive Spanish Bay to join Squaw Creek halfway through construction.

"Carl declined to use any herbicides on the grasses, which was extraordinary. And yet he maintains the course very firm but hard and true," said Jones. "This can only be done in mountains. You can't abandon herbicides and pesticides where you don't have a very cold-snap season that controls the insects naturally."

ENVIRONMENTAL DESIGN

Saying he agrees with much of the "ecotopian philosophy of California," which calls for cleaner air, fresher water and better golf courses, Jones added: "I have adjusted our design philosophy to accommodate that point of view. I think Squaw Creek is a mountain example of that genre, which we will see more of in the '90s. It's an environmentally correct golf course."

THE JONES INTERNATIONAL TEAM

Jones praised his design team, saying: "I think we have a marvelous atmosphere within our office... We have open discussions on what makes a course better. We do cross-referencing, cross-designing, alternative plans, alternative thinking in the field. There is no ego involved. We have very skilled individuals who want to design better golf courses and to make better architects of each other. They're always willing to learn and listen, and to teach younger people. Our philosophy is very collegiate."

John Cook, Hurdzan on Palm Desert project

PALM DESERT, Calif. — Michael Hurdzan and PGA touring pro John Cook are designing two championship 18-hole courses for the city of Palm Desert.

The 540-acre property will include construction of an additional 576 villas for Marriott's vacation ownership program, 40 acres for a combination of single family houses and condominiums on the golf courses, two hotel sites, a conference center and a sports park. In addition a 10 acre office/medical site is also proposed. The plan also includes the 26-1/2 acre Desert Springs Marketplace, the first phase of which is under construction.

Course construction is expected to begin this spring.



For The Finest Quality, Weed-Free Turfgrass...

RegalStar®

HAS NO EQUAL. PERIOD!

Hundreds of superintendents from coast to coast say "nothing can match the results." Nothing gives them the quality turfgrass of RegalStar® pre-emerge herbicide.

A single application provides total

control of noxious annual grasses and weeds while supplying 100% of the slow-release nitrogen needed for the entire growing season. Until you've used RegalStar®, you haven't used the best.

Call Us!

1-800-621-5208

We'll tell you how it works and why it works so well. We'll also give you the names of some superintendents in your area who are using it, though you probably already know.

P.O. Box 900 • Alpharetta, GA 30239 • 404-475-4837

