

## Finding faulty underground power lines

Ditch Witch has introduced a Subsite Fault Finder system for locating faults in communication and power lines. The Fault Finder includes an A-Frame receiver and transmitter unit which detects leakage by measuring voltage differences in the ground.

The transmitter produces an initial 2,500-volt pulse to break down built-up corrosion on the cable. Typical normal voltage is 50 volts, permitting clean fault identification.

For more information, contact Ditch Witch c/o The Charles Machine Works, Inc., P.O. Box 66, Perry, Okla., 73077; or call 405-336-4402.

CIRCLE #301

## Pre-fab covered bridges from Rock

James H. Rock along with Industrial Steel Inc. have introduced their pre-engineered, pre-fabricated covered bridge for pedestrian and golf cart traffic. These structures are available in lengths from 30 to 120 feet and a clear usable width of 6 feet. Designed and built with the economic advantages of production fabrication but with the appearance of custom workmanship, these bridges are delivered in one or two sections and are ready to place via crane.

For more information, contact James H. Rock, 324 Bonnie Dr., Warner Robins, Ga., 31088; or call 912-329-9720.

CIRCLE #302

## Low-pressure sprinkler heads from Toro

Toro's Irrigation Division has announced an addition to its new line of low-pressure, low-precipitation rate large turf sprinkler heads. The 730/750 Series is designed for slower absorbing soils and for operating under a wide range of pressures.

Developed in conjunction with landscape architects and irrigation consultants, the 730 and 750 sprinklers have a 3-inch pop-up to clear tall grasses, color-coded nozzles for easy identification during installation and a variable stator to maintain constant rotation speeds no matter which nozzle is installed.

For more information, contact Toro's Irrigation Division, 5825 Jasmine St., Riverside, Calif., 92504-1183; or call 909-688-9221.

CIRCLE #303

## Classen sod cutter

Classen has added the new model SC-18 self-propelled 18-inch sod cutter to its line of turf equipment. The machine is powered by a 5.5 Honda engine and will cut sod up to a 2 1/2" depth. This heavy duty cutter is designed for golf course maintenance, rental cemeteries, and landscapers.

For more information, contact Classen at 1403 Pine Industrial Road, P.O. Box 172, Norfolk, Neb., 68701; or call 402-371-2294.

CIRCLE #304

# Golf Course Marketplace

To reserve space in this section, call Mary Anderson, 813-576-7077

## ADVERTISING INFO.

### 1993 RATES

	2X	6X	12X
Per col. inch:	\$60.00	\$55.00	\$40.00
Add-on per 1/4":	\$15.00	\$13.75	\$10.00
Logo incl. in ad:	\$30.00	\$30.00	\$30.00

- Rates are per insertion.
- Minimum 2-time insertion.
- Prepayment is required.

Send prepayment & ad copy to:

**GOLF COURSE NEWS**  
7901 4th St. N., #311  
St. Petersburg, FL 33702  
(813) 576-7077  
Fax (813) 579-9788

## REAL ESTATE

### GOLF COURSES WANTED

Southwest Golf is interested in purchasing or leasing golf courses.

Call Dick Campbell at  
(505) 898-0960

### TEXAS GOLF COURSES

9 & 18 holes — Statewide.  
Some with extra land, dev. lots.  
Descriptive list available.

**TEXAS GOLF PROPERTIES**  
1603 Lightsey — Austin, TX 78704  
512/442-7105 • Fax 512/442-1812

### NEW JERSEY GOLF REALTY SPECIALIST

**JARED MARCH**  
PROPERTIES • INC

(908) 741-4888

FAX (908) 741-7885

Confidential real estate services.  
List — Sell — Develop

## FOR SALE

### FOR SALE

Concrete cart path paver. Used once. Call Keith Acklie.

(817) 430-3289

### FOR SALE

Concrete Cart Path Paver  
Used Once  
Like New!

**T.D.M., INC.**  
Call (604) 689-0180

### POND LINERS

Buy direct from fabricator 20 & 30 mil. P.V.C. Made to order. Under 20 cents per sq. ft. Installation or supervision available. Call...

**COLORADO LINING COMPANY**  
800-524-8672 or 303-841-2022

### STEEL BUILDINGS

Save up to 50% on Arch Style Buildings. Factory Clearance. 25x30; 40x40; 50x100 & others. Factory Direct.

**UNIVERSAL STEEL**  
1-800-548-6871

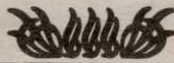
### PIPE LOCATOR

"The Locat". Locates, traces underground pipes, including drain pipes made of PVC, ABS, steel & cement. Finds sprinklers, valves & clogs. Used by hundreds of golf courses. Price: \$79.50. Bloch & Co., Box 18058, Cleveland, OH 44118. (216) 371-0979.

## BUSINESS SERVICES

Golf course, athletic field renovations & new construction. Sodding, sprigging, row planting, fairway renovations. Complete turn key operations. Products include: Vamont Bermuda; Tif & Tif II Bermudas; Meyer Z-52 Zoysia; Blended Fescue.

**Mid Tenn Turf, Inc.**  
Rt. 3, Box 3199  
Manchester, TN 37355  
Phone (615) 728-0583



**Mid Tenn Turf, Inc.**

## GOLF COURSE SHAPING

### SHAPER

Experienced International Shaper  
Looking for Overseas Position. Available October 1, 1993.

(501) 225-0736

## BUSINESS OPPORTUNITIES

### GOLF IN ANY WEATHER—ANYTIME

Future Golf, Inc. has developed a golf concept patented in the U.S., Canada & Great Britain (Japan pending) in which you can play a round of golf in any weather at any time on marginal land of 7 acres. Will sell patents or form joint venture. Write to 25597 W. Drake Rd., Barrington, IL 60010. (708) 381-2427.

## EMPLOYMENT

Midwest based golf course construction company needing shapers and supervisory personnel. Send resume and information to: M.A.G., 7709 N.W. Milrey Drive; Kansas, City, Missouri 64152-2138.



### GOLF COURSE/HOMESITE PROJECT SEEKING PARTNERS

10 PARTNERS OR LESS, WITH 250K OR MORE, to raise 2.5M to form S-Corp, to take over a Bob Lohmann design, 7000 yd. course with 64 acres for future homesite development on very hot U.S. 41 Fox Cities, Appleton/Green Bay corridor. Principals only.

(414) 337-9999

## LASER MEASURING

### LASER MEASURING and SPRINKLER YARDAGE MARKERS

We do it all. Laser measure & installation (same day) of custom metal yardage markers for all types of sprinkler heads. Warranty included. Also tee to green measurements, granite fairway markers. Sprinkler yardage markers may be purchased separately. Contact Nick for samples & references. Fairway Designs of Florida, 800-36-TAGIT.

## GOLF COURSE ACCESSORIES

### CUSTOMIZED YARDAGE MARKERS

- ✓ Highest quality bronze markers for tees, 100, 150 & 200; & cart paths
  - ✓ Sprinkler head yardage tags to fit all automatic systems
  - ✓ Yardage books — 1 & 4 color
  - ✓ Laser measure per USGA standards
- For more information, references or samples, contact:

**From Tee to Green, Inc.**  
1707 Brandywine Trail  
Ft. Wayne, IN 46845  
(800) 932-5223

### SAVE 40% OR MORE!

Buy personalized flags factory direct & save 40% or more. Flagpoles, tee markers, etc. also available. Fast personalized service guaranteed. Call toll free.

1-800-476-7005



P.O. Box 78011  
Greensboro, NC 27427

### WHY HASSLE WITH SEVERAL VENDORS?

- Scorecards
- Sprinkler Tagging
- Yardage Books
- Fairway Markers
- Laser Measuring
- Tee Signs (wood or granite)

Call **FORE BETTER GOLF, INC.**  
1-800-468-8672



October

4-Dec. 10 — Rutgers Professional Golf Turf Management School in New Brunswick, N.J. Contact Cook College at 908-932-9271.

6-8 — How To Seminar on Golf Marketing in Daytona Beach, Fla. Contact Jim Castelo at 407-321-6322.

10-12 — NGF Seminar on Golf Ranges and Other Non-Traditional Facilities in Washington D.C. Contact Roger Yaffe at 407-744-6006.

14 — GCSAA seminar on The Microbiology of Turfgrass Soils in East Lansing, Mich. \*

18-19 — GCSAA seminar on Golf Course Restoration, Renovation and Construction Projects in Guelph, Ontario, Canada. \*

19 — Metropolitan GCSA Field Day in Rye, N.Y. Contact 203-656-0600.

19-21 — Golf Development Institute International in Las Vegas, Nev. Contact Hilary Kish at 714-499-5340.

21-22 — GCSAA seminar on Business Communication and Assertiveness Techniques in Melville, N.Y. \*

25 — GCSAA seminar on Turfgrass Stress Management in Little Rock, Ark. \*

26 — GCSAA seminar on Irrigation Scheduling Techniques in Little Rock, Ark. \*

26-28 — 48th Annual Okla. Turfgrass Conference & Trade Show in Tulsa. Contact Tonya Murray at 918-251-4868.

31-Nov. 3 — International Irrigation Exposition and Technical Conference in San Diego, Calif. Contact 703-524-1200.

31-Nov. 3 — National Institute on Park & Grounds Management Inc.'s 23rd Annual Education Conference in Denver. Contact 414-733-2301.

November

1-2 — GCSAA seminar on Environmental Considerations in Golf Course Management in Bellevue, Wash. \*

5 — GCSAA seminar on Maximizing Turfgrass Disease Control in Rhinelander, Wis. \*

7 — Michigan Women's Golf Summit I at Ypsilanti, Mich. Contact 313-487-0407.

8-9 — Michigan Golf Summit III at Ypsilanti, Mich. Contact 313-487-0407.

8-9 — GCSAA seminar on Golf Course Construction Techniques and Management in Fargo, N.D. \*

9 — GCSAA seminar on Irrigation Efficiency in Rochester, N.Y. \*

9-12 — Turf & Grounds Exposition in Rochester, N.Y. Contact New York State Turfgrass Ass'n at 800-873-TURF.

10 — GCSAA seminar on Personnel Functions of the Golf Course Superintendent in West Palm Beach, Fla. \*

11-12 — GCSAA seminar on Disease Identification and Control in Hudson, Ohio. \*

14-16 — Golf Course News Public Golf '93 Conference in Charleston, S.C. Contact GCN conference group at 207-846-0600.

14-17 — Clemson Golf Turfgrass Conference and Championship in Myrtle Beach, S.C. Contact 800-476-GCSA.

14-18 — Professional Grounds Management Society's 82nd Annual Conference in Baltimore. Contact 410-584-9754.

15 — GCSAA seminar on Maximizing Turfgrass Disease Control in Myrtle Beach, S.C. \*

15-16 — GCSAA seminar on Golf Course Restoration, Renovation and Construction Projects in St. George, Utah. \*

15-16 — Oregon Turf and Grounds Maintenance Exhibit in Portland. Contact D.L. Tom Miller at 503-635-6867.

15-18 — Green Industry Expo/93 in Baltimore. Contact 404-973-2019.

17 — GCSAA seminar on Turfgrass Stress Management in Oklahoma City. \*

19 — GCSAA seminar on The Microbiology of Turfgrass Soils in Tehachapi, Calif. \*

Continued on next page

# Golf Course Marketplace

To reserve space in this section, call Mary Anderson, 813-576-7077

**WINTERGREEN**  
**Turf Covers**

For **BETTER** Cold-Weather Turfgrass Protection

- Guards against winter kill and desiccation.
- UV resistant.
- Durable & reusable.
- Less debris cling.
- Less water absorption and retention.
- Better germination atmosphere.
- Maximizes play.

**CONTECH**  
CONSTRUCTION PRODUCTS, INC.  
For free info pack and sample, call toll-free: 1-800-338-1122. (In Ohio, 1-800-752-8899).

CIRCLE #150

**Keep That Edge**

**pinhigh**<sup>®</sup>  
reel sharpening compound

Contact Your Local Distributor or Call Us  
Toll Free 1 (800) 422-4748

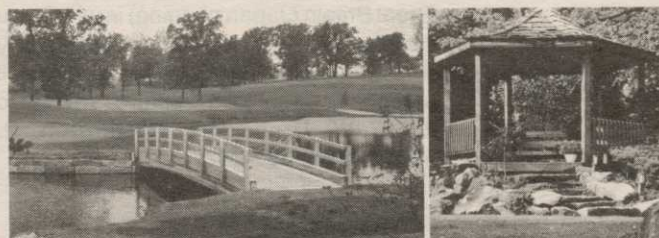
CIRCLE #152

**TRIMS**  
Grounds Management Software  
Supports GCSAA S&R

- Personnel & Labor Records
- Equipment Service Records
- Chemical Application Logs
- Spare Parts Inventory
- Budget & Expenses
- And more!

Call or write for your free TRIMS Demo Disk:  
TRIMS Software International • 6220 E. Thomas Road #303  
Scottsdale, AZ 85251 • (800) 733-9710

CIRCLE #154



**Laminated Wood Pedestrian & Vehicular BRIDGES & SHELTERS**

Order Direct From The Leading Manufacturer in U.S.

- Complete Prefabricated Packages
- Ready for Fast Erection
- Direct Distribution Throughout the U.S.
- Custom Design & Engineering



CALL 1-800-777-UNIT

Morrisville, NC 27560  
Tel. 919/467-6151  
FAX 919/469-2536

CIRCLE #156

Exceptional Software...

**SCMS** Superintendents Compliance / Management System

**"The Choice of Today's Grounds Managers"**

From Equipment Tracking and Employee Training...  
To Compliance Reports and Chemical Records

Free Demonstration Diskettes  
Call Toll Free (800) 472 8882  
Environmental Compliance Systems, Incorporated  
21 North Avenue Lake Forest IL 60045

CIRCLE #151

Keep Your Divot Seed Mixture Where It Is Used ...

... in Divot Seed & Soil tee buckets next to the tee markers. Available in Cedar or Redwood slats and with companion Trash<sup>™</sup> debris buckets.

Ask Your Golf Course Distributor for **INNOVATIVE MAINTENANCE PRODUCTS**

From *Master of the Links*

P.O. Box 283, Lockport, IL 60441-0283  
(815) 723-4444 • Fax (815) 723-4485

CIRCLE #153

**QUAIL VALLEY FARM, INC.**

"Growers of Quality Turf Grasses"

- Meyer Z-52 Zoysia
- El Toro Zoysia
- Tall Fescue
- Sprigs
- Midlawn
- Tifway II
- Tifdwarf
- Big Rolls

(800) 666-0007  
P.O. Box 5508  
Little Rock, AR 72215  
(501) 280-0763

CIRCLE #155

**HARCO DUCTILE IRON FITTINGS FOR GOLF COURSE IRRIGATION SYSTEMS**

Sizes 2" through 12", all configurations including "knock-on" repair couplings. High Strength, high corrosion resistance.

The Harrington Corporation  
P.O. Box 10335  
Lynchburg, Va 24506  
804-845-7094 Fax 845-8562

CIRCLE #157



# Golf Course Marketplace

To reserve space in this section, call Mary Anderson, 813-576-7077

RS#	Advertiser	Page
134	The Andersons	33
121	Carroll Childers	20
109	Cartrol Div. of Invisible Fence	12
117	Club Car	16
150	Contech Construction Products	36
158	Continental Bridge	37
131	Davenport Seed Corp./Warren's	32
151	Environmental Compliance Systems	36
101	Flowtronex	2
106	Fore Par	9
162	Formost Construction Co.	37
160	Greenscape Pump Services	37
104	Jacklin Seed	4, 5
139	Jacobsen	40
152	Jesco Products	36
137	Lester Electrical of Nebraska	38
153	Master of the Links	36
111	Melex USA	13
116	Melex USA	15
103	Millcreek Manufacturing	3
128	NOR-AM Chemical Co.	29
124	O.M. Scott	23
125	O.M. Scott	24, 25
129	Ohio Turfgrass	30
123	Otterbine/Barebo	21
140	Par Aide	6
133	Partac	33
159	Pavelec Bros. Construction	37
136	Perfection Sprinkler	34
110	Plunkett Webster	13
114	Plunkett Webster	15
115	Precision Small Engine	15
164	Precision Tool Prod. Co.	37
155	Quail Valley Turf Farm	36
112	Ransomes, Ransomes America Corp.	14
126	Regal Chemical	26
118	Rocky Mt. Turfgrass	17
107	Standard Golf	10
119	Syncroflo	18
157	The Harrington Corporation	36
127	Toro Comm'l. Prod. Div.	28
105	Toro Comm'l. Prod. Div.	7
154	Trims International Software	36
113	Trion Lifts	15
102	Turf Merchants	3
108	Turf Merchants	12
156	Unit Structures	36
122	W. A. Cleary Chemical	21
120	Watertronics	19
161	Yard Edge	37
163	York Bridge Concepts (Pelican)	37



Nationwide delivery • Install in less than two hours

## Golf Course Bridges!

**1-800-328-2047**

Thousands in use. Built to last.

Sponsor Member




Route 5, Box 178, Alexandria, MN 56308 • (612) 852-7500

CIRCLE #158



## PAVELEC BROTHERS GOLF COURSE CONSTRUCTION CO., INC.

- ✓ New Construction
- ✓ Renovation
- ✓ Field Drainage Systems

**TONY PAVELEC**  
(201) 667-1643

**EMIL PAVELEC**  
(201) 939-6182

**98 Evergreen Ave.**  
**Nutley, NJ 07110**

CIRCLE #159

## ENGRAVED YARDAGE LABELS



• Bright colors • Fasteners included • Orders quickly shipped UPS

**Free Samples!**

**NEW ITEM... "THE SOLUTION"**

For Areas Without Sprinklers. Put Your Message Plus Yardage Anywhere.

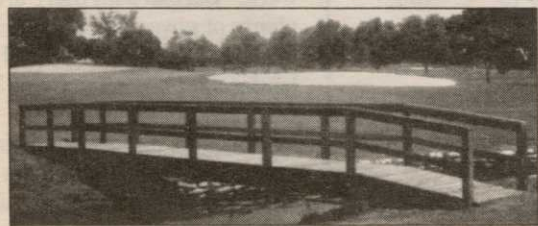
**Oak 168 C.C.**

**THE YARD EDGE GOLF CO.**  
1-800-284-YARD (9273)

P.O. Box 13159  
Wichita, KS 67213

CIRCLE #161

## BRIDGES AND WALLS



- On-Site Construction
- Consulting and Design Capabilities
- Certified Engineered Drawings Available

**YORK BRIDGE CONCEPTS**

3203 W. Waters Ave., Suite A  
Tampa, FL 33614  
(800) 226-4178

A Division of Pelican Marine Enterprises, Inc.

CIRCLE #163

## SAFE GUARD YOUR INVESTMENTS



- Reduce silt buildup on greens
- Reduce clogged irrigation heads & valves
- Reduce damage to pump equipment
- Reduce the need for dredging
- Eliminate clogged pump intakes

**Float-N-Screen®**  
Patent #5052855



Manufactured By:  
Greenscape Pump Services, Inc., 556 Coppell Road, Coppell Texas 75019  
Ph. # (214) 393-0346 Fax # (214) 393-2337

SEE YOU AT THE GCSAA SHOW BOOTH #4214  
CIRCLE #160

## Formost Construction Co.

Serving the nation for over 30 years.



### IRRIGATION SPECIALISTS

"Doing One Thing Well"

P.O. BOX 559  
TEMECULA, CALIFORNIA 92593

(909) 698-7270  
FAX (909) 698-6170

STATE LIC. #267960

CIRCLE #162

## ACCU-GAGE™

NEW!

**LIFETIME WARRANTY**

ON BARS WITH **DURA-COAT™**

ACCU-GAGE is a precision tool for making highly accurate height-of-cut measurements on greens-mowers or other precision mowers. AVAILABLE IN 15", 18", and 24" bars.

Our LIGHTWEIGHT and RIGID aluminum bars are now treated with DURA-COAT. DURA-COAT wears better than tool steel and enables us to offer this unique LIFETIME WARRANTY. In addition, all replacement bars are treated with DURA-COAT, and have a LIFETIME WARRANTY.

To order call 1-800-253-2112 or fax 1-313-429-3985.

**PRECISION TOOL PRODUCTS CO.**  
7836 Bethel Church Rd. • Saline, MI 48176

CIRCLE #164

## CALENDAR

Continued from previous page

29-30 — GCSAA seminar on Environmental Considerations in Golf Course Management in Omaha, Neb. \*

30-Dec. 2 — Southern Turfgrass Ass'n Annual Conference and Show in New Orleans. Contact 901-377-7194.

## December

1-2 — GCSAA seminar on Golf Course Restoration, Renovation and Construction Projects in Fond du Lac, Wis. \*

6-9 — Ohio Turfgrass Conference and Show, in Columbus; For information, call 614-292-2601

13-14 — GCSAA seminar on Environmental Considerations in Golf Course Management in Baltimore. \*

15-16 — GCSAA seminar on Disease Identification and Control in Pleasanton, Calif. \*

## 1994

### January

3-5 — Wisconsin Turfgrass & Green Industry EXPO in Madison. Contact Frank Rossi at 608-262-1490.

5-7 — Second Annual Turfgrass Management/Park Maintenance Training School in Albany, N.Y. Contact 800-873-TURF.

10-13 — 34th Virginia Turf and Landscape Conference and Trade Show in Richmond. Contact Bruce Tharp at 804-340-3473.

31-Feb. 7 — GCSAA Annual Conference and Show in Dallas. Contact 800-472-7878.

\* For more information contact the GCSAA Education Office at 800-472-7878 or 913-841-2240.