

Golf Course Marketplace

To reserve space in this section, call Simone Marsteller at 813-576-7077

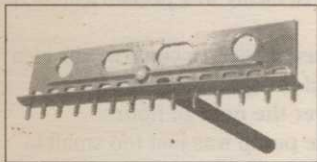
ADVERTISERS INDEX

RS#	Advertiser	Page
145	Ametek	51
133	The Andersons	36
127	Aquatrols	30
150	Aquatrols	62
431	B.H.Sales	33
159	BioTherm Hydronics Inc.	59
174	Bloch & Co.	61
128	Brouwer Turf Equip.	30
106	Ciba-Geigy	4-5
138	Ciba-Geigy	42-43
116	Ciba-Geigy *	18-19
108	Club Car	9
158	Contech Construction Products	59
170	Continental Bridge	60
177	EcoPak	61
130	Emerald Isle, Ltd.	32
178	Environmental Compliance Systems	61
122	Farmer's Marketing	26
151	Furness Golf Construction	62
102	Golf Turf Management	3
143	Grace-Sierra	2
111	Grace-Sierra	14
171	Hometech Indus.	60
114	Huber Ranch Sod Nursery	16
173	Innovative Golf Products	61
143	ISK Biotech	48
119	Jacklin Seed Co.	24
153	Jacobsen	64
169	Jesco Products	60
109	John Deere	10-11
110	Kalo	13
105	Kubota	7
160	Lab Systems/Software	59
104	Lester Electrical of Nebraska	6
137	Lofts, Inc.	39
165	Markers, Inc.	60
167	Master of the Links	60
141	Melex USA	46
175	Mid-American Golf Construction	61
166	Milona Turf Products	60
136	Nicklaus Design	40
132	O.M.Scott	34-35
146	O.M.Scott *	52
142	Par Aide	47
154	Partac	46
164	Pavelec Bros. Construction	59
157	Pelican Marine	59
101	Perfection Sprinkler	3
103	Precision Small Engine	3
161	Precision Tool Prod. Co.	59
163	Precision Tool Prod. Co.	59
162	Quail Valley Turf Farm	59
139	Ransomes America	44
129	Regal Chemical	31
134	Regal Chemical	37
148	Regal Chemical	55
123	RGB Labs	27
118	Rhone-Poulenc	22-23
135	Rhone-Poulenc	38
156	Rise *	18-19
144	Roots, Inc.	50
121	Sandoz	25
124	Sandoz	27
126	Sandoz	29
107	Smithco	8
179	Soil Technologies	61
112	Southern Concrete	16
115	Standard Golf	17
120	Syncroflo	25
176	Syntennico	61
125	Tee-2-Green	28
117	Toro Comm'l. Prod. Div.	20-21
149	Toro Comm'l. Prod. Div.	56-57
147	Turf Merchants	54
155	Uniroyal *	45
180	Unit Structures	61
113	United Soil Blenders	16
168	Williams, Gill & Assoc.	60
152	Yamaha	63
172	Yard Edge	60

* Appear in regional editions.

ORDER TODAY!

TOUR-LEVEL™ SAND RAKES



The ONLY Tour-approved rake with:
 * No-Splinter Oval Handle
 * Flow-Thru Smoothing
 * GE® LEXAN® Head

1-800-467-5514

Innovative Golf Products, 104-5 Griffith Plaza Drive
 Winston-Salem, NC 27103 FAX (919) 765-9955

CIRCLE #173



PIPE LOCATOR THE LOCAT™ INEXPENSIVE

Locates, traces underground pipes, including drain pipes, made of PVC, ABS, steel and cement. Finds sprinklers, valves and clogs.

Used by Hundreds of Golf Courses

Satisfaction Guaranteed

Bloch & Company
 Box 18058, Cleveland, OH 44118
 (216) 371-0979

CIRCLE #174



MID-AMERICAN GOLF CONSTRUCTION, INC.

LARRY A. SMITH
 President

5651 County Road 110
 Fulton, MO 65251

Tel: (314) 642-4857
 Fax: (314) 642-0581

CIRCLE #175

"NOVATEE"

The NOVATEE is a combination of specially manufactured synthetic grass of commercial quality. Its patented design, featuring top dressing imbedded between the fibers, allows golfers to tee up just like on natural grass.



The NOVATEE is the state-of-the-art synthetic tee surface for all courses & driving ranges.

Dealer inquiries requested.

PO/CP 533 CSL
 Montreal, PQ., Can. H4V 2Z1
 514/486-1696
 Fax 514/486-9927

SyntenniCo Inc.

CIRCLE #176

PUT THE BITE ON ALGAE

* SOLVE YOUR PROBLEMS WITH
 ALGAE AND ODORS

(5) REASONS TO USE ECOPAK

1. Predictable Performance
2. Proven Design
3. Cost Effective
4. Easy to Install
5. No Maintenance

CUSTOMER LEASING PLANS AVAILABLE
 Distributor inquiries welcome!



OZONE AERATION SYSTEMS

P.O. Box 1295 Ph. 805-541-2206
 Morro Bay, CA. 93443 Fax. 805-541-2532

CIRCLE #177



Soil Technologies Corp.

R.R. 4 Box 133, Fairfield, IA 52556
 515/472-3963 • Fax 515/472-6189

TurfTech Bio-Pro™

THE FULL SPECTRUM ALTERNATIVE



Turf-Tech Bio-Pro™ supplies all the biological tools necessary for superior turfgrass quality and stress resistance.

Call or write for a fact-filled brochure.

(800) 221-7645

CIRCLE #179

QuickView

Chemical Data Reference Software
 View and Print Chemical Data
 Directly From Your Computer!!

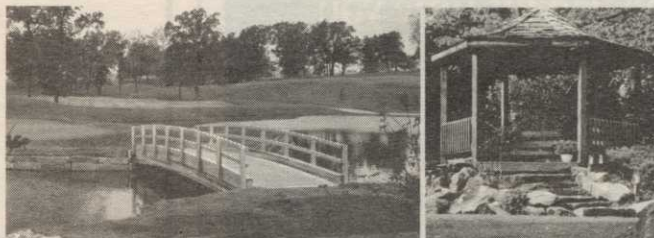
Chemical Data Copyright C&P Press

QuickView Software Program \$125
 T&O MSDS Library \$105
 available soon... T&O Label Library

Special Discount for SCMS Users

Order Now...Call Toll Free (800) 472 8882
 Environmental Compliance Systems, Inc.
 21 North Avenue Lake Forest IL 60045

CIRCLE #178



Laminated Wood Pedestrian & Vehicular BRIDGES & SHELTERS

Order Direct From The Leading Manufacturer in U.S.

- Complete Prefabricated Packages
- Direct Distribution Throughout the U.S.
- Ready for Fast Erection
- Custom Design & Engineering



CALL
 1-800-777-UNIT

Morrisville, NC 27560
 Tel. 919/467-6151
 FAX 919/469-2536

CIRCLE #180

Eagle Glen project

Continued from page 43

only a challenging 18-hole course, but also 28 half-acre residential lots. With the sale of the lots, we were able to raise another half million and do the whole thing."

In the fall of 1989, the Eagle Glen project began. "With an original budget of \$1.2 million for the course and a commitment to build the clubhouse and buy maintenance equipment for \$342,000, we were OK until we had a bad turf-growing season in the fall 1991," emphasized Schofield. "At that time our board, now numbering 10, raised another \$300,000 around the table in stock and lots to keep us going."

"It was the people who kept us going," Schofield said "People in their 80s bought stock and another third invested and were not even golfers. They just wanted to be a part of this community effort."

One of those who exchanged work for equity was Mark Mann. Mann built a portion of the clubhouse for an equity position. Paul Lapham, of Lapham and Associates, donated his professional surveying services to the golf course. Don Ahac is another member who got involved. The course needed a name. He suggested a contest for the community, with the winner receiving a \$50 savings bond. An announcement in the local paper drew more than 100 entries with multiple suggestions. Why Eagle Glen? Across the street from the course is the high school-home of the Farwell Eagles. Why not?