

Super Stewards

Continued from page 53

- Bruce Cadenelli, Caves Valley Golf Club (private/Owings Mills, Md.);
- Tim Long, Barton Creek Resort (resort/Austin, Texas).

In addition, there may be as many as 21 regional winners: one public, private and resort winner each in all seven U.S. Golf Association regions. Eleven regional winners were selected this year:

- Harold Wade, Jr., Cherry Valley Club (private/Northeast region/Garden City, N.Y.);
- Thomas Schlick, Marriott's Golf Club at Wind Watch (resort/Northeast region/Hauppauge, N.Y.);
- Richard Boehm, Wright Patterson AFB Golf Club (private/Mid-Atlantic region/Wright Patterson Air Force Base, Ohio);

Continued on next page

P&N standard?

Continued from page 1

fungicides.

"We've done our homework. What are we afraid of?" asked Fister. "What we do now is very inefficient. We go from one state to the next and each has its own way of doing things. States are asking, 'What are the guidelines?' No one knows, so they make their own."

"We don't think posting is necessary from a health standpoint, but that's not real in today's world. We could spend millions and never win that war. But if we came to everyone with a national standard, people would get on board."

Not everyone in the chemical industry agrees with Fister — not even close. The Professional Lawn Care Association of America is the only green industry association to endorse nationwide P&N standards, including similar measures for homeowners.

In short, many in the chemical industry feel posting and notification delivers the wrong message and fuels the fire of environmental activism.

"Our basic position is, there is no scientific reason for posting and notification," said Allen James, RISE executive director. "The call for it is purely an emotional response. RISE continually evaluates the posting and notification standards across the country to assess whether our position is valid. And we believe it is. There is simply no sound scientific basis for posting and notification standards."

Fred Langley, government relations manager for DowElanco and chairman of the RISE Government Issues Committee, believes it is too late to pursue a national standard.

"The window of opportunity has passed because 23 states have already implemented different versions of one," Langley explained. "Some folks believe that applying a national posting and notification law would provide uniformity, but that would assume that those 23 states would go back to the federal statute. I don't think that would happen."

"Typically, a federal statute provides the floor, the minimum. State can certainly go beyond that minimum, and I expect they would. In essence, a national standard would open the law for additional regulations."

Fister sees industry support for a national standard as more than a regulation issue. It's public relations, he said.

"I really think we have to take a proactive position," said Fister. "It's going to happen anyway. I don't think it will damage the integrity of our industry. It will help it. We may as well guide the market, instead of letting the legislators do it."

Golf Course Marketplace

To reserve space in this section, call Simone Marstiller at 813-576-7077

ADVERTISING INFO.

1993 Advertising Rates

| | 2X | 6X | 12X |
|-------------------|---------|---------|---------|
| Per col. inch: | \$60.00 | \$55.00 | \$40.00 |
| Add-on per 1/4": | \$15.00 | \$13.75 | \$10.00 |
| Logo incl. in ad: | \$30.00 | \$30.00 | \$30.00 |

- Rates are per insertion.
- Minimum 2-time insertion.
- Prepayment is required.

Send prepayment & ad copy to:
GOLF COURSE NEWS
 7901 4th St. N., #311
 St. Petersburg, FL 33702
 813/576-7077, Fax 813/579-9788

EMPLOYMENT

HEAD GREENSKEEPER

Recently built Southwest 18-hole RV resort golf course looking for head greenskeeper. Must have overseeding experience. Bilingual. Able to work & supervise Native American & Hispanic employees. Send resume to: **Ott-Knott, Inc., P.O. Box 327, Fairfield, WA 99012.**

EDUCATION

GRAYSON COLLEGE, Dennison, TX. 2-year technical program in golf course & turf grass management. 18-hole golf course on campus. Dormitories, placement assistance, financial aid & scholarships available. Contact: **GCC, 6101 Grayson Dr., Dennison, TX 75020. (903) 463-8653.**

REAL ESTATE

WANTED: GOLF COURSES

We are always looking for courses to offer our many qualified buyers. If you would like to sell or acquire a course, please call **Richard M. Farrell**, Licenced Real Estate Broker TODAY!

GOLF PROPERTIES REAL ESTATE
 5325 140th Avenue North
 Clearwater, FL 34620
 (800) 447-1044
 Fax (813) 530-7994

GOLF COURSES WANTED

Southwest Golf is interested in purchasing or leasing golf courses.

Call **Dick Campbell** at
 (702) 362-4497

TEXAS GOLF COURSES

9 & 18 holes — Statewide.
 Some with extra land, dev. lots.
 Descriptive list available.

TEXAS GOLF PROPERTIES
 1603 Lightsey — Austin, TX 78704
 512/442-7105 • Fax 512/442-1812

NEW JERSEY GOLF REALTY SPECIALIST

JARED MARCH
 PROPERTIES • INC

(908) 741-4888
 FAX (908) 741-7885
 Confidential real estate services.
 List — Sell — Develop

BUSINESS SERVICES



Mid Tenn Turf, Inc.

Golf course, athletic field renovations & new construction. Sodding, sprigging, row planting, fairway renovations. Complete turn key operations. Products include: Vamont Bermuda; Tif & Tif II Bermudas; Meyer Z-52 Zoysia; Blended Fescue.

Mid Tenn Turf, Inc.
 Rt. 3, Box 3199
 Manchester, TN 37355
 Phone (615) 728-0583

FOR SALE

POND LINERS

Buy direct from fabricator 20 & 30 mil. P.V.C. Made to order. Under 20 cents per sq. ft. Installation or supervision available. Call...

COLORADO LINING COMPANY
 (303) 841-2022

NEW VIDEOS

"Introduction to Golf Course Maintenance" (Spanish or English). It covers green cutting, cup changing, cart maintenance, & sand trap raking. \$39.95 + \$4.00 shipping & handling. Now being shown in 32 states.

"Unwritten Rules of Golf" Designed to speed up play. It covers etiquette & cart usage for beginning golfers. It's for use in golf Pro Shops & Locker Rooms. \$19.95 + \$4.00 shipping & handling.

MACH IV PRODUCTIONS
 P.O. Box 543
 Wauconda, IL 60084

850 ACRES CERTIFIED SOD AND SPRIGS

(Zoysia, TIF Bermudas, Centipede)
 Big Roll Sod, Row Planting, Sprigging, Sodding, Renovations. 18 yrs. experience in golf course work. Many references. 24 hour sod delivery.

DOUBLE SPRINGS GRASS FARM
 1-800-458-4756
 Searcy, Arkansas

**MAY ISSUE CLASSIFIED
 DEADLINE: APRIL 12, 1993
 CALL TO PLACE YOUR AD
 TODAY!**

STEEL BUILDINGS

Save up to 50% on Arch Style Buildings. Factory Clearance. 25x30; 40x40; 50x100 & others. Factory Direct.
UNIVERSAL STEEL
 1-800-548-6871

POND LINER FOR SALE

Brand new, in orig. packaging. Rectangular, 137' x 185'. 25,000 s.f.. 30 mil. plastic. Cost over \$6,000 new; selling for \$3,200. Contact **Mike Scesny, Northeast Turf & Irrigation, (518) 237-7700.**

LASER MEASURING

LASER MEASURING and SPRINKLER YARDAGE MARKERS

We do it all. Laser measure & installation (same day) of **custom metal yardage markers** for all types of sprinkler heads. Warranty included. Also tee to green measurements, granite fairway markers. Sprinkler yardage markers may be purchased separately. Contact Nick for samples & references. **Fairway Designs of Florida, 800-36-TAGIT.**

GOLF COURSE ACCESSORIES

SAVE 40% OR MORE!

Buy personalized flags factory direct & save 40% or more. Flagpoles, tee markers, etc. also available. Fast personalized service guaranteed. Call toll free.

1-800-476-7005.



**FOUR SEASONS
GOLF COMPANY**

P.O. Box 78011
 Greensboro, NC 27427

WHY HASSLE WITH SEVERAL VENDORS?

- Scorecards
- Sprinkler Tagging
- Yardage Books
- Fairway Markers
- Laser Measuring
- Tee Signs (wood or granite)

Call **FORE BETTER GOLF, INC.**
 1-800-468-8672

CUSTOMIZED YARDAGE MARKERS

- ✓ **Highest quality bronze** markers for tees, 100, 150 & 200; & cart paths
 - ✓ Sprinkler head **yardage tags** to fit all automatic systems
 - ✓ **Yardage books** — 1 & 4 color
 - ✓ **Laser measure** per USGA standards
- For more information, references or samples, contact:

From Tee to Green, Inc.
 1707 Brandywine Trail
 Ft. Wayne, IN 46845
 (800) 932-5223

Golf Course Marketplace

To reserve space in this section, call Simone Marsteller at 813-576-7077

BRIDGES AND WALLS



- On-Site Construction • Consulting and Design Capabilities
- Certified Engineered Drawings Available



3203 W. Waters Ave., Suite A
Tampa, FL 33614
(800) 226-4178

CIRCLE #157

TerraBond Geotextiles TerraFlow Drainage Systems

Modern Turf Management

TerraBond geotextile fabric permanently separates soils, sand, and stone. Promotes drainage. Ideal as bunker liner and for putting green construction.

TerraFlow replaces perforated pipes and gravel drains. Up to 75% less trenching without heavy equipment. Fast, inexpensive installation. Less turf disruption.

Free information pack available. Call toll-free: 1-800-338-1122 (in Ohio: 1-800-752-8899). CONTECH CONSTRUCTION PRODUCTS INC. - Innovative Products for over 75 Years.

CIRCLE #158

PROBLEM:

"Because of the shade trees, I'm spending too much time feeding & reseeding my greens."

SOLUTION:

No, don't cut down the trees. TurfTemp will furnish balanced warmth to the roots of your green even better than the sun. With warmer roots, you'll have hardier and healthier turfgrass requiring less maintenance.

TURFTEMP
HEATING/COOLING SYSTEMS

BioTherm 1-800-GET-HEAT Fax:707-762-9628 Ph:707-762-8425

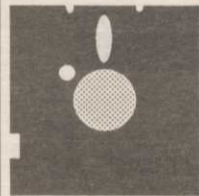
CIRCLE #159

TRIMS
Grounds Management Software

Dedicated to Technology in
Turfgrass Management

Experience what TRIMS can do for you!

- Budget & Expenses
- Equipment Service Records
- Spare Parts Inventory
- Personnel & Labor Records
- Chemical Application Logs and more!



Call or write today to receive free literature and a demo disk (3 1/2, 5 1/4).

LABB Systems/Software
6018 East Osborn Road
Scottsdale, AZ 85251
(800)733-9710

CIRCLE #160

ACCU-GAGE™

NEW!
LIFETIME WARRANTY
ON BARS WITH
DURA-COAT™

ACCU-GAGE is a precision tool for making highly accurate height-of-cut measurements on greens-mowers or other precision mowers. AVAILABLE IN 15", 18", and 24" bars.

Our LIGHTWEIGHT and RIGID aluminum bars are now treated with DURA-COAT. DURA-COAT wears better than tool steel and enables us to offer this unique LIFETIME WARRANTY. In addition, all replacement bars are treated with DURA-COAT, and have a LIFETIME WARRANTY.

To order call 1-800-253-2112 or fax 1-313-429-3985.

PRECISION TOOL PRODUCTS CO.
7836 Bethel Church Rd. • Saline, MI 48176

CIRCLE #161

QUAIL VALLEY FARM, INC.
"Growers of Quality Turf Grasses"

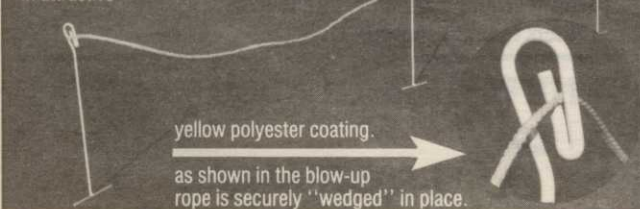
- Meyer Z-52 Zoysia
- El Toro Zoysia
- Tall Fescue
- Sprigs
- Tifway II
- Tifdwarf
- Tifgreen II
- Big Rolls

(800) 666-0007
7501 Kanis Road
Little Rock, AR 72204
(501) 224-8873

CIRCLE #162

NEW ROPE-LOC™

Finally, a rope and stake system that works! Simple but unique, the ROPE-LOC system eliminates annoying or unsightly rope failures. Simple, clean, durable — ROPE-LOC stakes are made of 3/8" steel and finished in attractive



Call for a special introductory offer.

1-313-429-9571, 1-800-253-2112 or FAX: 313-429-3985

PRECISION TOOL PRODUCTS CO. • 7836 Bethel Church Rd. • Saline, MI 48176

CIRCLE #163



**PAVELEC BROTHERS
GOLF COURSE CONSTRUCTION CO., INC.**

- ✓ New Construction
- ✓ Renovation
- ✓ Field Drainage Systems

TONY PAVELEC
(201) 667-1643
EMIL PAVELEC
(201) 939-6182

98 Evergreen Ave.
Nutley, NJ 07110

CIRCLE #164

Super Stewards

Continued from previous Page

- Charles V. Benton, PhD and Gary Grigg, CGCS Naples National Golf Club (private/Florida region/Naples, Fla.);
- Paul Hickman, CGCS, Grenelefe Golf & Tennis Resort (resort/Florida region/Grenelefe, Fla.);
- Tony Rzadzki, Cantigny Golf Club (public/Great Lakes region/Wheaton, Ill.);
- Bruce Wolfrom, CGCS, Treetops/Sylvan Resort (resort/Great Lakes region/Gaylord/Mich.);
- John Miller, Jr., Hindman Park Golf Course (public/Mid-Continent region/Little Rock, Ark.);
- Philip George, CGCS, Prairie Dunes Country Club (private/Mid-Continent region/Hutchinson, Kan.);
- Thomas Janning, Rosewood Lakes Golf Course (public/West region/Reno, Nev.);
- James Ferrin, CGCS, Brookside Country Club (private/West region/Stockton, Calif.).

Donations are made by Ciba-Geigy and Rain Bird to GCSAA S&R in the names of each national and regional winner: \$500 for national and \$50 for regional.

Kroeger comment

Continued from page 13

increase the maintenance staff (with attendant increasing costs) or accept lower standards of playability and risk loss of income.

IRRIGATION

The demand for water is directly influenced by soil texture, soil salinity, monthly rainfall, irrigation water quality, the total irrigated turf and landscaped area, air temperature, relative humidity and grass species. The architect of the course must competently consider all of the above factors, as well as the source and availability of water at all times of the year, when designing the total watered area.

The engineering involved in designing an irrigation system includes every square meter of irrigated area on the property. It starts at the water source and does not end until the water leaving the sprinklers lands on the ground, uniformly distributed so as to eliminate wet and dry areas. The quality of the installed system is often gauged by its ability to:

- Operate efficiently using locally available skill levels of labor and supervision
- Evenly distribute water over the wide range of golf course conditions
- Accept additional sprinklers in the future
- Allow individual control for sprinklers in a specialized situation
- Operate over a given season with few repairs or maintenance costs

State-of-the-art irrigation equipment which is appropriate for the specific region may appear expensive, but it has the ability to repay the additional costs from savings generated. One such component is the fertilizer injector, which is used to inject liquid nutrients into the pipeline at the pumping station, eliminating the need for frequent trips across the course with tractors and spreaders. At US \$10,000-20,000, they pay for themselves within a few years through labor savings, reduction of equipment-related damage and the shorter time period from seeding/stolonizing to opening of the course.

Typically, dollar driven reductions in the irrigation, drainage and soil systems erode future operational profits. The new golf course entrepreneur in the process of a pre-construction cost control review would do well to utilize the experience of the architect's staff agronomist, or an experienced golf course superintendent, before finalizing the construction budget.

March

- 4 — GCSAA spray technician training program in Aurora, Ill.*
- 4-5 — USGA Golf Course Wastewater Symposium in Newport Beach, Calif. Contact Dr. Michael Kenna at 405-743-3900.
- 7-10 — Crittenden Golf Development Expo in Palm Springs, Calif. Contact 800-366-2406.
- 9 — GCSAA seminar on Computers in Turf Management in Indianapolis.*
- 9 — Irrigation Specialist Training Seminar in Jamesburg, N.J.*
- 9 — USGA Conference in Columbia, S.C. Contact 404-951-0766.
- 10 — GCSAA spray technician training program in Helena, Mont.*
- 12-14 — Orlando Golf Show in Orlando, Fla. Contact 800-842-8832.
- 14-16 — Prairie Turfgrass Conference & Trade Show in Saskatoon, Saskatchewan. Contact Joe Bloski at 306-931-1982.
- 15-16 — GCSAA seminar on Golf Course Design Principles in Minneapolis.*
- 15-17 — 3rd Annual New England Landscape Exposition in Manchester, N.H. Contact 800-639-5601.
- 15-21 — Pacific Rim Golf Course Conference and Show in Singapore. Contact 913-841-2240.
- 17-18 — Reinders 11th Turf Conference in Waukesha, Wis. Contact Ed Devinger at 414-786-3301.
- 21-24 — Forecast Golf Marketing golf range seminar at Kiawah Island, S.C. Contact Scott Marlowe at 804-379-5760.
- 22 — Ga. GCSA Spray Technician Seminar in Albany. Contact Karen White at 706-769-4076.
- 23-24 — GCSAA seminar on Golf Course Construction Techniques and Management in Palm Springs, Calif.*
- 25-27 — The Carolinas Irrigation Ass'n Trade Show and Seminar in Myrtle Beach, S.C. Contact 800-682-7774.
- 28 — Golf Asia '93 International Golf Exhibition & Conference in Singapore. Contact 65-2966961.
- 30 — Irrigation Specialist Training Seminar in La Quinta, Calif.*
- 31 — Irrigation Specialist Training Seminar in Phoenix.*
- 31-Apr. 2 — Crittenden's Meet the Lenders conference in Washington, D.C. Contact 800-421-3483.

April

- 1-2 — Crittenden's Meet the Lenders Conference in Washington, D.C. Contact 800-421-3483.
- 12-13 — Southeastern Turf Conference in Tifton, Ga. Contact Karen White at 706-769-4076.

May

- 12 — North Carolina Turf & Landscape Field Day at North Carolina State University in Raleigh.

July

- 8 — Univ. of Ga. Turfgrass Field Day in Griffin, Ga. Contact 404-975-4123.
- 14-16 — American Sod Producers Ass'n Summer Convention & Field Day in Nashville. Contact 703-836-4606.
- 18-24 — International Turfgrass Society's 7th International Turfgrass Research Conference in Palm Beach, Fla. Contact George Snyder at 407-996-3062.

* — For more information or to register, contact the Golf Course Superintendents Association of America education office at 800-472-7878 or 913-841-2240.

Golf Course Marketplace

To reserve space in this section, call Simone Marsteller at 813-576-7077

MARKERS, INC.

*Tried-N-True
Modular Golf Course
Marking System*

Shop around, but look to
MARKERS for
High Quality + Low Price =
EXCEPTIONAL VALUE!
1-800-969-5920

33597 Pin Oak Parkway, Avon Lake, OH 44012
Phone (216) 933-5927 FAX (216) 933-7839

CIRCLE #165



Sod Stripper™

cuts a strip of sod for your small turf repairs.

Call for Brochure
800-456-4351

Miltona

TURF PRODUCTS P. O. Box 164-M • Miltona, MN 56354

CIRCLE #166

**Keep Your Divot Seed Mixture
Where It Is Used ...**



... in Divot Seed & Soil tee buckets next to the tee markers. Available in Cedar or Redwood slats and with companion Trash'M debris buckets.




**Ask Your Golf Course Distributor for
INNOVATIVE MAINTENANCE PRODUCTS**

From *Master of the Links*

P.O. Box 283, Lockport, IL 60441-0283
(815) 723-4444 • Fax (815) 723-4485

CIRCLE #167

Williams Gill



& Associates

*Call or write for a complimentary Master Planning brochure

George Williams
4400 Buffalo Gap Rd. #4500
Abilene, TX 79606
(915) 695-0220
Fax: (915) 691-0392

Garrett Gill
421 North Main Street
River Falls, WI 54022
(715) 425-9511
Fax: (715) 425-2962

Golf Course Architects

CIRCLE #168

Keep That Edge



reel sharpening compound

Contact Your Local Distributor or Call Us
Toll Free 1 (800) 422-4748

CIRCLE #169



Nationwide delivery • Install in less than two hours

Golf Course Bridges!

1-800-328-2047

CONTINENTAL
BRIDGE

Route 5, Box 178, Alexandria, MN 56308 • (612) 852-7500

Thousands in use. Built to last.
Sponsor Member



NATIONAL GOLF FOUNDATION B-DA-CL

CIRCLE #170



Fleet Car Storage

LOW PROFILE • DRIVE THROUGH DESIGN
MODULAR, FREESTANDING, EXPANDABLE, & FAST. CALL FOR IMMEDIATE QUOTE

1-800-289-8827

100 WEST ASHE STREET, JOHNSON CITY, TENNESSEE 37601 (615) 926-1470

CIRCLE #171

ENGRAVED
YARDAGE
LABELS

165

• Bright colors • Fasteners included
• Orders quickly shipped UPS

Free Samples!

NEW ITEM... LABEL MOUNTS
For tee boxes & areas without sprinklers



1-800-284-YARD



THE YARD EDGE GOLF CO.

P.O. Box 13159

Wichita, KS 67213

CIRCLE #172

Golf Course Marketplace

To reserve space in this section, call Simone Marsteller at 813-576-7077

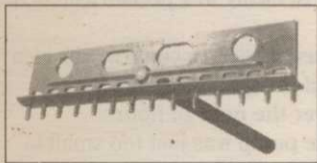
ADVERTISERS INDEX

| RS# | Advertiser | Page |
|-----|----------------------------------|-------|
| 145 | Ametek | 51 |
| 133 | The Andersons | 36 |
| 127 | Aquatrols | 30 |
| 150 | Aquatrols | 62 |
| 431 | B.H.Sales | 33 |
| 159 | BioTherm Hydronics Inc. | 59 |
| 174 | Bloch & Co. | 61 |
| 128 | Brouwer Turf Equip. | 30 |
| 106 | Ciba-Geigy | 4-5 |
| 138 | Ciba-Geigy | 42-43 |
| 116 | Ciba-Geigy * | 18-19 |
| 108 | Club Car | 9 |
| 158 | Contech Construction Products | 59 |
| 170 | Continental Bridge | 60 |
| 177 | EcoPak | 61 |
| 130 | Emerald Isle, Ltd. | 32 |
| 178 | Environmental Compliance Systems | 61 |
| 122 | Farmer's Marketing | 26 |
| 151 | Furness Golf Construction | 62 |
| 102 | Golf Turf Management | 3 |
| 143 | Grace-Sierra | 2 |
| 111 | Grace-Sierra | 14 |
| 171 | Hometech Indus. | 60 |
| 114 | Huber Ranch Sod Nursery | 16 |
| 173 | Innovative Golf Products | 61 |
| 143 | ISK Biotech | 48 |
| 119 | Jacklin Seed Co. | 24 |
| 153 | Jacobsen | 64 |
| 169 | Jesco Products | 60 |
| 109 | John Deere | 10-11 |
| 110 | Kalo | 13 |
| 105 | Kubota | 7 |
| 160 | Lab Systems/Software | 59 |
| 104 | Lester Electrical of Nebraska | 6 |
| 137 | Lofts, Inc. | 39 |
| 165 | Markers, Inc. | 60 |
| 167 | Master of the Links | 60 |
| 141 | Melex USA | 46 |
| 175 | Mid-American Golf Construction | 61 |
| 166 | Milona Turf Products | 60 |
| 136 | Nicklaus Design | 40 |
| 132 | O.M.Scott | 34-35 |
| 146 | O.M.Scott * | 52 |
| 142 | Par Aide | 47 |
| 154 | Partac | 46 |
| 164 | Pavelec Bros. Construction | 59 |
| 157 | Pelican Marine | 59 |
| 101 | Perfection Sprinkler | 3 |
| 103 | Precision Small Engine | 3 |
| 161 | Precision Tool Prod. Co. | 59 |
| 163 | Precision Tool Prod. Co. | 59 |
| 162 | Quail Valley Turf Farm | 59 |
| 139 | Ransomes America | 44 |
| 129 | Regal Chemical | 31 |
| 134 | Regal Chemical | 37 |
| 148 | Regal Chemical | 55 |
| 123 | RGB Labs | 27 |
| 118 | Rhone-Poulenc | 22-23 |
| 135 | Rhone-Poulenc | 38 |
| 156 | Rise * | 18-19 |
| 144 | Roots, Inc. | 50 |
| 121 | Sandoz | 25 |
| 124 | Sandoz | 27 |
| 126 | Sandoz | 29 |
| 107 | Smithco | 8 |
| 179 | Soil Technologies | 61 |
| 112 | Southern Concrete | 16 |
| 115 | Standard Golf | 17 |
| 120 | Syncroflo | 25 |
| 176 | Syntennico | 61 |
| 125 | Tee-2-Green | 28 |
| 117 | Toro Comm'l. Prod. Div. | 20-21 |
| 149 | Toro Comm'l. Prod. Div. | 56-57 |
| 147 | Turf Merchants | 54 |
| 155 | Uniroyal * | 45 |
| 180 | Unit Structures | 61 |
| 113 | United Soil Blenders | 16 |
| 168 | Williams, Gill & Assoc. | 60 |
| 152 | Yamaha | 63 |
| 172 | Yard Edge | 60 |

* Appear in regional editions.

ORDER TODAY!

TOUR-LEVEL™ SAND RAKES



The ONLY Tour-approved rake with:

- * No-Splinter Oval Handle
- * Flow-Thru Smoothing
- * GE® LEXAN® Head

1-800-467-5514

Innovative Golf Products, 104-5 Griffith Plaza Drive
Winston-Salem, NC 27103 FAX (919) 765-9955

CIRCLE #173



PIPE LOCATOR THE LOCAT™ INEXPENSIVE

Locates, traces underground pipes, including drain pipes, made of PVC, ABS, steel and cement. Finds sprinklers, valves and clogs.

Used by Hundreds of Golf Courses

Satisfaction Guaranteed

Bloch & Company
Box 18058, Cleveland, OH 44118
(216) 371-0979

CIRCLE #174



MID-AMERICAN GOLF CONSTRUCTION, INC.

LARRY A. SMITH
President

5651 County Road 110
Fulton, MO 65251

Tel: (314) 642-4857
Fax: (314) 642-0581

CIRCLE #175

"NOVATEE"

The NOVATEE is a combination of specially manufactured synthetic grass of commercial quality. Its patented design, featuring top dressing imbedded between the fibers, allows golfers to tee up just like on natural grass.



The NOVATEE is the state-of-the-art synthetic tee surface for all courses & driving ranges.

Dealer inquiries requested.

PO/CP 533 CSL
Montreal, PQ., Can. H4V 2Z1
514/486-1696
Fax 514/486-9927

SyntenniCo Inc.

CIRCLE #176

PUT THE BITE ON ALGAE

* SOLVE YOUR PROBLEMS WITH
ALGAE AND ODORS

(5) REASONS TO USE ECOPAK

1. Predictable Performance
2. Proven Design
3. Cost Effective
4. Easy to Install
5. No Maintenance

CUSTOMER LEASING PLANS AVAILABLE
Distributor inquires welcome!



OZONE AERATION SYSTEMS

P.O. Box 1295 Ph. 805-541-2206
Morro Bay, CA. 93443 Fax. 805-541-2532

CIRCLE #177



Soil Technologies Corp.

R.R. 4 Box 133, Fairfield, IA 52556
515/472-3963 • Fax 515/472-6189

TurfTech Bio-Pro™

THE FULL SPECTRUM ALTERNATIVE



Turf-Tech Bio-Pro™ supplies all the biological tools necessary for superior turfgrass quality and stress resistance.

Call or write for a fact-filled brochure.

(800) 221-7645

CIRCLE #179

QuickView

Chemical Data Reference Software
View and Print Chemical Data
Directly From Your Computer!!

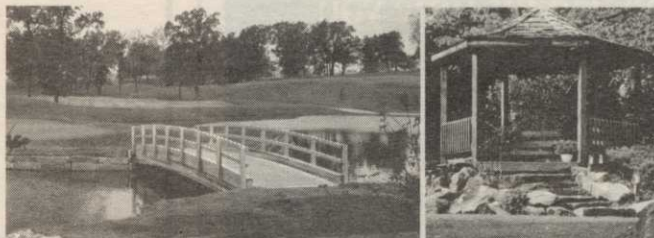
Chemical Data Copyright C&P Press

QuickView Software Program \$125
T&O MSDS Library \$105
available soon... T&O Label Library

Special Discount for SCMS Users

Order Now...Call Toll Free (800) 472 8882
Environmental Compliance Systems, Inc.
21 North Avenue Lake Forest IL 60045

CIRCLE #178



Laminated Wood Pedestrian & Vehicular BRIDGES & SHELTERS

Order Direct From The Leading Manufacturer in U.S.

- Complete Prefabricated Packages
- Direct Distribution Throughout the U.S.
- Ready for Fast Erection
- Custom Design & Engineering



CALL
1-800-777-UNIT

Morrisville, NC 27560
Tel. 919/467-6151
FAX 919/469-2536

CIRCLE #180

Eagle Glen project

Continued from page 43

only a challenging 18-hole course, but also 28 half-acre residential lots. With the sale of the lots, we were able to raise another half million and do the whole thing."

In the fall of 1989, the Eagle Glen project began. "With an original budget of \$1.2 million for the course and a commitment to build the clubhouse and buy maintenance equipment for \$342,000, we were OK until we had a bad turf-growing season in the fall 1991," emphasized Schofield. "At that time our board, now numbering 10, raised another \$300,000 around the table in stock and lots to keep us going."

"It was the people who kept us going," Schofield said "People in their 80s bought stock and another third invested and were not even golfers. They just wanted to be a part of this community effort."

One of those who exchanged work for equity was Mark Mann. Mann built a portion of the clubhouse for an equity position. Paul Lapham, of Lapham and Associates, donated his professional surveying services to the golf course. Don Ahac is another member who got involved. The course needed a name. He suggested a contest for the community, with the winner receiving a \$50 savings bond. An announcement in the local paper drew more than 100 entries with multiple suggestions. Why Eagle Glen? Across the street from the course is the high school-home of the Farwell Eagles. Why not?