

Mont. layout nearing completion

BILLINGS, Mont. — The Huppert Brothers Construction Company will complete the front nine of the new Peter Yegen Jr. Public Golf Course sometime this month. The \$2 million Yegen course is the seventh new course the Huppert Brothers have built since 1981.

Montana has only two companies that specialize in golf course work—Huppert Brothers and Tom Roe & Sons Construction of Big Timber. Both

family-owned companies have built courses throughout the Rocky Mountain region.

Huppert Brothers is a true family business. Besides the two brothers and their father, Kevin's wife, Patty, works on the construction site. Fred's wife, Darcie, does the company books.

"This is a good business to be in during the 90s," Kevin told the *Billings Gazette*, referring to the company's prospects for future projects.

Former Vt. farm to become course

HINESBURG, Vt. — Raymond Ayer and sons, Tom and Tim, will trade in their 250 cows and farm equipment for golf balls and tees within the next year.

The three will be business partners operating Cedar Knoll Country Club, an 18-hole golf course and driving range located here.

The golf course will be located south of Hinesburg Village on Vermont 116 and is expected to open next spring.

The Ayer family got the idea three years ago when Tim Ayer

was hitting golf balls around the back yard.

Ruth Ayer, an avid golfer herself, mentioned the area would make a nice course.

The idea stuck, and 278 acres of the 350-acre farm is in the process of being turned from hay and grazing fields to fairways and greens.

"Farming is a tough business nowadays," Raymond Ayer told the *Burlington Free Press*. "I couldn't think of a better way to keep the land open than a golf course."

GCSAA home city still seeks public course

LAWRENCE, Kan. — A developer's plans to build an 18-hole golf course still face bureaucratic traps.

Questions of financing and gaining water rights have slowed the process of constructing a golf course. Stan Harris, president of the 625-member Lawrence Municipal Golf Course Committee, said green fees can pay for the municipal course. Others like Lawrence Mayor Bob Schulte are not so sure. He claimed the city would have to float bonds to pay for the course.

Schulte believes the new course would alleviate the heavy demand of golfers wanting to play in the area.

The Lawrence area has 8,000 golfers, many of whom have to leave town for Topeka or Kansas City, Kan., to play golf, a city consultant said.

New cutting units have them smiling in Myrtle Beach

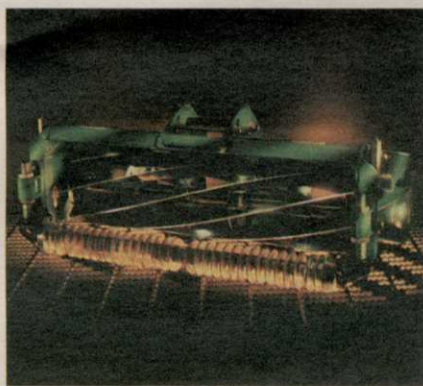
Anyone in search of great public golf courses need only travel to Myrtle Beach, South Carolina. Once there, simply visit one of the facilities owned and operated by Larry and Danny Young.

"Our philosophy is to give the public golfer a country club atmosphere," says Danny Young.

With courses designed by Dan Maples, P.B. Dye, and Tom Doak in their offerings, the Youngs have placed

three of their facilities on *Golf Digest's* prestigious list of the 50 best public courses in America.

"Top-quality maintenance is a high priority for us," says Young. "We have a fleet of John Deere equipment, including an 1800 Sprayer, 1200 Bunker Rake, F1145 Front Mower, 955 Tractor, 2355 Tractor, and a 3325 Turf Mower with



Danny Young (left) has found that John Deere ESP cutting units do indeed deliver "Extra Strength and Precision." They stay in adjustment, hold an edge, and deliver a precision cut day after day.

the new John Deere ESP cutting units.

"The new ESP cutting units are a huge improvement. We used to feel lucky if we got 9 holes done with the old cutting units before they needed adjustment—now we just check them every 3-4 days. And we don't need to sharpen them as often. In fact, we just got a second mower because of how impressed we were with these new ESP models."

For the name of your nearest distributor, or free literature, call 1-800-544-2122. Or write, John Deere, Dept. 956, Moline, IL 61265. Like Danny Young, we know you're going to like what you see.



NOTHING RUNS
LIKE A DEERE®

CIRCLE #106

Officials approve N.J. 18-hole plan

MANCHESTER, N.J. — An 18-hole public golf course has won preliminary site approval from the Planning Board here.

But the board balked at an accompanying 5,500-housing-unit proposal, labeling it too dense for the area.

Kenneth Mizerny, a Philadelphia developer, has proposed building 5,500 homes, a corporate office center and an 18-hole public golf course on a nearly 4,000-acre section of the Heritage Minerals tract.

Planning Board Chairman Donald Czekanski said some board members and state agencies have indicated the land should have no more than 840 homes.

At a recent meeting, Joel Gove, a wetlands ecologist, verified uplands and wetlands in the tract and estimated 75 percent of the 4,000 acres is usable.

Rainville project to open in Calif.

ESCONDIDO, Calif. — After seeing one of his golf courses, Eagle Crest Country Club completed (GCN June, page 1), architect David Rainville expects another project — the Escondido municipal course — to open late this fall.

"It's quite a bit different [from Eagle Crest] because it's much more forgiving," Rainville told the *Times Advocate*.

"I think it's going to surprise a lot of people."