

It's

What's Below The Surface That Counts!



High Density Polyethylene Float:

Filled with US Coast Guard approved closed cell foam. Always floats level, stays afloat even if punctured or damaged. S/S fasteners provide longer life.

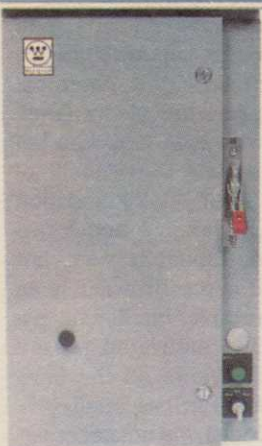
4 Pole/High Torque Motor:

Designed specifically for aeration. Runs longer and cooler at 1725 RPM. Easy to maintain. Rebuildable, not disposable.

Lubricating Oil:

Developed by a major oil company for lubricating and very low dielectric capabilities. Acts as heat transfer.

Power Control Center:

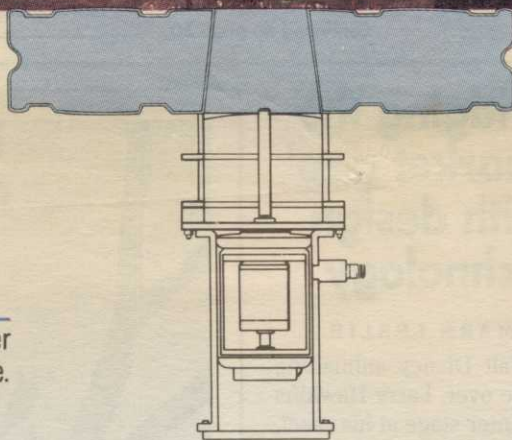


Exclusive Westinghouse motor controls provide maximum built-in protection. UL, CSA and ETL approved. Standard equipment, not an option.



Safety Tested:

All Otterbine aerators are safety tested and approved by ETL.



High Volume, Low Pressure Impeller:

Designed to aerate and move large volumes of water. Precision pitched Stainless Steel affords increased efficiency.

Plug-Type Underwater Connector:

Designed for Otterbine. Easy connect and disconnect makes installation and service simple.

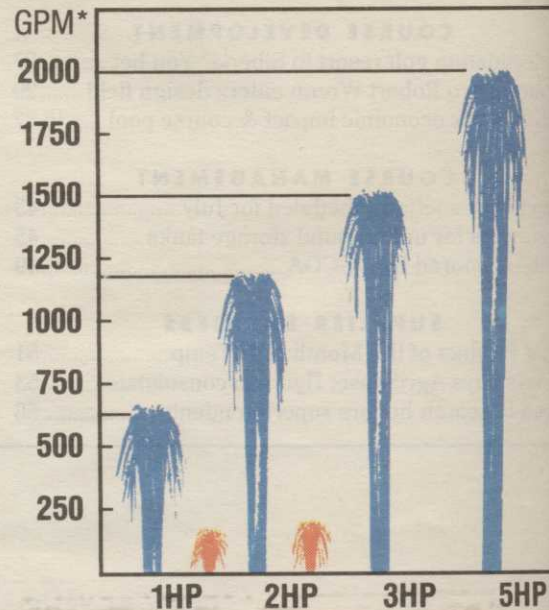
Strong Distributor and Service Network:

Over 130 distributors nationwide with 35 service centers staffed by factory trained personnel.



Otterbine®

We are the competition.



*Gallons Per Minute Pumped

BAREBO, INC.

CIRCLE #101

P.O. Box 217, R.D. 2 • Emmaus, PA 18049 • Phone (215) 965-6018 • Fax (215) 965-6050

Toro® Approves Hydro-Wet® for HydroJect®

Superintendents have several new options for applying wetting agents to their turf, including systems using direct soil injection.

Last year, Toro advanced the direct soil injection method with the introduction of a new water injection aerator, the HydroJect 3000. Recently, Toro approved the use of Hydro-Wet, a wetting agent manufactured by Kalo, Inc., with its HydroJect 3000.

"The results (of wetting agents) are enhanced when



Dosmatic® Plus injection systems include a mobile option, mounted on its own cart.

the wetting agent is applied after a water aeration treatment," notes Ben Street, a market manager for The Toro Company's Commercial Products Division.

Direct soil injection of wetting agents has taken another step forward with the introduction of the Dosmatic Plus,

a convenient alternative to portable tank sprayers. As a mobile accessory, Dosmatic's water-powered liquid injector, applies Hydro-Wet through the HydroJect 3000 in proportional amounts to the water flow.

For more information on direct soil injection of wetting agents, circle the number below, or call Kalo, Inc., toll-free: 1-800-255-5196.



Toro HydroJect 3000 water injection aerator.

CIRCLE #157

Superintendents Use Wetting Agents to Battle Dry Spots.

Golf's rapid increase in popularity has created added pressures on superintendents to maintain the lush, green look golfers have come to expect.

Superintendents have to achieve this look while also coping with increased traffic, changing attitudes toward the use of pesticides and, often, restrictions on water use.

One especially difficult condition they face is localized dry spot, which normally occurs in mid-summer, at the height of the golf season.

"Because most greens have high sand content, keeping moisture in the root zone during the summer can be a challenge regardless of moisture availability," notes Chuck Champion of Kalo, Inc., which manufactures Hydro-Wet®, a wetting agent.

Hydro-Wet has continued to top university tests where residual value among wetting agents has been compared. In tests at Michigan State University, for example, Hydro-Wet delivered 53% more moisture to the root zone and exhibited 23% greater staying power than the closest competitive brand.

In another field test conducted by Michigan State University, Hydro-Wet injected directly into the sub-surface area with the new Toro HydroJect aerator effectively relieved heat stress on greens. The study also found Hydro-Wet to be the most effective wetting agent over a longer period of time.

For a copy of these Michigan State University studies, circle the reader service number below or call Kalo, Inc., toll-free: 1-800-255-5196.

The Hydro-Wet® Story Still Holds Water After 20 Years.

RESIDUAL EFFECTS OF TURF WETTING AGENTS
TESTS CONDUCTED BY MICHIGAN STATE UNIVERSITY

Wetting Agent	% Soil Moisture 14 months after application	Turfgrass Quality (1 = best)
None	5.4%	4.2
AquaGro®	6.7%	3.4
Hydro-Wet®	8.3%	2.1

Refer: Michigan Turfgrass Proceedings, Vol. 4, Jan. 1975
Boyme Highlands Golf Course
Applied July 1973, Evaluated September 1974

**STAYS LONGER!
GREAT FOR EARLY
APPLICATION**

No other wetting agent can match the staying power of Hydro-Wet. So no wetting agent does as much to increase water efficiency.


This staying power is shown in this test. Fourteen months after application, turf treated with Hydro-Wet delivered 53% more moisture to the root zone. What's more, Hydro-Wet had 23% greater staying power than AquaGro.

And the quality of the Hydro-Wet treated turfgrass was significantly better. Hydro-Wet rapidly moves water into the soil where it belongs. Hydro-Wet ensures uniform infiltration and reduces runoff and evaporation. Hydro-Wet boosts soil moisture, which is so important to turfgrass during periods of moisture stress.

Best of all, the same Hydro-Wet formulation has been successful in university trials and on America's golf courses for 20 years.

For the number of your nearest distributor, call, toll free: 1-800-255-5196.

Hydro-Wet
Keeps Water In Its Place

 **KALO** Kalo, Inc. 4550 W. 109th Street Overland Park, KS 66211

AquaGro is a registered trademark of AQUATROLS Corporation of America, Inc.

CIRCLE #156

CIRCLE #158

90 DAYS SAME AS CASH
PLUS
 About
 See Your Dealer For Details

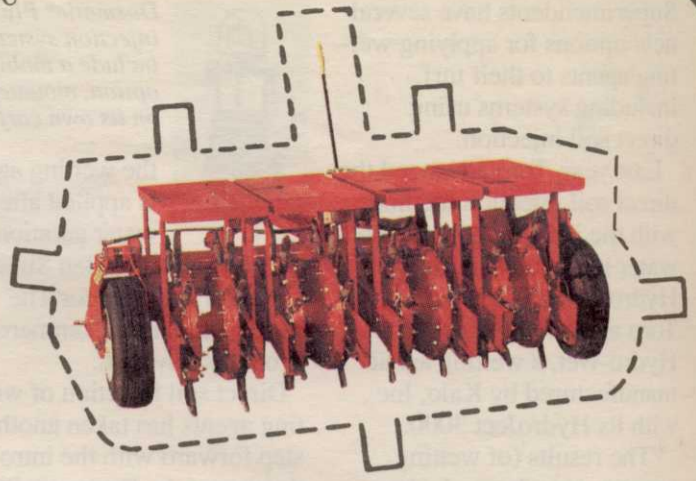
Jacobsen's masterpiece of versatility.

The 2000 Series Utility Trucks are tough, dependable vehicles in your choice of gas or diesel models. A wide selection of available attachments allows you to perform virtually all your turf maintenance chores with a single vehicle.



Dress for success.

For consistent, even top dressing of greens and tees, our unit features quiet, smooth operating hydraulic drive. The 31.5" swath and an 11.5 ft³ capacity let you cover a lot of ground between refills.



Keep plugging away . . .

with our pull-behind, 48" aerator or mounted, three-drum, 42" unit, to revitalize turf quickly and easily.

Spread your wings and fly . . . with our high-capacity sprayer. A variety of boom sizes and accessories are available, so you can spray tees, fairways and other large turf areas with maximum efficiency.



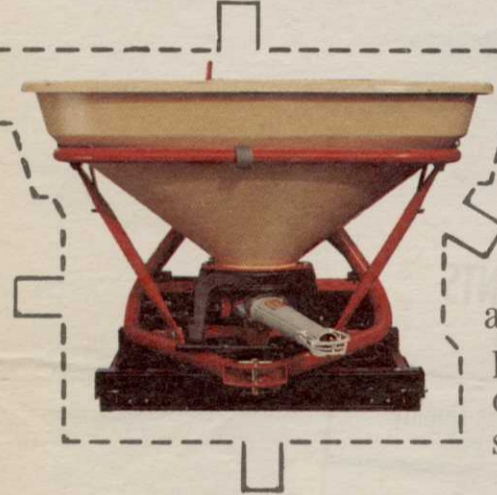
There's also Express delivery.

Select our 810 Express™ for half ton, 12.2 ft³ capacity in a quiet, reliable utility truck. Unit features heavy-duty suspension and rugged, solid steel body for longer life.

To take a closer look at the 810 Express, or our larger capacity quick-change artists, ask your Jacobsen dealer for a complete demonstration.

Growth opportunities.

For even greater versatility, add our universal mounting kit which enables quick change-out of many leading manufacturers' attachments, like this precision broadcast, high-volume spreader.



Put it there . . .

quickly and effortlessly with our 16.6 ft³ dump box. It comes complete with cargo tie-down, double-hinged tailgate and heavy-duty hydraulic lift—standard on our diesel truck.



THE PROFESSIONAL'S CHOICE ON TURF.

**JACOBSEN
 TEXTRON**

Jacobsen Division of Textron, Inc.

CIRCLE #155



QUICK-CHANGE ARTIST.