

Toyama's course gains approval

VENTURA, Calif. — Japanese media tycoon Kagehisa Toyama's dream of building a private golfing retreat in the Ojai Valley appears to be coming true.

The Ventura County Environmental Report Review Committee has voted 5-2 to certify the project's environmental study as complete, conditionally clearing the way for Toyama, who owns Radio Nippon and a Japanese publishing empire. Former U.S. Budget Director Maurice Stans and former U.S. Vatican Ambassador William Wilson are among offic-

ers in the proposed club.

Toyama's Fairmont Corp. has agreed to so many environmental restrictions, each club member may pay as much as \$7,000 per hole to finance them, said Stan Eisner, a member of the county staff committee. Fairmont attorney Lindsay Nielson said play will be restricted to 35 rounds a day—that comes to about \$125,000 per round, Eisner noted.

Toyama has retained the services of Pete Dye to work the 2,000-acre site near Rancho Matilija.

New book covers golf course appraisal

CHICAGO — The Appraisal Institute's newest book and videotape details special considerations involved in appraising golf courses.

The book, "Golf Courses and Country Clubs: A Guide to Appraisal, Market Analysis, Development, and Financing," provides an in-depth examination of private, daily fee and municipal golf courses, as well as facilities in residential real estate developments and resorts.

Data on golfer characteristics, a practical approach for determining the financial feasibility of golf courses, and the services and profit centers essential to golf facilities are discussed.

The results of a survey of lenders detailing

problems in obtaining financing for new golf projects also is included.

The videotape, "The Appraisal of Golf Courses and Country Clubs," examines factors that influence value. It focuses on aspects of golf course construction, including layout development of new courses and costs involved in constructing a golf club complex.

To order these products send request to Appraisal Institute, P.O. Box 10956, Chicago, Ill. 60610-0956.

The National Golf Foundation contributed significantly to the book and videotape. Copies are also available from NGF by calling 800-733-6006.

Pine Trace GC receives accolades and criticism

DETROIT — The Detroit Monthly's tongue-in-cheek sports section took a more serious turn in its August issue jab at Pine Trace, tabbed the best/worst public golf course.

While paying tribute to Pine Trace's beauty, it noted a fast-play rule admirable in theory but annoying in practice.

"Who wants a ranger to swoop down on you after the seventh hole to announce that you're two minutes behind schedule?" Also knocked was the carts-on-the-path-only rule and a nerve-shattering clubhouse loudspeaker well within earshot of anxiety-ridden putters on 18.

Wash. couple fights course permit denial

WENATCHEE, Wash. — While not contending county officials are trying to pull the wool over their eyes, H. P. and Edna Hansen claim they are being wrongly denied permission to build a nine-hole golf course in Cashmere, just west of the Chelan County Fairgrounds.

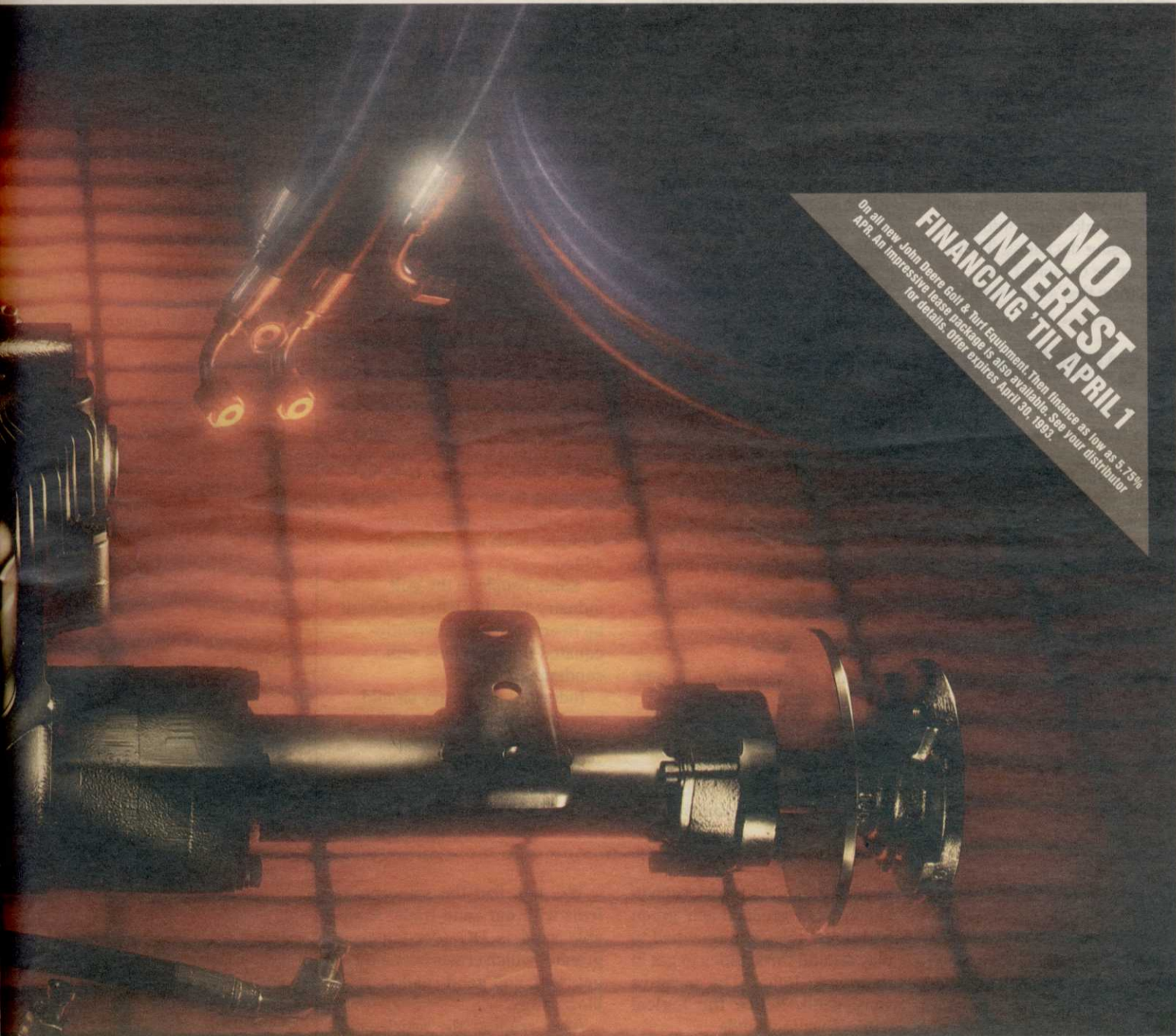
The Hansens have filed a writ of review against Chelan County and the county Board of Adjustment. They are asking the court to review and overturn a decision they insist was based on erroneous and faulty findings, including a claim that the golf course could damage adjacent property.

Inaugural Ga. Golf Summit set for Nov.

BUFORD, Ga. — The Georgia Golf Council's inaugural Georgia Golf Summit is due Nov. 15-17 at Stouffer PineIsle Resort here.

Designed to bring together those interested in growth and development of golf, the summit will provide a forum for industry networking. Focus will be on impact of the game in Georgia and exchanging ideas and developing plans to address key issues.

For more information, contact (404) 952-9063.



NO INTEREST FINANCING 'TIL APRIL 1
On all new John Deere Golf & Turf Equipment. Then finance as low as 5.75% APR. An impressive lease package is also available. See your distributor for details. Offer expires April 30, 1992.

of the same old lines

compaction and you begin to see how the John Deere 2243 separates itself from the rest. For the name of your nearest distributor, or free literature, call 1-800-544-2122.

Or write John Deere, Dept. 956, Moline, IL 61265.



CIRCLE #105

NOTHING RUNS LIKE A DEERE®

