

May

2-6 — *American Society of Golf Course Architects annual meeting on Long Island, N.Y.* Contact 312-372-7090.

3-5 — *NGF seminar on Public/Private Joint Ventures in Golf Course Development in Irving, Texas.* Contact Roger Yaffe at 407-744-6006.

4 — *West Texas GCSA meeting in Midland.* Contact Pam Deeds at 806-354-8447.

6-9 — *National Club Association Leadership Conference in Colorado Springs, Colo.* Contact 202-625-2080.

11-13 — *Crittenden Golf Development Expo in Palm Springs, Calif.* Contact 800-443-8318.

19 — *Diseases of ornamental plants seminar in Sanford, Fla.* Contact Seminole County Extension Service at 407-323-2500 ext. 5559.

28-29 — *Pacific Rim Resort & Golf Executive Conference in Honolulu.* Contact 415-453-1184.

June

4-6 — *Club Industry East at New York.* Contact Karen Reynolds-Feld at 800-541-7706.

7-9 — *NGF seminar on Alternative Golf Facilities — The Development and Operation of Ranges and Non-regulation Golf Courses in Falls Church, Va.* Contact Roger Yaffe at 407-744-6066.

15-16 — *Golf Course Design workshop at Harvard University Graduate School of Design. Sessions run all summer.* Call 617-495-4315 for information.

23 — *West Texas GCSA meeting in Lubbock.* Contact Pam Deeds at 806-354-8447.

27-July 2 — *American Seed Trade Assoc. 109th Annual Convention in Washington, D.C.* Contact 202-223-4080.

28-July 2 — *American Seed Trade Association Annual Convention in Washington, D.C.* Contact 202-638-3128.

July

1 — *Cornell Turfgrass Field Day at Pine Island, N.Y.* Contact 914-343-1105.

23-25 — *American Sod Producers Association Summer Convention & Field Days in Chicago.* Contact 708-705-8347.

26-28 — *International Lawn, Garden and Power Equipment Expo '92 in Louisville, Ky.* Contact 800-558-8767.

August

2-4 — *Georgia Golf Course Superintendents Association summer conference at Pine Mountain.* Contact 404-769-4076.

3 — *West Texas GCSA meeting in Canyon.* Contact Pam Deeds at 806-354-8447.

9-12 — *47th Annual Soil & water Conservation Society Meeting in Baltimore.* Contact 515-289-2331.

17-19 — *Golf East Expo in Orlando, Fla.* Contact 800-443-8318.

22 — *PGA of America's National Golf Day.* Contact Julius Mason at 407-624-8444.

September

10-13 — *Asian Golf Course '92 — Asian Golf Course Conference & Exhibition in Kuala Lumpur, Malaysia.* Contact in Singapore 65 4473680.

20-22 — *NGF seminar on Public/Private Joint Ventures in Golf Course Development in Newton, Mass.* Contact Roger Yaffe at 407-744-6006.

20-23 — *Florida Turfgrass Association annual conference and trade show in Jacksonville.* Contact 800-882-6712.

Continued on page 51

Golf Course Marketplace

To reserve space in this section, call Simone Marsteller, 813-576-7077



\$450
JOBCOMI

2 WEEK
FREE TRIAL



\$395
TEKK

**2-WAY
PORTABLE
SYSTEMS**

800-362-0646

**Anderson
Instrument
& supply co.**

1850 Kimball Rd. S.E., Canton, OH 44707

CIRCLE #160

GRACO MANUFACTURING INC. DISTRIBUTORS OF

Lestronic II BATTERY CHARGERS

- Model 7710, UL approved, 36 Volt - 25 AMP, Fully Automatic **\$240.00**
- Quantity Discounts Available
- Free Delivery
- All Models Available



If you're not buying from Graco, you're probably paying too much.

GRACO 800-872-4472

CIRCLE #161

Run Down Tee Problems?

PGI has the solution to your run down tee box problems. Once our synthetic TEE TURF is top dressed with sand, you can use irons or tee it up using a regular wooden tee. Ideal for those problem areas on the range or out on the course. For more information call PGI at 1-800-837-1744 today.

Distributor inquiries welcomed.
PGI • P.O. Box 501164 • Indianapolis, IN 46250



CIRCLE #162

GOLF COURSE CONSTRUCTION

NEW GOLF COURSES
GOLF COURSE RENOVATIONS



815 • 923 • 1868

Ask for Bob or Mark

18250 Beck Road, Marengo, IL 60152
Fax: 815-923-3662

CIRCLE #163

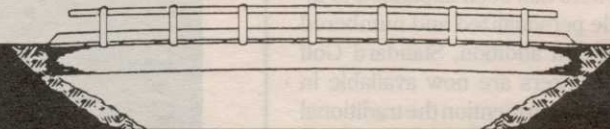
Keep That Edge



pinhigh
reel sharpening compound

**Contact Your Local Distributor or Call Us
Toll Free 1 (800) 422-4748**

CIRCLE #164



Timber Bridges

by Western Wood Structures, Inc.
Call Chuck Schmokel - 503/692-6900
1-800-482-4004

CIRCLE #165

Keep Your Divot Seed Mixture Where It Is Used ...



... in Divot Seed & Soil tee buckets next to the tee markers. Available in Cedar or Redwood slats and with companion Trash'M debris buckets.



**Ask Your Golf Course Distributor for
INNOVATIVE MAINTENANCE PRODUCTS**

From *Master of the Links*

2835 S. State St., Lockport, IL 60441
(815)723-4444 • Fax (815)723-4485



CIRCLE #166

SYNTHO-GLASS PIPE REPAIR KIT



- * Stops Leaks!
- * Water Activated!
- * Sets in 30 Minutes!
- * No Mixing & Measuring!
- * Easy to Apply!
- * Use Directly from Package!

For more information call:
(800) 328-0090
NEPTUNE RESEARCH, INC.
FAX: 1-407-683-8366

CIRCLE #167

EXCEL

BRIDGE MANUFACTURING CO.



Golf Course Bridges are our specialty! We fabricate easy-to-install, pre-engineered spans and deliver them anywhere in the U.S.A. Call today for a free consultation.

800/548-0054

12001 SHOEMAKER AVENUE, SANTA FE SPRINGS, CALIFORNIA
213/944-0701 FAX 213/944-4025

CIRCLE #168

Golf Course Marking System

- Tee Markers • Hazard Markers
- Fairway Yardage Markers
- Plastic Chain • Chain Posts
- Course Signs • Rope Stakes
- Driving Range Products
- Gallery Control System

UNBEATABLE PRICES!

For more information call Toll Free
1-800-969-5920

MARKERS, INC.

33597 Pin Oak Parkway, Avon Lake, OH 44012
Phone (216) 933-5927 FAX (216) 933-7839

CIRCLE #169

Golf Course Marketplace

To reserve space in this section, call Simone Marstiller, 813-576-7077

CALENDAR

Continued from page 50

October

3-6 — *Golf '92 International Golf Trade Fair in Dusseldorf, Germany.* Contact 312-781-5180.

15-19 — *Congress for Recreation and Parks in Cincinnati.* Contact Pat Phillips at 703-820-4940.

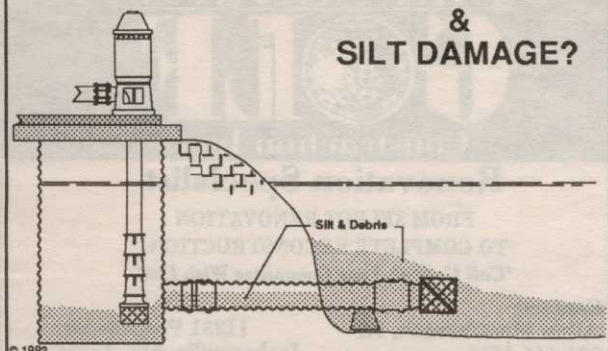
21-23 — *National Golf Foundation Golf Summit in Orlando, Fla.* Contact NGF at 407-744-6006.

November

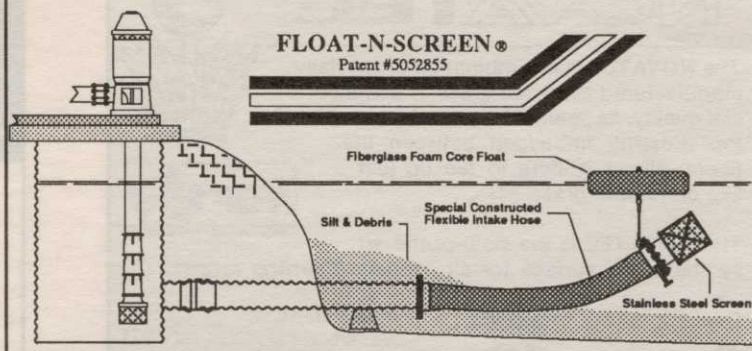
1-3 — *Georgia Golf Course Superinten-*

Continued on page 52

TIRED OF CLOGGED INTAKES & SILT DAMAGE?



RISE ABOVE THE PROBLEM



Float-N-Products™: Float-N-Screen®, Float-N-Foot Valve®, Float-N-Pump™, Skid-N-Pump™

By Greenscape Pump Services, Inc., 556 Coppell Road, Coppell Texas 75019 Ph. # (214) 393-0346

CIRCLE #170

PUBLIC GOLF COURSES

COORDINATION AND DEVELOPMENT...
A FULL-SERVICE, TURN-KEY PROGRAM
WITH EMPHASIS ON PUBLIC FINANCING.

Golf West Companies provides total golf course development... from preliminary market analysis to the first tee-off. Our turn-key development program delivers first-class 18-hole, par 72 golf course facilities ready for operation.

PRELIMINARY
MARKET ANALYSIS
FINANCING ARRANGEMENTS
DEVELOPMENT AND
CONSTRUCTION MANAGEMENT
OPERATOR
RECOMMENDATIONS

Call
us for our
**DRIVING
RANGE**
program

GOLF WEST
COMPANIES

7108 N. Fresno St., Suite 190 • Fresno, CA 93720 • 209/432-1346

CIRCLE #171



PAVELEC BROTHERS
GOLF COURSE CONSTRUCTION CO., INC.

- ✓ New Construction
- ✓ Renovation
- ✓ Field Drainage Systems

TONY PAVELEC
(201) 667-1643
EMIL PAVELEC
(201) 939-6182

98 Evergreen Ave.
Nutley, NJ 07110

CIRCLE #172

FOR SALE

APPROVED

GOLF COURSE SITE

SEYMOUR, CONNECTICUT
DESIGNED BY DESMOND MUIRHEAD
151 ACRES: INCLUDING 23 SINGLE-FAMILY LOTS
BY OWNER:

CALL 203/268-8611

CIRCLE #173

TRIMS

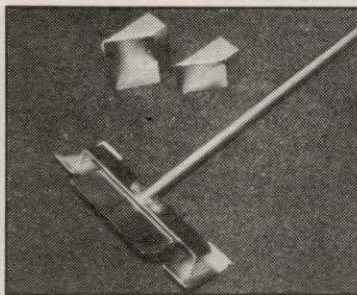
THE WORLD LEADER IN
GROUNDS MANAGEMENT SOFTWARE

System Features:

- PERSONNEL & LABOR RECORDS • CHEMICAL APPLICATION LOGS • EQUIPMENT SERVICE RECORDS
- SPARE PARTS INVENTORY
- BUDGET & EXPENSES • AND MORE

Call or write today LABB SYSTEMS/SOFTWARE
for your FREE Demo Disk 6018 EAST OSBORN ROAD
and Literature to see what SCOTTSDALE, AZ 85251
TRIMS can do for you! (800) 733-9710

CIRCLE #174



Sod Stripper™
cuts a strip of sod
for your small turf
repairs.

Call for Brochure
800-456-4351

Miltona

TURF PRODUCTS P. O. Box 164-M • Miltona, MN 56354

CIRCLE #175



Nationwide delivery • Install in less than two hours

Golf Course Bridges!

1-800-328-2047

**CONTINENTAL
BRIDGE**

Route 5, Box 178, Alexandria, MN 56308 • (612) 852-7500

Thousands in use.
Built to last.
Sponsor Member

NGF
NATIONAL GOLF FOUNDATION

B-DA-CL

CIRCLE #176



Golf Cart Storage

SECURE • FIREPROOF • MAINTENANCE FREE
TURNKEY SETUP OR DELIVERY NATIONWIDE

1-800-289-8827

100 WEST ASHE STREET, JOHNSON CITY, TENNESSEE 37601 (615)926-1470

CIRCLE #177

GREAT PRODUCT, GREAT PRICE.

THE AFFORDABLE AUTOMATIC
FERTILIZER INJECTION SYSTEM!

Used on golf courses and turf areas
across the USA.

- Automatic Operation
 - Proportional Control
- Sizes from 1/2 to over 100 acres of
irrigated area.



Turf Feeding Systems, Inc.

1183 Brittmoore #400 • Houston, Texas 77043 • (713) 465-1800 • Fax (713) 465-1866

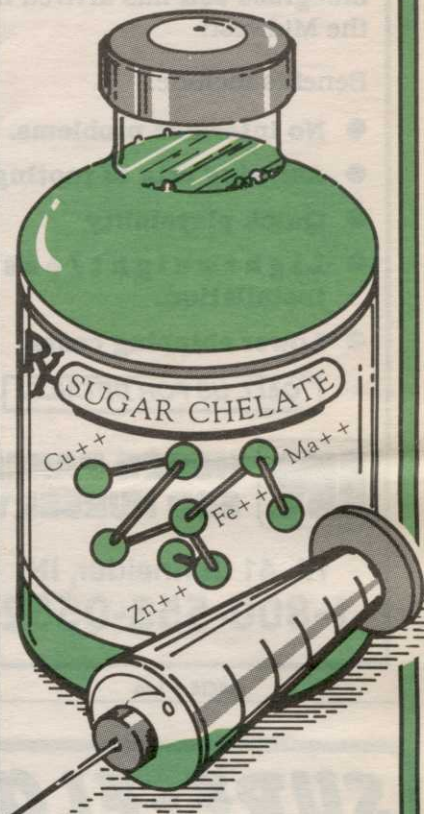
CIRCLE #178

\$8,617
Model 3700



MultiGreen II

"Like a shot
of Vitamins!"



Iron and micronutrient deficient turf and ornamentals respond quickly to MultiGreen II. Iron, zinc, copper and manganese are chelated in natural sugars which prevents chemical reaction with soil and keeps the micronutrients available for maximum plant uptake. Nothing improves root growth, color and stress tolerance more.

MultiGreen II tank mixes with many pesticides for beneficial results. Its natural spreader sticker properties enhance the results of many chemicals while providing all the micronutrients needed for the healthiest possible turf and ornamentals. And all this without burning the foliage.

Regal Chemical Company
P.O. Box 900
Alpharetta, Georgia 30239
Phone: 404-475-4837
1-800-621-5208

REGAL
CHEMICAL COMPANY

CIRCLE #148

Continued from page 51

dents Association annual meeting on St. Simons Island. Contact 404-769-4076.

10-13—New York State Turfgrass Association annual Turf and Grounds Exposition in Rochester. Contact 800-873-TURF.

29-Dec.2—Canadian TurfGrass Convention and Trade Show in Halifax, Nova Scotia. Contact Chuck Desveaux at 416-602-8873.

* — For more information or to register, contact Betsy Evans, education coordinator, Golf Course Superintendents Association of America, at 800-472-7878 or 913-841-2240. The seminars are dependent upon the availability of the instructors, and are therefore subject to change. One-day seminars cost \$100 for GCSAA members and \$120 for non-members; two-day seminars cost \$180 for members and \$210 for non-members.

SOIL-FREE SOD?

Yes, **StrathAyr soil-free Penncross creeping bent** and **"Executive Blend" bluegrass sod** has arrived in the Midwest!

Benefits include:

- No interface problems.
- Amazing rate of rooting.
- Quick playability
- Lightweight/easy installation.
- Lower shipping costs.

CALL US FOR DETAILS!

IR HUBER RANCH SOD NURSERY

Rt. 41 Schneider, IN
1-800-553-0552

CIRCLE # 146

SURE-FLO The Self-Cleaning Strainer

Several styles of foot valves with Self-Cleaning Strainers.



patent no.
4822486

High and low pressure models available.

Manufactured by:
Perfection Sprinkler Co.

2077 S. State St.
P.O. Box 1363
Ann Arbor, MI 48106

Phone 313-761-5110
FAX 313-761-8659

SURE-FLO FITTINGS

CIRCLE # 147

Golf Course Marketplace

To reserve space in this section, call Simone Marstiller, 813-576-7077

"NOVATEE"

The **NOVATEE** is a combination of specially manufactured **synthetic grass** of commercial quality. Its patented design, featuring top dressing imbedded between the fibers, allows golfers to tee up just like on natural grass.



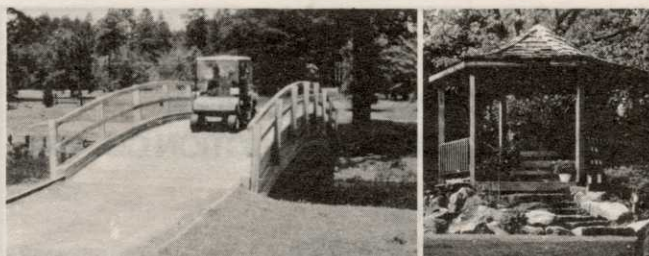
The **NOVATEE** is the state-of-the-art synthetic tee surface for all courses & driving ranges.

Dealer inquiries requested.

PO/CP 533 CSL
Montreal, P.Q., Can. H4V 2Z1
514/486-1696
Fax 514/486-9927

SyntenniCo Inc.

CIRCLE #179



Glued-Laminated WOOD STRUCTURES

Order Direct From The Leading Manufacturer in U.S.

- Complete Prefabricated Packages
- Direct Distribution Throughout the U.S.
- Ready for Fast Erection
- Custom Design & Engineering

UNIT STRUCTURES, INC.

P.O. BOX A MORRISVILLE, N.C. 27560

CALL 1-800-777-UNIT

CIRCLE #181



PIPE LOCATOR THE LOCAT™ INEXPENSIVE

Locates, traces underground pipes, including drain pipes, made of PVC, ABS, steel and cement. Finds sprinklers, valves and clogs.

Used by Hundreds of Golf Courses

Satisfaction Guaranteed

Bloch & Company

Box 18058, Cleveland, OH 44118
(216) 371-0979

CIRCLE #183

Birds or Animals a PROBLEM??

Scare them away with

SHELLCRACKERS® a Pest Control Device

that safely disrupts eating & nesting habits.

For more information call or write:

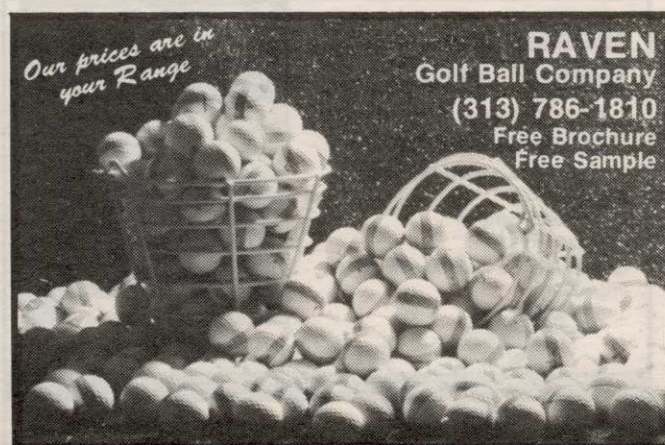
JPF Distributors

9 Union Square, Suite 184 N
Southbury, Connecticut 06488

800-582-8843

203-262-1463

CIRCLE #185



Our prices are in
your Range

**RAVEN
Golf Ball Company**

(313) 786-1810

Free Brochure
Free Sample

CIRCLE #187

MacCurrach GOLF Construction Inc.

Renovation Specialist

FROM SELECT RENOVATION
TO COMPLETE RECONSTRUCTION.

"Call Us With Your Committee Wish List"

Contact:
Allan MacCurrach, III
904-646-1581

11231 Portside Dr.
Jacksonville, Fla. 32225

CIRCLE #180

ENGRAVED YARDAGE LABELS

FOR SPRINKLER HEADS



- Bright colors
- Fasteners included
- Orders quickly shipped UPS

Call
for Free
Sample Kit

1-800-284-YARD

THE YARD EDGE GOLF CO.

P.O. Box 13159

Wichita, KS 67213

CIRCLE #182



MOTOROLA Radius PORTABLE RADIOS

- Free 2 week trial
- Radios start at \$99
- Up to a 3 year warranty

CALL FOR MORE INFORMATION

PAGECOM

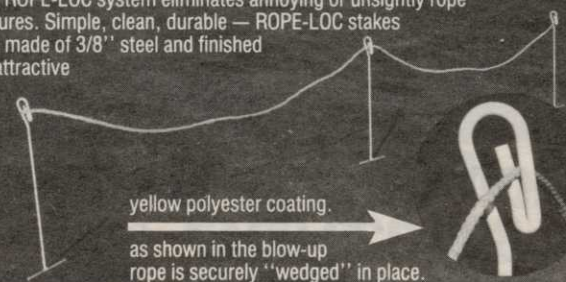
1-800-527-1670

*OTHER BRANDS AVAILABLE

CIRCLE #184

NEW ROPE-LOC™

Finally, a rope and stake system that works! Simple but unique... the ROPE-LOC system eliminates annoying or unsightly rope failures. Simple, clean, durable — ROPE-LOC stakes are made of 3/8" steel and finished in attractive



yellow polyester coating.

as shown in the blow-up
rope is securely "wedged" in place.

Call for a special introductory offer.

1-313-429-9571, 1-800-253-2112 or FAX: 313-429-3985

PRECISION TOOL PRODUCTS CO. • 7836 Bethel Church Rd. • Saline, MI 48176

CIRCLE #188



Available in 15",
18" and 24" bars.

ACCU-GAGE™

Accu-gage™ is a precision measuring instrument for making highly accurate height-of-cut adjustments on greensmowers or other precision mowers.

GROOMER-GAGE™

Groomer-gage™ is a precision measuring instrument for accurately setting the desired grooming depth of groomer or verticutter units.

For more information on this and other precision tools call Toll Free:

1-800-253-2112 or 313-429-9571 FAX: 313-429-3985

PRECISION TOOL PRODUCTS CO. 7836 Bethel Church Rd. • Saline, MI 48176

CIRCLE #186