

Dye, Fazio put signatures on unique Disney courses

Has age ever determined which golf course architect got which piece of land in a two-course project?

It did at Disney World where the 60-ish Pete Dye got to choose over the 40-ish Tom Fazio.

The result has Walt Disney's development company flapping its ears in joy over its new Bonnet Creek Golf Club, encompassing Dye's Eagle Pines and Fazio's Osprey Ridge.

"Pete and I met about it. We knew we had

two pieces of land, one low-profile and one with more contour and elevation," said Fazio. "So I said, 'Pete, you're older. You choose.' Pete said, 'I'll do the low-profile course.'"

Fazio added: "I think it turned out to be exactly what Disney wanted — two separate, distinct golf courses, that are almost total opposites, coming out of the same clubhouse."

Tom Sunnarborg, development manager for Disney Development Co. in Orlando, said, "We've found that people will stay an extra day here to play the other course, which is the most we could hope for."

Fazio said the courses are almost total opposites.

"We had a north course (now Osprey Ridge) and a south course (Eagle Pines)," Fazio said. "The south course had to meander through the environmental issues — wetlands and some future development. The north course had some wetlands and other areas, and had potential for more water bodies and dirt. They almost set up a different style."

Sunnarborg said: "Tom filled and Pete cut. So Tom's course is very high and wild, a lot of up and down, a lot of topography, holes playing north, south, east and west, holes playing into the ridge, off the ridge, on the side of the ridge. It's a very spectacular golf course. Pete's is very subtle, maybe a little bit more difficult, but very low-profile, with a lot of water, a lot of sand."

A long-time environmental innovator, Dye wanted to do something environmentally positive at the Disney site.

"He did that in a lot of ways the public doesn't notice," Sunnarborg said.

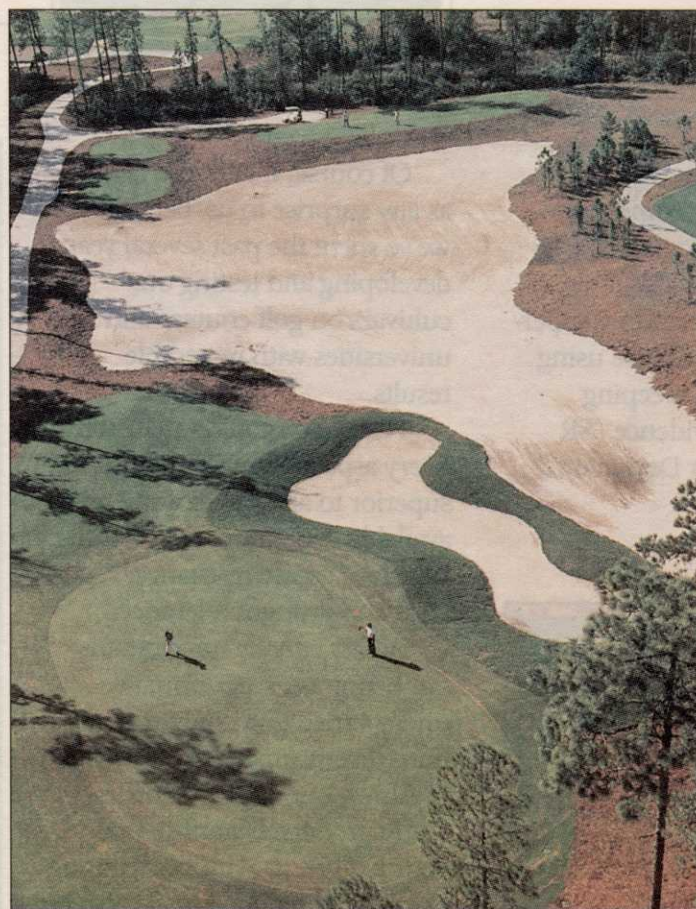
"He is also very interested in speed of play. He did a lot of little things. St. Augustine grass is on the in-play side of water and bunkers, so balls don't get lost. They went way back into out-of-play areas and cleared them out so it's easy to find the ball. A lot of things make this very fast and fun to play."

"Both golf courses have exceeded our expectations."



Tom Fazio's Osprey Ridge course offers plenty of challenges.

Photo courtesy of Disney Development



Pete Dye's Eagle Pines course is flatter and more subtle than Fazio's Osprey Ridge, but it may be as tough a challenge, say Disney Development Co. officials.

Photo courtesy of Disney Development

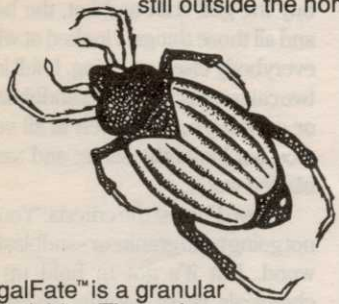
RegalFate™

THE FATAL ATTRACTION FOR INSECTS!



Now landscape managers can provide a service urgently needed by homeowners.

As easily as spreading fertilizers, you can control fleas, ticks, ants, spiders and many other pesky insects while they are still outside the home.



RegalFate™ is a granular insecticide. The active ingredient is impregnated on a 100% edible, organic carrier and then baited to attract the insects to eat the toxicant. Ingestion is many times more effective than contact or vapor action of insecticides.

Just spread a 10 foot band of RegalFate™ around the house or building for complete insect control.



Regal Chemical Company
P.O. BOX 900 / ALPHARETTA, GA 30239
PHONE 404-475-4837 / 800-621-5208

Erosion Control has never been more advanced



North American Green erosion control/revegetation blankets provide ideal protection for newly-seeded undulations, out-of-bounds slopes and drainage channels. With a diversified line of seven different erosion control blankets, available with Cell-O-Seed seed-incorporation, North American Green offers cost-effective solutions to the wide variety of erosion/revegetation problems threatening golf course construction projects.

Cost-effective erosion control solutions for course construction are easily designed with the North American Green Erosion Control Plan software package. This computer-based system will assist you in determining suitable erosion control blankets and vegetal stands for effective slope and channel stabilization.

For further information on how North American Green can reduce soil erosion and solve revegetation problems on your course, contact North American Green today.

14649 Highway 41 North • Evansville, IN 47711 • In State (812) 867-6632 • 1-800-772-2040

EROSION CONTROL BLANKETS