

Golf Course Marketplace

To reserve space in this section, call Simone Marsteller, 813-576-7077

ADVERTISING INFO.

1992 Rates 2X 6X 12X
 Per col. inch: \$55.00 \$50.00 \$40.00
 Add-on per 1/4": \$13.75 \$12.50 \$10.00
 Logo incl. in ad: \$30.00 \$30.00 \$30.00

- Minimum 2-time insertion.
- Prepayment is required.

EMPLOYMENT

POSITIONS AVAILABLE

Superintendents, Shapers, Foremen, Golf Construction personnel needed at all levels. Must be willing to travel. Fax resume & info. to **904-646-1873**.

SUPERVISORS/SHAPERS

EXPERIENCED GOLF COURSE CONSTRUCTION SUPERVISORS, SHAPERS & OTHER EQUIPMENT OPERATORS NEEDED. Excellent compensation. Domestic & foreign projects. Fax info. to **(817) 387-4943**.

WANTED

Experienced golf course construction supervisor. Must be willing to move. Also wanted -- experienced equipment operators. Fax resume.

(313) 693-6006

REAL ESTATE

NEAR ORLANDO, FLORIDA

30 minutes from downtown. 727 acres with lakes on US 27. \$3,000,000. Other similar listings, larger & smaller.

MAYFIELD REALTY
(904) 753-7877

TEXAS GOLF COURSES

9 & 18 holes — Statewide.
 Some with extra land, dev. lots.
 Descriptive list available.

TEXAS GOLF PROPERTIES
 1603 Lightsey — Austin, TX 78704
 512/442-7105 • Fax 512/442-1812

APPROVED GOLF COURSE SITE FOR SALE!

Seymour, Connecticut
 Designed by Desmond Muirhead
 151 Acres/Including 23 Single-Family Lots
Call Owner: 203-268-8611

EDUCATIONAL OPPORTUNITIES

GRAYSON COLLEGE, Dennison, TX. 2-year technical program in golf course & turf grass management. 18-hole golf course on campus. Dormitories, placement assistance, financial aid & scholarships available. Contact: **GCC, 6101 Grayson Dr., Dennison, TX 75020. (903) 463-8653**.

FOR SALE

NEW VIDEOS

"UNWRITTEN RULES OF GOLF"
 Designed to speed up play. It covers etiquette & cart usage. For use in Pro Shops, Locker Rooms or Grills.
 • 12-minute sampler: \$19.95
 • 2-hour loop version: \$49.95

"INTRODUCTION TO GOLF COURSE MAINTENANCE"
 Spanish or English. It covers green cutting, cup changing, cart maintenance & sand trap raking. \$49.95 + \$4.00 shipping & handling. Now being used in 26 states!

MACH IV PRODUCTIONS
 P.O. Box 543
 Wauconda, IL 60084

STEEL BUILDINGS
Save up to 50% on Arch Style Buildings. Factory Clearance. 25x30; 40x40; 50x100 & others. Factory Direct.
UNIVERSAL STEEL
1-800-548-6871

POND LINERS

Buy direct from fabricator 20 & 30 mil. P.V.C. Made to order. Under 20 cents per sq. ft. Installation or supervision available. Call...

COLORADO LINING COMPANY
(303) 841-2022

TULIP COLORBLENDS — NATURE'S FIREWORKS

Tulips for Fall planting. New ideas and Competitive Prices. GCSAA members have pre-approved credit. Customer Service & Follow-up Assistance, call Toll Free **1-800-877-8637**.



SCHIPPER & CO.
 PO Box 7584, Greenwich, CT, 06836-7584
 "Our Roots Are Bulbs"

QUALITY TURF GRASSES

Sod or sprigs shipped anywhere, desoiled if necessary. Meyer Z-52, Tifdwarf, Tifway, Tifway II, Tifgreen II & Fescue. Planting avail. for golf courses, athletic fields, etc.

QUAIL VALLEY FARM, INC.
(800) 666-0007
FAX (501) 221-1243

PENNSYLVANIA GROWN SOD

Soil-Free Penncross Bentgrass (Very adaptable to any medium) Bluegrass Blend, Bluegrass/Ryegrass blend shipped via our trucks, forklift unloaded.

VICNOR FARMS, INC.
 Connoquenessing, PA 16027
(800) 842-0461

BUSINESS SERVICES



Mid Tenn Turf, Inc.

Golf course, athletic field renovations & new construction. Sodding, sprigging, row planting, fairway renovations. Complete turn key operations. Products include: Vamont Bermuda; Tif & Tif II Bermudas; Meyer Z-52 Zoysia; Blended Fescue.

Mid Tenn Turf, Inc.
 Rt. 3, Box 3199
 Manchester, TN 37355
 Phone (615) 728-0583

TO ADVERTISE IN THIS SECTION, CALL (813) 576-7077 AND ASK FOR SIMONE... SHE'LL GIVE YOU THE BEST RATES AROUND.

GOLF COURSE ACCESSORIES

WHY HASSLE WITH SEVERAL VENDORS?

- Scorecards
- Sprinkler Tagging
- Yardage Books
- Fairway Markers
- Laser Measuring
- Tee Signs (wood or granite)

Call **BETTER GOLF, INC.**
1-800-468-8672

SAVE ON PERSONALIZED FLAGS

Buy factory direct & save 40% or more on personalized flags. Flagpoles, tee markers, etc. also available. Fast personalized service guaranteed. Call toll free.



FOUR SEASONS GOLF COMPANY

P.O. Box 78011
 Greensboro, NC 27427
1-800-476-7005

CUSTOMIZED YARDAGE MARKERS

- ✓ Sprinkler head yardage tags to fit all automatic systems
 - ✓ Highest quality **bronze** markers for tees, 100, 150 & 200; & cart paths
 - ✓ **Yardage books** — 1 & 4 color
 - ✓ **Laser measure** per USGA standards
- For more information, references or samples, contact:

From Tee to Green, Inc.
 1707 Brandywine Trail
 Ft. Wayne, IN 46845
(800) 932-5223

LASER MEASURING

LASER MEASURING and SPRINKLER YARDAGE MARKERS

We do it all. Laser measure & installation (same day) of **custom metal yardage markers** for all types of sprinkler heads. Warranty included. Also tee to green measurements, granite fairway markers. Sprinkler yardage markers may be purchased separately. Contact Nick for samples & references. **Fairway Designs of Florida, 800-36-TAGIT.**

Golf Course Marketplace

To reserve space in this section, call Simone Marsteller, 813-576-7077

Language guide publishers turn sights on Japan

By Mark Leslie

If you can travel throughout Europe and the Americas now with your trusty "Do You Speak Golf?" book in your pocket but you're looking toward a trip to Japan with trepidation, don't worry.

The publishers of the handy foreign language guide for the golf course are coming out with a Japanese version in May.

Gregg M. Cox of Pandemic International Publishers, Inc. said his Japanese version is formatted basically the same as the first one released last year, which translated English phrases into the languages of Western Europe and North, Central and South America in an easy-to-understand pronunciation guide. It covered French, Italian, Spanish, Portuguese, German, Norwegian, Swedish, Danish and Dutch.

The new book will be laced with basic conversation and idiomatic expressions as well as the meat-and-potatoes of "pass the 1-iron (ichi inn)," Cox said. If you need a caddy or wish to wager on a hole, here are the passwords.

Just as the European edition was written with several golfers, Cox tapped the wisdom of Japanese golfers in preparing the new version of "Do You Speak Golf?"

It translates English to Japanese and Japanese to English, with phonetics helping pronunciation.

The project was delayed, Cox said, by waiting for a keyboard with Japanese characters.

He only hopes it sells as well as the European issue.

"We've been inundated with calls," he said, adding it has been sold at some European golf courses, and European book distributors started marketing it in February.

The price is \$8.95, plus \$2 for shipping and handling. Mail orders should be addressed to Pandemic International Publishers, Inc., P.O. Box 61849, Vancouver, Wash. 98666.

Standard Golf releases new accessories guide

Standard Golf Co.'s colorful, 44-page, 1992 *Catalog of Golf Course Accessories* includes many products designed to satisfy superintendents' requests.

The new Debris Rake solves the problem of picking up pine needles and other small debris. Its tempered steel wire teeth grab everything in their path.

The best-seller line of Dimple-T markers has expanded to include personalized and numbered styles. Many Standard Golf tee markers are now available in black, in addition to the traditional red, white, blue and yellow.

Highly visible PVC Hazard Markers can be ordered with built-in stakes as well as with the original ground-anchor system. New, lower 12-inch stake ropes and 18-inch sign posts call attention to new plantings, ground under repair and cart path directions.

For the catalog, more information and the names of nearby authorized distributors, write Standard Golf Co., P.O. Box 68, Cedar Falls, Iowa 50613 or call 319-266-2638.

TRIMS

THE WORLD LEADER IN
GROUNDS MANAGEMENT SOFTWARE

System Features:

- PERSONNEL & LABOR RECORDS • CHEMICAL APPLICATION LOGS • EQUIPMENT SERVICE RECORDS
- SPARE PARTS INVENTORY
- BUDGET & EXPENSES • AND MORE

Call or write today LABB SYSTEMS/SOFTWARE
for your FREE Demo Disk 6018 EAST OSBORN ROAD
and Literature to see what SCOTTSDALE, AZ 85251
TRIMS can do for you! (800) 733-9710

CIRCLE #152

GOLF COURSES FOR SALE



Contact:
Richard M. Farrell
(813) 447-8181



CIRCLE #153

ADHESIVE-BACKED DECALS

GREASE DAILY

English &
English/Spanish

LUBRICAR DIARIO

Introductory Offer
\$21.95 P.P.

Includes 20 assorted yellow vinyl safety, warning & directional labels. ORDER YOURS TODAY!

SAFETY SPECIALTY DECALS

P.O. Box 478, Plainfield, IL 60544
(815) 436-5955

Free brochure available featuring over 75 decals.

CIRCLE #154



MOTOROLA Radium PORTABLE RADIOS

- Free 2 week trial
- Radios start at \$99
- Up to a 5 year warranty

CALL FOR MORE INFORMATION

PAGE.COM

1-800-527-1670

*OTHER BRANDS AVAILABLE

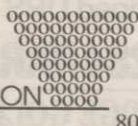
CIRCLE #155

WATER TREATMENT SYSTEMS FOR ANY ENVIRONMENT

Worrying about wetland & ground water damage due to chemical migration? Using aerators that are expensive to run & still require repeated applications of chemicals to your water system? We have a safe & effective alternative to chemical treatment. Our systems meet the challenging demands of irrigation water storage, including effluent.

Call for details & your local distributor.

E.P. AERATION



946 Griffin Street
Grover City, CA 93433
805-489-4218; Fax 805-489-3235

CIRCLE #156

"NOVATEE"

The NOVATEE is a combination of specially manufactured synthetic grass of commercial quality. Its patented design, featuring top dressing imbedded between the fibers, allows golfers to tee up just like on natural grass.



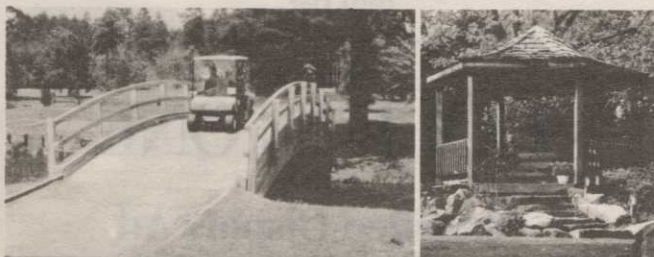
The NOVATEE is the state-of-the-art synthetic tee surface for all courses & driving ranges.

Dealer inquiries requested.

PO/CP 533 CSL
Montreal, P.Q., Can. H4V 2Z1
514/486-1696
Fax 514/486-9927

SyntenniCo Inc.

CIRCLE #157



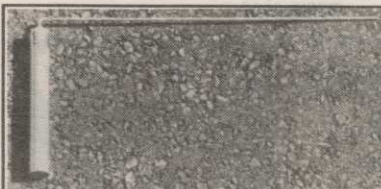
Glued-Laminated WOOD STRUCTURES

Order Direct From The Leading Manufacturer in U.S.

- Complete Prefabricated Packages
- Ready for Fast Erection
- Direct Distribution Throughout the U.S.
- Custom Design & Engineering

UNIT STRUCTURES, INC. CALL
P.O. BOX A MORRISVILLE, N.C. 27560 1-800-777-UNIT

CIRCLE #158



PIPE LOCATOR THE LOCAT™ INEXPENSIVE

Locates, traces underground pipes, including drain pipes, made of PVC, ABS, steel and cement. Finds sprinklers, valves and clogs.

Used by Hundreds of Golf Courses
Satisfaction Guaranteed

Bloch & Company
Box 18058, Cleveland, OH 44118
(216) 371-0979

CIRCLE #159

March

- 3 — GCSAA Seminar on spray technicians in West Palm Beach, Fla.*
- 3-4 — GCSAA Seminar on Golf Course Design Principles in Cincinnati.*
- 3-5 — Massachusetts Turfgrass Conference and Industrial Trade Show in Springfield. Contact 413-549-5295.
- 9-10 — GCSAA Seminar on Landscape Design & Plant Materials in Bloomington, Ill.*
- 9-11 — GCSAA Seminar on developing and maintaining effective management employee relationship in Tarrytown, N.Y.*
- 10 — GCSAA Seminar on spray technicians in Mamaroneck, N.Y.*
- 10 — GCSAA Seminar on Turfgrass Stress Management in West Chester, Pa.*
- 15-17 — National Golf Foundation symposium on Obstacles Overcome by Successful Golf Course Operators at Ponte Vedra Beach, Fla. Contact 407-744-6006.
- 16-17 — GCSAA Seminar on Environmental Considerations in Golf Course Management in Minneapolis.*
- 18-19 — Financing Golf Course Developments seminar in San Diego. Contact 800-285-2332.
- 22-25 — National Club Association Club Leadership Conference in Pinehurst, N.C. Contact 202-625-2080.
- 24 — USGA Regional Conference in Wakefield, Mass. Contact 908-234-2300.
- 24-25 — Maine Turfgrass Conference & Show in Portland. Contact Chuck Ravis at 207-395-4298.
- 26-29 — Golf Asia 92 in Singapore. Telephone 65 2966961
- 30-31 — Meet the Lenders Conference in Orlando, Fla. Contact 415-382-2486.
- 31 — U.S. Golf Association Regional Conference in Atlanta. Contact 404-769-4076.

April

- 5-7 — NGF seminar on Golf Course Operations in the '90s - Issues Affecting the Future of Successful Operations in Newport Beach, Calif. Contact Roger Yaffe at 407-744-6006.
- 6-7 — GCSAA Seminar on Landscape Design & Plant Materials in Bolton, Mass.*
- 9 — Water conservation and quality seminar in Sanford, Fla. Contact Seminole County Extension Service at 407-323-2500 ext. 5559.
- 13-14 — Southeastern Turfgrass Conference at Tifton, Ga. Contact 404-769-4076.
- 22-23 — Club Industry West at Long Beach, Calif. Contact Karen Reynolds-Feld at 800-541-7706.
- 28-30 — Agri-business computer conference in Sanford, Fla. Contact Seminole County Extension Service at 407-323-2500 ext. 5559.

May

- 2-6 — American Society of Golf Course Architects annual meeting on Long Island, N.Y. Contact 312-372-7090.
- 3-5 — NGF Seminar on Public/Private Joint Ventures in Golf Course Development in Irving, Texas. Contact Roger Yaffe at NGF, at 407-744-6006

* — For more information or to register, contact Betsy Evans, education coordinator, Golf Course Superintendents Association of America, at 800-472-7878 or 913-841-2240. The seminars are dependent upon the availability of the instructors, and are therefore subject to change. One-day seminars cost \$100 for GCSAA members and \$120 for non-members; two-day seminars cost \$180 for members and \$210 for non-members.

Golf Course Marketplace

To reserve space in this section, call Simone Marsteller, 813-576-7077

Save Your Back!

Pull posts easily with the Miltona Post Puller.

- Fits any shape post
- Works with a simple jacking motion

Call 800-456-4351 today!



TURF PRODUCTS P.O. Box 164 • Miltona, MN 56354

CIRCLE #160

Keep Your Divot Seed Mixture Where It Is Used ...

... in Divot Seed & Soil tee buckets next to the tee markers. Available in Cedar or Redwood slats and with companion Trash'M debris buckets.

Ask Your Golf Course Distributor for **INNOVATIVE MAINTENANCE PRODUCTS**

From *Master of the Links*

2835 S. State St., Lockport, IL 60441
(815)723-4444 • Fax (815)723-4485




CIRCLE #162

Keep That Edge

pinhigh[®]
reel sharpening compound

Contact Your Local Distributor or Call Us
Toll Free 1 (800) 422-4748



CIRCLE #164

EXCEL
BRIDGE MANUFACTURING CO.

Golf Course Bridges are our specialty! We fabricate easy-to-install, pre-engineered spans and deliver them anywhere in the U.S.A. Call today for a free consultation.

800/548-0054

12001 SHOEMAKER AVENUE, SANTA FE SPRINGS, CALIFORNIA
213/944-0701 FAX 213/944-4025



CIRCLE #166

GREAT PRODUCT, GREAT PRICE.

\$8,617
Model 3700

THE AFFORDABLE AUTOMATIC FERTILIZER INJECTION SYSTEM!

Used on golf courses and turf areas across the USA.

- Automatic Operation
- Proportional Control

Sizes from 1/2 to over 100 acres of irrigated area.

Turf Feeding Systems, Inc.

1183 Brittmoore #400 • Houston, Texas 77043 • (713) 465-1800 • Fax (713) 465-1866



CIRCLE #168

PUBLIC GOLF COURSES

COORDINATION AND DEVELOPMENT...
A FULL-SERVICE, TURN-KEY PROGRAM WITH EMPHASIS ON PUBLIC FINANCING.

Golf West Companies provides total golf course development ... from preliminary market analysis to the first tee-off. Our turn-key development program delivers first-class 18-hole, par 72 golf course facilities ready for operation.

**PRELIMINARY MARKET ANALYSIS
FINANCING ARRANGEMENTS
DEVELOPMENT AND CONSTRUCTION MANAGEMENT
OPERATOR RECOMMENDATIONS**



7108 N. Fresno St., Suite 190 • Fresno, CA 93720 • 209/432-1346

CIRCLE #161

SYNTHO-GLASS
PIPE REPAIR KIT



- * Stops Leaks!
- * Water Activated!
- * Sets in 30 Minutes!
- * No Mixing & Measuring!
- * Easy to Apply!
- * Use Directly from Package!

For more information call:
(800) 328-0090

NEPTUNE RESEARCH, INC.
FAX: 1-407-683-8366

CIRCLE #163

The Scare-Away System

REED-JOSEPH INTERNATIONAL

We are **SPECIALISTS** in the field of Bird and Animal Pest Control ... and have been for over 30 YEARS

If You have a Problem ... Give us a Call!
800-647-5554



Box 894 GREENVILLE, MISSISSIPPI 38702

CIRCLE #165

ENGRAVED YARDAGE LABELS
FOR SPRINKLER HEADS

Call for Free Sample Kit

• Bright colors

• Fasteners included

• Orders quickly shipped UPS

1-800-284-YARD

THE YARD EDGE GOLF CO.

P.O. Box 13159 Wichita, KS 67213



CIRCLE #167

Score a **HOLE IN ONE** with a **Classified Display Ad** like this one in **GOLF COURSE MARKETPLACE**

Call Simone Lewis today at **(813) 576-7077** for details...

CIRCLE #169

Golf Course Marketplace

To reserve space in this section, call Simone Marsteller, 813-576-7077

AD INDEX

H HOOD MANAGEMENT GROUP

4612 Oleander Drive, Myrtle Beach, SC 29577

Building a Golf Course...call Nicklaus, Dye or Fazio.
Building a Golf Swing...call your local PGA Pro.

Building a successful Club House business...

Call Hood Management Group
Gary Skirry, President

Executive Search/Consulting/Troubleshooting

1-800-882-GARY

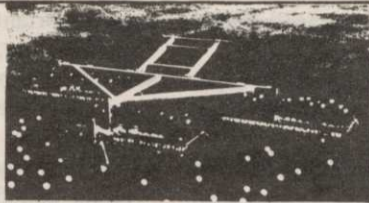
CIRCLE #170

RANGE BOSS™



The LITE
Range Picker

SGD P.O. BOX 8410
AKRON, OHIO 44320



Now SGD Company is pleased to offer the Range Boss™ line of LITE Pickers. From the husky tubular steel frames to the reinforced picker discs. The Range Boss™ is tough yet lite weight. Whether you need an EZ hand push single gang for hard to reach and light traffic areas, the three gang for medium traffic ranges, the five gang picker or seven gang picker for high customer count ranges. Choose the correct size then order Range Boss. Write or call Toll Free for your personal catalogue today.

TOLL FREE: 800-321-3411 (216)239-2828
FAX: (216)239-2668

CIRCLE #172

MacCurrach GOLF

Construction Inc.

Renovation Specialist

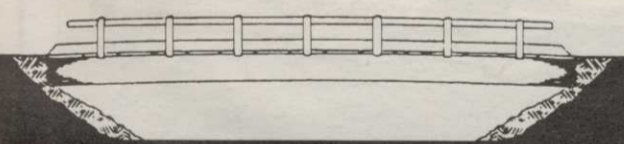
FROM SELECT RENOVATION
TO COMPLETE RECONSTRUCTION.

"Call Us With Your Committee Wish List"

Contact:
Allan MacCurrach, III
904-646-1581

11231 Portside Dr.
Jacksonville, Fla. 32225

CIRCLE #174



Timber Bridges

by Western Wood Structures, Inc.
Call Chuck Schmokel - 503/692-6900

1-800-482-4004

CIRCLE #176

Golf Course Marking System

- Tee Markers • Hazard Markers
- Fairway Yardage Markers
- Plastic Chain • Chain Posts
- Course Signs • Rope Stakes
- Driving Range Products
- Gallery Control System

UNBEATABLE PRICES!

For more information call Toll Free
1-800-969-5920

MARKERS, INC.

33597 Pin Oak Parkway, Avon Lake, OH 44012
Phone (216) 933-5927 FAX (216) 933-7839

CIRCLE #178



Nationwide delivery • Install in less than two hours

Golf Course Bridges!

1-800-328-2047

Thousands in use.
Built to last.
Sponsor Member

CONTINENTAL BRIDGE

Route 5, Box 178, Alexandria, MN 56308 • (612) 852-7500



CIRCLE #171

FOR SALE

APPROVED

GOLF COURSE SITE

SEYMOUR, CONNECTICUT

DESIGNED BY DESMOND MUIRHEAD

151 ACRES: INCLUDING 23 SINGLE-FAMILY LOTS

BY OWNER:

CALL 203/268-8611

CIRCLE #173

Birds or Animals a PROBLEM??

Scare them away with

SHELLCRACKERS®

a Pest Control Device

that safely disrupts eating & nesting habits.

For more information call or write:

JPF Distributors

9 Union Square, Suite 184 N
Southbury, Connecticut 06488

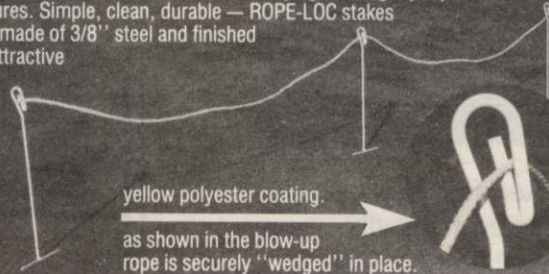
800-582-8843

203-262-1463

CIRCLE #175

NEW ROPE-LOC™

Finally, a rope and stake system that works! Simple but unique... the ROPE-LOC system eliminates annoying or unsightly rope failures. Simple, clean, durable — ROPE-LOC stakes are made of 3/8" steel and finished in attractive



yellow polyester coating.

as shown in the blow-up rope is securely "wedged" in place.

Call for a special introductory offer.

1-313-429-9571, 1-800-253-2112 or FAX: 313-429-3985

PRECISION TOOL PRODUCTS CO. • 7836 Bethel Church Rd. • Saline, MI 48176

CIRCLE #177



Available in 15",
18" and 24" bars.

ACCU-GAGE™

Accu-gage™ is a precision measuring instrument for making highly accurate height-of-cut adjustments on greensmowers or other precision mowers.

GROOMER-GAGE™

Groomer-gage™ is a precision measuring instrument for accurately setting the desired grooming depth of groomer or verticutter units.

For more information on this and other precision tools call Toll Free:

1-800-253-2112 or 313-429-9571 FAX: 313-429-3985

PRECISION TOOL PRODUCTS CO. 7836 Bethel Church Rd. • Saline, MI 48176

CIRCLE #179

RS#	Advertiser	Page
128	The Andersons	28
118	Aquatrols	20
110	B.H.Sales	14
173	Bargas Inc.	53
159	Bloch & Co.	51
153	Bobby Byrd Real Estate	51
103	Bunton	4-5
108	Ciba-Geigy	11
126	Ciba-Geigy	24-25
137	Ciba-Geigy	44-45
107	Ciba-Geigy *	9
134	Club Car	38
171	Continental Bridge	53
130	Cushman	30-31
133	Cushman	36-37
135	Cushman	40-41
132	E-Z-GO	34
156	E.P.Aeration	51
166	Excel Bridge Mfg.	52
113	Formost Construction Co.	15
111	Golf Course Consultants	14
161	Golf West	52
101	Grace-Sierra	2
142	Great Greens (Floyd McKay)	54
119	Guettler & Sons	20
170	Hood Management	53
123	Huber Ranch Sod Nursery	22
122	ISK Biotech	22
141	ISK Biotech	49
102	Jacklin Seed Co.	3
164	Jesco Products (Pinhigh)	52
104	John Deere	6-7
175	JPF Distributors	53
125	Kalo	21
105	Kubota	8
152	Lab Systems/Software	51
140	Lofts, Inc.	48
174	MacCurrach Golf Construction	53
178	Markers, Inc.	53
162	Master of the Links	52
160	Milona Turf Products	52
151	Mitsubishi	39
163	Neptune Research	52
117	O.M. Scott	18-19
131	O.M. Scott	32
155	Page Com	51
121	Par Aide	20
112	Parkway Research	14
139	Pennington Enterprises	47
124	Perfection Sprinkler	22
114	Precision Laboratories	15
179	Precision Tool Prod. Co.	53
177	Precision Tool Prod. Co.	53
165	Reed-Joseph International	52
106	Regal Chemical	8
138	Rhone-Poulenc	46
109	Rhone-Poulenc	12
136	Roots, Inc.	43
154	Safety Specialty Decals	51
150	Seacoast Labs *	9
172	SGD Inc.	53
120	Southern Corp. Promo.	20
145	Standard Golf	56
157	Syntennico	51
144	Tee-2-Green	55
127	Toro Comm'l. Prod. Div.	26-27
129	Turf Diagnostics & Design	28
168	Turf Feeding Systems	52
115	TurfSeed	16
158	Unit Structures	51
116	Valent USA	17
143	Watersaver Co.	54
176	Western Wood Structures	53
167	Yard Edge	52

* Appears in regional editions.